

Friday Report - overview and contents

The pages in The Friday Report are about adult offenders in Georgia's prisons and jails. They contain statistical snapshots and trends in the populations and movements of offenders in the state prison system, on probation, on parole, and in local jails. Information comes from databases of the Georgia Department of Corrections (GDC) and the Board of Pardons and Paroles, and from data provided by local jailers. Information is summarized into tables in the GDC/Parole Data Warehouse, and is extracted into these pages each Friday. Pages are organized according to the table that supplied the data.

The Monthly Research Table , named "MO_RESRCH" or simply "MO", contains data about state prisoners, grouped into statistically interesting categories. The table contains one record per month, from January 2000 to the present. Despite its being "monthly", it is updated weekly, because some data trickles in for several weeks before it becomes stable history.	
Page	Content
MO-01	Clemencies and maxouts. Monthly graph from 2000 to present shows the monthly departures from prison via actions by the Georgia Parole Board (clemencies), and via service of 100% of the court ordered sentence (maxouts)
MO-02	48 months of releases. Table shows counts and percentages of releases via clemencies and maxouts, with and without probation to follow, for each of the past 48 months.
MO-03	Methamphetamine. Monthly graph from 2000 to present shows admissions, departures, population, and percent of population of inmates with a current offense of methamphetamine possession, sale, manufacturing, or trafficking, and the changing racial composition of the methamphetamine population
MO-04	Non-violent first incarcerants. Monthly graph from 2000 to present shows admissions, departures, population, and percent of population of inmates without violent or sex crimes, who are serving their first Georgia felony incarceration.
MO-05	Seven Deadly Sins. Monthly graph from 2000 to present shows admissions, departures, population, and percent of population of inmates convicted of kidnapping, armed robbery, rape, aggravated sodomy, aggravated sexual battery, and aggravated child molestation, for whom especially severe penalties are prescribed.
MO-06	48 months of inmate subpopulations. Table shows number and percentage of white and non-white inmates with methamphetamine offenses, and non-violent first incarcerants, and inmates convicted of the Seven Deadly Sins.
MO-07	Inmate age overview. Line graph shows the average age of the inmate population, by month from 2000 to the present. Pie chart shows the number of currently active inmates in their teens, twenties, thirties, forties, fifties, and age sixty+.
MO-08	Counts by age group. Graphs show the count, by month from 2000 to the present, of inmates in their teens, twenties, thirties, forties, fifties, and age sixty+.
MO-09	Percentages by age group. Graphs show the percentages, by month from 2000 to the present, of inmates in their teens, twenties, thirties, forties, fifties, and age sixty+.
MO-10	48 months of inmate ages. Table shows average age of the standing population, and counts and percentages of teens, twenties, thirties, forties, fifties, and sixty+, for each of the past 48 months.

Friday Report - overview and contents (continued)

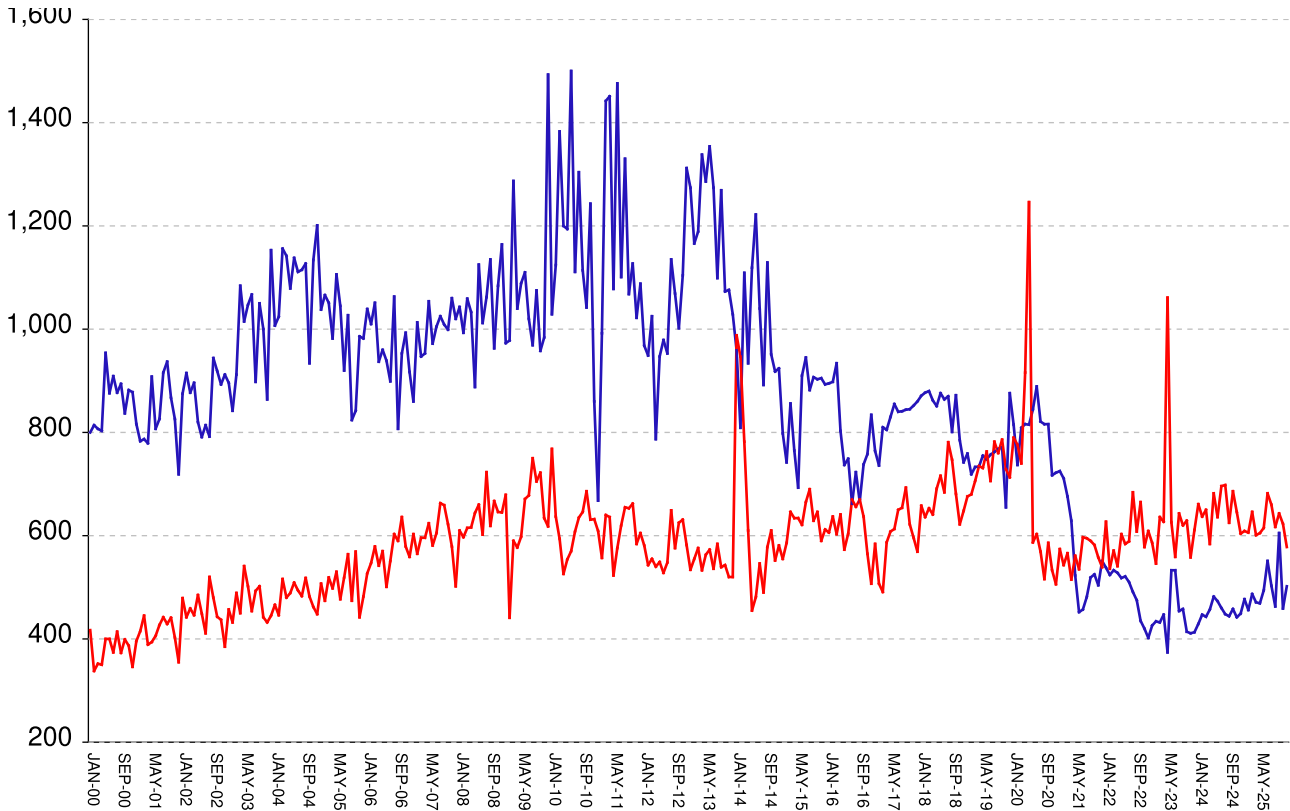
The MSR Table is based on the Management Summary Report (MSR), a snapshot report posted each week in GDC's Scribe database. MSR_RESRCH gathers that data into weekly trends, with one record for each Friday since March 20th, 2009

Page	Content
MSR-01	All housed offenders. Weekly graph from March 20, 2009 to present, showing counts of inmates in state prisons, transitional centers, county prisons, private prisons, inmate boot camps, parole revocation centers, probation Residential Substance Abuse Treatment (RSAT), probation boot camps, probation detention centers, plus the inmate jail backlog and probationers in jail waiting for state facilities.
MSR-02	Probationers in jail. Weekly graph from March 20, 2009 to present, showing counts of probationers in local jails awaiting placement in probation detention centers, probation RSAT centers, and probation boot camps.
MSR-03	State inmates in jail. Weekly graph from March 20, 2009 to present, showing counts of state inmates in local jails awaiting placement in state prison facilities – including those who have not yet been assigned to a diagnostic center, those whose transportation has been delayed for some reason, and those who are ready to be picked up.
MSR-04	Female state inmates in jail. Weekly graph from March 20, 2009 to present, showing counts of female state inmates awaiting placement in a state prison for females.
MSR-05	52-week table: housed offenders. Data for each of the past 52 weeks, showing total prison inmates, parolees in revocation centers, probationers in RSAT/boot camp/detention centers, inmate jail backlog, probationers in jail waiting for facilities, with subtotals.
MSR-06	52-week table: state prisoners. Data for each of the past 52 weeks, showing inmates in state prisons, transition centers, county prisons, pre-release centers, private prisons, and inmate boot camps, with subtotals.
MSR-07	52-week table: waiting in jail. Data for each of the past 52 weeks, showing probationers waiting for detention centers, RSAT, and boot camp; and state prisoners not yet assigned to diagnostic centers, in admission process, with delayed transport, and ready for pickup, with subtotals.

Releases by clemency and maxout, Jan-2000 to Dec-2025

There are two main ways of being released from a Georgia prison -- by actions of the Board of Pardons and Paroles ("Clemencies") and by service of 100% of the court-ordered sentences ("Maxouts").

"Clemency" includes paroles, reprieves, commutations, and transfer to other confinement prior to expiration of sentence. "Other Releases" includes deaths, and sentences modified or overturned by the courts. Clemencies and maxouts may or may not be followed by periods of probation.



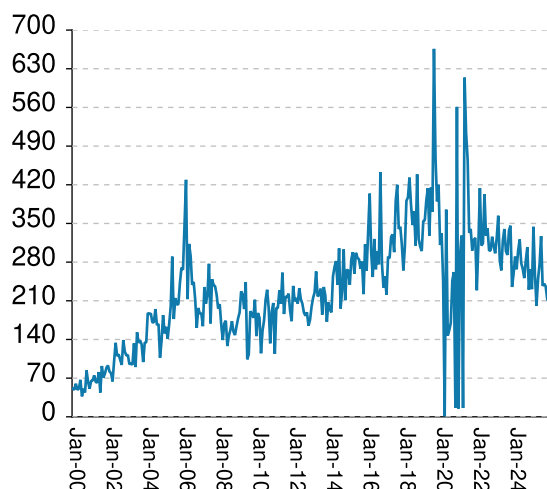
A. Clemency with probation to follow	RISES BY	37	from	405	to	442
B. Clemency only	RISES BY	6	from	54	to	60
C. Maxout with probation to follow	falls by	61	from	581	to	520
D. Maxout only (unsupervised)	RISES BY	16	from	42	to	58
E. Other releases	RISES BY	6	from	22	to	28
F. Total releases (A+B+C+D+E)	RISES BY	4	from	1104	to	1108
G. Total clemencies (A+B) (top line)	RISES BY	43	from	459	to	502
H. Total maxouts (C+D) (bottom line)	falls by	45	from	623	to	578
I. % of releases by clemency (G/F)	RISES BY	3.73%	from	41.58%	to	45.31%
J. % of releases by maxout (H/F)	falls by	4.26%	from	56.43%	to	52.17%
K. Supervised releases (A+B+C)	falls by	18	from	1040	to	1022
L. % unsupervised releases (D/F)	RISES BY	1.43%	from	3.8%	to	5.23%
M. % supervised releases (K/F)	falls by	1.96%	from	94.2%	to	92.24%

Monthly releases from prison by type of release, for the past 48 months										
	A	B	C	D	E	F	G	H	I	J
Month	Clemency + Prob	Clemency Only	Maxout + Prob	Maxout Only	Other rels	Total Releases (A+B+C+D+E)	Total Clemency (A+B)	Total Maxout (C+D)	Percent Clemency (G/F)	Percent Maxout (H/F)
Jan-22	458	80	550	77	26	1191	538	627	45.17%	52.64%
Feb-22	444	80	466	70	24	1084	524	536	48.34%	49.45%
Mar-22	460	73	515	56	16	1120	533	571	47.59%	50.98%
Apr-22	455	73	469	72	16	1085	528	541	48.66%	49.86%
May-22	439	79	539	64	26	1147	518	603	45.16%	52.57%
Jun-22	456	65	528	56	21	1126	521	584	46.27%	51.87%
Jul-22	439	71	530	59	14	1113	510	589	45.82%	52.92%
Aug-22	424	67	619	65	21	1196	491	684	41.05%	57.19%
Sep-22	398	77	549	59	18	1101	475	608	43.14%	55.22%
Oct-22	373	62	603	62	23	1123	435	665	38.74%	59.22%
Nov-22	366	54	523	55	19	1017	420	578	41.30%	56.83%
Dec-22	342	60	550	59	28	1039	402	609	38.69%	58.61%
Jan-23	375	51	527	59	23	1035	426	586	41.16%	56.62%
Feb-23	387	47	493	53	17	997	434	546	43.53%	54.76%
Mar-23	377	55	573	63	24	1092	432	636	39.56%	58.24%
Apr-23	390	57	574	53	26	1100	447	627	40.64%	57.00%
May-23	326	48	930	131	20	1455	374	1061	25.70%	72.92%
Jun-23	461	72	567	59	19	1178	533	626	45.25%	53.14%
Jul-23	459	74	510	49	25	1117	533	559	47.72%	50.04%
Aug-23	401	53	589	54	22	1119	454	643	40.57%	57.46%
Sep-23	402	56	577	43	10	1088	458	620	42.10%	56.99%
Oct-23	362	52	578	51	31	1074	414	629	38.55%	58.57%
Nov-23	354	57	491	67	19	988	411	558	41.60%	56.48%
Dec-23	366	47	554	57	21	1045	413	611	39.52%	58.47%
Jan-24	367	62	599	62	32	1122	429	661	38.24%	58.91%
Feb-24	396	51	578	59	24	1108	447	637	40.34%	57.49%
Mar-24	380	63	586	64	20	1113	443	650	39.80%	58.40%
Apr-24	411	46	532	52	33	1074	457	584	42.55%	54.38%
May-24	426	56	609	73	26	1190	482	682	40.50%	57.31%
Jun-24	411	62	577	59	23	1132	473	636	41.78%	56.18%
Jul-24	398	62	630	66	38	1194	460	696	38.53%	58.29%
Aug-24	381	67	639	59	19	1165	448	698	38.45%	59.91%
Sep-24	379	65	561	64	34	1103	444	625	40.25%	56.66%
Oct-24	401	57	632	54	28	1172	458	686	39.08%	58.53%
Nov-24	387	55	592	54	23	1111	442	646	39.78%	58.15%
Dec-24	392	57	556	48	33	1086	449	604	41.34%	55.62%
Jan-25	419	58	561	48	30	1116	477	609	42.74%	54.57%
Feb-25	398	58	547	59	17	1079	456	606	42.26%	56.16%
Mar-25	431	56	595	51	23	1156	487	646	42.13%	55.88%
Apr-25	408	63	554	47	18	1090	471	601	43.21%	55.14%
May-25	425	44	551	54	26	1100	469	605	42.64%	55.00%
Jun-25	434	60	578	37	36	1145	494	615	43.14%	53.71%
Jul-25	492	59	619	63	33	1266	551	682	43.52%	53.87%
Aug-25	430	73	602	58	16	1179	503	660	42.66%	55.98%
Sep-25	406	57	573	44	26	1106	463	617	41.86%	55.79%
Oct-25	519	86	589	54	26	1274	605	643	47.49%	50.47%
Nov-25	405	54	581	42	22	1104	459	623	41.58%	56.43%
Dec-25	442	60	520	58	28	1108	502	578	45.31%	52.17%

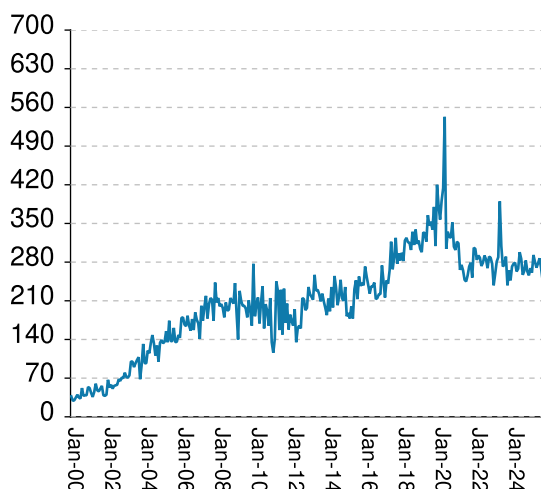
Inmates with meth crimes, by month, Jan-2000 to Dec-2025

Methamphetamine is one of the most addictive drugs ever known. At first it induces intense euphoria, but with continued use causes severe depression and physical deterioration, including the dental catastrophe known as "meth mouth". Georgia's meth epidemic began in the early 2000s and has seen continued growth over the last 2 decades, with continued expansion beyond the originally predominate use by northern county white males.

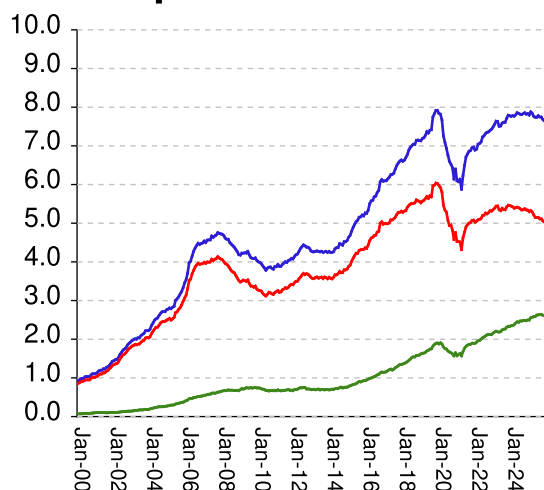
Admissions



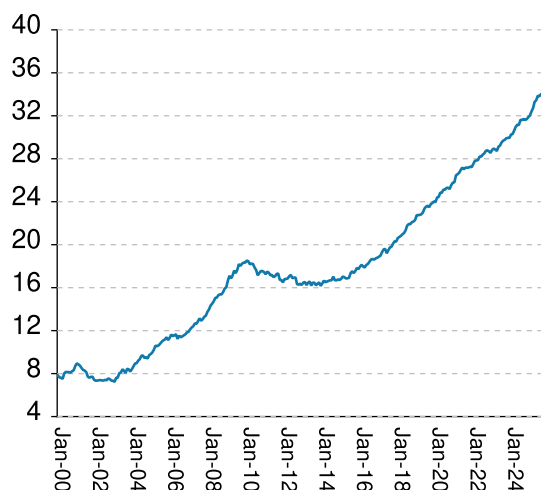
Releases



Population x1000



Percent Non-White

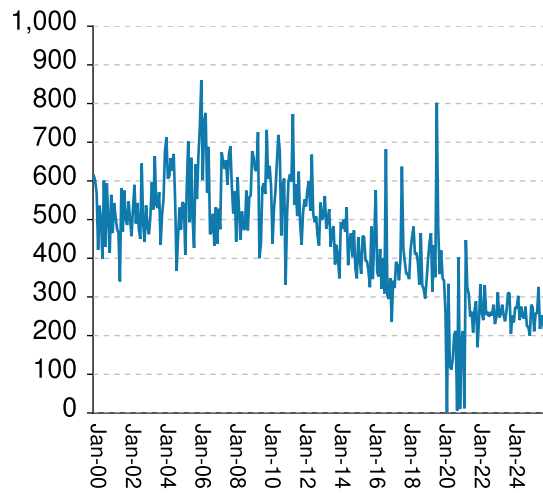


Methamphetamine admissions	falls by	5	from	213	to	208
Methamphetamine releases	falls by	15	from	248	to	233
Methamphetamine population	falls by	25	from	7649	to	7624
Meth white population	falls by	33	from	5032	to	4999
Meth non-white population	RISES BY	6	from	2620	to	2626
Percent meth inmates who are non-white	RISES BY	.19%	from	34.25%	to	34.44%

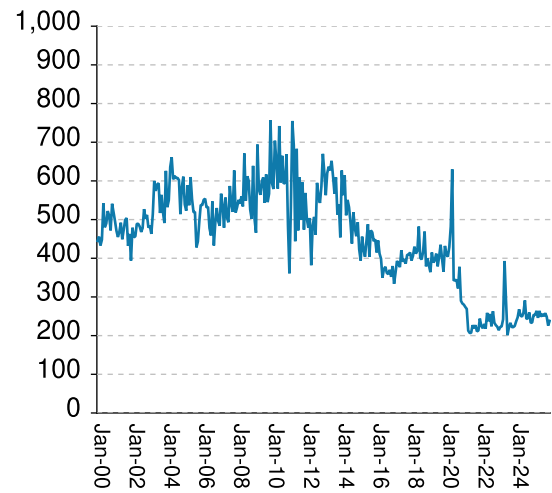
Non-violent first-incarcerants, by month, Jan-2000 to Dec-2025

Historically, about one in six Georgia prison inmates has been a first-time incarcerant with a non-violent crime. In 2012 Georgia passed HB1176, which aimed to curb the growth of prison population by steering the least dangerous, least hardened offenders away from prison through pre-trial intervention, diversion, drug courts and treatment programs, and raising the dollar thresholds that define property felonies. The expectation is that over time, these measures will reduce the percentage of first-time non-violent incarcerants in prison.

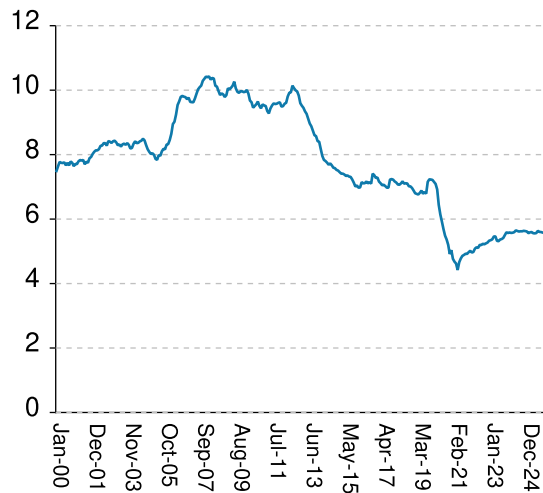
Admissions



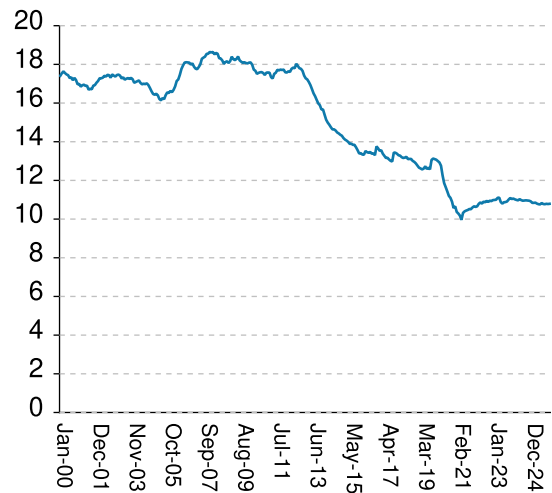
Releases



Population x1000



% Total Population

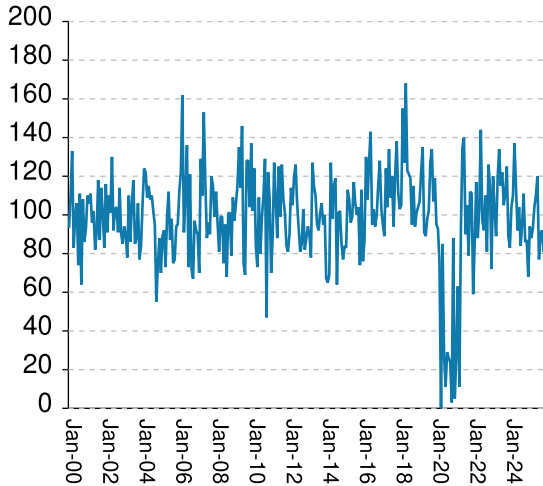


Non-viol/1st-Incar admissions	RISES BY	32	from	213	to	245
Non-viol/1st-Incar releases	RISES BY	12	from	226	to	238
Non-viol/1st-Incar population	RISES BY	7	from	5569	to	5576
Non-viol/1st-Incar % of total population	RISES BY	.01%	from	10.78%	to	10.79%

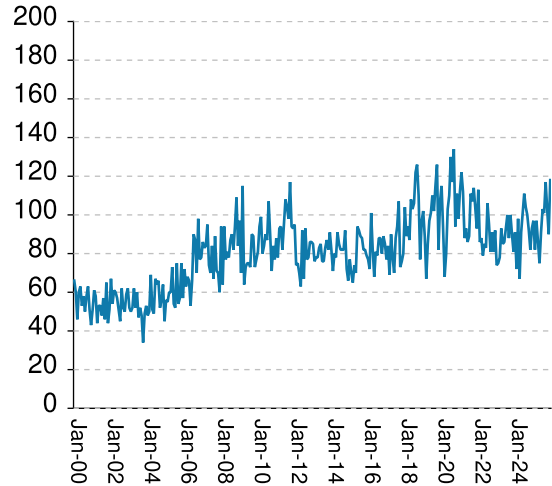
'Seven Deadly Sin', by month, Jan-2000 to Dec-2025

Tough legislation in 1995 imposed mandatory ten-year minimum terms for kidnapping, armed robbery, rape, aggravated sodomy, aggravated sexual battery, and aggravated child molestation, and a minimum of 25 years for murder. A second conviction resulted in life without parole. As predicted, longer prison terms caused population to climb steeply for about a decade. It then began to level off, as releases started catching up with admissions. The 2008 dip in percentage of total population (bottom right) was caused by the surge of methamphetamine convictions (Page MO-03). Note: these graphs include inmates convicted before 1995.

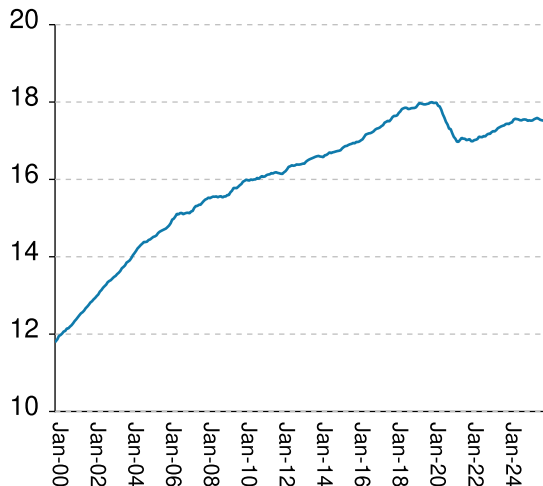
Admissions



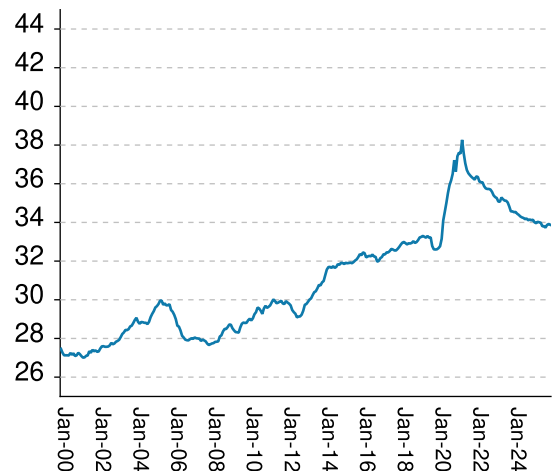
Releases



Population x1000



% Total Population



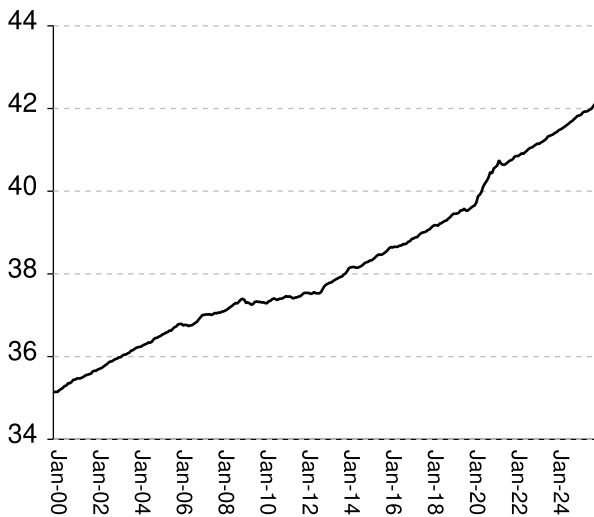
"Seven Deadly Sin" admissions	RISES BY	20	from	81	to	101
"Seven Deadly Sin" releases	RISES BY	28	from	90	to	118
"Seven Deadly Sin" population	falls by	17	from	17519	to	17502
"Seven Deadly Sin" % of total population	falls by	.04%	from	33.92%	to	33.88%

Inmate subpopulation counts and percentages, for the past 48 months										
Month	Methamphetamine						1st Incar Non-Violent		Seven Deadly Sins	
	Total Number	Total Percent	White Number	White Percent	Non White Number	Non White Percent	Number	Percent	Number	Percent
Jan-22	6891	14.76%	5030	72.99%	1896	27.51%	4963	10.63%	16988	36.38%
Feb-22	6918	14.80%	5052	73.03%	1923	27.80%	4980	10.66%	16987	36.35%
Mar-22	7040	14.94%	5087	72.26%	1960	27.84%	5083	10.79%	17016	36.11%
Apr-22	7062	14.96%	5100	72.22%	1969	27.88%	5124	10.86%	17025	36.08%
May-22	7103	15.03%	5124	72.14%	2003	28.20%	5105	10.80%	17043	36.07%
Jun-22	7227	15.15%	5198	71.92%	2038	28.20%	5199	10.90%	17104	35.87%
Jul-22	7263	15.19%	5209	71.72%	2061	28.38%	5196	10.87%	17095	35.76%
Aug-22	7319	15.30%	5263	71.91%	2086	28.50%	5233	10.94%	17092	35.73%
Sep-22	7351	15.34%	5244	71.34%	2113	28.74%	5219	10.89%	17121	35.73%
Oct-22	7362	15.36%	5274	71.64%	2119	28.78%	5247	10.95%	17111	35.70%
Nov-22	7400	15.35%	5321	71.91%	2122	28.68%	5272	10.93%	17156	35.58%
Dec-22	7432	15.31%	5316	71.53%	2122	28.55%	5329	10.98%	17179	35.40%
Jan-23	7490	15.40%	5351	71.44%	2159	28.83%	5345	10.99%	17177	35.31%
Feb-23	7555	15.47%	5388	71.32%	2187	28.95%	5371	11.00%	17222	35.26%
Mar-23	7638	15.54%	5440	71.22%	2204	28.86%	5459	11.10%	17246	35.08%
Apr-23	7631	15.52%	5445	71.35%	2192	28.72%	5464	11.11%	17242	35.07%
May-23	7506	15.33%	5351	71.29%	2186	29.12%	5326	10.88%	17276	35.29%
Jun-23	7516	15.27%	5325	70.85%	2197	29.23%	5314	10.80%	17324	35.20%
Jul-23	7584	15.36%	5386	71.02%	2239	29.52%	5365	10.87%	17346	35.13%
Aug-23	7608	15.38%	5355	70.39%	2258	29.68%	5381	10.88%	17368	35.12%
Sep-23	7611	15.34%	5350	70.29%	2265	29.76%	5413	10.91%	17385	35.03%
Oct-23	7710	15.43%	5418	70.27%	2306	29.91%	5501	11.01%	17396	34.82%
Nov-23	7791	15.45%	5462	70.11%	2333	29.94%	5589	11.09%	17431	34.57%
Dec-23	7779	15.42%	5454	70.11%	2329	29.94%	5569	11.04%	17439	34.57%
Jan-24	7765	15.38%	5443	70.10%	2349	30.25%	5584	11.06%	17431	34.53%
Feb-24	7778	15.38%	5424	69.74%	2357	30.30%	5571	11.02%	17463	34.54%
Mar-24	7766	15.31%	5391	69.42%	2378	30.62%	5577	10.99%	17475	34.45%
Apr-24	7804	15.30%	5400	69.20%	2418	30.98%	5595	10.97%	17545	34.39%
May-24	7857	15.34%	5412	68.88%	2448	31.16%	5649	11.03%	17568	34.31%
Jun-24	7837	15.29%	5399	68.89%	2441	31.15%	5630	10.98%	17559	34.26%
Jul-24	7819	15.25%	5373	68.72%	2472	31.62%	5614	10.95%	17552	34.23%
Aug-24	7813	15.23%	5345	68.41%	2470	31.61%	5622	10.96%	17532	34.17%
Sep-24	7832	15.28%	5350	68.31%	2483	31.70%	5621	10.97%	17527	34.20%
Oct-24	7856	15.27%	5373	68.39%	2483	31.61%	5636	10.96%	17546	34.11%
Nov-24	7823	15.22%	5344	68.31%	2479	31.69%	5628	10.95%	17550	34.15%
Dec-24	7834	15.23%	5337	68.13%	2497	31.87%	5616	10.92%	17544	34.11%
Jan-25	7796	15.20%	5299	67.97%	2497	32.03%	5562	10.84%	17515	34.14%
Feb-25	7879	15.29%	5326	67.60%	2553	32.40%	5589	10.84%	17527	34.01%
Mar-25	7842	15.20%	5288	67.43%	2565	32.71%	5598	10.85%	17518	33.96%
Apr-25	7763	15.07%	5213	67.15%	2585	33.30%	5563	10.80%	17525	34.03%
May-25	7742	15.00%	5153	66.56%	2589	33.44%	5557	10.77%	17554	34.01%
Jun-25	7740	14.96%	5147	66.50%	2621	33.86%	5566	10.76%	17573	33.98%
Jul-25	7780	14.95%	5149	66.18%	2631	33.82%	5636	10.83%	17590	33.80%
Aug-25	7748	14.91%	5114	66.00%	2634	34.00%	5603	10.78%	17566	33.81%
Sep-25	7743	14.89%	5112	66.02%	2641	34.11%	5598	10.77%	17539	33.73%
Oct-25	7684	14.85%	5063	65.89%	2621	34.11%	5582	10.79%	17528	33.87%
Nov-25	7649	14.81%	5032	65.79%	2620	34.25%	5569	10.78%	17519	33.92%
Dec-25	7624	14.76%	4999	65.57%	2626	34.44%	5576	10.79%	17502	33.88%

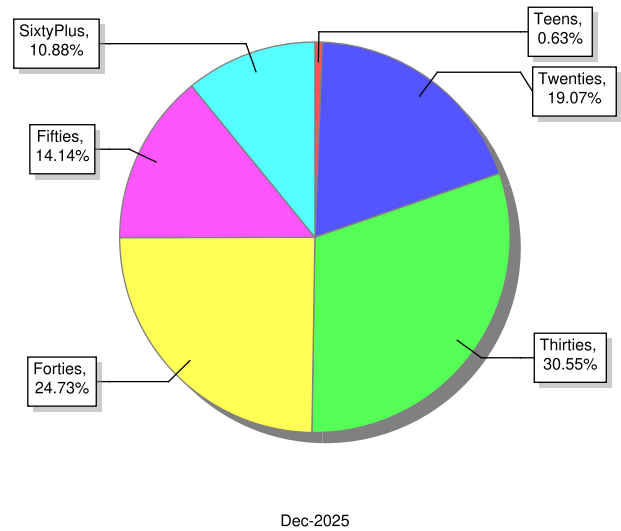
Overview of inmate age statistics, Jan-2000 to Dec-2025

The "aging inmate population" is a concern in correctional systems throughout America, including Georgia. Here, the increase in inmate age is the result of several factors. Teenagers have been steered away from prison by increased usage of probation and other alternatives, at least for their first convictions. And there has been a surge of middle-aged male sex offenders due to the expanding "It's OK to tell" ethos. But most importantly, more severe sentence lengths and release policies have greatly increased the length of time that most offenders -- especially violent ones -- spend in prison, thereby increasing their average age.

Average age since 2000



Current Age

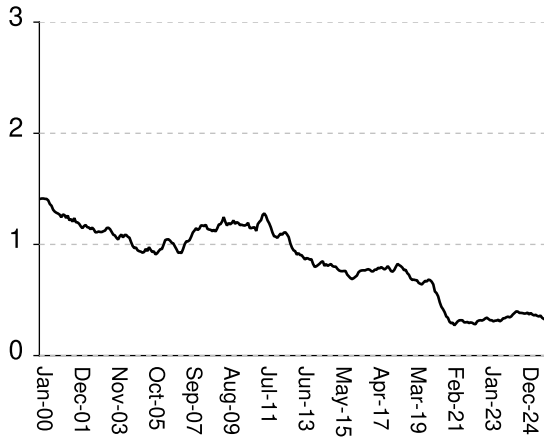


Average age of active inmates	RISES BY	.03	from	42.11	to	42.14
Number in their teens	falls by	7	from	330	to	323
Percentage in their teens	falls by	.01%	from	.64%	to	.63%
Number in their twenties	falls by	39	from	9,890	to	9,851
Percentage in their twenties	falls by	.08%	from	19.15%	to	19.07%
Number in their thirties	falls by	1	from	15,782	to	15,781
Percentage in their thirties	level	at	30.55%
Number in their forties	RISES BY	28	from	12,747	to	12,775
Percentage in their forties	RISES BY	.05%	from	24.68%	to	24.73%
Number in their fifties	falls by	17	from	7,322	to	7,305
Percentage in their fifties	falls by	.03%	from	14.17%	to	14.14%
Number age sixty and up	RISES BY	25	from	5,597	to	5,622
Percentage age sixty and up	RISES BY	.04%	from	10.84%	to	10.88%

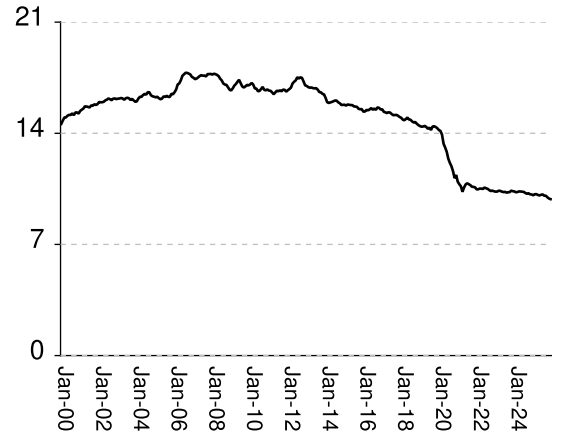
Monthly counts of inmates by age group, Jan-2000 to Dec-2025

Y-axis of Twenties/Thirties/Forties/Fifties runs from 0 to 21,000. Y-axis of Teens/Sixty+ runs from 0 to 3,000.

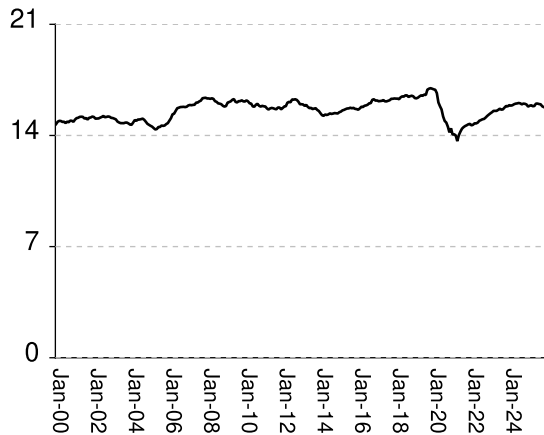
Teens x 1000



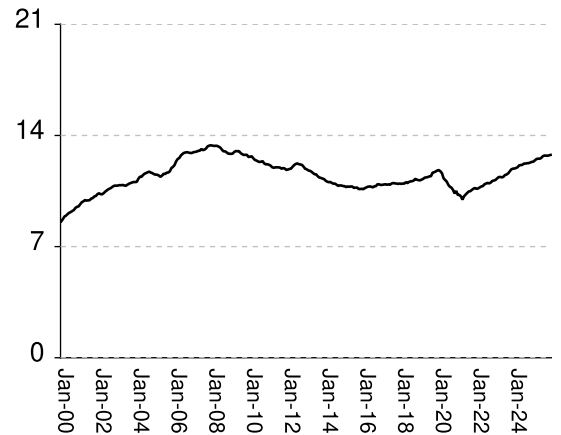
Twenties x 1000



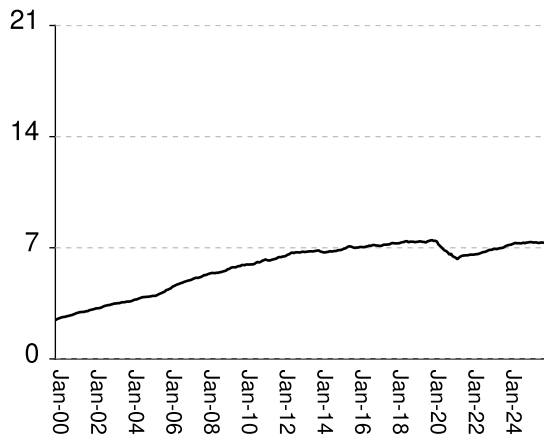
Thirties x 1000



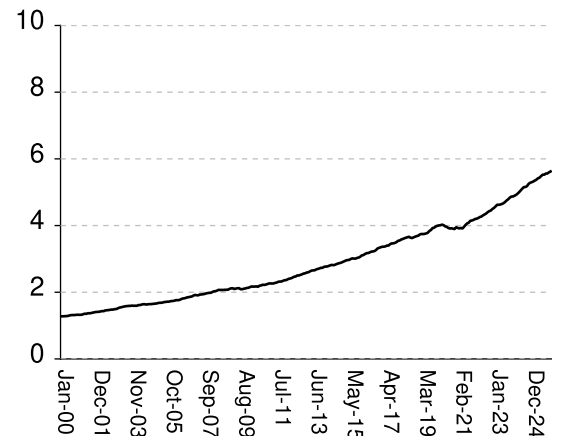
Forties x 1000



Fifties x 1000



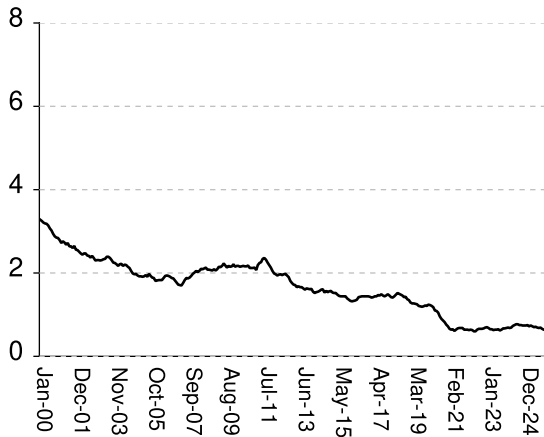
Sixty & Up x 1000



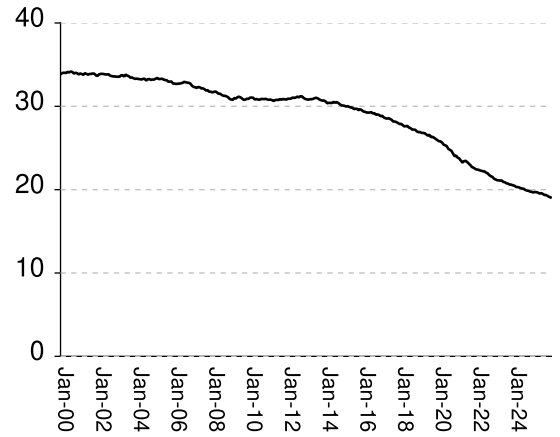
Monthly percentages of inmates by age group, Jan-2000 to Dec-2025

Y-axis of Twenties/Thirties/Forties/Fifties runs from 0% to 40%. Y-axis of Teens/Sixty+ runs from 0% to 8%

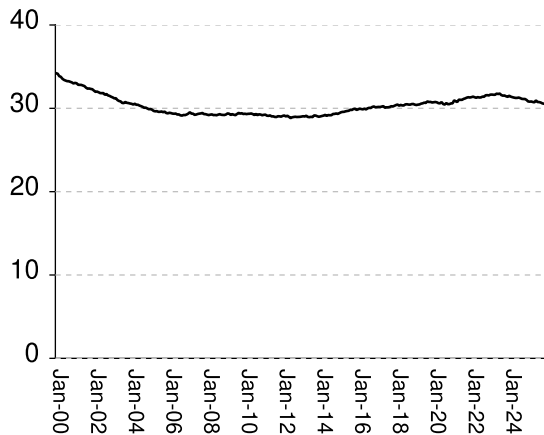
Teens (%)



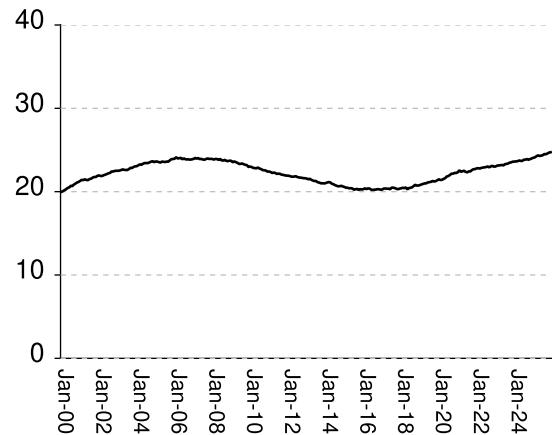
Twenties (%)



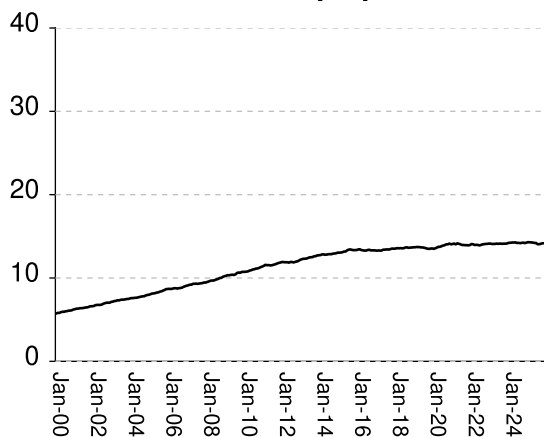
Thirties (%)



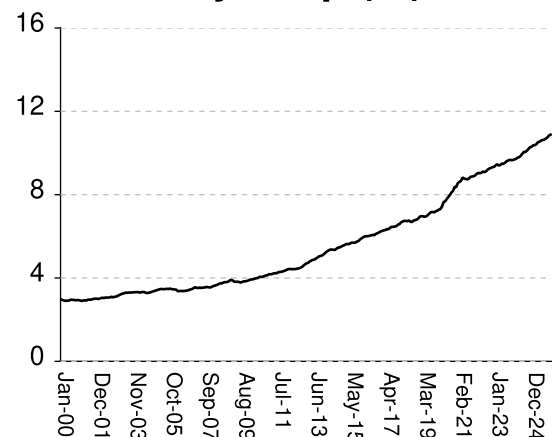
Forties (%)



Fifties (%)



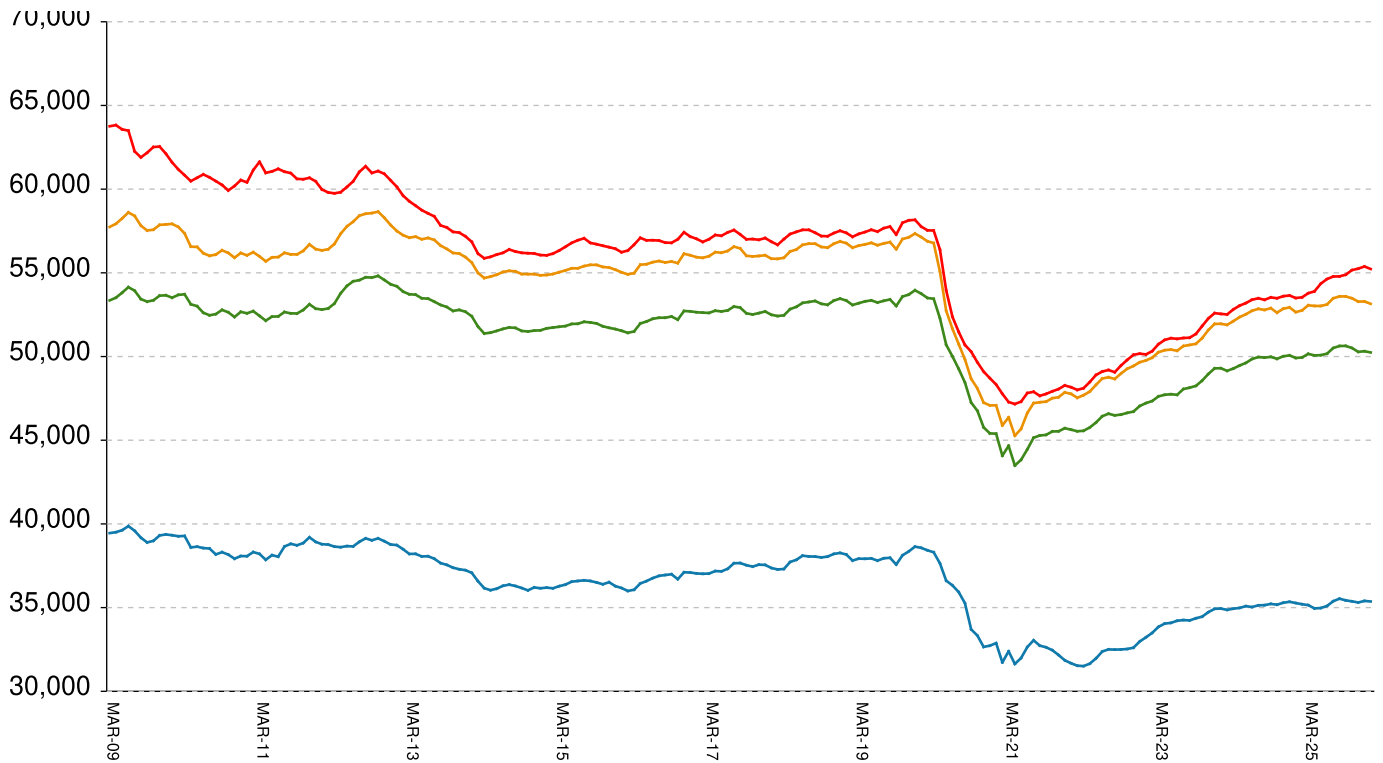
Sixty & Up (%)



Inmate counts & percentages by age, for past 48 months													
Month	Avg Age	Teens		Twenties		Thirties		Forties		Fifties		Sixty & Up	
		Num-ber	Per-cent	Num-ber	Per-cent	Num-ber	Per-cent	Num-ber	Per-cent	Num-ber	Per-cent	Num-ber	Per-cent
Jan-22	40.84	293	0.63%	10470	22.42%	14638	31.34%	10641	22.79%	6569	14.07%	4205	9.00%
Feb-22	40.85	298	0.64%	10471	22.40%	14674	31.40%	10666	22.82%	6566	14.05%	4225	9.04%
Mar-22	40.85	295	0.63%	10518	22.32%	14765	31.33%	10729	22.77%	6576	13.96%	4254	9.03%
Apr-22	40.88	285	0.60%	10511	22.27%	14758	31.27%	10785	22.85%	6599	13.98%	4269	9.05%
May-22	40.92	282	0.60%	10495	22.21%	14809	31.34%	10818	22.89%	6601	13.97%	4304	9.11%
Jun-22	40.9	307	0.64%	10581	22.19%	14925	31.30%	10928	22.92%	6632	13.91%	4331	9.08%
Jul-22	40.95	315	0.66%	10536	22.04%	14968	31.31%	10970	22.95%	6674	13.96%	4359	9.12%
Aug-22	40.98	318	0.66%	10504	21.96%	15019	31.40%	11011	23.02%	6710	14.03%	4400	9.20%
Sep-22	41.02	315	0.66%	10422	21.75%	15041	31.39%	10982	22.92%	6738	14.06%	4432	9.25%
Oct-22	41.05	322	0.67%	10364	21.62%	15127	31.56%	11036	23.03%	6753	14.09%	4450	9.28%
Nov-22	41.06	334	0.69%	10387	21.54%	15228	31.58%	11138	23.10%	6800	14.10%	4495	9.32%
Dec-22	41.09	341	0.70%	10348	21.32%	15311	31.55%	11160	23.00%	6852	14.12%	4528	9.33%
Jan-23	41.12	329	0.68%	10325	21.23%	15391	31.64%	11199	23.02%	6871	14.13%	4571	9.40%
Feb-23	41.15	318	0.65%	10327	21.14%	15459	31.65%	11291	23.12%	6875	14.08%	4622	9.46%
Mar-23	41.14	318	0.65%	10380	21.11%	15547	31.63%	11379	23.15%	6925	14.09%	4622	9.40%
Apr-23	41.18	308	0.63%	10372	21.10%	15548	31.63%	11387	23.16%	6928	14.09%	4630	9.42%
May-23	41.2	314	0.64%	10327	21.09%	15548	31.76%	11362	23.21%	6919	14.13%	4646	9.49%
Jun-23	41.23	315	0.64%	10300	20.93%	15613	31.72%	11393	23.15%	6938	14.10%	4668	9.48%
Jul-23	41.26	322	0.65%	10309	20.88%	15685	31.77%	11504	23.30%	6978	14.13%	4703	9.53%
Aug-23	41.32	308	0.62%	10265	20.76%	15625	31.59%	11539	23.33%	6979	14.11%	4749	9.60%
Sep-23	41.34	318	0.64%	10281	20.72%	15642	31.52%	11603	23.38%	7004	14.11%	4785	9.64%
Oct-23	41.36	335	0.67%	10293	20.61%	15753	31.54%	11730	23.48%	7054	14.12%	4832	9.67%
Nov-23	41.37	336	0.67%	10387	20.60%	15854	31.45%	11860	23.52%	7120	14.12%	4868	9.66%
Dec-23	41.41	345	0.68%	10352	20.52%	15833	31.38%	11906	23.60%	7151	14.17%	4871	9.66%
Jan-24	41.43	350	0.69%	10336	20.48%	15908	31.51%	11918	23.61%	7182	14.23%	4892	9.69%
Feb-24	41.47	344	0.68%	10287	20.34%	15879	31.40%	11948	23.63%	7194	14.23%	4917	9.72%
Mar-24	41.49	352	0.69%	10301	20.31%	15901	31.34%	11996	23.65%	7232	14.26%	4954	9.77%
Apr-24	41.51	370	0.73%	10339	20.27%	15961	31.29%	12113	23.74%	7274	14.26%	5000	9.80%
May-24	41.54	383	0.75%	10334	20.18%	16002	31.25%	12135	23.70%	7306	14.27%	5051	9.86%
Jun-24	41.57	397	0.77%	10320	20.13%	16017	31.25%	12144	23.69%	7281	14.20%	5106	9.96%
Jul-24	41.6	396	0.77%	10307	20.10%	16044	31.29%	12223	23.83%	7293	14.22%	5153	10.05%
Aug-24	41.64	384	0.75%	10238	19.96%	16024	31.23%	12228	23.84%	7275	14.18%	5157	10.05%
Sep-24	41.67	384	0.75%	10192	19.89%	15958	31.14%	12251	23.91%	7286	14.22%	5180	10.11%
Oct-24	41.7	382	0.74%	10222	19.87%	16006	31.12%	12257	23.83%	7323	14.24%	5247	10.20%
Nov-24	41.74	378	0.74%	10156	19.76%	15993	31.12%	12289	23.91%	7290	14.19%	5283	10.28%
Dec-24	41.78	379	0.74%	10147	19.73%	15951	31.01%	12333	23.98%	7327	14.25%	5300	10.30%
Jan-25	41.82	386	0.75%	10093	19.67%	15818	30.83%	12347	24.07%	7337	14.30%	5320	10.37%
Feb-25	41.83	370	0.72%	10164	19.72%	15872	30.80%	12427	24.11%	7358	14.28%	5350	10.38%
Mar-25	41.85	383	0.74%	10165	19.70%	15901	30.82%	12512	24.25%	7360	14.27%	5376	10.42%
Apr-25	41.9	369	0.72%	10114	19.64%	15842	30.76%	12538	24.35%	7338	14.25%	5417	10.52%
May-25	41.93	362	0.70%	10086	19.54%	15855	30.72%	12534	24.29%	7332	14.21%	5438	10.54%
Jun-25	41.93	367	0.71%	10125	19.58%	16006	30.95%	12577	24.32%	7343	14.20%	5484	10.60%
Jul-25	41.94	357	0.69%	10149	19.50%	16007	30.76%	12685	24.37%	7317	14.06%	5526	10.62%
Aug-25	41.97	352	0.68%	10066	19.37%	15978	30.75%	12732	24.51%	7300	14.05%	5526	10.64%
Sep-25	41.99	360	0.69%	10068	19.36%	15962	30.70%	12732	24.49%	7332	14.10%	5559	10.69%
Oct-25	42.05	340	0.66%	9968	19.26%	15835	30.60%	12720	24.58%	7328	14.16%	5562	10.75%
Nov-25	42.11	330	0.64%	9890	19.15%	15782	30.55%	12747	24.68%	7322	14.17%	5597	10.84%
Dec-25	42.14	323	0.63%	9851	19.07%	15781	30.55%	12775	24.73%	7305	14.14%	5622	10.88%

All housed offenders under GDC jurisdiction

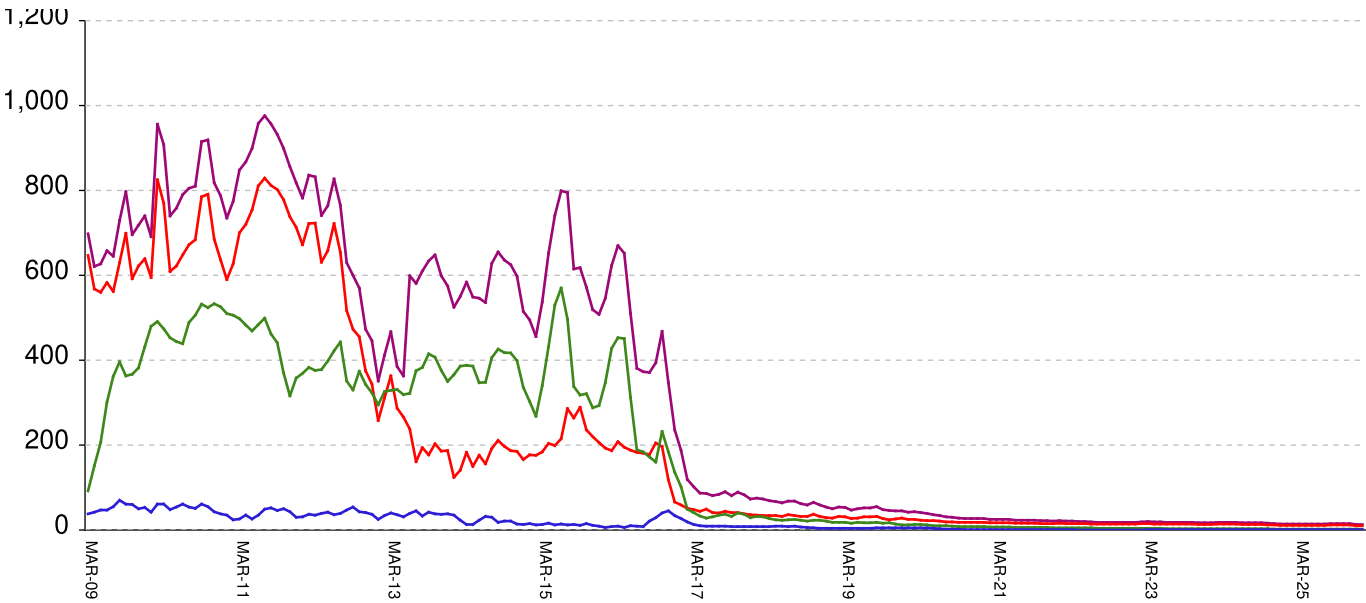
March 20, 2009 through January 09, 2026



All in bed + probs in jail + backlog	falls by	188	from	55,324	to	55,136
Probationers in jail	13	at	13
Inmate jail backlog	falls by	206	from	2,171	to	1,965
All in beds: inmate + Prob + parole	RISES BY	18	from	53,140	to	53,158
Total probationers in beds	RISES BY	6	from	2,902	to	2,908
Probation detention centers	RISES BY	2	from	1,427	to	1,429
Probation boot camps	falls by	...	from		to	
Probation RSAT	RISES BY	4	from	1,475	to	1,479
Parole revocation centers	falls by	...	from		to	
All in inmate beds: state + other	RISES BY	12	from	50,238	to	50,250
Other inmate facilities:	RISES BY	20	from	14,867	to	14,887
Inmate boot camps	1	at	1
Private prisons	RISES BY	9	from	8,065	to	8,074
County prisons	falls by	24	from	4,056	to	4,032
Transitional centers	RISES BY	35	from	2,745	to	2,780
In state prisons only	falls by	8	from	35,371	to	35,363

Probationers in jail awaiting placement in facilities

March 20, 2009 through January 09, 2026



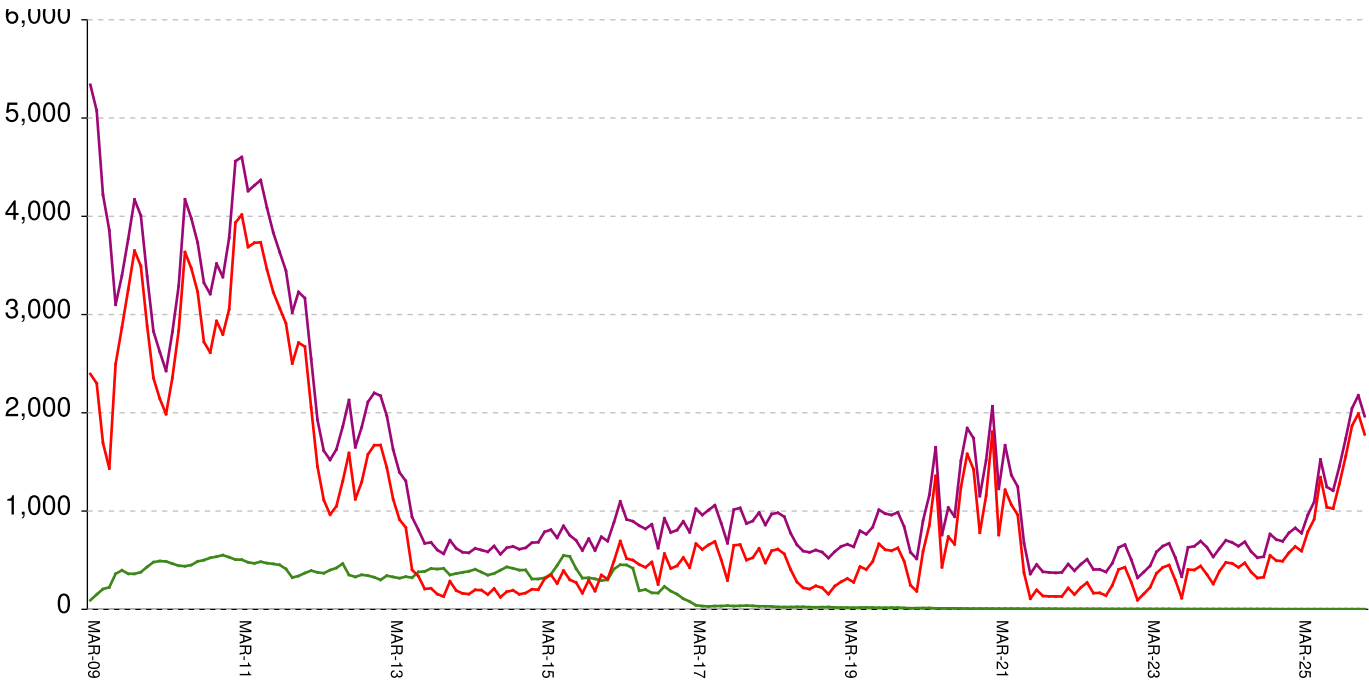
This graph shows, for each Friday since March 20 2009, the number of sentenced felony probationers who were waiting in jail for placement in facilities that GDC operates for housing probationers -- detention centers, probation residential substance abuse treatment (RSAT) centers, and probation boot camps. Counts include both those offenders sentenced directly from court, and those whose street probation was revoked.

Total probationers waiting in jail	level	at	13
...waiting for detention centers	level	at	10
...waiting for probation RSAT	level	at	2
...waiting for probation boot camps	level	at	1

The highest number of probationers waiting in jail was	994	on	05-MAR-10
...highest number waiting for detention centers was	859	on	05-MAR-10
...highest number waiting for probation RSAT was	592	on	10-JUL-15
...highest number waiting for probation boot camps was	70	on	18-SEP-09

State inmates in jail awaiting placement in facilities

March 20, 2009 through January 09, 2026



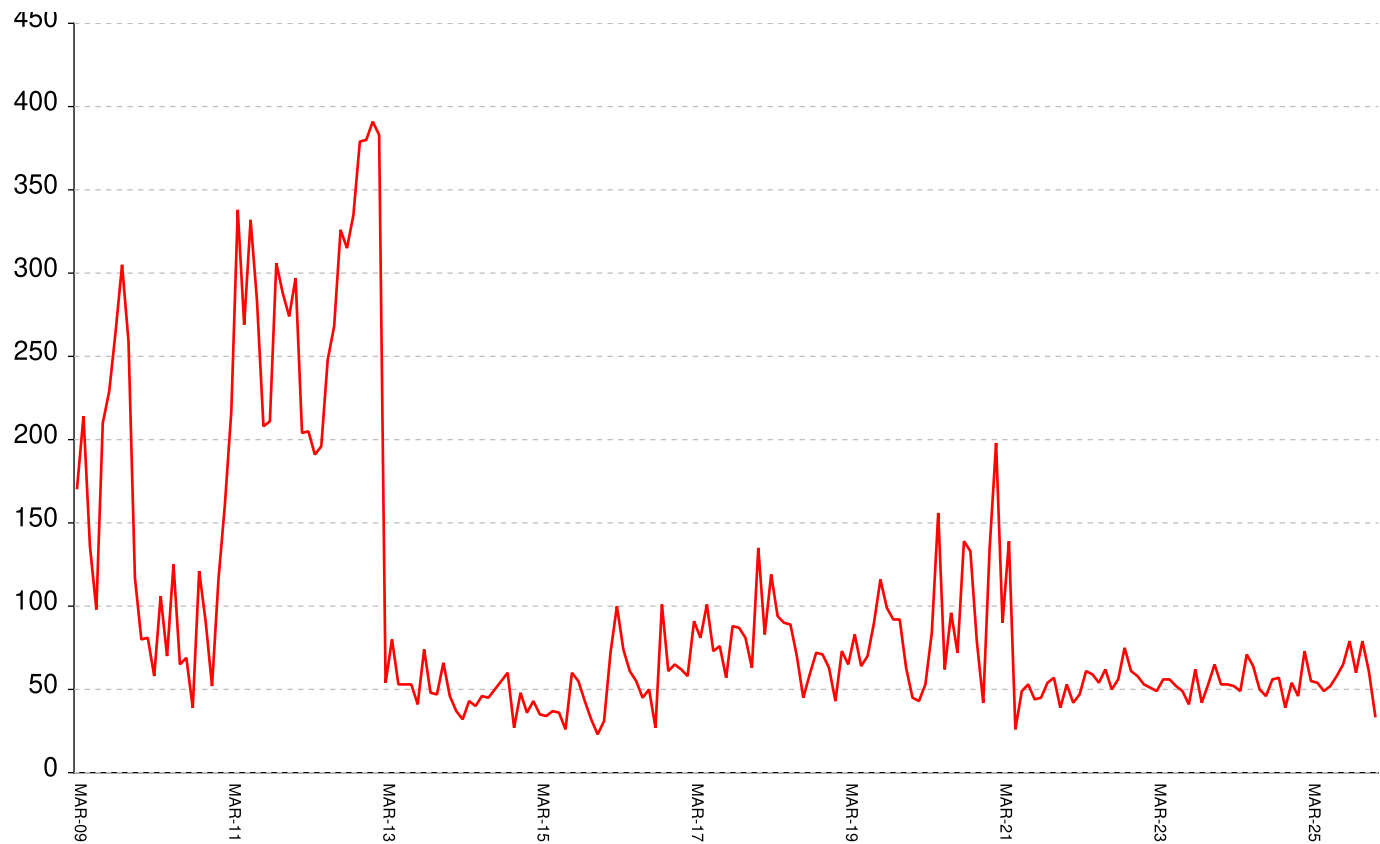
This graph shows, for each Friday since March 2009, the number of prisoners, probationers, and parolees in local jails who have been sentenced or revoked to state prison and whose documents have been received and verified by GDC. Most are almost immediately assigned to a diagnostic center, and are designated as in "admission processing". Of those a few hundred may be in the "transportation delayed" category because there is no room in the assigned diagnostic center, or because the inmate is being held for medical reasons, or for other court proceedings, or other reasons. Those remaining are "ready to be picked up".

Total state inmates waiting in jail	falls by	206	from	2171	to	1965
... not yet assigned to a diagnostic center	falls by	1	from	11	to	10
... total "in admission processing"	falls by	205	from	2160	to	1955
... with "transportation delayed"	RISES BY	3	from	172	to	175
... ready to be picked up	falls by	208	from	1988	to	1780

The highest number of state inmates waiting in jail was	5338	on	27-MAR-09
... highest number not asg to a diagnostic center was	2881	on	12-JUN-09
... highest number in admission processing was	4916	on	25-MAR-11
... highest number with transportation delayed was	645	on	14-JAN-11
... highest number ready to be pickup was	4435	on	25-MAR-11

Female state inmates in jail awaiting pickup

March 20, 2009 through January 09, 2026



This graph shows, for each Friday since March 2009, the number of female state prisoners in local jails who were assigned to diagnostic centers but had not yet been picked up.

Female state inmates in jails waiting picked up falls by 11 from 45 to 34

The highest number of female inmates waiting in jail was 424 on 01-FEB-13

The lowest number of female inmates waiting in jail was 17 on 20-MAR-20

Summary of housed prisoners, parolees, and probationers									
Week Ending	Prison	Parole	Probation			Prison+parole+probation	Jail		Total
	Total inmates	Revocation centers	Prob RSAT	Boot camp	Detention		Inmate backlog	Probationers	Prison+parole+probation+jail
17-Jan-2025	50011		1456		1309	52776	752	14	53542
24-Jan-2025	49767		1407		1212	52386	957	14	53357
31-Jan-2025	49828		1453		1244	52525	862	14	53401
07-Feb-2025	49842		1474		1280	52596	828	14	53438
14-Feb-2025	49917		1494		1305	52716	746	14	53476
21-Feb-2025	49977		1475		1354	52806	778	14	53598
28-Feb-2025	50043		1464		1396	52903	718	14	53635
07-Mar-2025	50081		1449		1390	52920	679	14	53613
14-Mar-2025	50181		1476		1428	53085	664	14	53763
21-Mar-2025	50155		1474		1456	53085	703	14	53802
28-Mar-2025	50212		1477		1471	53160	775	14	53949
04-Apr-2025	50155		1483		1488	53126	772	14	53912
11-Apr-2025	50044		1473		1496	53013	804	14	53831
18-Apr-2025	50040		1449		1489	52978	895	14	53887
25-Apr-2025	50035		1454		1486	52975	962	14	53951
02-May-2025	50070		1461		1501	53032	1094	14	54140
09-May-2025	49969		1446		1504	52919	1192	14	54125
16-May-2025	50043		1435		1473	52951	1355	14	54320
23-May-2025	50107		1428		1501	53036	1453	14	54503
30-May-2025	50224		1437		1509	53170	1477	14	54661
06-Jun-2025	50133		1455		1482	53070	1520	14	54604
13-Jun-2025	50139		1440		1487	53066	1524	14	54604
20-Jun-2025	50045		1425		1525	52995	1543	14	54552
27-Jun-2025	50363		1438		1512	53313	1425	14	54752
04-Jul-2025	50404		1450		1516	53370	1394	14	54778
11-Jul-2025	50529		1433		1531	53493	1191	14	54698
18-Jul-2025	50525		1462		1492	53479	1246	14	54739
25-Jul-2025	50570		1485		1514	53569	1318	14	54901
01-Aug-2025	50604		1492		1499	53595	1266	14	54875
08-Aug-2025	50586		1483		1482	53551	1112	14	54677
15-Aug-2025	50624		1487		1483	53594	1113	14	54721
22-Aug-2025	50654		1478		1463	53595	1204	15	54814
29-Aug-2025	50683		1491		1461	53635	1208	15	54858
05-Sep-2025	50623		1491		1458	53572	1164	15	54751
12-Sep-2025	50671		1504		1474	53649	1168	15	54832
19-Sep-2025	50604		1479		1477	53560	1350	15	54925
26-Sep-2025	50642		1490		1446	53578	1456	15	55049
03-Oct-2025	50592		1496		1426	53514	1545	15	55074
10-Oct-2025	50542		1502		1438	53482	1568	15	55065
17-Oct-2025	50565		1526		1461	53552	1619	15	55186
24-Oct-2025	50468		1540		1470	53478	1738	15	55231
31-Oct-2025	50381		1483		1513	53377	1861	15	55253
07-Nov-2025	50231		1503		1493	53227	1898	15	55140
14-Nov-2025	50276		1516		1485	53277	1907	15	55199
21-Nov-2025	50343		1512		1498	53353	1956	15	55324
28-Nov-2025	50271		1495		1515	53281	2047	15	55343
05-Dec-2025	50325		1472		1501	53298	1989	14	55301
12-Dec-2025	50317		1481		1499	53297	2063	13	55373
19-Dec-2025	50326		1503		1474	53303	2078	13	55394
26-Dec-2025	50291		1493		1474	53258	2177	13	55448
02-Jan-2026	50238		1475		1427	53140	2171	13	55324
09-Jan-2026	50250		1479		1429	53158	1965	13	55136

Offenders housed in facilities for state prisoners

Week ending	In state prisons	In facilities other than state prisons						Total Inmates
		Transition centers	County prisons	Pre-rel centers	Private prisons	Inmate boot camps	Total others	
17-Jan-2025	35313	2677	4467		7553	1	14698	50011
24-Jan-2025	35190	2631	4416		7529	1	14577	49767
31-Jan-2025	35220	2660	4419		7528	1	14608	49828
07-Feb-2025	35212	2646	4438		7545	1	14630	49842
14-Feb-2025	35219	2641	4451		7605	1	14698	49917
21-Feb-2025	35197	2629	4488		7662	1	14780	49977
28-Feb-2025	35183	2622	4500		7737	1	14860	50043
07-Mar-2025	35161	2624	4515		7780	1	14920	50081
14-Mar-2025	35187	2617	4528		7848	1	14994	50181
21-Mar-2025	35144	2608	4487		7915	1	15011	50155
28-Mar-2025	35103	2612	4520		7976	1	15109	50212
04-Apr-2025	35047	2599	4524		7984	1	15108	50155
11-Apr-2025	34951	2596	4501		7995	1	15093	50044
18-Apr-2025	34906	2591	4515		8027	1	15134	50040
25-Apr-2025	34904	2590	4522		8018	1	15131	50035
02-May-2025	34954	2567	4511		8037	1	15116	50070
09-May-2025	34900	2544	4495		8029	1	15069	49969
16-May-2025	34954	2554	4502		8032	1	15089	50043
23-May-2025	35001	2577	4501		8028	0	15106	50107
30-May-2025	35065	2605	4511		8043	0	15159	50224
06-Jun-2025	35068	2587	4440		8038	0	15065	50133
13-Jun-2025	35092	2599	4416		8032	0	15047	50139
20-Jun-2025	35027	2590	4442		7986	0	15018	50045
27-Jun-2025	35203	2645	4483		8032	0	15160	50363
04-Jul-2025	35284	2652	4430		8038	0	15120	50404
11-Jul-2025	35380	2669	4436		8044	0	15149	50529
18-Jul-2025	35399	2690	4400		8036	0	15126	50525
25-Jul-2025	35464	2698	4363		8045	0	15106	50570
01-Aug-2025	35516	2709	4347		8032	0	15088	50604
08-Aug-2025	35507	2698	4347		8034	0	15079	50586
15-Aug-2025	35522	2714	4349		8039	0	15102	50624
22-Aug-2025	35539	2726	4348		8041	0	15115	50654
29-Aug-2025	35576	2714	4352		8041	0	15107	50683
05-Sep-2025	35478	2721	4352		8072	0	15145	50623
12-Sep-2025	35437	2739	4396		8099	0	15234	50671
19-Sep-2025	35399	2749	4378		8078	0	15205	50604
26-Sep-2025	35420	2732	4384		8106	0	15222	50642
03-Oct-2025	35389	2727	4371		8105	0	15203	50592
10-Oct-2025	35390	2705	4350		8097	0	15152	50542
17-Oct-2025	35402	2716	4337		8110	0	15163	50565
24-Oct-2025	35359	2744	4297		8068	0	15109	50468
31-Oct-2025	35328	2751	4237		8065	0	15053	50381
07-Nov-2025	35288	2748	4167		8028	0	14943	50231
14-Nov-2025	35293	2750	4193		8040	0	14983	50276
21-Nov-2025	35342	2756	4211		8034	0	15001	50343
28-Nov-2025	35305	2745	4168		8053	0	14966	50271
05-Dec-2025	35396	2746	4134		8049	0	14929	50325
12-Dec-2025	35370	2759	4130		8058	0	14947	50317
19-Dec-2025	35414	2755	4107		8049	1	14912	50326
26-Dec-2025	35409	2737	4082		8062	1	14882	50291
02-Jan-2026	35371	2745	4056		8065	1	14867	50238
09-Jan-2026	35363	2780	4032		8074	1	14887	50250

Offenders waiting in local jails for state facilities										
	Probationers waiting in jail				Probationers waiting in jail					
Week ending	.. for PDCs	.. for RSAT	.. for boot camps	Total	Total backlog	Not yet assigned	In adm process	Delayed transport	Ready for pickup	Assigned females
17-Jan-2025	11	2	1	14	752	22	730	182	548	53
24-Jan-2025	11	2	1	14	957	20	937	182	755	78
31-Jan-2025	11	2	1	14	862	21	841	184	657	60
07-Feb-2025	11	2	1	14	828	9	819	180	639	73
14-Feb-2025	11	2	1	14	746	8	738	180	558	68
21-Feb-2025	11	2	1	14	778	7	771	181	590	52
28-Feb-2025	11	2	1	14	718	6	712	180	532	58
07-Mar-2025	11	2	1	14	679	6	673	178	495	56
14-Mar-2025	11	2	1	14	664	6	658	175	483	56
21-Mar-2025	11	2	1	14	703	8	695	173	522	38
28-Mar-2025	11	2	1	14	775	9	766	173	593	55
04-Apr-2025	11	2	1	14	772	9	763	171	592	42
11-Apr-2025	11	2	1	14	804	9	795	169	626	63
18-Apr-2025	11	2	1	14	895	10	885	168	717	50
25-Apr-2025	11	2	1	14	962	9	953	162	791	54
02-May-2025	11	2	1	14	1094	9	1085	168	917	49
09-May-2025	11	2	1	14	1192	9	1183	171	1012	58
16-May-2025	11	2	1	14	1355	8	1347	178	1169	62
23-May-2025	11	2	1	14	1453	8	1445	181	1264	69
30-May-2025	11	2	1	14	1477	9	1468	184	1284	58
06-Jun-2025	11	2	1	14	1520	8	1512	176	1336	65
13-Jun-2025	11	2	1	14	1524	8	1516	172	1344	52
20-Jun-2025	11	2	1	14	1543	9	1534	179	1355	46
27-Jun-2025	11	2	1	14	1425	9	1416	179	1237	35
04-Jul-2025	11	2	1	14	1394	9	1385	202	1183	53
11-Jul-2025	11	2	1	14	1191	9	1182	201	981	50
18-Jul-2025	11	2	1	14	1246	9	1237	198	1039	58
25-Jul-2025	11	2	1	14	1318	9	1309	203	1106	70
01-Aug-2025	11	2	1	14	1266	9	1257	192	1065	59
08-Aug-2025	11	2	1	14	1112	11	1101	177	924	40
15-Aug-2025	11	2	1	14	1113	10	1103	174	929	51
22-Aug-2025	12	2	1	15	1204	10	1194	171	1023	60
29-Aug-2025	12	2	1	15	1208	8	1200	175	1025	65
05-Sep-2025	12	2	1	15	1164	8	1156	177	979	63
12-Sep-2025	12	2	1	15	1168	8	1160	178	982	68
19-Sep-2025	12	2	1	15	1350	8	1342	176	1166	61
26-Sep-2025	12	2	1	15	1456	9	1447	169	1278	79
03-Oct-2025	12	2	1	15	1545	8	1537	169	1368	75
10-Oct-2025	12	2	1	15	1568	8	1560	171	1389	66
17-Oct-2025	12	2	1	15	1619	9	1610	171	1439	73
24-Oct-2025	12	2	1	15	1738	8	1730	172	1558	60
31-Oct-2025	12	2	1	15	1861	10	1851	167	1684	53
07-Nov-2025	12	2	1	15	1898	11	1887	168	1719	58
14-Nov-2025	12	2	1	15	1907	12	1895	169	1726	67
21-Nov-2025	12	2	1	15	1956	11	1945	175	1770	86
28-Nov-2025	12	2	1	15	2047	11	2036	168	1868	79
05-Dec-2025	11	2	1	14	1989	10	1979	171	1808	72
12-Dec-2025	10	2	1	13	2063	11	2052	172	1880	79
19-Dec-2025	10	2	1	13	2078	11	2067	172	1895	53
26-Dec-2025	10	2	1	13	2177	11	2166	175	1991	61
02-Jan-2026	10	2	1	13	2171	11	2160	172	1988	45
09-Jan-2026	10	2	1	13	1965	10	1955	175	1780	34