

# Friday Report - overview and contents

The pages in The Friday Report are about adult offenders in Georgia's prisons and jails. They contain statistical snapshots and trends in the populations and movements of offenders in the state prison system, on probation, on parole, and in local jails. Information comes from databases of the Georgia Department of Corrections (GDC) and the Board of Pardons and Paroles, and from data provided by local jailers. Information is summarized into tables in the GDC/Parole Data Warehouse, and is extracted into these pages each Friday. Pages are organized according to the table that supplied the data.

<b>The Monthly Research Table</b> , named "MO_RESRCH" or simply "MO", contains data about state prisoners, grouped into statistically interesting categories. The table contains one record per month, from January 2000 to the present. Despite its being "monthly", it is updated weekly, because some data trickles in for several weeks before it becomes stable history.	
Page	Content
<b>MO-01</b>	Clemencies and maxouts. Monthly graph from 2000 to present shows the monthly departures from prison via actions by the Georgia Parole Board (clemencies), and via service of 100% of the court ordered sentence (maxouts)
<b>MO-02</b>	48 months of releases. Table shows counts and percentages of releases via clemencies and maxouts, with and without probation to follow, for each of the past 48 months.
<b>MO-03</b>	Methamphetamine. Monthly graph from 2000 to present shows admissions, departures, population, and percent of population of inmates with a current offense of methamphetamine possession, sale, manufacturing, or trafficking, and the changing racial composition of the methamphetamine population
<b>MO-04</b>	Non-violent first incarcerants. Monthly graph from 2000 to present shows admissions, departures, population, and percent of population of inmates without violent or sex crimes, who are serving their first Georgia felony incarceration.
<b>MO-05</b>	Seven Deadly Sins. Monthly graph from 2000 to present shows admissions, departures, population, and percent of population of inmates convicted of kidnapping, armed robbery, rape, aggravated sodomy, aggravated sexual battery, and aggravated child molestation, for whom especially severe penalties are prescribed.
<b>MO-06</b>	48 months of inmate subpopulations. Table shows number and percentage of white and non-white inmates with methamphetamine offenses, and non-violent first incarcerants, and inmates convicted of the Seven Deadly Sins.
<b>MO-07</b>	Inmate age overview. Line graph shows the average age of the inmate population, by month from 2000 to the present. Pie chart shows the number of currently active inmates in their teens, twenties, thirties, forties, fifties, and age sixty+.
<b>MO-08</b>	Counts by age group. Graphs show the count, by month from 2000 to the present, of inmates in their teens, twenties, thirties, forties, fifties, and age sixty+.
<b>MO-09</b>	Percentages by age group. Graphs show the percentages, by month from 2000 to the present, of inmates in their teens, twenties, thirties, forties, fifties, and age sixty+.
<b>MO-10</b>	48 months of inmate ages. Table shows average age of the standing population, and counts and percentages of teens, twenties, thirties, forties, fifties, and sixty+, for each of the past 48 months.

# Friday Report - overview and contents (continued)

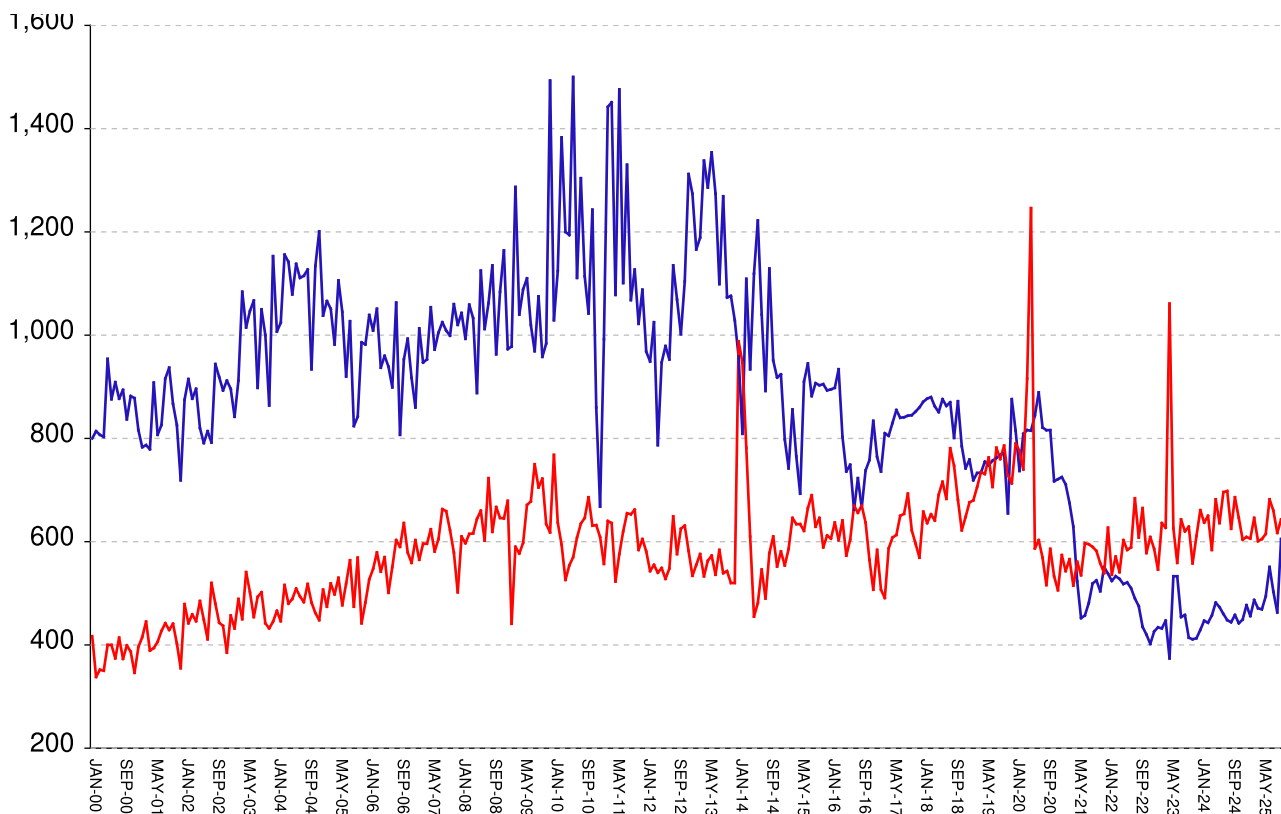
**The MSR Table** is based on the Management Summary Report (MSR), a snapshot report posted each week in GDC's Scribe database. MSR\_RESRCH gathers that data into weekly trends, with one record for each Friday since March 20th, 2009

Page	Content
<b>MSR-01</b>	All housed offenders. Weekly graph from March 20, 2009 to present, showing counts of inmates in state prisons, transitional centers, county prisons, private prisons, inmate boot camps, parole revocation centers, probation Residential Substance Abuse Treatment (RSAT), probation boot camps, probation detention centers, plus the inmate jail backlog and probationers in jail waiting for state facilities.
<b>MSR-02</b>	Probationers in jail. Weekly graph from March 20, 2009 to present, showing counts of probationers in local jails awaiting placement in probation detention centers, probation RSAT centers, and probation boot camps.
<b>MSR-03</b>	State inmates in jail. Weekly graph from March 20, 2009 to present, showing counts of state inmates in local jails awaiting placement in state prison facilities – including those who have not yet been assigned to a diagnostic center, those whose transportation has been delayed for some reason, and those who are ready to be picked up.
<b>MSR-04</b>	Female state inmates in jail. Weekly graph from March 20, 2009 to present, showing counts of female state inmates awaiting placement in a state prison for females.
<b>MSR-05</b>	52-week table: housed offenders. Data for each of the past 52 weeks, showing total prison inmates, parolees in revocation centers, probationers in RSAT/boot camp/detention centers, inmate jail backlog, probationers in jail waiting for facilities, with subtotals.
<b>MSR-06</b>	52-week table: state prisoners. Data for each of the past 52 weeks, showing inmates in state prisons, transition centers, county prisons, pre-release centers, private prisons, and inmate boot camps, with subtotals.
<b>MSR-07</b>	52-week table: waiting in jail. Data for each of the past 52 weeks, showing probationers waiting for detention centers, RSAT, and boot camp; and state prisoners not yet assigned to diagnostic centers, in admission process, with delayed transport, and ready for pickup, with subtotals.

## Releases by clemency and maxout, Jan-2000 to Dec-2025

There are two main ways of being released from a Georgia prison -- by actions of the Board of Pardons and Paroles ("Clemencies") and by service of 100% of the court-ordered sentences ("Maxouts").

"Clemency" includes paroles, reprieves, commutations, and transfer to other confinement prior to expiration of sentence. "Other Releases" includes deaths, and sentences modified or overturned by the courts. Clemencies and maxouts may or may not be followed by periods of probation.



A. Clemency with probation to follow	RISES BY	38	from	405	to	443
B. Clemency only	RISES BY	5	from	54	to	59
C. Maxout with probation to follow	falls by	61	from	581	to	520
D. Maxout only (unsupervised)	RISES BY	16	from	42	to	58
E. Other releases	RISES BY	6	from	22	to	28
F. Total releases (A+B+C+D+E)	RISES BY	4	from	1104	to	1108
<b>G. Total clemencies (A+B) (top line)</b>	<b>RISES BY</b>	<b>43</b>	<b>from</b>	<b>459</b>	<b>to</b>	<b>502</b>
<b>H. Total maxouts (C+D) (bottom line)</b>	<b>falls by</b>	<b>45</b>	<b>from</b>	<b>623</b>	<b>to</b>	<b>578</b>
I. % of releases by clemency (G/F)	RISES BY	3.73%	from	41.58%	to	45.31%
J. % of releases by maxout (H/F)	falls by	4.26%	from	56.43%	to	52.17%
K. Supervised releases (A+B+C)	falls by	18	from	1040	to	1022
L. % unsupervised releases (D/F)	RISES BY	1.43%	from	3.8%	to	5.23%
M. % supervised releases (K/F)	falls by	1.96%	from	94.2%	to	92.24%

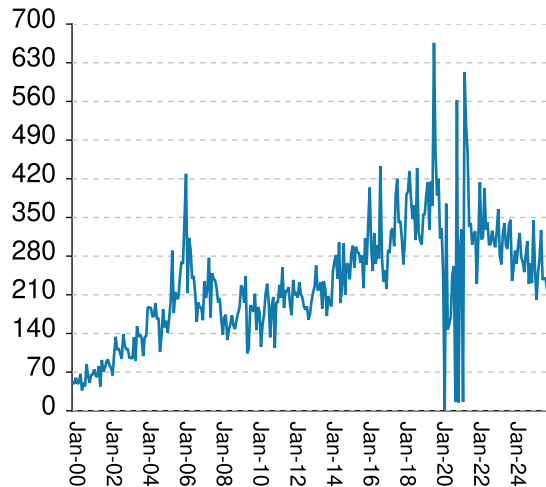
Monthly releases from prison by type of release, for the past 48 months										
	A	B	C	D	E	F	G	H	I	J
Month	Clemency + Prob	Clemency Only	Maxout + Prob	Maxout Only	Other rels	Total Releases (A+B+C+D+E)	Total Clemency (A+B)	Total Maxout (C+D)	Percent Clemency (G/F)	Percent Maxout (H/F)
Jan-22	458	80	550	77	26	1191	538	627	45.17%	52.64%
Feb-22	444	80	466	70	24	1084	524	536	48.34%	49.45%
Mar-22	460	73	515	56	16	1120	533	571	47.59%	50.98%
Apr-22	454	74	469	72	16	1085	528	541	48.66%	49.86%
May-22	439	79	539	64	26	1147	518	603	45.16%	52.57%
Jun-22	456	65	528	56	21	1126	521	584	46.27%	51.87%
Jul-22	439	71	529	60	14	1113	510	589	45.82%	52.92%
Aug-22	423	67	619	65	21	1195	490	684	41.00%	57.24%
Sep-22	398	77	549	59	18	1101	475	608	43.14%	55.22%
Oct-22	373	62	603	62	23	1123	435	665	38.74%	59.22%
Nov-22	367	53	523	55	19	1017	420	578	41.30%	56.83%
Dec-22	342	60	550	59	28	1039	402	609	38.69%	58.61%
Jan-23	375	51	526	60	23	1035	426	586	41.16%	56.62%
Feb-23	387	47	493	53	17	997	434	546	43.53%	54.76%
Mar-23	377	55	573	63	24	1092	432	636	39.56%	58.24%
Apr-23	390	57	574	53	26	1100	447	627	40.64%	57.00%
May-23	326	48	930	131	20	1455	374	1061	25.70%	72.92%
Jun-23	460	73	567	59	19	1178	533	626	45.25%	53.14%
Jul-23	459	74	510	49	25	1117	533	559	47.72%	50.04%
Aug-23	401	53	589	54	22	1119	454	643	40.57%	57.46%
Sep-23	402	56	577	43	10	1088	458	620	42.10%	56.99%
Oct-23	362	52	578	51	31	1074	414	629	38.55%	58.57%
Nov-23	354	57	491	67	19	988	411	558	41.60%	56.48%
Dec-23	367	46	554	57	21	1045	413	611	39.52%	58.47%
Jan-24	367	62	598	63	32	1122	429	661	38.24%	58.91%
Feb-24	396	51	578	59	24	1108	447	637	40.34%	57.49%
Mar-24	380	63	586	64	20	1113	443	650	39.80%	58.40%
Apr-24	411	46	532	52	33	1074	457	584	42.55%	54.38%
May-24	426	56	608	74	26	1190	482	682	40.50%	57.31%
Jun-24	411	62	577	59	23	1132	473	636	41.78%	56.18%
Jul-24	398	62	630	66	38	1194	460	696	38.53%	58.29%
Aug-24	381	67	639	59	19	1165	448	698	38.45%	59.91%
Sep-24	379	65	561	64	34	1103	444	625	40.25%	56.66%
Oct-24	401	57	632	54	28	1172	458	686	39.08%	58.53%
Nov-24	387	55	592	54	23	1111	442	646	39.78%	58.15%
Dec-24	392	57	556	48	33	1086	449	604	41.34%	55.62%
Jan-25	418	59	561	48	30	1116	477	609	42.74%	54.57%
Feb-25	400	56	547	59	17	1079	456	606	42.26%	56.16%
Mar-25	431	56	594	52	23	1156	487	646	42.13%	55.88%
Apr-25	409	62	554	47	18	1090	471	601	43.21%	55.14%
May-25	425	44	551	54	26	1100	469	605	42.64%	55.00%
Jun-25	433	61	579	36	36	1145	494	615	43.14%	53.71%
Jul-25	492	59	619	63	33	1266	551	682	43.52%	53.87%
Aug-25	431	72	602	58	16	1179	503	660	42.66%	55.98%
Sep-25	406	57	573	44	26	1106	463	617	41.86%	55.79%
Oct-25	519	86	589	54	26	1274	605	643	47.49%	50.47%
Nov-25	405	54	581	42	22	1104	459	623	41.58%	56.43%
Dec-25	443	59	520	58	28	1108	502	578	45.31%	52.17%



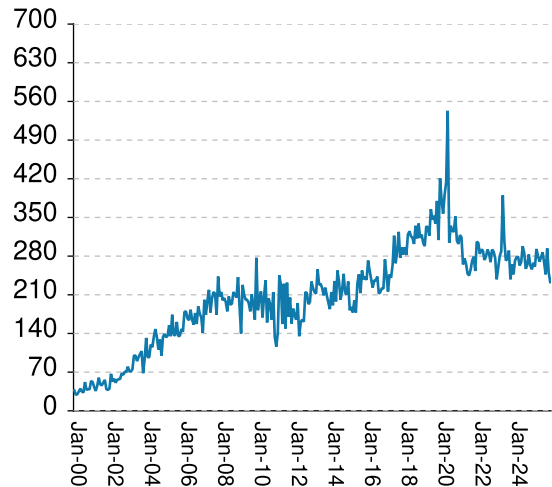
# Inmates with meth crimes, by month, Jan-2000 to Dec-2025

Methamphetamine is one of the most addictive drugs ever known. At first it induces intense euphoria, but with continued use causes severe depression and physical deterioration, including the dental catastrophe known as "meth mouth". Georgia's meth epidemic began in the early 2000s and has seen continued growth over the last 2 decades, with continued expansion beyond the originally predominate use by northern county white males.

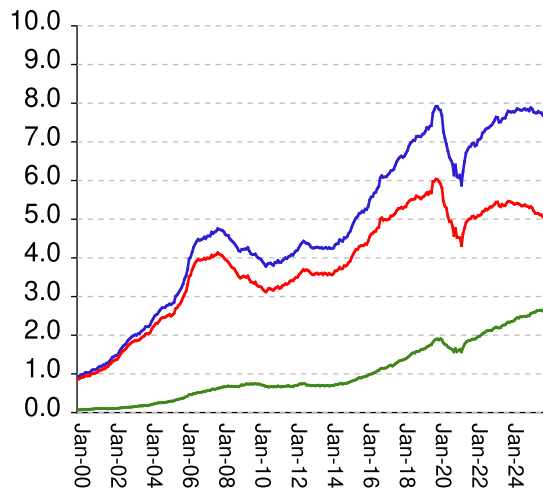
## Admissions



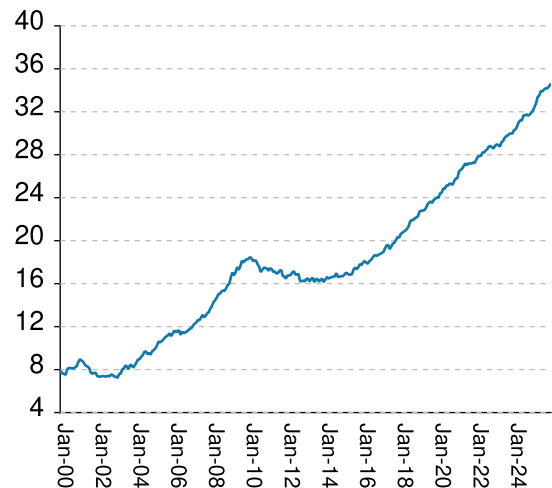
## Releases



## Population x1000



## Percent Non-White

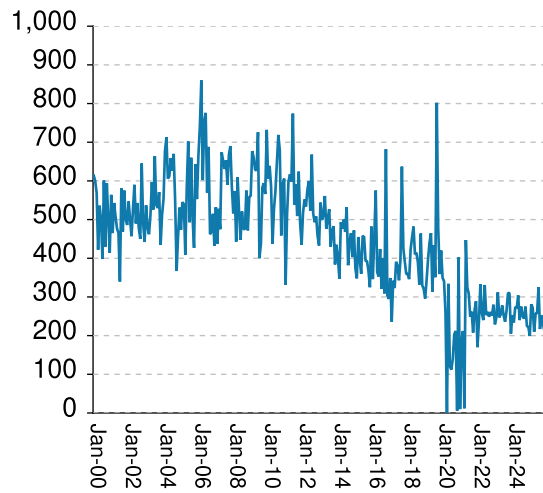


Methamphetamine admissions	falls by	10	from	217	to	207
Methamphetamine releases	falls by	17	from	250	to	233
<b>Methamphetamine population</b>	<b>falls by</b>	<b>26</b>	<b>from</b>	<b>7661</b>	<b>to</b>	<b>7635</b>
<b>Meth white population</b>	<b>falls by</b>	<b>35</b>	<b>from</b>	<b>5035</b>	<b>to</b>	<b>5000</b>
<b>Meth non-white population</b>	<b>RISES BY</b>	<b>7</b>	<b>from</b>	<b>2629</b>	<b>to</b>	<b>2636</b>
Percent meth inmates who are non-white	RISES BY	.21%	from	34.32%	to	34.53%

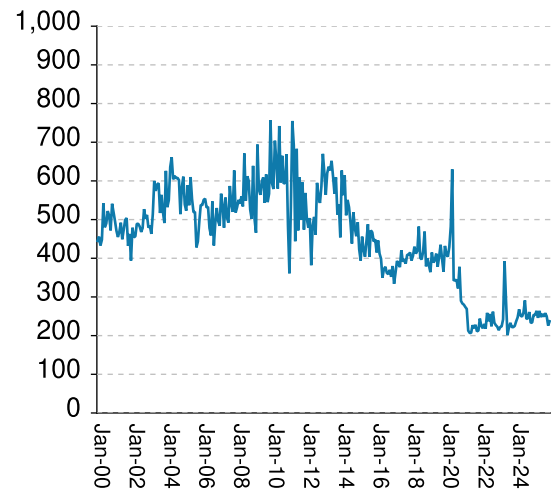
## Non-violent first-incarcerants, by month, Jan-2000 to Dec-2025

Historically, about one in six Georgia prison inmates has been a first-time incarcerant with a non-violent crime. In 2012 Georgia passed HB1176, which aimed to curb the growth of prison population by steering the least dangerous, least hardened offenders away from prison through pre-trial intervention, diversion, drug courts and treatment programs, and raising the dollar thresholds that define property felonies. The expectation is that over time, these measures will reduce the percentage of first-time non-violent incarcerants in prison.

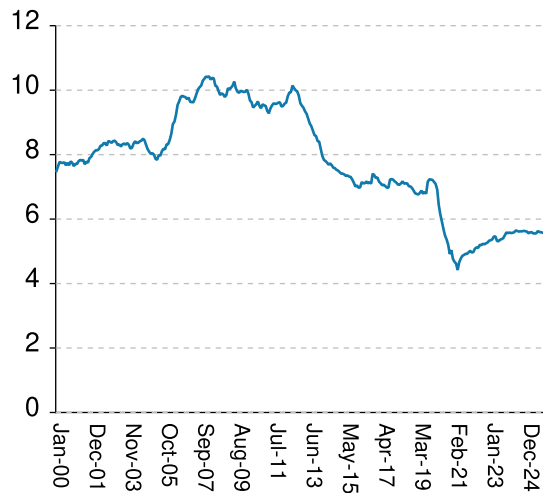
### Admissions



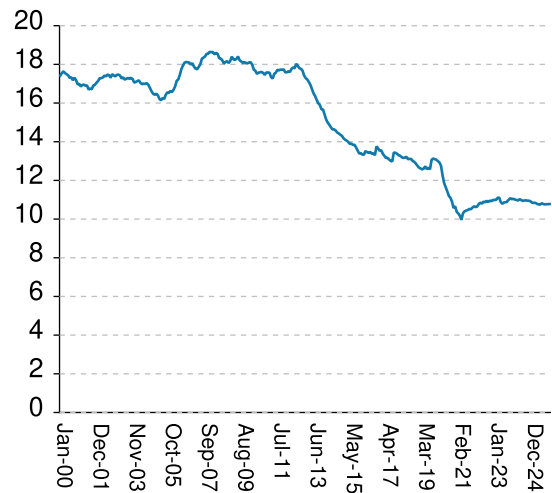
### Releases



### Population x1000



### % Total Population

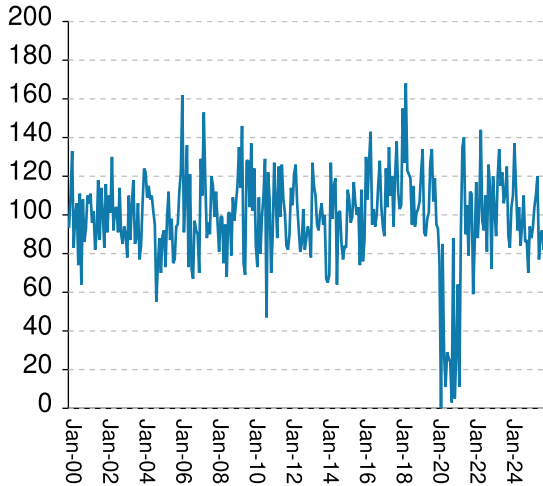


Non-viol/1st-Incar admissions	RISES BY	35	from	212	to	247
Non-viol/1st-Incar releases	RISES BY	11	from	226	to	237
Non-viol/1st-Incar population	RISES BY	10	from	5562	to	5572
Non-viol/1st-Incar % of total population	RISES BY	.01%	from	10.77%	to	10.78%

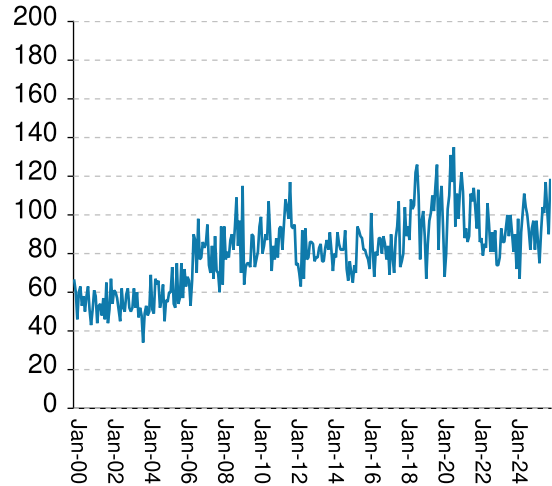
## 'Seven Deadly Sin', by month, Jan-2000 to Dec-2025

Tough legislation in 1995 imposed mandatory ten-year minimum terms for kidnapping, armed robbery, rape, aggravated sodomy, aggravated sexual battery, and aggravated child molestation, and a minimum of 25 years for murder. A second conviction resulted in life without parole. As predicted, longer prison terms caused population to climb steeply for about a decade. It then began to level off, as releases started catching up with admissions. The 2008 dip in percentage of total population (bottom right) was caused by the surge of methamphetamine convictions (Page MO-03). Note: these graphs include inmates convicted before 1995.

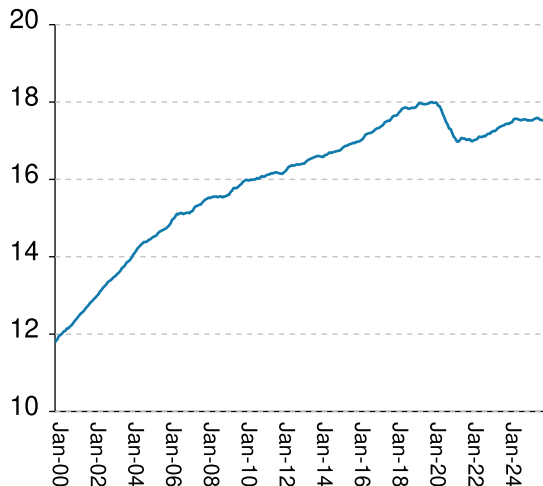
### Admissions



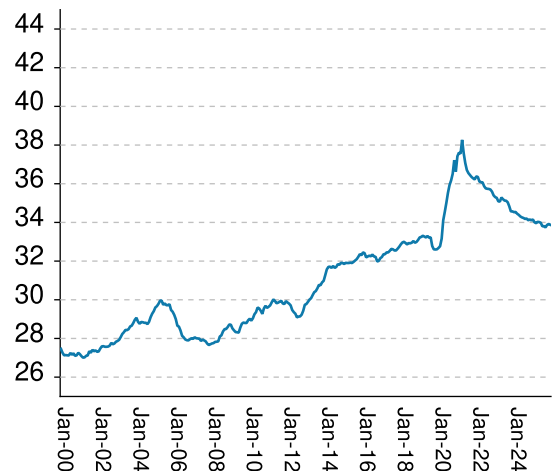
### Releases



### Population x1000



### % Total Population



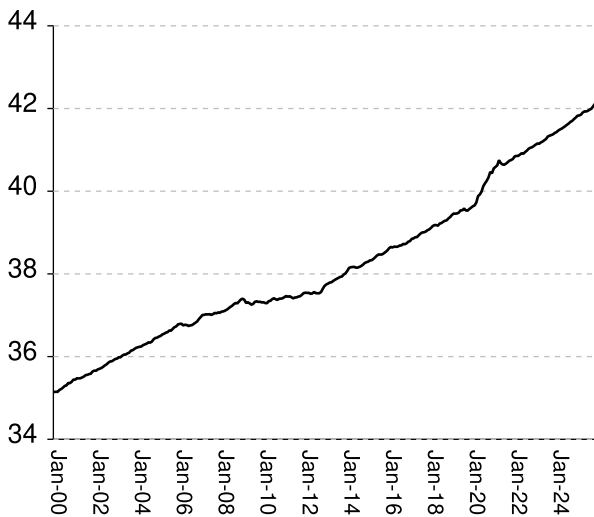
"Seven Deadly Sin" admissions	RISES BY	19	from	82	to	101
"Seven Deadly Sin" releases	RISES BY	28	from	90	to	118
"Seven Deadly Sin" population	falls by	17	from	17523	to	17506
"Seven Deadly Sin" % of total population	falls by	.04%	from	33.92%	to	33.88%

Inmate subpopulation counts and percentages, for the past 48 months										
Month	Methamphetamine						1st Incar Non-Violent		Seven Deadly Sins	
	Total Number	Total Percent	White Number	White Percent	Non White Number	Non White Percent	Number	Percent	Number	Percent
Jan-22	6894	14.76%	5030	72.96%	1899	27.55%	4962	10.62%	16991	36.38%
Feb-22	6922	14.81%	5053	73.00%	1926	27.82%	4979	10.65%	16990	36.35%
Mar-22	7044	14.95%	5088	72.23%	1963	27.87%	5082	10.78%	17019	36.11%
Apr-22	7064	14.97%	5100	72.20%	1971	27.90%	5123	10.85%	17028	36.08%
May-22	7105	15.04%	5124	72.12%	2005	28.22%	5104	10.80%	17046	36.07%
Jun-22	7229	15.16%	5198	71.90%	2040	28.22%	5198	10.90%	17107	35.87%
Jul-22	7265	15.19%	5209	71.70%	2063	28.40%	5195	10.87%	17098	35.76%
Aug-22	7321	15.30%	5262	71.88%	2088	28.52%	5232	10.94%	17095	35.74%
Sep-22	7352	15.34%	5243	71.31%	2115	28.77%	5219	10.89%	17124	35.73%
Oct-22	7362	15.36%	5272	71.61%	2121	28.81%	5247	10.95%	17114	35.70%
Nov-22	7400	15.35%	5319	71.88%	2124	28.70%	5272	10.93%	17159	35.59%
Dec-22	7432	15.31%	5314	71.50%	2124	28.58%	5329	10.98%	17182	35.40%
Jan-23	7490	15.40%	5349	71.42%	2161	28.85%	5344	10.99%	17180	35.31%
Feb-23	7555	15.47%	5386	71.29%	2189	28.97%	5369	10.99%	17226	35.27%
Mar-23	7640	15.54%	5438	71.18%	2208	28.90%	5457	11.10%	17250	35.09%
Apr-23	7632	15.52%	5443	71.32%	2195	28.76%	5462	11.11%	17246	35.08%
May-23	7507	15.33%	5349	71.25%	2189	29.16%	5325	10.88%	17279	35.29%
Jun-23	7519	15.28%	5324	70.81%	2201	29.27%	5311	10.79%	17327	35.20%
Jul-23	7587	15.36%	5385	70.98%	2243	29.56%	5362	10.86%	17349	35.13%
Aug-23	7612	15.39%	5355	70.35%	2262	29.72%	5377	10.87%	17371	35.12%
Sep-23	7615	15.34%	5350	70.26%	2269	29.80%	5409	10.90%	17388	35.04%
Oct-23	7714	15.44%	5418	70.24%	2310	29.95%	5497	11.00%	17399	34.83%
Nov-23	7795	15.46%	5462	70.07%	2337	29.98%	5585	11.08%	17433	34.57%
Dec-23	7783	15.43%	5454	70.08%	2333	29.98%	5565	11.03%	17441	34.57%
Jan-24	7769	15.39%	5442	70.05%	2354	30.30%	5581	11.05%	17434	34.53%
Feb-24	7781	15.39%	5422	69.68%	2362	30.36%	5568	11.01%	17466	34.54%
Mar-24	7768	15.31%	5389	69.37%	2382	30.66%	5574	10.99%	17478	34.45%
Apr-24	7806	15.30%	5397	69.14%	2423	31.04%	5593	10.96%	17548	34.39%
May-24	7859	15.35%	5410	68.84%	2452	31.20%	5648	11.03%	17571	34.31%
Jun-24	7839	15.29%	5397	68.85%	2445	31.19%	5629	10.98%	17562	34.26%
Jul-24	7823	15.25%	5372	68.67%	2477	31.66%	5613	10.94%	17555	34.23%
Aug-24	7817	15.24%	5344	68.36%	2475	31.66%	5621	10.96%	17535	34.18%
Sep-24	7836	15.29%	5349	68.26%	2488	31.75%	5620	10.97%	17530	34.20%
Oct-24	7860	15.28%	5372	68.35%	2488	31.65%	5634	10.95%	17548	34.11%
Nov-24	7827	15.23%	5343	68.26%	2484	31.74%	5626	10.95%	17552	34.15%
Dec-24	7838	15.24%	5336	68.08%	2502	31.92%	5614	10.91%	17546	34.11%
Jan-25	7801	15.21%	5298	67.91%	2503	32.09%	5559	10.84%	17519	34.15%
Feb-25	7885	15.30%	5326	67.55%	2559	32.45%	5587	10.84%	17531	34.01%
Mar-25	7850	15.21%	5288	67.36%	2573	32.78%	5595	10.84%	17522	33.96%
Apr-25	7771	15.09%	5213	67.08%	2593	33.37%	5559	10.79%	17529	34.03%
May-25	7750	15.02%	5153	66.49%	2597	33.51%	5552	10.76%	17558	34.02%
Jun-25	7748	14.98%	5147	66.43%	2629	33.93%	5562	10.75%	17577	33.98%
Jul-25	7788	14.96%	5149	66.11%	2639	33.89%	5631	10.82%	17593	33.80%
Aug-25	7756	14.93%	5114	65.94%	2642	34.06%	5599	10.78%	17569	33.81%
Sep-25	7750	14.90%	5111	65.95%	2649	34.18%	5594	10.76%	17542	33.74%
Oct-25	7694	14.87%	5065	65.83%	2629	34.17%	5576	10.77%	17531	33.87%
Nov-25	7661	14.83%	5035	65.72%	2629	34.32%	5562	10.77%	17523	33.92%
Dec-25	7635	14.78%	5000	65.49%	2636	34.53%	5572	10.78%	17506	33.88%

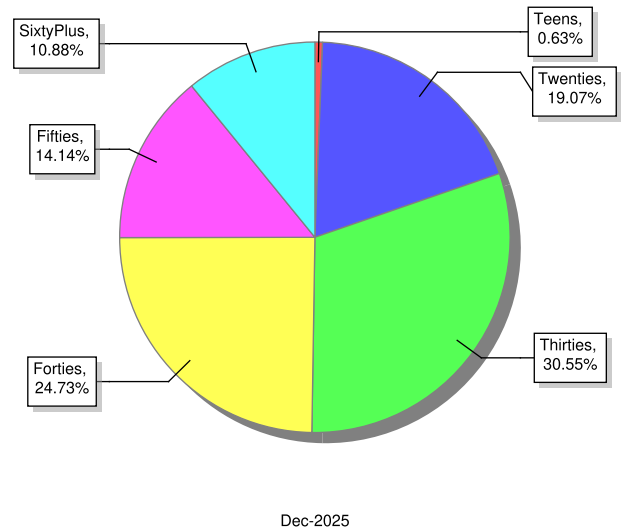
## Overview of inmate age statistics, Jan-2000 to Dec-2025

The "aging inmate population" is a concern in correctional systems throughout America, including Georgia. Here, the increase in inmate age is the result of several factors. Teenagers have been steered away from prison by increased usage of probation and other alternatives, at least for their first convictions. And there has been a surge of middle-aged male sex offenders due to the expanding "It's OK to tell" ethos. But most importantly, more severe sentence lengths and release policies have greatly increased the length of time that most offenders -- especially violent ones -- spend in prison, thereby increasing their average age.

### Average age since 2000



### Current Age

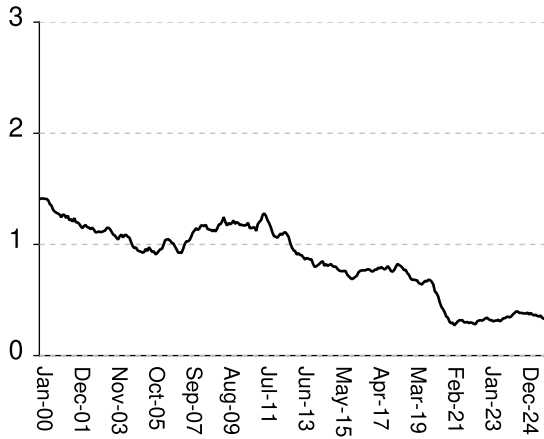


Average age of active inmates	RISES BY	.03	from	42.11	to	42.14
Number in their teens	falls by	7	from	332	to	325
Percentage in their teens	falls by	.01%	from	.64%	to	.63%
Number in their twenties	falls by	37	from	9,891	to	9,854
Percentage in their twenties	falls by	.08%	from	19.15%	to	19.07%
Number in their thirties	...	...	...	level	at	15,782
Percentage in their thirties	...	...	...	level	at	30.55%
Number in their forties	RISES BY	31	from	12,744	to	12,775
Percentage in their forties	RISES BY	.06%	from	24.67%	to	24.73%
Number in their fifties	falls by	17	from	7,323	to	7,306
Percentage in their fifties	falls by	.04%	from	14.18%	to	14.14%
Number age sixty and up	RISES BY	23	from	5,599	to	5,622
Percentage age sixty and up	RISES BY	.04%	from	10.84%	to	10.88%

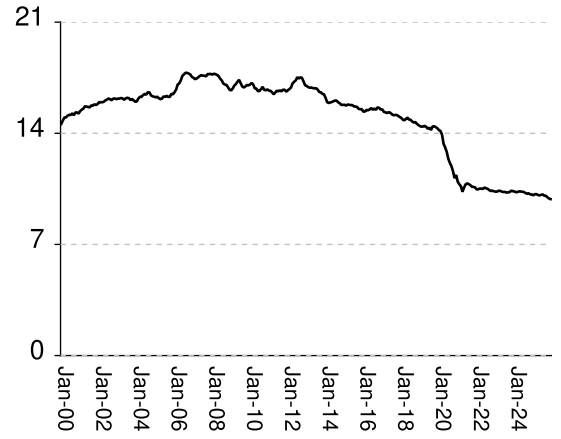
# Monthly counts of inmates by age group, Jan-2000 to Dec-2025

Y-axis of Twenties/Thirties/Forties/Fifties runs from 0 to 21,000. Y-axis of Teens/Sixty+ runs from 0 to 3,000.

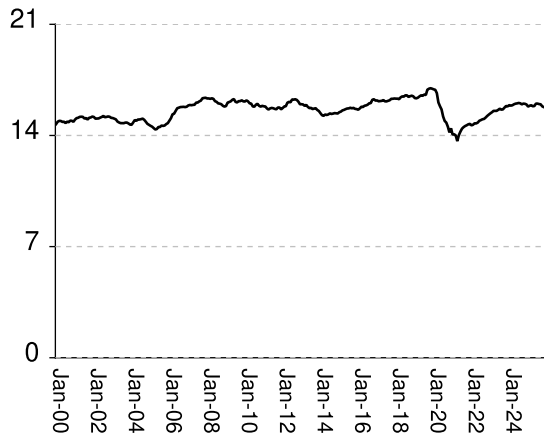
## Teens x 1000



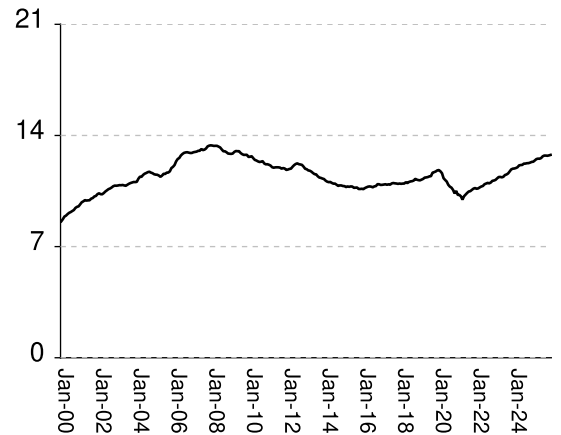
## Twenties x 1000



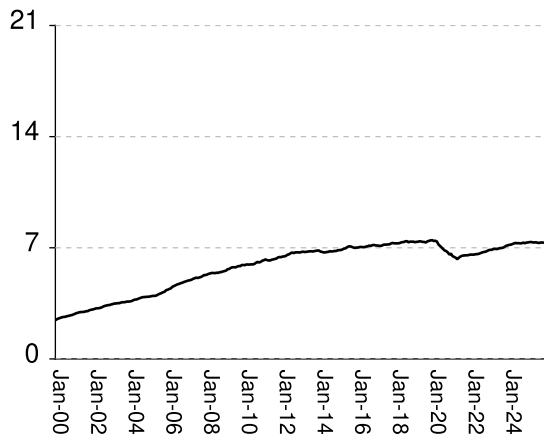
## Thirties x 1000



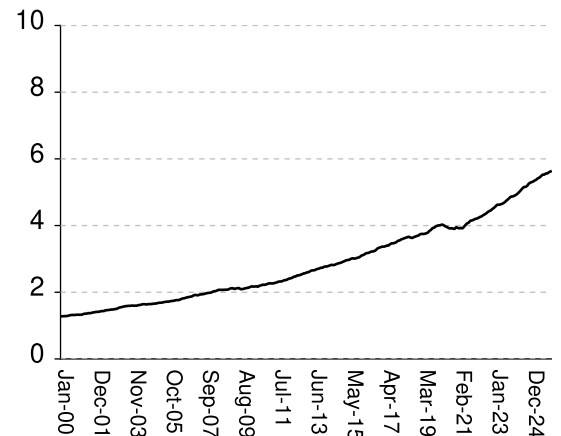
## Forties x 1000



## Fifties x 1000



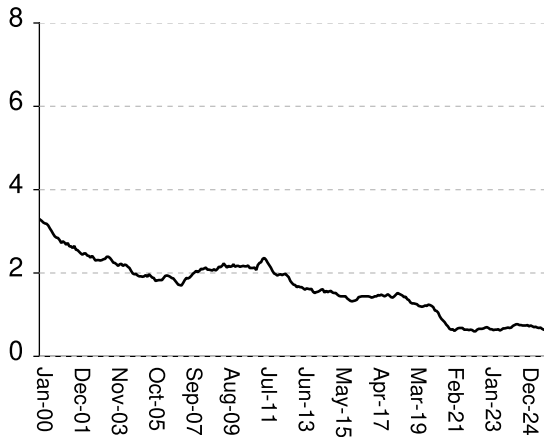
## Sixty & Up x 1000



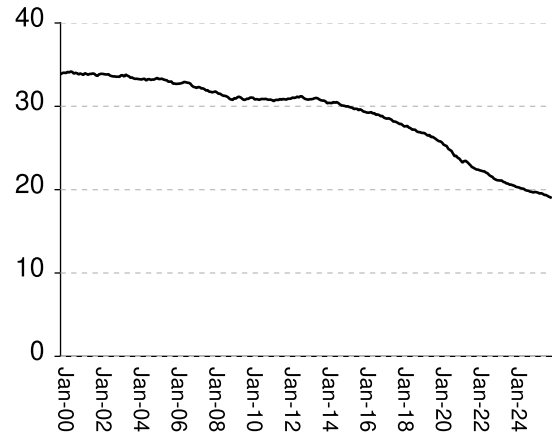
# Monthly percentages of inmates by age group, Jan-2000 to Dec-2025

Y-axis of Twenties/Thirties/Forties/Fifties runs from 0% to 40%. Y-axis of Teens/Sixty+ runs from 0% to 8%

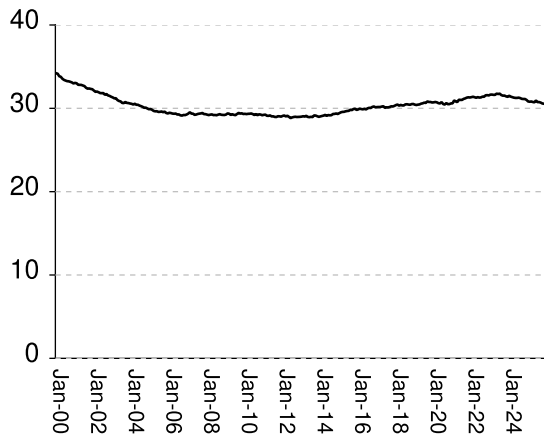
## Teens (%)



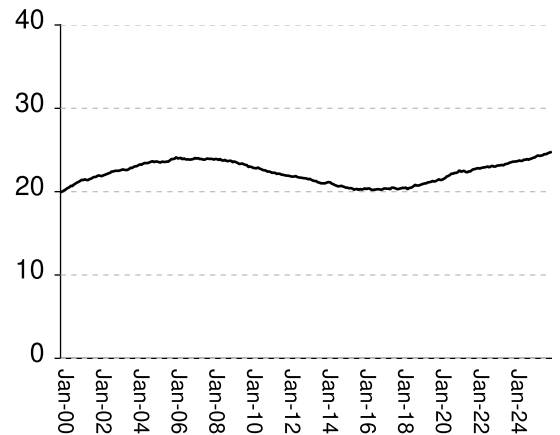
## Twenties (%)



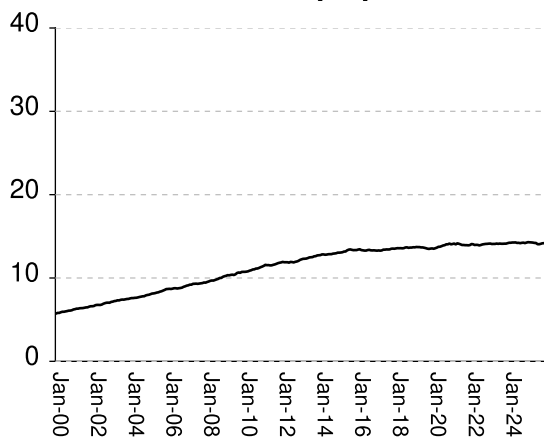
## Thirties (%)



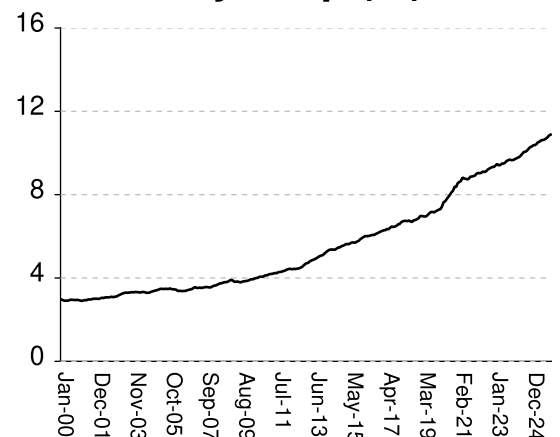
## Forties (%)



## Fifties (%)



## Sixty & Up (%)

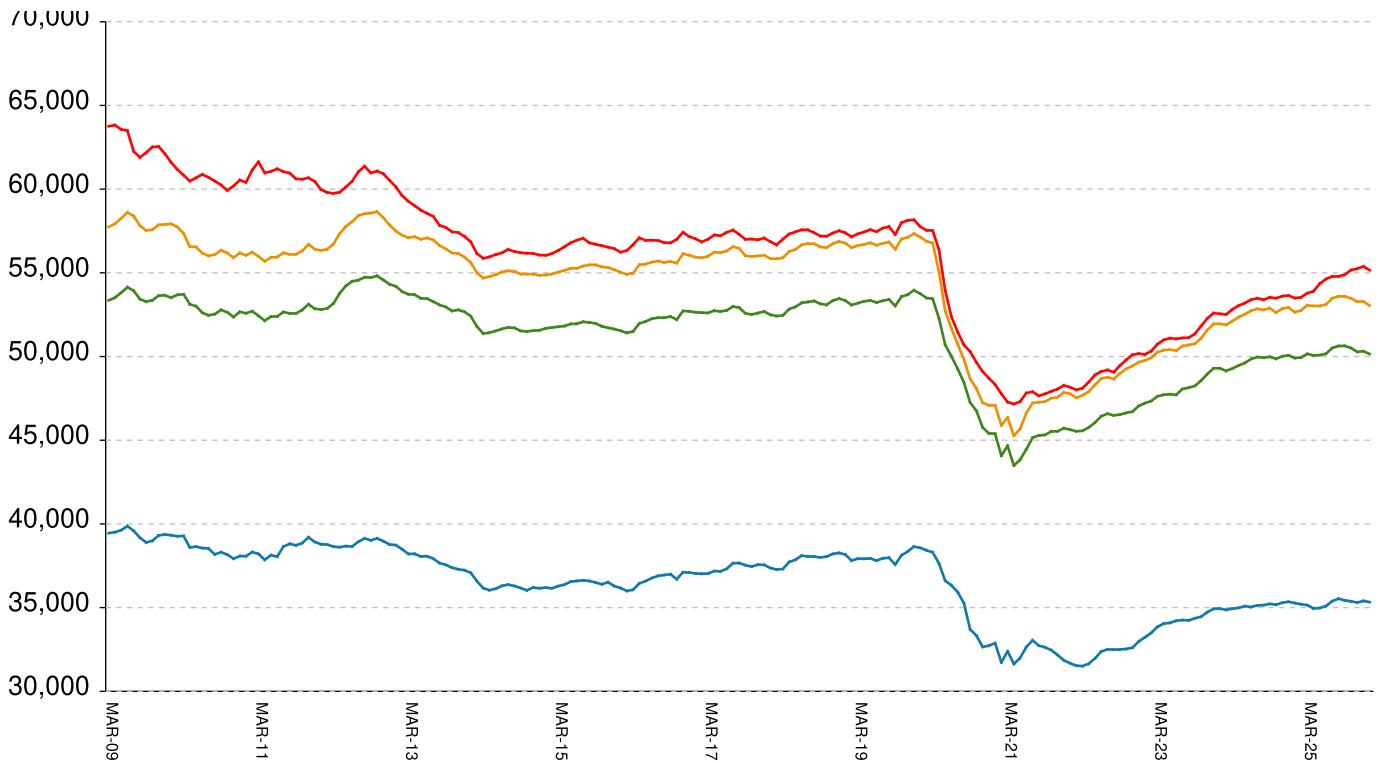


Inmate counts & percentages by age, for past 48 months													
Month	Avg Age	Teens		Twenties		Thirties		Forties		Fifties		Sixty & Up	
		Num-ber	Per-cent	Num-ber	Per-cent	Num-ber	Per-cent	Num-ber	Per-cent	Num-ber	Per-cent	Num-ber	Per-cent
Jan-22	40.84	293	0.63%	10470	22.42%	14638	31.34%	10642	22.79%	6570	14.07%	4207	9.01%
Feb-22	40.85	298	0.64%	10471	22.40%	14674	31.39%	10667	22.82%	6567	14.05%	4227	9.04%
Mar-22	40.85	295	0.63%	10518	22.32%	14765	31.33%	10730	22.77%	6577	13.96%	4256	9.03%
Apr-22	40.88	285	0.60%	10511	22.27%	14758	31.27%	10786	22.85%	6600	13.98%	4271	9.05%
May-22	40.92	282	0.60%	10495	22.21%	14809	31.34%	10819	22.89%	6602	13.97%	4306	9.11%
Jun-22	40.91	307	0.64%	10581	22.19%	14925	31.29%	10929	22.92%	6633	13.91%	4333	9.09%
Jul-22	40.95	315	0.66%	10536	22.04%	14968	31.31%	10971	22.95%	6675	13.96%	4361	9.12%
Aug-22	40.98	318	0.66%	10504	21.96%	15019	31.40%	11013	23.02%	6711	14.03%	4402	9.20%
Sep-22	41.03	315	0.66%	10422	21.75%	15041	31.39%	10984	22.92%	6739	14.06%	4434	9.25%
Oct-22	41.05	322	0.67%	10364	21.62%	15127	31.56%	11038	23.03%	6754	14.09%	4452	9.29%
Nov-22	41.06	334	0.69%	10387	21.54%	15228	31.58%	11140	23.10%	6801	14.10%	4497	9.33%
Dec-22	41.09	341	0.70%	10348	21.32%	15311	31.55%	11162	23.00%	6853	14.12%	4530	9.33%
Jan-23	41.13	329	0.68%	10325	21.22%	15391	31.64%	11201	23.02%	6872	14.13%	4573	9.40%
Feb-23	41.15	318	0.65%	10327	21.14%	15459	31.65%	11293	23.12%	6876	14.08%	4624	9.47%
Mar-23	41.15	318	0.65%	10380	21.11%	15547	31.62%	11381	23.15%	6926	14.09%	4624	9.41%
Apr-23	41.18	308	0.63%	10372	21.10%	15548	31.62%	11389	23.16%	6929	14.09%	4632	9.42%
May-23	41.2	314	0.64%	10327	21.09%	15548	31.76%	11364	23.21%	6920	14.13%	4648	9.49%
Jun-23	41.23	315	0.64%	10300	20.93%	15613	31.72%	11395	23.15%	6939	14.10%	4670	9.49%
Jul-23	41.26	322	0.65%	10309	20.88%	15685	31.76%	11506	23.30%	6979	14.13%	4705	9.53%
Aug-23	41.32	308	0.62%	10265	20.75%	15625	31.59%	11541	23.33%	6980	14.11%	4751	9.61%
Sep-23	41.34	318	0.64%	10281	20.72%	15642	31.52%	11605	23.38%	7005	14.11%	4787	9.65%
Oct-23	41.36	335	0.67%	10293	20.60%	15753	31.53%	11732	23.48%	7055	14.12%	4834	9.68%
Nov-23	41.38	336	0.67%	10387	20.60%	15854	31.44%	11862	23.53%	7121	14.12%	4870	9.66%
Dec-23	41.41	345	0.68%	10352	20.52%	15833	31.38%	11908	23.60%	7152	14.18%	4873	9.66%
Jan-24	41.43	350	0.69%	10336	20.47%	15908	31.51%	11920	23.61%	7183	14.23%	4894	9.69%
Feb-24	41.47	344	0.68%	10287	20.34%	15879	31.40%	11950	23.63%	7195	14.23%	4919	9.73%
Mar-24	41.49	352	0.69%	10301	20.30%	15901	31.34%	11998	23.65%	7233	14.26%	4956	9.77%
Apr-24	41.51	370	0.73%	10339	20.26%	15961	31.28%	12115	23.74%	7275	14.26%	5002	9.80%
May-24	41.54	383	0.75%	10334	20.18%	16002	31.25%	12137	23.70%	7307	14.27%	5053	9.87%
Jun-24	41.57	397	0.77%	10320	20.13%	16018	31.25%	12145	23.69%	7282	14.21%	5108	9.96%
Jul-24	41.61	396	0.77%	10307	20.10%	16045	31.28%	12224	23.83%	7294	14.22%	5155	10.05%
Aug-24	41.64	384	0.75%	10238	19.95%	16025	31.23%	12229	23.83%	7276	14.18%	5159	10.06%
Sep-24	41.68	384	0.75%	10192	19.89%	15959	31.14%	12252	23.91%	7287	14.22%	5182	10.11%
Oct-24	41.7	382	0.74%	10222	19.87%	16006	31.12%	12258	23.83%	7323	14.24%	5249	10.20%
Nov-24	41.74	378	0.74%	10156	19.76%	15993	31.12%	12290	23.92%	7290	14.19%	5285	10.28%
Dec-24	41.78	379	0.74%	10147	19.73%	15951	31.01%	12333	23.98%	7328	14.25%	5302	10.31%
Jan-25	41.82	386	0.75%	10093	19.67%	15818	30.83%	12347	24.07%	7338	14.30%	5322	10.37%
Feb-25	41.83	370	0.72%	10164	19.72%	15872	30.79%	12427	24.11%	7359	14.28%	5352	10.38%
Mar-25	41.85	383	0.74%	10165	19.70%	15901	30.82%	12512	24.25%	7362	14.27%	5378	10.42%
Apr-25	41.9	369	0.72%	10114	19.64%	15841	30.76%	12539	24.35%	7340	14.25%	5419	10.52%
May-25	41.93	362	0.70%	10086	19.54%	15854	30.72%	12534	24.29%	7334	14.21%	5440	10.54%
Jun-25	41.93	367	0.71%	10125	19.57%	16005	30.94%	12577	24.32%	7345	14.20%	5486	10.61%
Jul-25	41.95	357	0.69%	10149	19.50%	16006	30.75%	12685	24.37%	7319	14.06%	5528	10.62%
Aug-25	41.97	352	0.68%	10066	19.37%	15977	30.75%	12732	24.50%	7302	14.05%	5528	10.64%
Sep-25	42	360	0.69%	10068	19.36%	15961	30.69%	12732	24.49%	7333	14.10%	5561	10.69%
Oct-25	42.05	341	0.66%	9968	19.26%	15834	30.59%	12721	24.58%	7329	14.16%	5564	10.75%
Nov-25	42.11	332	0.64%	9891	19.15%	15782	30.55%	12744	24.67%	7323	14.18%	5599	10.84%
Dec-25	42.14	325	0.63%	9854	19.07%	15782	30.55%	12775	24.73%	7306	14.14%	5622	10.88%



# All housed offenders under GDC jurisdiction

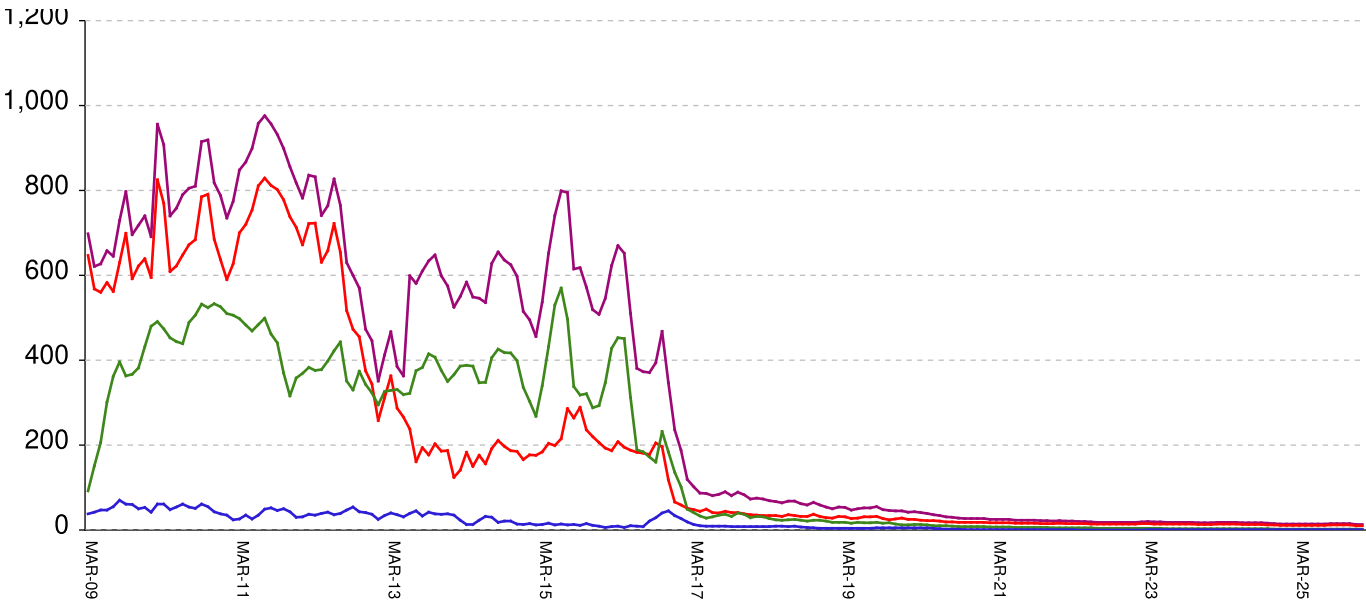
March 20, 2009 through January 30, 2026



<b>All in bed + probs in jail + backlog</b>	<b>falls by</b>	<b>157</b>	<b>from</b>	<b>55,161</b>	<b>to</b>	<b>55,004</b>
Probationers in jail	...	...	...	13	at	13
Inmate jail backlog	RISES BY	25	from	2,157	to	2,182
<b>All in beds: inmate + Prob + parole</b>	<b>falls by</b>	<b>182</b>	<b>from</b>	<b>52,991</b>	<b>to</b>	<b>52,809</b>
Total probationers in beds	falls by	70	from	2,899	to	2,829
Probation detention centers	falls by	66	from	1,430	to	1,364
Probation boot camps	falls by	...	from		to	
Probation RSAT	falls by	4	from	1,469	to	1,465
Parole revocation centers	falls by	...	from		to	
<b>All in inmate beds: state + other</b>	<b>falls by</b>	<b>112</b>	<b>from</b>	<b>50,092</b>	<b>to</b>	<b>49,980</b>
Other inmate facilities:	falls by	59	from	14,790	to	14,731
Inmate boot camps	...	...	...	1	at	1
Private prisons	falls by	24	from	8,098	to	8,074
County prisons	falls by	34	from	3,960	to	3,926
Transitional centers	falls by	1	from	2,731	to	2,730
<b>In state prisons only</b>	<b>falls by</b>	<b>53</b>	<b>from</b>	<b>35,302</b>	<b>to</b>	<b>35,249</b>

# Probationers in jail awaiting placement in facilities

March 20, 2009 through January 30, 2026



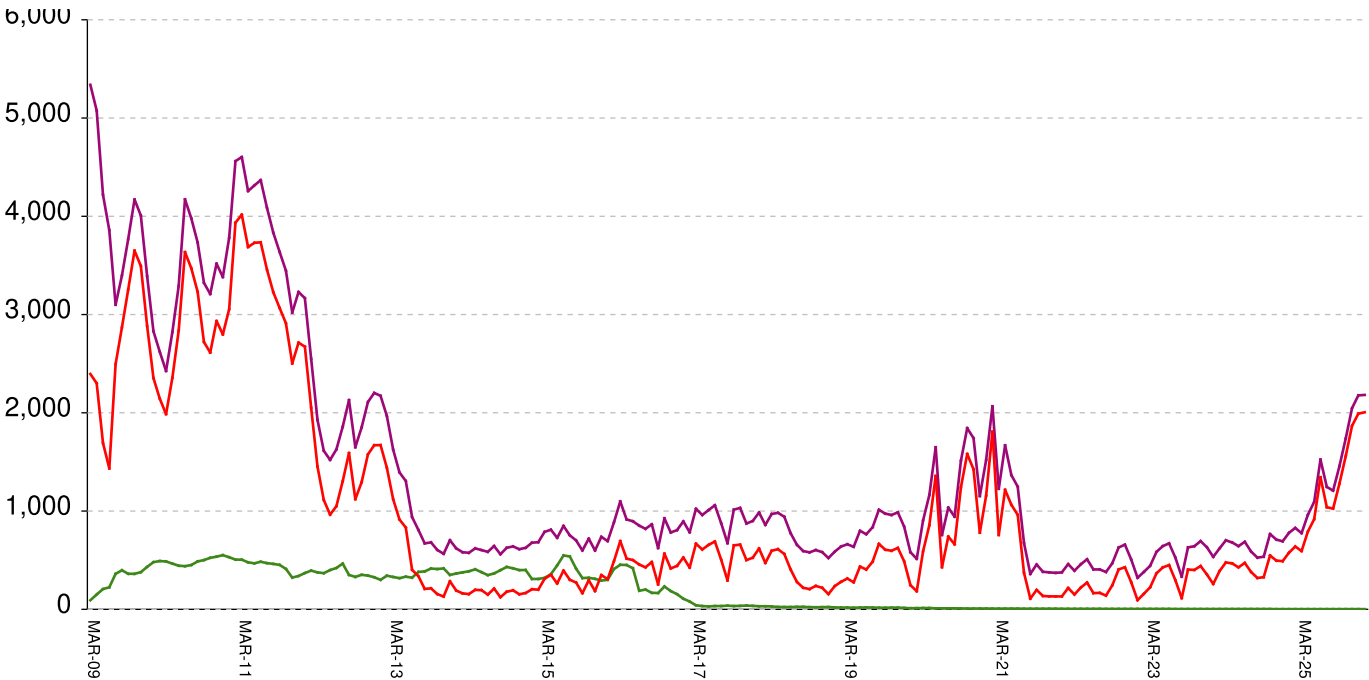
This graph shows, for each Friday since March 20 2009, the number of sentenced felony probationers who were waiting in jail for placement in facilities that GDC operates for housing probationers -- detention centers, probation residential substance abuse treatment (RSAT) centers, and probation boot camps. Counts include both those offenders sentenced directly from court, and those whose street probation was revoked.

Total probationers waiting in jail	...	...	...	level	at	13
...waiting for detention centers	...	...	...	level	at	10
...waiting for probation RSAT	...	...	...	level	at	2
...waiting for probation boot camps	...	...	...	level	at	1

The highest number of probationers waiting in jail was	994	on	05-MAR-10
...highest number waiting for detention centers was	859	on	05-MAR-10
...highest number waiting for probation RSAT was	592	on	10-JUL-15
...highest number waiting for probation boot camps was	70	on	18-SEP-09

# State inmates in jail awaiting placement in facilities

March 20, 2009 through January 30, 2026



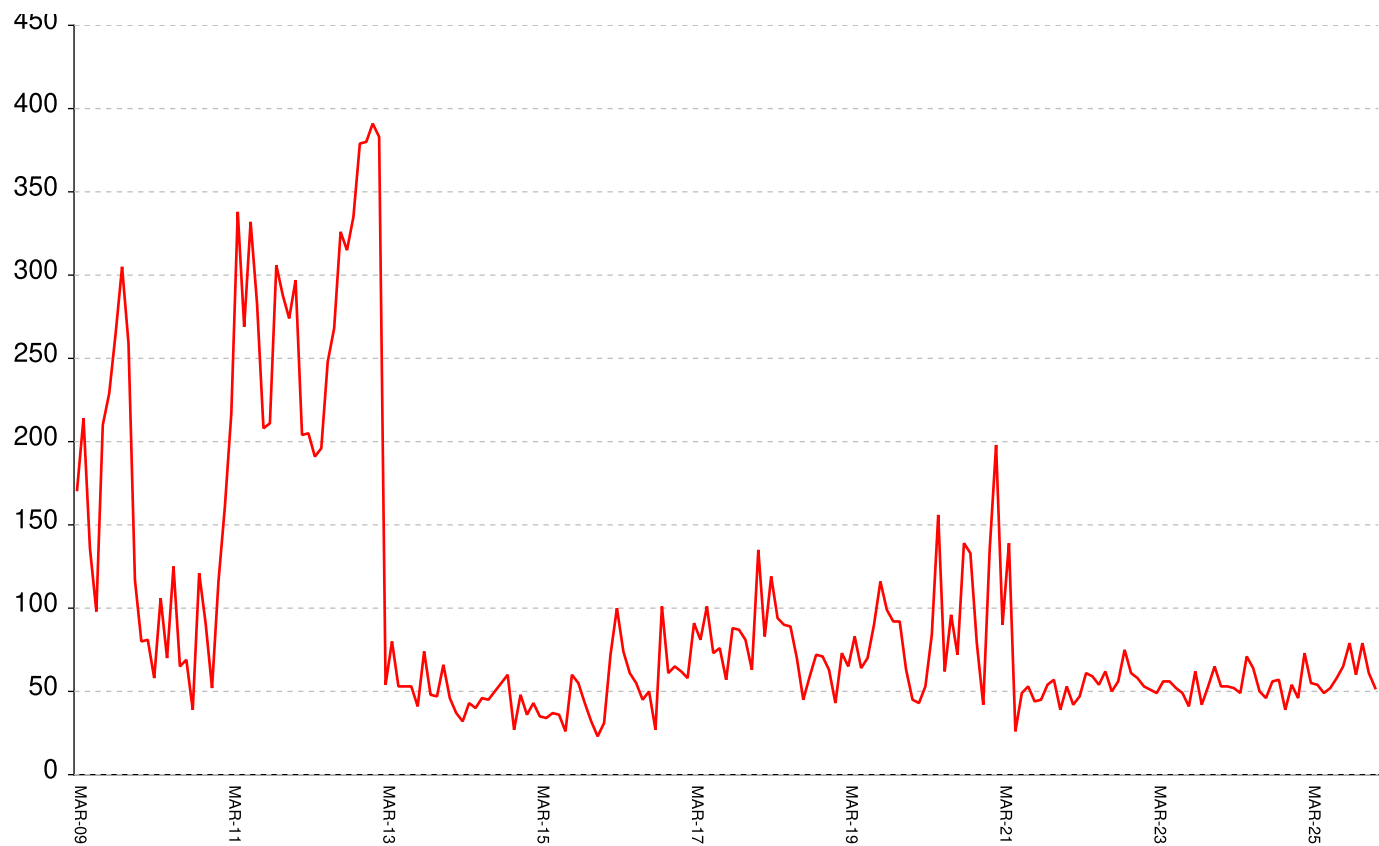
This graph shows, for each Friday since March 2009, the number of prisoners, probationers, and parolees in local jails who have been sentenced or revoked to state prison and whose documents have been received and verified by GDC. Most are almost immediately assigned to a diagnostic center, and are designated as in "admission processing". Of those a few hundred may be in the "transportation delayed" category because there is no room in the assigned diagnostic center, or because the inmate is being held for medical reasons, or for other court proceedings, or other reasons. Those remaining are "ready to be picked up".

Total state inmates waiting in jail	RISES BY	25	from	2157	to	2182
... not yet assigned to a diagnostic center	...	...	...	level	at	9
... total "in admission processing"	RISES BY	25	from	2148	to	2173
... with "transportation delayed"	falls by	2	from	170	to	168
... ready to be picked up	RISES BY	27	from	1978	to	2005

The highest number of state inmates waiting in jail was	5338	on	27-MAR-09
... highest number not asg to a diagnostic center was	2881	on	12-JUN-09
... highest number in admission processing was	4916	on	25-MAR-11
... highest number with transportation delayed was	645	on	14-JAN-11
... highest number ready to be pickup was	4435	on	25-MAR-11

# Female state inmates in jail awaiting pickup

March 20, 2009 through January 30, 2026



This graph shows, for each Friday since March 2009, the number of female state prisoners in local jails who were assigned to diagnostic centers but had not yet been picked up.

Female state inmates in jails waiting picked up falls by 17 from 69 to 52

The highest number of female inmates waiting in jail was 424 on 01-FEB-13

The lowest number of female inmates waiting in jail was 17 on 20-MAR-20

Summary of housed prisoners, parolees, and probationers									
Week Ending	Prison	Parole	Probation			Prison+parole+probation	Jail		Total
	Total inmates	Revocation centers	Prob RSAT	Boot camp	Detention		Inmate backlog	Probationers	Prison+parole+probation+jail
07-Feb-2025	49842		1474		1280	52596	828	14	53438
14-Feb-2025	49917		1494		1305	52716	746	14	53476
21-Feb-2025	49977		1475		1354	52806	778	14	53598
28-Feb-2025	50043		1464		1396	52903	718	14	53635
07-Mar-2025	50081		1449		1390	52920	679	14	53613
14-Mar-2025	50181		1476		1428	53085	664	14	53763
21-Mar-2025	50155		1474		1456	53085	703	14	53802
28-Mar-2025	50212		1477		1471	53160	775	14	53949
04-Apr-2025	50155		1483		1488	53126	772	14	53912
11-Apr-2025	50044		1473		1496	53013	804	14	53831
18-Apr-2025	50040		1449		1489	52978	895	14	53887
25-Apr-2025	50035		1454		1486	52975	962	14	53951
02-May-2025	50070		1461		1501	53032	1094	14	54140
09-May-2025	49969		1446		1504	52919	1192	14	54125
16-May-2025	50043		1435		1473	52951	1355	14	54320
23-May-2025	50107		1428		1501	53036	1453	14	54503
30-May-2025	50224		1437		1509	53170	1477	14	54661
06-Jun-2025	50133		1455		1482	53070	1520	14	54604
13-Jun-2025	50139		1440		1487	53066	1524	14	54604
20-Jun-2025	50045		1425		1525	52995	1543	14	54552
27-Jun-2025	50363		1438		1512	53313	1425	14	54752
04-Jul-2025	50404		1450		1516	53370	1394	14	54778
11-Jul-2025	50529		1433		1531	53493	1191	14	54698
18-Jul-2025	50525		1462		1492	53479	1246	14	54739
25-Jul-2025	50570		1485		1514	53569	1318	14	54901
01-Aug-2025	50604		1492		1499	53595	1266	14	54875
08-Aug-2025	50586		1483		1482	53551	1112	14	54677
15-Aug-2025	50624		1487		1483	53594	1113	14	54721
22-Aug-2025	50654		1478		1463	53595	1204	15	54814
29-Aug-2025	50683		1491		1461	53635	1208	15	54858
05-Sep-2025	50623		1491		1458	53572	1164	15	54751
12-Sep-2025	50671		1504		1474	53649	1168	15	54832
19-Sep-2025	50604		1479		1477	53560	1350	15	54925
26-Sep-2025	50642		1490		1446	53578	1456	15	55049
03-Oct-2025	50592		1496		1426	53514	1545	15	55074
10-Oct-2025	50542		1502		1438	53482	1568	15	55065
17-Oct-2025	50565		1526		1461	53552	1619	15	55186
24-Oct-2025	50468		1540		1470	53478	1738	15	55231
31-Oct-2025	50381		1483		1513	53377	1861	15	55253
07-Nov-2025	50231		1503		1493	53227	1898	15	55140
14-Nov-2025	50276		1516		1485	53277	1907	15	55199
21-Nov-2025	50343		1512		1498	53353	1956	15	55324
28-Nov-2025	50271		1495		1515	53281	2047	15	55343
05-Dec-2025	50325		1472		1501	53298	1989	14	55301
12-Dec-2025	50317		1481		1499	53297	2063	13	55373
19-Dec-2025	50326		1503		1474	53303	2078	13	55394
26-Dec-2025	50291		1493		1474	53258	2177	13	55448
02-Jan-2026	50238		1475		1427	53140	2171	13	55324
09-Jan-2026	50250		1479		1429	53158	1965	13	55136
16-Jan-2026	50195		1483		1436	53114	2042	13	55169
23-Jan-2026	50092		1469		1430	52991	2157	13	55161
30-Jan-2026	49980		1465		1364	52809	2182	13	55004

## Offenders housed in facilities for state prisoners

Week ending	In state prisons	In facilities other than state prisons						Total Inmates
		Transition centers	County prisons	Pre-rel centers	Private prisons	Inmate boot camps	Total others	
07-Feb-2025	35212	2646	4438		7545	1	14630	49842
14-Feb-2025	35219	2641	4451		7605	1	14698	49917
21-Feb-2025	35197	2629	4488		7662	1	14780	49977
28-Feb-2025	35183	2622	4500		7737	1	14860	50043
07-Mar-2025	35161	2624	4515		7780	1	14920	50081
14-Mar-2025	35187	2617	4528		7848	1	14994	50181
21-Mar-2025	35144	2608	4487		7915	1	15011	50155
28-Mar-2025	35103	2612	4520		7976	1	15109	50212
04-Apr-2025	35047	2599	4524		7984	1	15108	50155
11-Apr-2025	34951	2596	4501		7995	1	15093	50044
18-Apr-2025	34906	2591	4515		8027	1	15134	50040
25-Apr-2025	34904	2590	4522		8018	1	15131	50035
02-May-2025	34954	2567	4511		8037	1	15116	50070
09-May-2025	34900	2544	4495		8029	1	15069	49969
16-May-2025	34954	2554	4502		8032	1	15089	50043
23-May-2025	35001	2577	4501		8028	0	15106	50107
30-May-2025	35065	2605	4511		8043	0	15159	50224
06-Jun-2025	35068	2587	4440		8038	0	15065	50133
13-Jun-2025	35092	2599	4416		8032	0	15047	50139
20-Jun-2025	35027	2590	4442		7986	0	15018	50045
27-Jun-2025	35203	2645	4483		8032	0	15160	50363
04-Jul-2025	35284	2652	4430		8038	0	15120	50404
11-Jul-2025	35380	2669	4436		8044	0	15149	50529
18-Jul-2025	35399	2690	4400		8036	0	15126	50525
25-Jul-2025	35464	2698	4363		8045	0	15106	50570
01-Aug-2025	35516	2709	4347		8032	0	15088	50604
08-Aug-2025	35507	2698	4347		8034	0	15079	50586
15-Aug-2025	35522	2714	4349		8039	0	15102	50624
22-Aug-2025	35539	2726	4348		8041	0	15115	50654
29-Aug-2025	35576	2714	4352		8041	0	15107	50683
05-Sep-2025	35478	2721	4352		8072	0	15145	50623
12-Sep-2025	35437	2739	4396		8099	0	15234	50671
19-Sep-2025	35399	2749	4378		8078	0	15205	50604
26-Sep-2025	35420	2732	4384		8106	0	15222	50642
03-Oct-2025	35389	2727	4371		8105	0	15203	50592
10-Oct-2025	35390	2705	4350		8097	0	15152	50542
17-Oct-2025	35402	2716	4337		8110	0	15163	50565
24-Oct-2025	35359	2744	4297		8068	0	15109	50468
31-Oct-2025	35328	2751	4237		8065	0	15053	50381
07-Nov-2025	35288	2748	4167		8028	0	14943	50231
14-Nov-2025	35293	2750	4193		8040	0	14983	50276
21-Nov-2025	35342	2756	4211		8034	0	15001	50343
28-Nov-2025	35305	2745	4168		8053	0	14966	50271
05-Dec-2025	35396	2746	4134		8049	0	14929	50325
12-Dec-2025	35370	2759	4130		8058	0	14947	50317
19-Dec-2025	35414	2755	4107		8049	1	14912	50326
26-Dec-2025	35409	2737	4082		8062	1	14882	50291
02-Jan-2026	35371	2745	4056		8065	1	14867	50238
09-Jan-2026	35363	2780	4032		8074	1	14887	50250
16-Jan-2026	35354	2745	3988		8107	1	14841	50195
23-Jan-2026	35302	2731	3960		8098	1	14790	50092
30-Jan-2026	35249	2730	3926		8074	1	14731	49980

Offenders waiting in local jails for state facilities										
	Probationers waiting in jail				Probationers waiting in jail					
Week ending	.. for PDCs	.. for RSAT	.. for boot camps	Total	Total backlog	Not yet assigned	In adm process	Delayed transport	Ready for pickup	Assigned females
07-Feb-2025	11	2	1	14	828	9	819	180	639	73
14-Feb-2025	11	2	1	14	746	8	738	180	558	68
21-Feb-2025	11	2	1	14	778	7	771	181	590	52
28-Feb-2025	11	2	1	14	718	6	712	180	532	58
07-Mar-2025	11	2	1	14	679	6	673	178	495	56
14-Mar-2025	11	2	1	14	664	6	658	175	483	56
21-Mar-2025	11	2	1	14	703	8	695	173	522	38
28-Mar-2025	11	2	1	14	775	9	766	173	593	55
04-Apr-2025	11	2	1	14	772	9	763	171	592	42
11-Apr-2025	11	2	1	14	804	9	795	169	626	63
18-Apr-2025	11	2	1	14	895	10	885	168	717	50
25-Apr-2025	11	2	1	14	962	9	953	162	791	54
02-May-2025	11	2	1	14	1094	9	1085	168	917	49
09-May-2025	11	2	1	14	1192	9	1183	171	1012	58
16-May-2025	11	2	1	14	1355	8	1347	178	1169	62
23-May-2025	11	2	1	14	1453	8	1445	181	1264	69
30-May-2025	11	2	1	14	1477	9	1468	184	1284	58
06-Jun-2025	11	2	1	14	1520	8	1512	176	1336	65
13-Jun-2025	11	2	1	14	1524	8	1516	172	1344	52
20-Jun-2025	11	2	1	14	1543	9	1534	179	1355	46
27-Jun-2025	11	2	1	14	1425	9	1416	179	1237	35
04-Jul-2025	11	2	1	14	1394	9	1385	202	1183	53
11-Jul-2025	11	2	1	14	1191	9	1182	201	981	50
18-Jul-2025	11	2	1	14	1246	9	1237	198	1039	58
25-Jul-2025	11	2	1	14	1318	9	1309	203	1106	70
01-Aug-2025	11	2	1	14	1266	9	1257	192	1065	59
08-Aug-2025	11	2	1	14	1112	11	1101	177	924	40
15-Aug-2025	11	2	1	14	1113	10	1103	174	929	51
22-Aug-2025	12	2	1	15	1204	10	1194	171	1023	60
29-Aug-2025	12	2	1	15	1208	8	1200	175	1025	65
05-Sep-2025	12	2	1	15	1164	8	1156	177	979	63
12-Sep-2025	12	2	1	15	1168	8	1160	178	982	68
19-Sep-2025	12	2	1	15	1350	8	1342	176	1166	61
26-Sep-2025	12	2	1	15	1456	9	1447	169	1278	79
03-Oct-2025	12	2	1	15	1545	8	1537	169	1368	75
10-Oct-2025	12	2	1	15	1568	8	1560	171	1389	66
17-Oct-2025	12	2	1	15	1619	9	1610	171	1439	73
24-Oct-2025	12	2	1	15	1738	8	1730	172	1558	60
31-Oct-2025	12	2	1	15	1861	10	1851	167	1684	53
07-Nov-2025	12	2	1	15	1898	11	1887	168	1719	58
14-Nov-2025	12	2	1	15	1907	12	1895	169	1726	67
21-Nov-2025	12	2	1	15	1956	11	1945	175	1770	86
28-Nov-2025	12	2	1	15	2047	11	2036	168	1868	79
05-Dec-2025	11	2	1	14	1989	10	1979	171	1808	72
12-Dec-2025	10	2	1	13	2063	11	2052	172	1880	79
19-Dec-2025	10	2	1	13	2078	11	2067	172	1895	53
26-Dec-2025	10	2	1	13	2177	11	2166	175	1991	61
02-Jan-2026	10	2	1	13	2171	11	2160	172	1988	45
09-Jan-2026	10	2	1	13	1965	10	1955	175	1780	34
16-Jan-2026	10	2	1	13	2042	9	2033	175	1858	59
23-Jan-2026	10	2	1	13	2157	9	2148	170	1978	69
30-Jan-2026	10	2	1	13	2182	9	2173	168	2005	52