

# Friday Report - overview and contents

The pages in The Friday Report are about adult offenders in Georgia's prisons and jails. They contain statistical snapshots and trends in the populations and movements of offenders in the state prison system, on probation, on parole, and in local jails. Information comes from databases of the Georgia Department of Corrections (GDC) and the Board of Pardons and Paroles, and from data provided by local jailers. Information is summarized into tables in the GDC/Parole Data Warehouse, and is extracted into these pages each Friday. Pages are organized according to the table that supplied the data.

<p><b>The Monthly Research Table</b>, named "MO_RESRCH" or simply "MO", contains data about state prisoners, grouped into statistically interesting categories. The table contains one record per month, from January 2000 to the present. Despite its being "monthly", it is updated weekly, because some data trickles in for several weeks before it becomes stable history.</p>	
Page	Content
MO-01	Clemencies and maxouts. Monthly graph from 2000 to present shows the monthly departures from prison via actions by the Georgia Parole Board (clemencies), and via service of 100% of the court ordered sentence (maxouts)
MO-02	48 months of releases. Table shows counts and percentages of releases via clemencies and maxouts, with and without probation to follow, for each of the past 48 months.
MO-03	Methamphetamine. Monthly graph from 2000 to present shows admissions, departures, population, and percent of population of inmates with a current offense of methamphetamine possession, sale, manufacturing, or trafficking, and the changing racial composition of the methamphetamine population
MO-04	Non-violent first incarcerants. Monthly graph from 2000 to present shows admissions, departures, population, and percent of population of inmates without violent or sex crimes, who are serving their first Georgia felony incarceration.
MO-05	Seven Deadly Sins. Monthly graph from 2000 to present shows admissions, departures, population, and percent of population of inmates convicted of kidnapping, armed robbery, rape, aggravated sodomy, aggravated sexual battery, and aggravated child molestation, for whom especially severe penalties are prescribed.
MO-06	48 months of inmate subpopulations. Table shows number and percentage of white and non-white inmates with methamphetamine offenses, and non-violent first incarcerants, and inmates convicted of the Seven Deadly Sins.
MO-07	Inmate age overview. Line graph shows the average age of the inmate population, by month from 2000 to the present. Pie chart shows the number of currently active inmates in their teens, twenties, thirties, forties, fifties, and age sixty+.
MO-08	Counts by age group. Graphs show the count, by month from 2000 to the present, of inmates in their teens, twenties, thirties, forties, fifties, and age sixty+.
MO-09	Percentages by age group. Graphs show the percentages, by month from 2000 to the present, of inmates in their teens, twenties, thirties, forties, fifties, and age sixty+.
MO-10	48 months of inmate ages. Table shows average age of the standing population, and counts and percentages of teens, twenties, thirties, forties, fifties, and sixty+, for each of the past 48 months.

# Friday Report - overview and contents (continued)

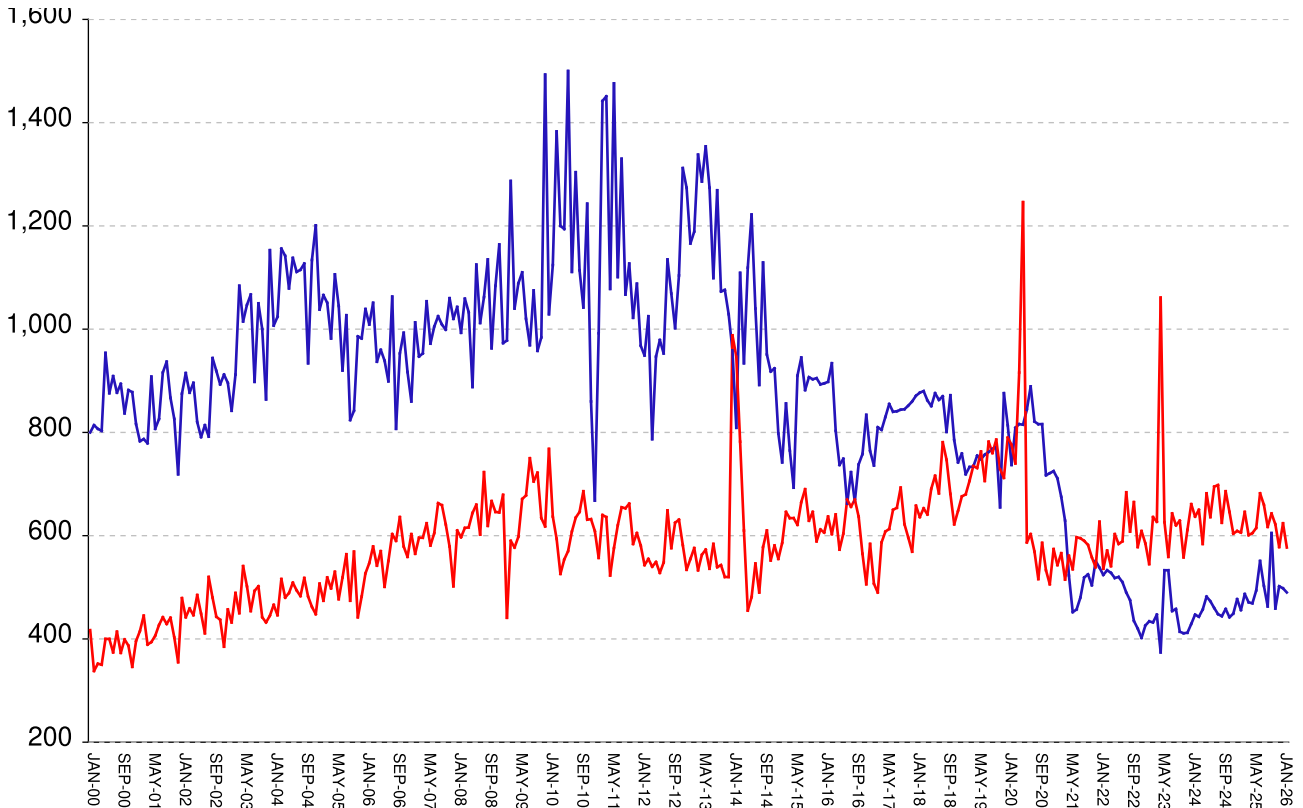
**The MSR Table** is based on the Management Summary Report (MSR), a snapshot report posted each week in GDC's Scribe database. MSR\_RESRCH gathers that data into weekly trends, with one record for each Friday since March 20th, 2009

Page	Content
<b>MSR-01</b>	All housed offenders. Weekly graph from March 20, 2009 to present, showing counts of inmates in state prisons, transitional centers, county prisons, private prisons, inmate boot camps, parole revocation centers, probation Residential Substance Abuse Treatment (RSAT), probation boot camps, probation detention centers, plus the inmate jail backlog and probationers in jail waiting for state facilities.
<b>MSR-02</b>	Probationers in jail. Weekly graph from March 20, 2009 to present, showing counts of probationers in local jails awaiting placement in probation detention centers, probation RSAT centers, and probation boot camps.
<b>MSR-03</b>	State inmates in jail. Weekly graph from March 20, 2009 to present, showing counts of state inmates in local jails awaiting placement in state prison facilities – including those who have not yet been assigned to a diagnostic center, those whose transportation has been delayed for some reason, and those who are ready to be picked up.
<b>MSR-04</b>	Female state inmates in jail. Weekly graph from March 20, 2009 to present, showing counts of female state inmates awaiting placement in a state prison for females.
<b>MSR-05</b>	52-week table: housed offenders. Data for each of the past 52 weeks, showing total prison inmates, parolees in revocation centers, probationers in RSAT/boot camp/detention centers, inmate jail backlog, probationers in jail waiting for facilities, with subtotals.
<b>MSR-06</b>	52-week table: state prisoners. Data for each of the past 52 weeks, showing inmates in state prisons, transition centers, county prisons, pre-release centers, private prisons, and inmate boot camps, with subtotals.
<b>MSR-07</b>	52-week table: waiting in jail. Data for each of the past 52 weeks, showing probationers waiting for detention centers, RSAT, and boot camp; and state prisoners not yet assigned to diagnostic centers, in admission process, with delayed transport, and ready for pickup, with subtotals.

## Releases by clemency and maxout, Jan-2000 to Feb-2026

There are two main ways of being released from a Georgia prison -- by actions of the Board of Pardons and Paroles ("Clemencies") and by service of 100% of the court-ordered sentences ("Maxouts").

"Clemency" includes paroles, reprieves, commutations, and transfer to other confinement prior to expiration of sentence. "Other Releases" includes deaths, and sentences modified or overturned by the courts. Clemencies and maxouts may or may not be followed by periods of probation.



A. Clemency with probation to follow	...	...	...	level	at	427
B. Clemency only	falls by	8	from	71	to	63
C. Maxout with probation to follow	falls by	51	from	571	to	520
D. Maxout only (unsupervised)	RISES BY	4	from	53	to	57
E. Other releases	falls by	8	from	35	to	27
F. Total releases (A+B+C+D+E)	falls by	63	from	1157	to	1094
<b>G. Total clemencies (A+B) (top line)</b>	<b>falls by</b>	<b>8</b>	<b>from</b>	<b>498</b>	<b>to</b>	<b>490</b>
<b>H. Total maxouts (C+D) (bottom line)</b>	<b>falls by</b>	<b>47</b>	<b>from</b>	<b>624</b>	<b>to</b>	<b>577</b>
I. % of releases by clemency (G/F)	RISES BY	1.75%	from	43.04%	to	44.79%
J. % of releases by maxout (H/F)	falls by	1.19%	from	53.93%	to	52.74%
K. Supervised releases (A+B+C)	falls by	59	from	1069	to	1010
L. % unsupervised releases (D/F)	RISES BY	.63%	from	4.58%	to	5.21%
M. % supervised releases (K/F)	falls by	.07%	from	92.39%	to	92.32%

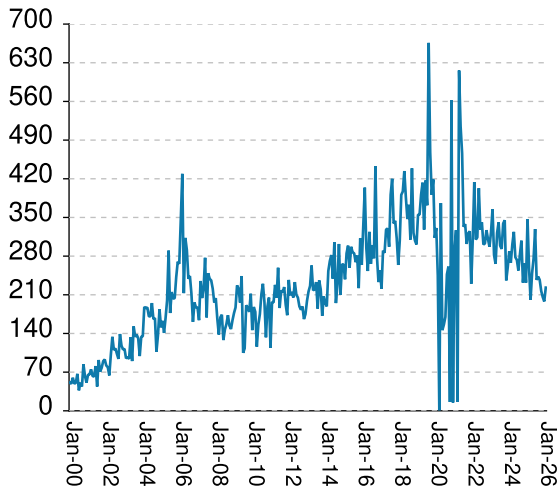
## Monthly releases from prison by type of release, for the past 48 months

	A	B	C	D	E	F	G	H	I	J
<b>Month</b>	<b>Clemency + Prob</b>	<b>Clemency Only</b>	<b>Maxout + Prob</b>	<b>Maxout Only</b>	<b>Other rels</b>	<b>Total Releases (A+B+C+D+E)</b>	<b>Total Clemency (A+B)</b>	<b>Total Maxout (C+D)</b>	<b>Percent Clemency (G/F)</b>	<b>Percent Maxout (H/F)</b>
Mar-22	460	73	515	56	16	1120	533	571	47.59%	50.98%
Apr-22	454	74	469	72	16	1085	528	541	48.66%	49.86%
May-22	439	79	539	64	26	1147	518	603	45.16%	52.57%
Jun-22	455	65	527	57	21	1125	520	584	46.22%	51.91%
Jul-22	439	71	529	60	14	1113	510	589	45.82%	52.92%
Aug-22	424	66	617	67	21	1195	490	684	41.00%	57.24%
Sep-22	398	77	548	60	18	1101	475	608	43.14%	55.22%
Oct-22	374	61	604	61	23	1123	435	665	38.74%	59.22%
Nov-22	367	53	522	56	19	1017	420	578	41.30%	56.83%
Dec-22	342	60	549	60	28	1039	402	609	38.69%	58.61%
Jan-23	375	51	526	59	23	1034	426	585	41.20%	56.58%
Feb-23	388	46	491	54	17	996	434	545	43.57%	54.72%
Mar-23	377	55	574	62	24	1092	432	636	39.56%	58.24%
Apr-23	391	56	574	53	26	1100	447	627	40.64%	57.00%
May-23	326	48	929	132	20	1455	374	1061	25.70%	72.92%
Jun-23	460	73	567	59	19	1178	533	626	45.25%	53.14%
Jul-23	459	74	510	49	25	1117	533	559	47.72%	50.04%
Aug-23	401	53	589	54	22	1119	454	643	40.57%	57.46%
Sep-23	402	56	576	44	10	1088	458	620	42.10%	56.99%
Oct-23	363	51	578	51	31	1074	414	629	38.55%	58.57%
Nov-23	354	57	491	67	19	988	411	558	41.60%	56.48%
Dec-23	366	46	554	57	21	1044	412	611	39.46%	58.52%
Jan-24	367	62	598	63	32	1122	429	661	38.24%	58.91%
Feb-24	396	51	578	59	24	1108	447	637	40.34%	57.49%
Mar-24	380	63	585	65	20	1113	443	650	39.80%	58.40%
Apr-24	411	46	531	53	33	1074	457	584	42.55%	54.38%
May-24	426	56	607	75	26	1190	482	682	40.50%	57.31%
Jun-24	412	61	576	60	23	1132	473	636	41.78%	56.18%
Jul-24	398	62	628	67	38	1193	460	695	38.56%	58.26%
Aug-24	381	67	639	59	19	1165	448	698	38.45%	59.91%
Sep-24	379	65	561	64	34	1103	444	625	40.25%	56.66%
Oct-24	399	59	633	53	28	1172	458	686	39.08%	58.53%
Nov-24	387	55	592	54	23	1111	442	646	39.78%	58.15%
Dec-24	392	57	555	49	33	1086	449	604	41.34%	55.62%
Jan-25	416	61	560	49	30	1116	477	609	42.74%	54.57%
Feb-25	399	57	547	59	17	1079	456	606	42.26%	56.16%
Mar-25	432	55	593	53	23	1156	487	646	42.13%	55.88%
Apr-25	409	62	555	46	18	1090	471	601	43.21%	55.14%
May-25	425	44	550	55	26	1100	469	605	42.64%	55.00%
Jun-25	433	61	579	36	36	1145	494	615	43.14%	53.71%
Jul-25	491	60	620	62	33	1266	551	682	43.52%	53.87%
Aug-25	431	72	602	58	16	1179	503	660	42.66%	55.98%
Sep-25	405	58	575	42	26	1106	463	617	41.86%	55.79%
Oct-25	518	87	592	51	26	1274	605	643	47.49%	50.47%
Nov-25	406	53	581	41	22	1103	459	622	41.61%	56.39%
Dec-25	443	59	520	58	28	1108	502	578	45.31%	52.17%
Jan-26	427	71	571	53	35	1157	498	624	43.04%	53.93%
Feb-26	427	63	520	57	27	1094	490	577	44.79%	52.74%

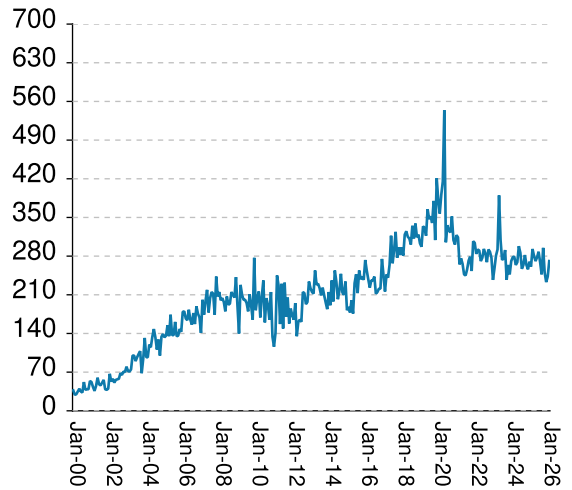
# Inmates with meth crimes, by month, Jan-2000 to Feb-2026

Methamphetamine is one of the most addictive drugs ever known. At first it induces intense euphoria, but with continued use causes severe depression and physical deterioration, including the dental catastrophe known as "meth mouth". Georgia's meth epidemic began in the early 2000s and has seen continued growth over the last 2 decades, with continued expansion beyond the originally predominate use by northern county white males.

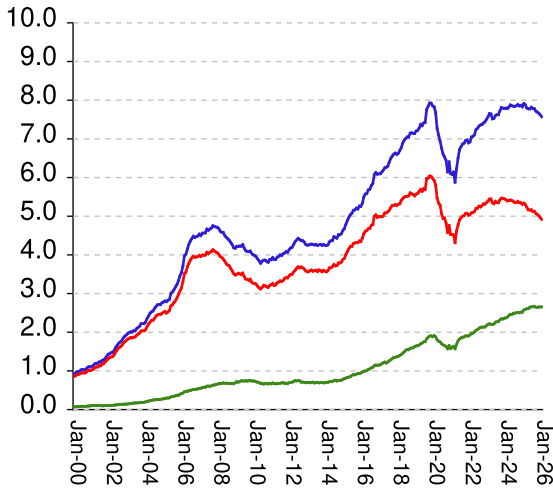
### Admissions



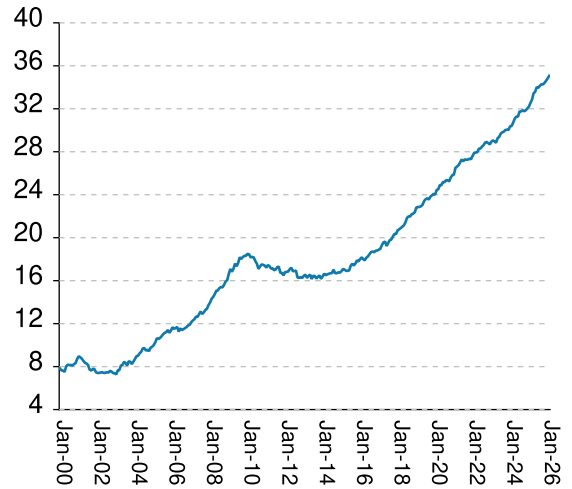
### Releases



### Population x1000



### Percent Non-White

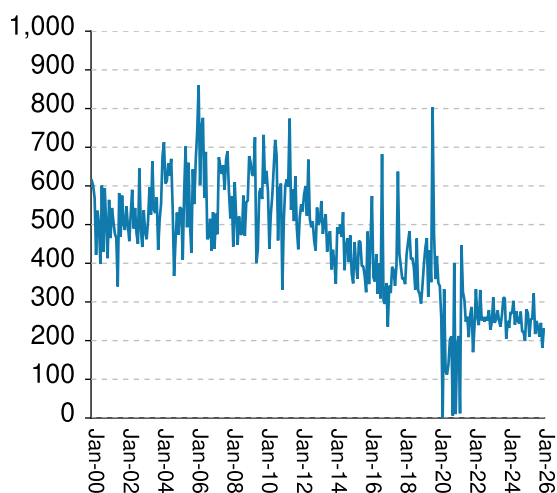


Methamphetamine admissions	RISES BY	25	from	198	to	223
Methamphetamine releases	RISES BY	28	from	243	to	271
<b>Methamphetamine population</b>	<b>falls by</b>	<b>48</b>	<b>from</b>	<b>7618</b>	<b>to</b>	<b>7570</b>
<b>Meth white population</b>	<b>falls by</b>	<b>49</b>	<b>from</b>	<b>4965</b>	<b>to</b>	<b>4916</b>
<b>Meth non-white population</b>	<b>RISES BY</b>	<b>1</b>	<b>from</b>	<b>2653</b>	<b>to</b>	<b>2654</b>
Percent meth inmates who are non-white	RISES BY	.23%	from	34.83%	to	35.06%

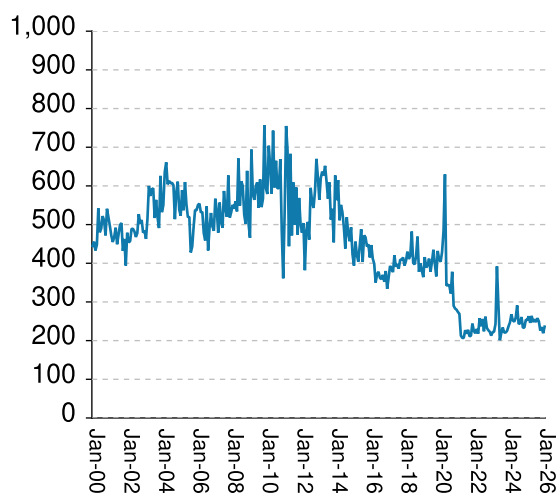
# Non-violent first-incarcerants, by month, Jan-2000 to Feb-2026

Historically, about one in six Georgia prison inmates has been a first-time incarcerant with a non-violent crime. In 2012 Georgia passed HB1176, which aimed to curb the growth of prison population by steering the least dangerous, least hardened offenders away from prison through pre-trial intervention, diversion, drug courts and treatment programs, and raising the dollar thresholds that define property felonies. The expectation is that over time, these measures will reduce the percentage of first-time non-violent incarcerants in prison.

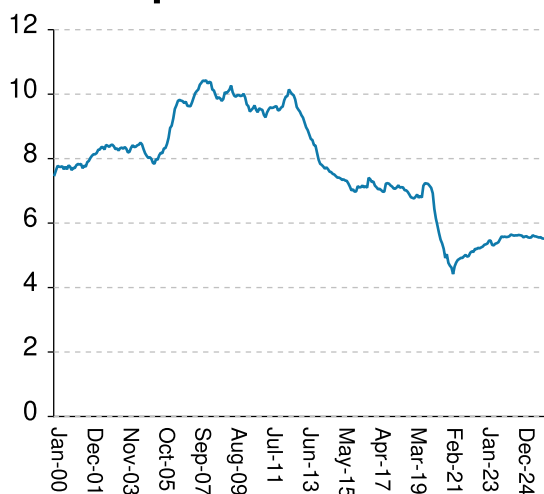
### Admissions



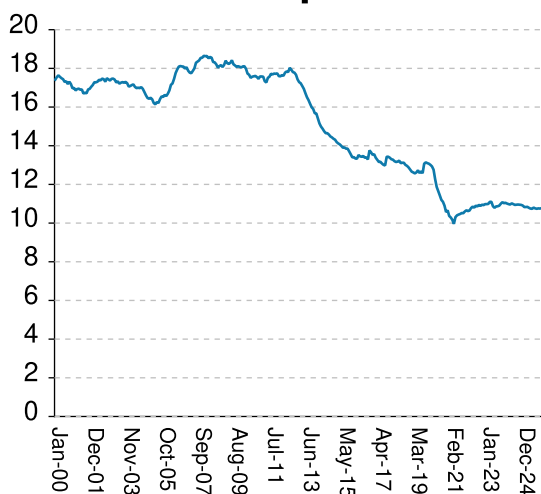
### Releases



### Population x1000



### % Total Population

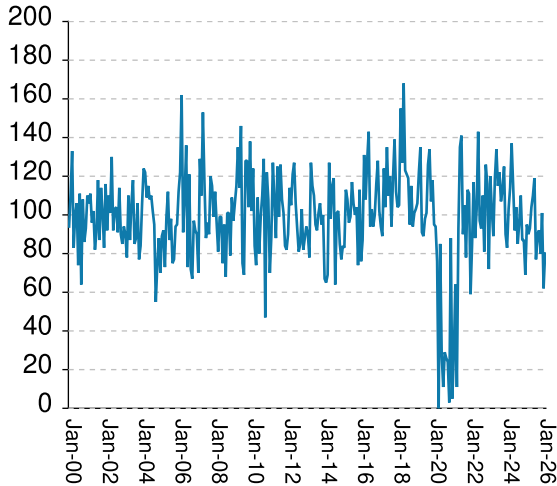


Non-viol/1st-Incar admissions	RISES BY	48	from	181	to	229
Non-viol/1st-Incar releases	RISES BY	17	from	219	to	236
Non-viol/1st-Incar population	falls by	7	from	5525	to	5518
Non-viol/1st-Incar % of total population	RISES BY	.01%	from	10.75%	to	10.76%

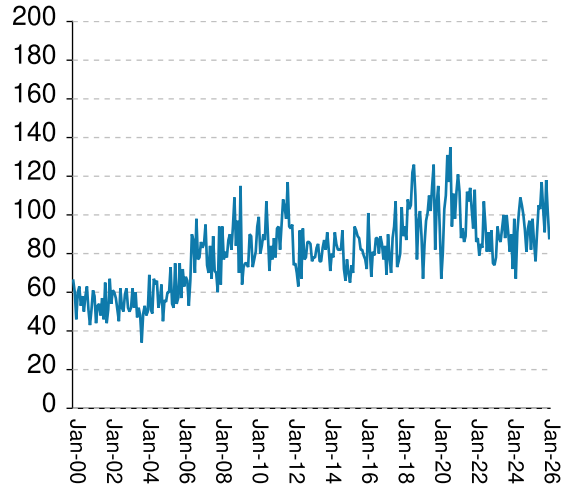
## 'Seven Deadly Sin', by month, Jan-2000 to Feb-2026

Tough legislation in 1995 imposed mandatory ten-year minimum terms for kidnapping, armed robbery, rape, aggravated sodomy, aggravated sexual battery, and aggravated child molestation, and a minimum of 25 years for murder. A second conviction resulted in life without parole. As predicted, longer prison terms caused population to climb steeply for about a decade. It then began to level off, as releases started catching up with admissions. The 2008 dip in percentage of total population (bottom right) was caused by the surge of methamphetamine convictions (Page MO-03). Note: these graphs include inmates convicted before 1995.

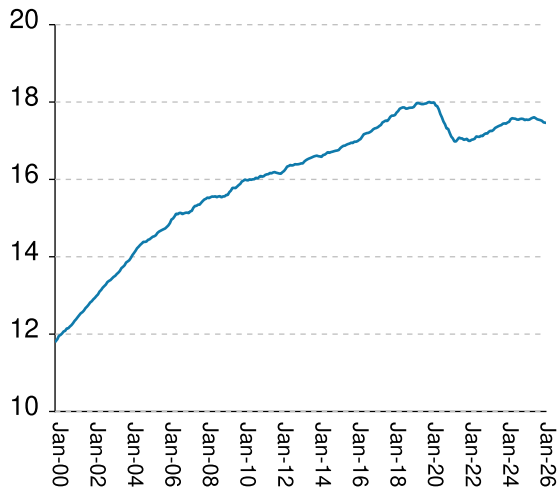
### Admissions



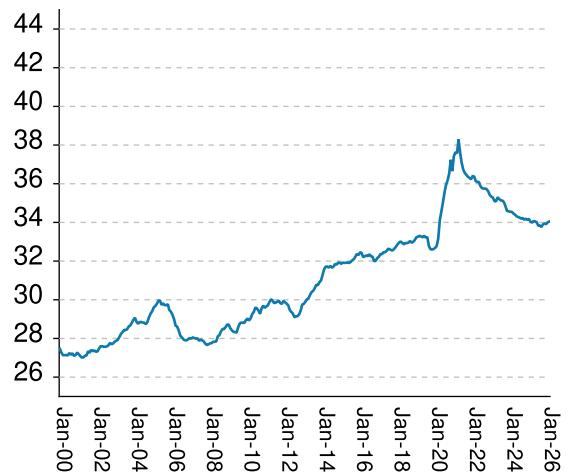
### Releases



### Population x1000



### % Total Population



"Seven Deadly Sin" admissions	RISES BY	18	from	62	to	80
"Seven Deadly Sin" releases	falls by	14	from	102	to	88
"Seven Deadly Sin" population	falls by	8	from	17475	to	17467
"Seven Deadly Sin" % of total population	RISES BY	.03%	from	34.01%	to	34.04%

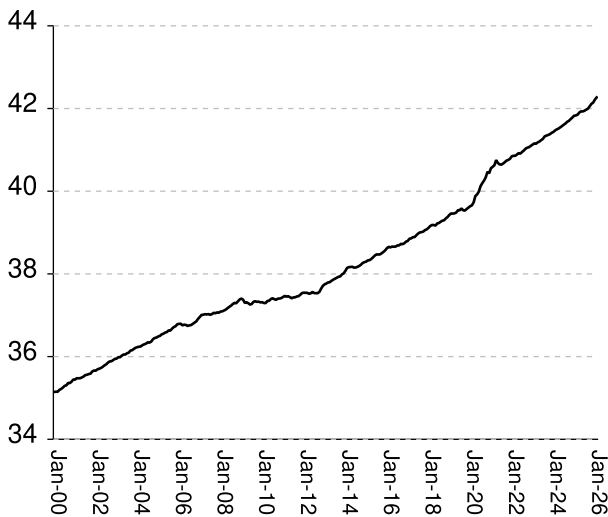
## Inmate subpopulation counts and percentages, for the past 48 months

Month	Methamphetamine						1st Incar Non-Violent		Seven Deadly Sins	
	Total Number	Total Percent	White Number	White Percent	Non White Number	Non White Percent	Number	Percent	Number	Percent
Mar-22	7047	14.96%	5086	72.17%	1968	27.93%	5080	10.78%	17025	36.13%
Apr-22	7067	14.97%	5098	72.14%	1976	27.96%	5122	10.85%	17034	36.10%
May-22	7110	15.05%	5123	72.05%	2011	28.28%	5104	10.80%	17052	36.09%
Jun-22	7236	15.17%	5197	71.82%	2048	28.30%	5198	10.90%	17112	35.88%
Jul-22	7271	15.21%	5207	71.61%	2071	28.48%	5194	10.86%	17102	35.77%
Aug-22	7327	15.32%	5260	71.79%	2096	28.61%	5231	10.94%	17100	35.75%
Sep-22	7359	15.36%	5241	71.22%	2124	28.86%	5218	10.89%	17129	35.75%
Oct-22	7370	15.38%	5270	71.51%	2131	28.91%	5246	10.95%	17119	35.72%
Nov-22	7409	15.37%	5318	71.78%	2134	28.80%	5271	10.93%	17164	35.60%
Dec-22	7443	15.34%	5314	71.40%	2135	28.68%	5327	10.98%	17188	35.42%
Jan-23	7503	15.42%	5352	71.33%	2171	28.94%	5342	10.98%	17185	35.33%
Feb-23	7568	15.49%	5389	71.21%	2199	29.06%	5367	10.99%	17231	35.28%
Mar-23	7652	15.57%	5441	71.11%	2217	28.97%	5456	11.10%	17255	35.10%
Apr-23	7642	15.54%	5444	71.24%	2204	28.84%	5459	11.10%	17250	35.09%
May-23	7518	15.36%	5349	71.15%	2200	29.26%	5322	10.87%	17281	35.30%
Jun-23	7531	15.30%	5324	70.69%	2213	29.39%	5309	10.79%	17329	35.21%
Jul-23	7599	15.39%	5384	70.85%	2256	29.69%	5360	10.86%	17351	35.14%
Aug-23	7622	15.41%	5355	70.26%	2272	29.81%	5376	10.87%	17373	35.13%
Sep-23	7624	15.36%	5350	70.17%	2278	29.88%	5407	10.90%	17392	35.05%
Oct-23	7726	15.47%	5420	70.15%	2320	30.03%	5497	11.00%	17405	34.84%
Nov-23	7807	15.48%	5465	70.00%	2346	30.05%	5586	11.08%	17439	34.59%
Dec-23	7796	15.45%	5457	70.00%	2343	30.05%	5566	11.03%	17448	34.58%
Jan-24	7785	15.42%	5448	69.98%	2364	30.37%	5580	11.05%	17441	34.55%
Feb-24	7796	15.42%	5428	69.63%	2371	30.41%	5566	11.01%	17472	34.55%
Mar-24	7785	15.35%	5396	69.31%	2392	30.73%	5572	10.98%	17488	34.47%
Apr-24	7822	15.33%	5404	69.09%	2433	31.10%	5590	10.96%	17558	34.41%
May-24	7877	15.38%	5417	68.77%	2463	31.27%	5644	11.02%	17582	34.33%
Jun-24	7857	15.33%	5404	68.78%	2456	31.26%	5626	10.98%	17573	34.28%
Jul-24	7844	15.29%	5380	68.59%	2490	31.74%	5611	10.94%	17568	34.25%
Aug-24	7841	15.28%	5353	68.27%	2490	31.76%	5619	10.95%	17548	34.20%
Sep-24	7860	15.34%	5357	68.16%	2504	31.86%	5618	10.96%	17544	34.23%
Oct-24	7886	15.33%	5381	68.23%	2505	31.77%	5632	10.95%	17562	34.14%
Nov-24	7854	15.28%	5352	68.14%	2502	31.86%	5623	10.94%	17568	34.19%
Dec-24	7865	15.29%	5346	67.97%	2519	32.03%	5611	10.91%	17562	34.14%
Jan-25	7827	15.26%	5307	67.80%	2520	32.20%	5556	10.83%	17534	34.18%
Feb-25	7913	15.35%	5337	67.45%	2576	32.55%	5584	10.83%	17547	34.04%
Mar-25	7879	15.27%	5302	67.29%	2588	32.85%	5592	10.84%	17539	33.99%
Apr-25	7800	15.15%	5227	67.01%	2608	33.44%	5556	10.79%	17546	34.07%
May-25	7778	15.07%	5166	66.42%	2612	33.58%	5547	10.75%	17574	34.05%
Jun-25	7776	15.03%	5160	66.36%	2645	34.01%	5556	10.74%	17593	34.01%
Jul-25	7817	15.02%	5163	66.05%	2654	33.95%	5623	10.80%	17607	33.83%
Aug-25	7785	14.98%	5127	65.86%	2658	34.14%	5592	10.76%	17581	33.84%
Sep-25	7781	14.96%	5124	65.85%	2667	34.28%	5585	10.74%	17554	33.76%
Oct-25	7723	14.92%	5076	65.73%	2647	34.27%	5568	10.76%	17543	33.90%
Nov-25	7690	14.89%	5047	65.63%	2646	34.41%	5552	10.75%	17532	33.94%
Dec-25	7663	14.83%	5012	65.41%	2652	34.61%	5563	10.77%	17515	33.91%
Jan-26	7618	14.83%	4965	65.17%	2653	34.83%	5525	10.75%	17475	34.01%
Feb-26	7570	14.75%	4916	64.94%	2654	35.06%	5518	10.76%	17467	34.04%

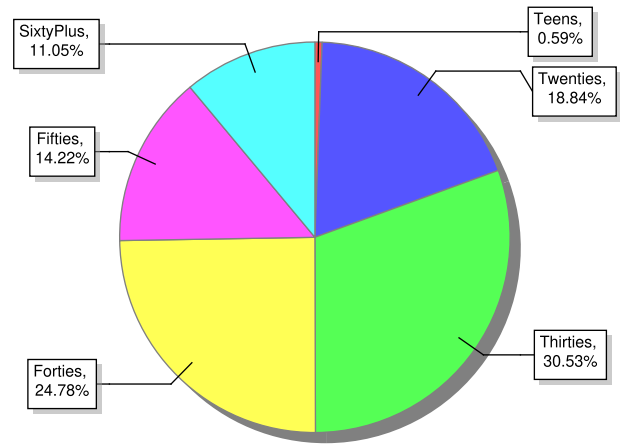
# Overview of inmate age statistics, Jan-2000 to Feb-2026

The "aging inmate population" is a concern in correctional systems throughout America, including Georgia. Here, the increase in inmate age is the result of several factors. Teenagers have been steered away from prison by increased usage of probation and other alternatives, at least for their first convictions. And there has been a surge of middle-aged male sex offenders due to the expanding "It's OK to tell" ethos. But most importantly, more severe sentence lengths and release policies have greatly increased the length of time that most offenders -- especially violent ones -- spend in prison, thereby increasing their average age.

### Average age since 2000



### Current Age



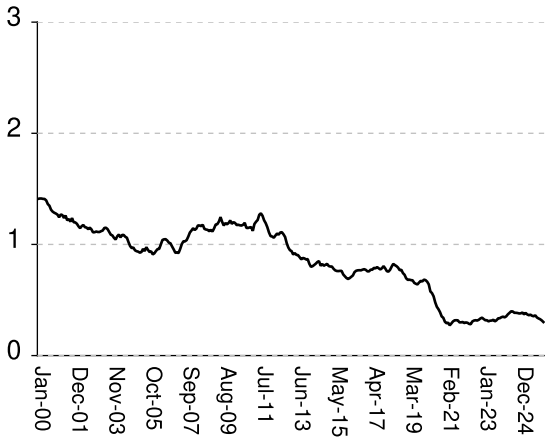
Feb-2026

Average age of active inmates	RISES BY	.05	from	42.22	to	42.27
Number in their teens	falls by	14	from	316	to	302
Percentage in their teens	falls by	.03%	from	.62%	to	.59%
Number in their twenties	falls by	39	from	9,706	to	9,667
Percentage in their twenties	falls by	.05%	from	18.89%	to	18.84%
Number in their thirties	falls by	42	from	15,703	to	15,661
Percentage in their thirties	falls by	.04%	from	30.56%	to	30.52%
Number in their forties	falls by	34	from	12,745	to	12,711
Percentage in their forties	falls by	.04%	from	24.81%	to	24.77%
Number in their fifties	RISES BY	33	from	7,262	to	7,295
Percentage in their fifties	RISES BY	.09%	from	14.13%	to	14.22%
Number age sixty and up	RISES BY	25	from	5,643	to	5,668
Percentage age sixty and up	RISES BY	.07%	from	10.98%	to	11.05%

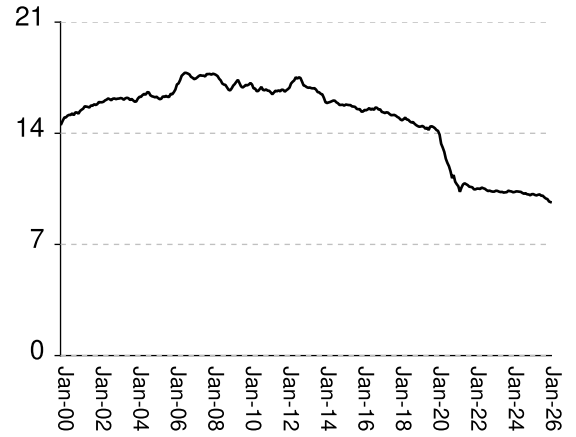
# Monthly counts of inmates by age group, Jan-2000 to Feb-2026

Y-axis of Twenties/Thirties/Forties/Fifties runs from 0 to 21,000. Y-axis of Teens/Sixty+ runs from 0 to 3,000.

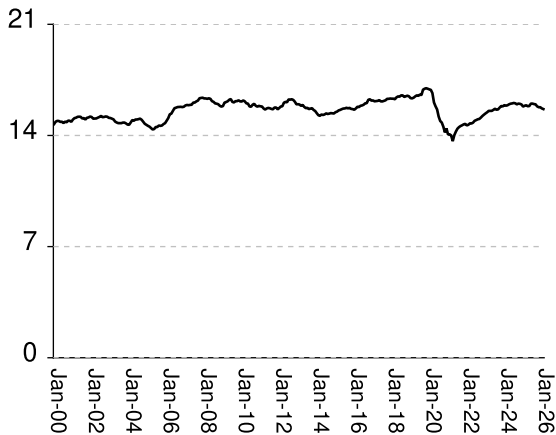
### Teens x 1000



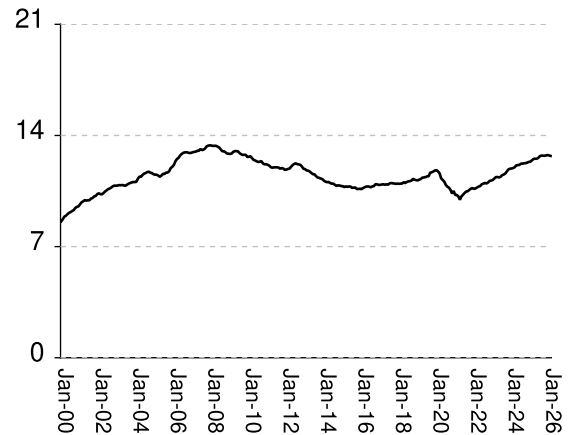
### Twenties x 1000



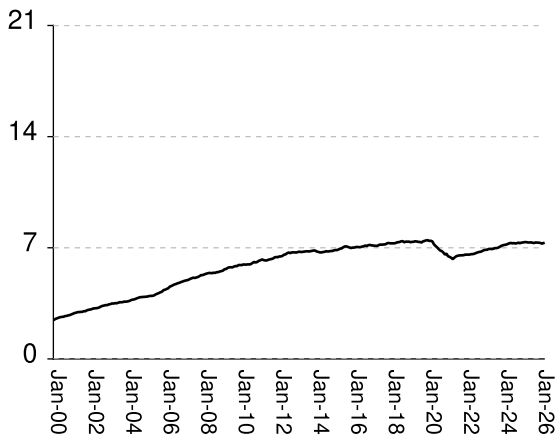
### Thirties x 1000



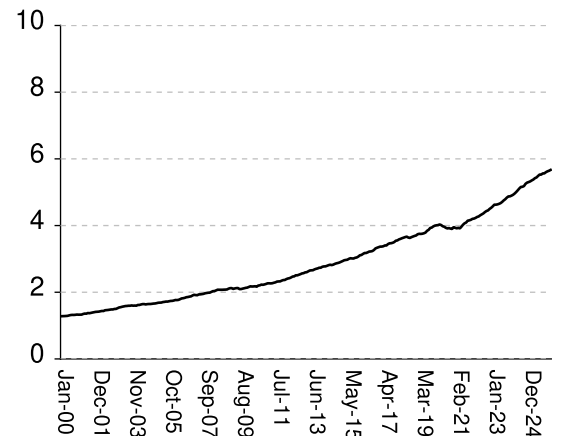
### Forties x 1000



### Fifties x 1000



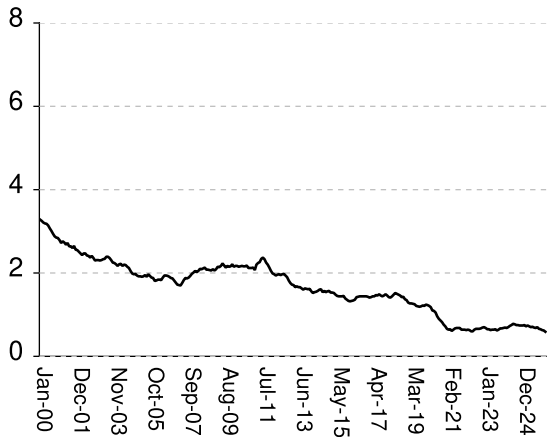
### Sixty & Up x 1000



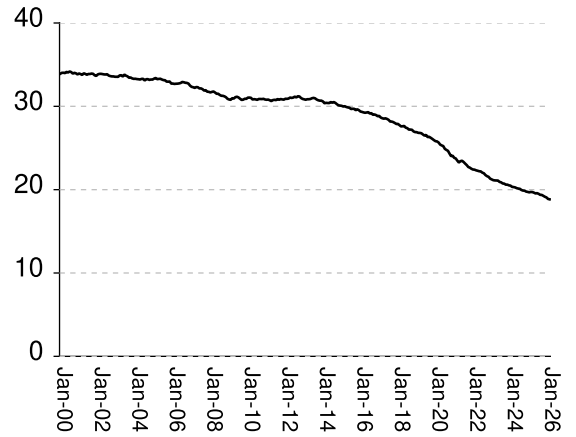
# Monthly percentages of inmates by age group, Jan-2000 to Feb-2026

Y-axis of Twenties/Thirties/Forties/Fifties runs from 0% to 40%. Y-axis of Teens/Sixty+ runs from 0% to 8%

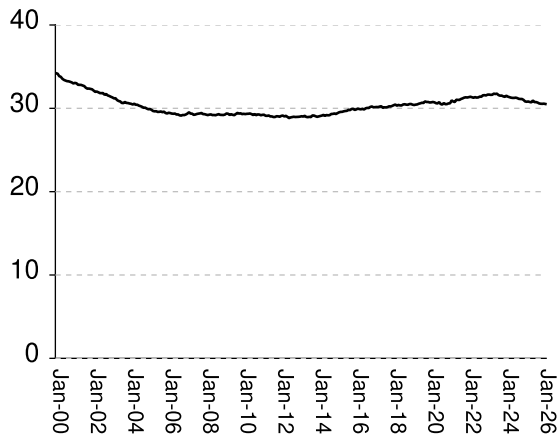
### Teens (%)



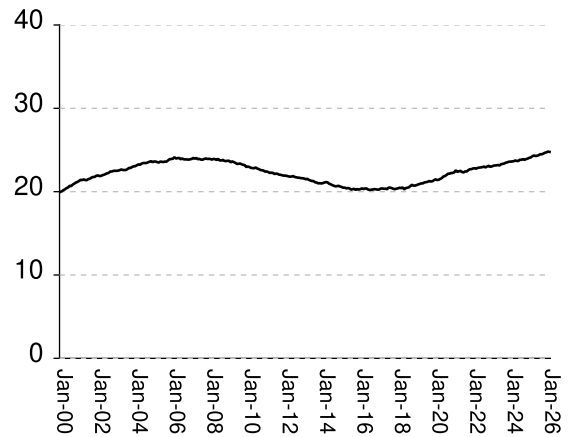
### Twenties (%)



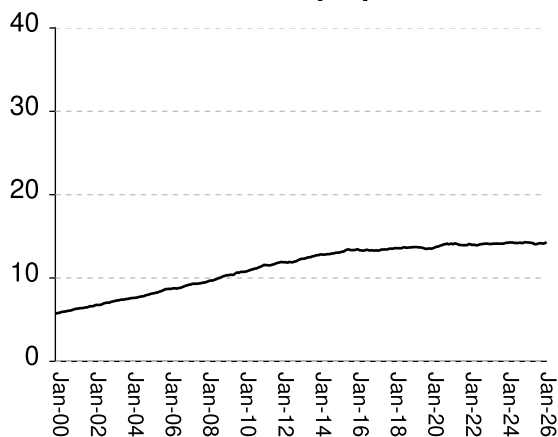
### Thirties (%)



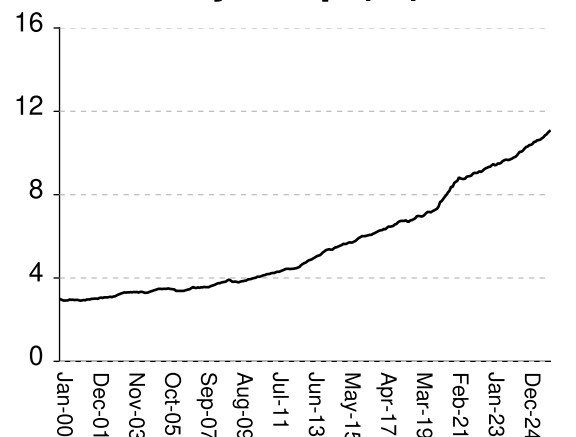
### Forties (%)



### Fifties (%)



### Sixty & Up (%)

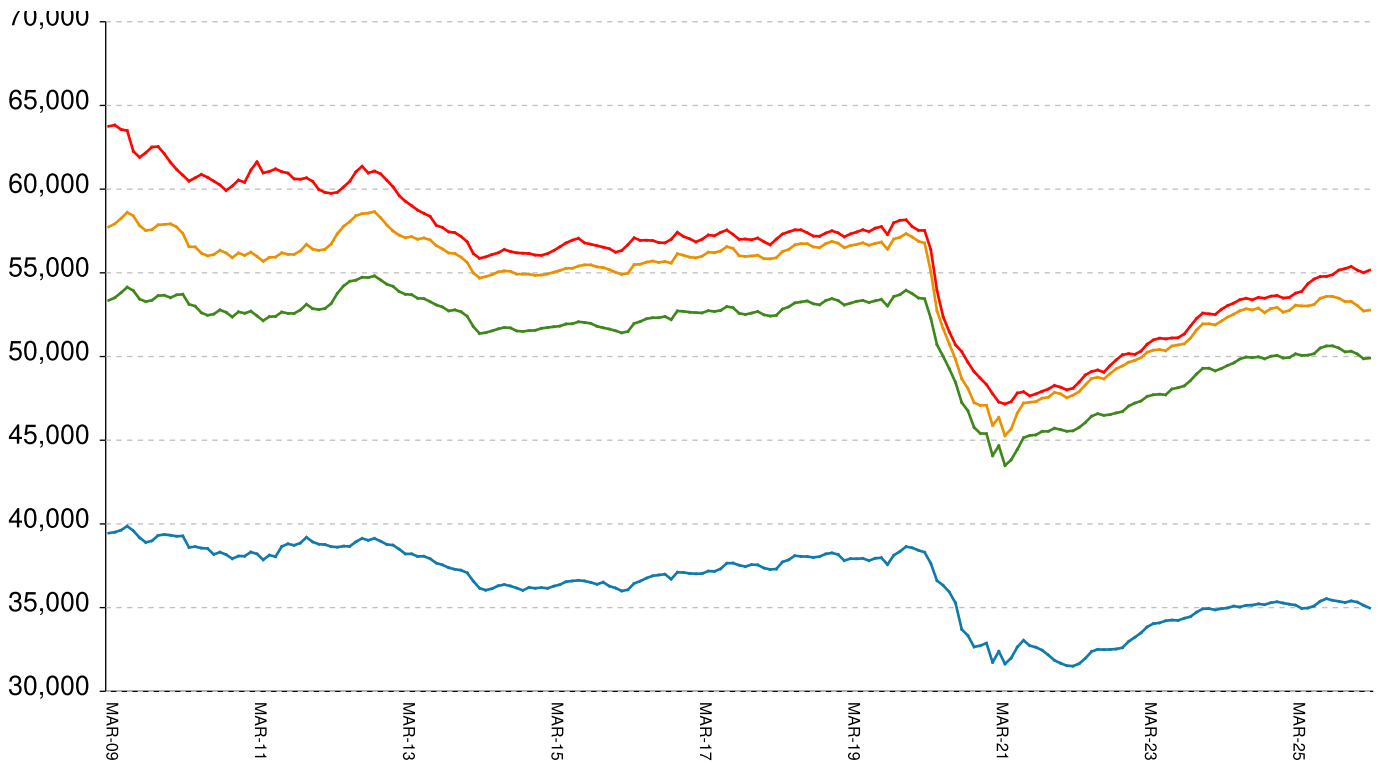


## Inmate counts & percentages by age, for past 48 months

Month	Avg Age	Teens		Twenties		Thirties		Forties		Fifties		Sixty & Up	
		Number	Per cent	Number	Per cent	Number	Per cent	Number	Per cent	Number	Per cent	Number	Per cent
Mar-22	40.86	295	0.63%	10518	22.32%	14763	31.33%	10726	22.76%	6577	13.96%	4258	9.04%
Apr-22	40.89	285	0.60%	10511	22.27%	14756	31.27%	10782	22.85%	6600	13.99%	4273	9.05%
May-22	40.92	282	0.60%	10495	22.21%	14807	31.34%	10815	22.89%	6602	13.97%	4308	9.12%
Jun-22	40.91	307	0.64%	10581	22.19%	14923	31.29%	10926	22.91%	6633	13.91%	4335	9.09%
Jul-22	40.95	315	0.66%	10536	22.04%	14967	31.31%	10967	22.94%	6675	13.96%	4363	9.13%
Aug-22	40.98	318	0.66%	10504	21.96%	15018	31.40%	11008	23.01%	6711	14.03%	4404	9.21%
Sep-22	41.03	315	0.66%	10422	21.75%	15040	31.39%	10979	22.91%	6739	14.06%	4436	9.26%
Oct-22	41.05	322	0.67%	10364	21.62%	15126	31.56%	11033	23.02%	6754	14.09%	4454	9.29%
Nov-22	41.07	334	0.69%	10387	21.54%	15227	31.58%	11135	23.10%	6801	14.11%	4499	9.33%
Dec-22	41.1	341	0.70%	10347	21.32%	15311	31.55%	11157	22.99%	6853	14.12%	4532	9.34%
Jan-23	41.13	329	0.68%	10325	21.23%	15391	31.64%	11196	23.02%	6872	14.13%	4575	9.41%
Feb-23	41.16	318	0.65%	10327	21.14%	15459	31.65%	11288	23.11%	6876	14.08%	4626	9.47%
Mar-23	41.15	318	0.65%	10380	21.11%	15547	31.62%	11376	23.14%	6926	14.09%	4626	9.41%
Apr-23	41.18	308	0.63%	10371	21.10%	15548	31.63%	11384	23.16%	6929	14.09%	4634	9.43%
May-23	41.2	314	0.64%	10326	21.09%	15548	31.76%	11359	23.20%	6920	14.14%	4650	9.50%
Jun-23	41.24	315	0.64%	10299	20.93%	15612	31.72%	11390	23.14%	6939	14.10%	4672	9.49%
Jul-23	41.27	322	0.65%	10308	20.88%	15683	31.76%	11502	23.30%	6979	14.14%	4707	9.53%
Aug-23	41.33	308	0.62%	10264	20.75%	15623	31.59%	11537	23.33%	6980	14.11%	4753	9.61%
Sep-23	41.34	318	0.64%	10280	20.72%	15640	31.52%	11601	23.38%	7005	14.12%	4789	9.65%
Oct-23	41.36	335	0.67%	10292	20.60%	15752	31.53%	11728	23.48%	7054	14.12%	4837	9.68%
Nov-23	41.38	336	0.67%	10386	20.60%	15853	31.44%	11858	23.52%	7120	14.12%	4873	9.67%
Dec-23	41.41	345	0.68%	10352	20.52%	15832	31.38%	11904	23.60%	7151	14.17%	4876	9.66%
Jan-24	41.43	350	0.69%	10336	20.48%	15907	31.51%	11916	23.60%	7182	14.23%	4897	9.70%
Feb-24	41.47	344	0.68%	10287	20.34%	15878	31.40%	11946	23.63%	7194	14.23%	4922	9.73%
Mar-24	41.49	353	0.70%	10301	20.31%	15900	31.34%	11994	23.64%	7232	14.26%	4959	9.78%
Apr-24	41.52	371	0.73%	10340	20.27%	15960	31.28%	12111	23.74%	7274	14.26%	5005	9.81%
May-24	41.55	384	0.75%	10335	20.18%	16001	31.25%	12133	23.69%	7306	14.27%	5056	9.87%
Jun-24	41.57	398	0.78%	10321	20.13%	16017	31.25%	12141	23.68%	7281	14.20%	5111	9.97%
Jul-24	41.61	397	0.77%	10309	20.10%	16045	31.28%	12220	23.83%	7293	14.22%	5158	10.06%
Aug-24	41.64	385	0.75%	10240	19.96%	16025	31.23%	12225	23.83%	7275	14.18%	5162	10.06%
Sep-24	41.68	385	0.75%	10194	19.89%	15959	31.14%	12248	23.90%	7286	14.22%	5185	10.12%
Oct-24	41.7	383	0.74%	10224	19.88%	16006	31.12%	12254	23.82%	7322	14.23%	5252	10.21%
Nov-24	41.75	379	0.74%	10158	19.77%	15992	31.12%	12287	23.91%	7288	14.18%	5288	10.29%
Dec-24	41.78	380	0.74%	10148	19.73%	15951	31.01%	12331	23.97%	7325	14.24%	5305	10.31%
Jan-25	41.83	387	0.75%	10095	19.68%	15817	30.83%	12345	24.06%	7335	14.30%	5325	10.38%
Feb-25	41.83	371	0.72%	10166	19.72%	15871	30.79%	12426	24.11%	7357	14.27%	5354	10.39%
Mar-25	41.85	384	0.74%	10167	19.71%	15900	30.82%	12511	24.25%	7359	14.26%	5380	10.43%
Apr-25	41.9	370	0.72%	10116	19.64%	15841	30.76%	12537	24.34%	7337	14.25%	5421	10.53%
May-25	41.93	363	0.70%	10088	19.55%	15854	30.72%	12532	24.28%	7331	14.20%	5442	10.54%
Jun-25	41.93	368	0.71%	10127	19.58%	16005	30.94%	12574	24.31%	7343	14.20%	5488	10.61%
Jul-25	41.95	358	0.69%	10151	19.50%	16006	30.75%	12682	24.37%	7318	14.06%	5529	10.62%
Aug-25	41.97	354	0.68%	10068	19.38%	15977	30.75%	12729	24.50%	7301	14.05%	5529	10.64%
Sep-25	42	362	0.70%	10070	19.37%	15960	30.69%	12729	24.48%	7333	14.10%	5562	10.70%
Oct-25	42.06	343	0.66%	9969	19.26%	15832	30.59%	12718	24.57%	7328	14.16%	5565	10.75%
Nov-25	42.11	334	0.65%	9891	19.15%	15778	30.55%	12741	24.67%	7322	14.18%	5600	10.84%
Dec-25	42.14	327	0.63%	9853	19.07%	15777	30.54%	12768	24.72%	7305	14.14%	5626	10.89%
Jan-26	42.22	316	0.62%	9706	18.89%	15703	30.56%	12745	24.81%	7262	14.13%	5643	10.98%
Feb-26	42.27	302	0.59%	9667	18.84%	15661	30.52%	12711	24.77%	7295	14.22%	5668	11.05%

# All housed offenders under GDC jurisdiction

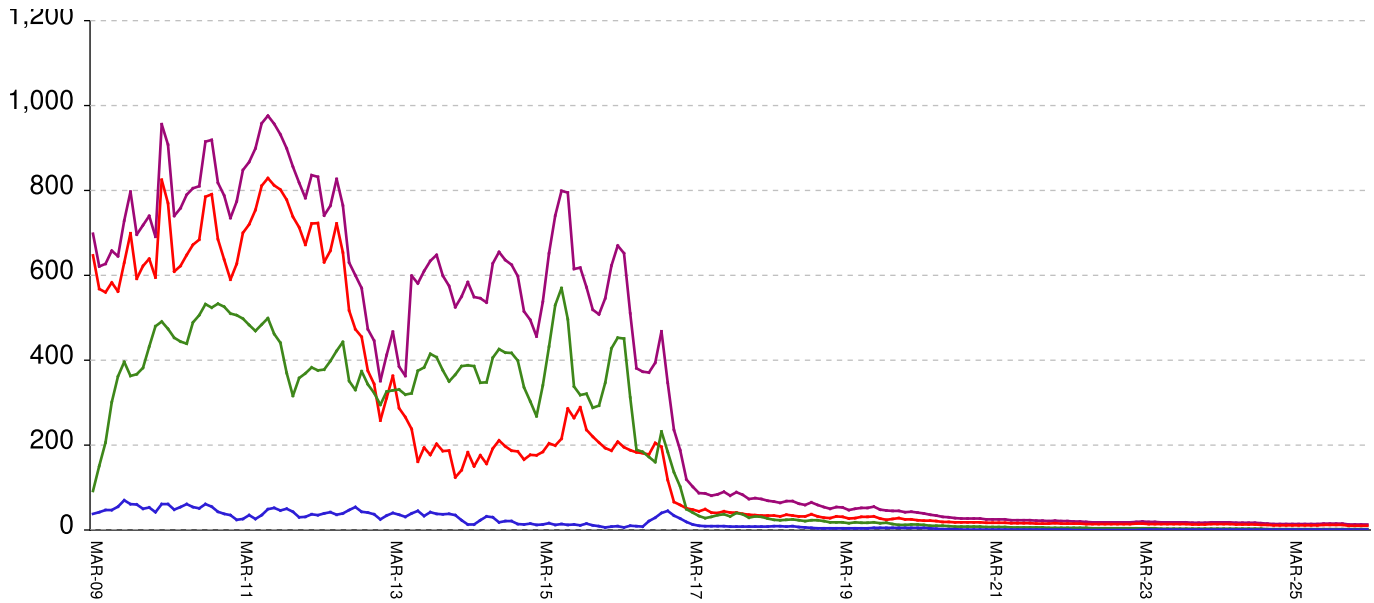
March 20, 2009 through March 27, 2026



<b>All in bed + probs in jail + backlog</b>	<b>RISES BY</b>	<b>66</b>	<b>from</b>	<b>55,174</b>	<b>to</b>	<b>55,240</b>
Probationers in jail	...	...	...	13	at	13
Inmate jail backlog	falls by	58	from	2,430	to	2,372
<b>All in beds: inmate + Prob + parole</b>	<b>RISES BY</b>	<b>124</b>	<b>from</b>	<b>52,731</b>	<b>to</b>	<b>52,855</b>
Total probationers in beds	falls by	16	from	2,874	to	2,858
Probation detention centers	falls by	12	from	1,406	to	1,394
Probation boot camps	falls by	...	from		to	
Probation RSAT	falls by	4	from	1,468	to	1,464
Parole revocation centers	falls by	...	from		to	
<b>All in inmate beds: state + other</b>	<b>RISES BY</b>	<b>140</b>	<b>from</b>	<b>49,857</b>	<b>to</b>	<b>49,997</b>
Other inmate facilities:	RISES BY	113	from	14,977	to	15,090
Inmate boot camps	...	...	...	1	at	1
Private prisons	RISES BY	44	from	8,072	to	8,116
County prisons	RISES BY	66	from	4,146	to	4,212
Transitional centers	RISES BY	3	from	2,758	to	2,761
<b>In state prisons only</b>	<b>RISES BY</b>	<b>27</b>	<b>from</b>	<b>34,880</b>	<b>to</b>	<b>34,907</b>

# Probationers in jail awaiting placement in facilities

March 20, 2009 through March 27, 2026



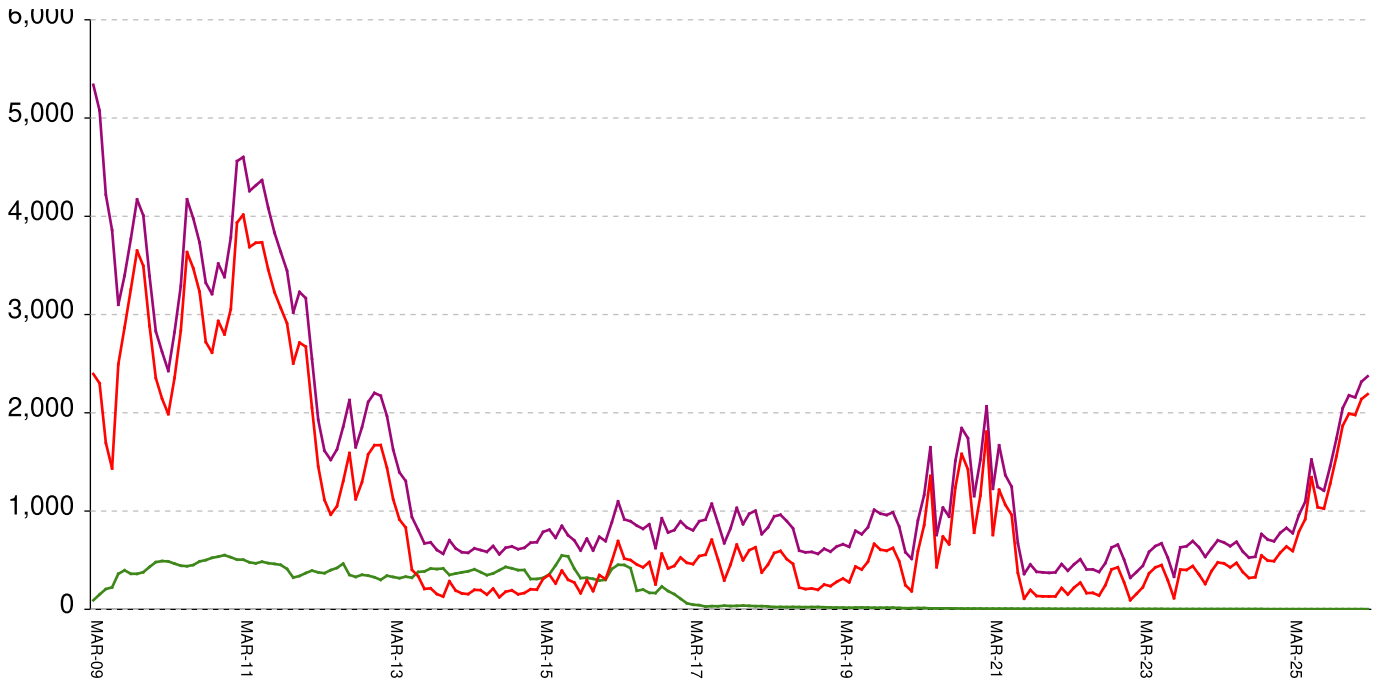
This graph shows, for each Friday since March 20 2009, the number of sentenced felony probationers who were waiting in jail for placement in facilities that GDC operates for housing probationers -- detention centers, probation residential substance abuse treatment (RSAT) centers, and probation boot camps. Counts include both those offenders sentenced directly from court, and those whose street probation was revoked.

<b>Total probationers waiting in jail</b>	...	...	...	<b>level</b>	<b>at</b>	<b>13</b>
<b>...waiting for detention centers</b>	...	...	...	<b>level</b>	<b>at</b>	<b>10</b>
<b>...waiting for probation RSAT</b>	...	...	...	<b>level</b>	<b>at</b>	<b>2</b>
<b>...waiting for probation boot camps</b>	...	...	...	<b>level</b>	<b>at</b>	<b>1</b>

The highest number of probationers waiting in jail was	994	on	05-MAR-10
...highest number waiting for detention centers was	859	on	05-MAR-10
...highest number waiting for probation RSAT was	592	on	10-JUL-15
...highest number waiting for probation boot camps was	70	on	18-SEP-09

# State inmates in jail awaiting placement in facilities

March 20, 2009 through March 27, 2026



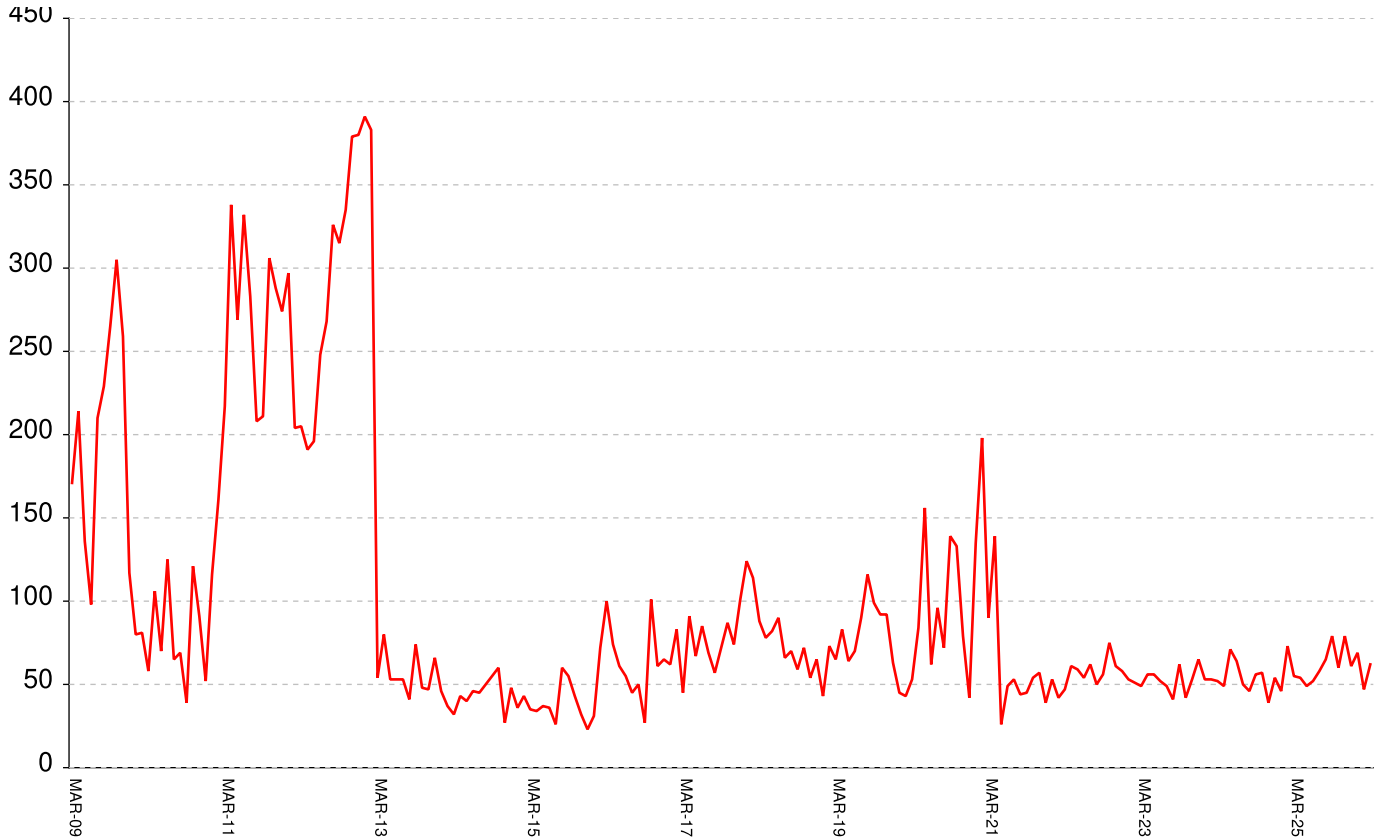
This graph shows, for each Friday since March 2009, the number of prisoners, probationers, and parolees in local jails who have been sentenced or revoked to state prison and whose documents have been received and verified by GDC. Most are almost immediately assigned to a diagnostic center, and are designated as in "admission processing". Of those a few hundred may be in the "transportation delayed" category because there is no room in the assigned diagnostic center, or because the inmate is being held for medical reasons, or for other court proceedings, or other reasons. Those remaining are "ready to be picked up".

<b>Total state inmates waiting in jail</b>	<b>falls by</b>	<b>58</b>	<b>from</b>	<b>2430</b>	<b>to</b>	<b>2372</b>
... not yet assigned to a diagnostic center	...	...	...	level	at	10
... total "in admission processing"	falls by	58	from	2420	to	2362
<b>... with "transportation delayed"</b>	<b>falls by</b>	<b>1</b>	<b>from</b>	<b>173</b>	<b>to</b>	<b>172</b>
<b>... ready to be picked up</b>	<b>falls by</b>	<b>57</b>	<b>from</b>	<b>2247</b>	<b>to</b>	<b>2190</b>

The highest number of state inmates waiting in jail was 5338 on 27-MAR-09  
 ... highest number not asg to a diagnostic center was 2881 on 12-JUN-09  
 ... highest number in admission processing was 4916 on 25-MAR-11  
 ... highest number with transportation delayed was 645 on 14-JAN-11  
 ... highest number ready to be pickup was 4435 on 25-MAR-11

# Female state inmates in jail awaiting pickup

March 20, 2009 through March 27, 2026



This graph shows, for each Friday since March 2009, the number of female state prisoners in local jails who were assigned to diagnostic centers but had not yet been picked up.

**Female state inmates in jails waiting picked up RISES BY 13 from 49 to 62**

The highest number of female inmates waiting in jail was 424 on 01-FEB-13

The lowest number of female inmates waiting in jail was 17 on 20-MAR-20

## Summary of housed prisoners, parolees, and probationers

Week Ending	Prison	Parole	Probation			Prison+parole +probation	Jail		Total
	Total inmates	Revocation centers	Prob RSAT	Boot camp	Detention		Inmate backlog	Probationers	Prison+parole +probation+jail
04-Apr-2025	50155		1483		1488	53126	772	14	53912
11-Apr-2025	50044		1473		1496	53013	804	14	53831
18-Apr-2025	50040		1449		1489	52978	895	14	53887
25-Apr-2025	50035		1454		1486	52975	962	14	53951
02-May-2025	50070		1461		1501	53032	1094	14	54140
09-May-2025	49969		1446		1504	52919	1192	14	54125
16-May-2025	50043		1435		1473	52951	1355	14	54320
23-May-2025	50107		1428		1501	53036	1453	14	54503
30-May-2025	50224		1437		1509	53170	1477	14	54661
06-Jun-2025	50133		1455		1482	53070	1520	14	54604
13-Jun-2025	50139		1440		1487	53066	1524	14	54604
20-Jun-2025	50045		1425		1525	52995	1543	14	54552
27-Jun-2025	50363		1438		1512	53313	1425	14	54752
04-Jul-2025	50404		1450		1516	53370	1394	14	54778
11-Jul-2025	50529		1433		1531	53493	1191	14	54698
18-Jul-2025	50525		1462		1492	53479	1246	14	54739
25-Jul-2025	50570		1485		1514	53569	1318	14	54901
01-Aug-2025	50604		1492		1499	53595	1266	14	54875
08-Aug-2025	50586		1483		1482	53551	1112	14	54677
15-Aug-2025	50624		1487		1483	53594	1113	14	54721
22-Aug-2025	50654		1478		1463	53595	1204	15	54814
29-Aug-2025	50683		1491		1461	53635	1208	15	54858
05-Sep-2025	50623		1491		1458	53572	1164	15	54751
12-Sep-2025	50671		1504		1474	53649	1168	15	54832
19-Sep-2025	50604		1479		1477	53560	1350	15	54925
26-Sep-2025	50642		1490		1446	53578	1456	15	55049
03-Oct-2025	50592		1496		1426	53514	1545	15	55074
10-Oct-2025	50542		1502		1438	53482	1568	15	55065
17-Oct-2025	50565		1526		1461	53552	1619	15	55186
24-Oct-2025	50468		1540		1470	53478	1738	15	55231
31-Oct-2025	50381		1483		1513	53377	1861	15	55253
07-Nov-2025	50231		1503		1493	53227	1898	15	55140
14-Nov-2025	50276		1516		1485	53277	1907	15	55199
21-Nov-2025	50343		1512		1498	53353	1956	15	55324
28-Nov-2025	50271		1495		1515	53281	2047	15	55343
05-Dec-2025	50325		1472		1501	53298	1989	14	55301
12-Dec-2025	50317		1481		1499	53297	2063	13	55373
19-Dec-2025	50326		1503		1474	53303	2078	13	55394
26-Dec-2025	50291		1493		1474	53258	2177	13	55448
02-Jan-2026	50238		1475		1427	53140	2171	13	55324
09-Jan-2026	50250		1479		1429	53158	1965	13	55136
16-Jan-2026	50195		1483		1436	53114	2042	13	55169
23-Jan-2026	50092		1469		1430	52991	2157	13	55161
30-Jan-2026	49980		1465		1364	52809	2182	13	55004
06-Feb-2026	49874		1475		1390	52739	2212	13	54964
13-Feb-2026	49848		1464		1399	52711	2277	13	55001
20-Feb-2026	49860		1455		1374	52689	2304	13	55006
27-Feb-2026	49899		1447		1403	52749	2316	13	55078
06-Mar-2026	49854		1448		1412	52714	2364	13	55091
13-Mar-2026	49912		1458		1410	52780	2360	13	55153
20-Mar-2026	49857		1468		1406	52731	2430	13	55174
27-Mar-2026	49997		1464		1394	52855	2372	13	55240

## Offenders housed in facilities for state prisoners

Week ending	In facilities other than state prisons							Total Inmates
	In state prisons	Transition centers	County prisons	Pre-rel centers	Private prisons	Inmate boot camps	Total others	
04-Apr-2025	35047	2599	4524		7984	1	15108	50155
11-Apr-2025	34951	2596	4501		7995	1	15093	50044
18-Apr-2025	34906	2591	4515		8027	1	15134	50040
25-Apr-2025	34904	2590	4522		8018	1	15131	50035
02-May-2025	34954	2567	4511		8037	1	15116	50070
09-May-2025	34900	2544	4495		8029	1	15069	49969
16-May-2025	34954	2554	4502		8032	1	15089	50043
23-May-2025	35001	2577	4501		8028	0	15106	50107
30-May-2025	35065	2605	4511		8043	0	15159	50224
06-Jun-2025	35068	2587	4440		8038	0	15065	50133
13-Jun-2025	35092	2599	4416		8032	0	15047	50139
20-Jun-2025	35027	2590	4442		7986	0	15018	50045
27-Jun-2025	35203	2645	4483		8032	0	15160	50363
04-Jul-2025	35284	2652	4430		8038	0	15120	50404
11-Jul-2025	35380	2669	4436		8044	0	15149	50529
18-Jul-2025	35399	2690	4400		8036	0	15126	50525
25-Jul-2025	35464	2698	4363		8045	0	15106	50570
01-Aug-2025	35516	2709	4347		8032	0	15088	50604
08-Aug-2025	35507	2698	4347		8034	0	15079	50586
15-Aug-2025	35522	2714	4349		8039	0	15102	50624
22-Aug-2025	35539	2726	4348		8041	0	15115	50654
29-Aug-2025	35576	2714	4352		8041	0	15107	50683
05-Sep-2025	35478	2721	4352		8072	0	15145	50623
12-Sep-2025	35437	2739	4396		8099	0	15234	50671
19-Sep-2025	35399	2749	4378		8078	0	15205	50604
26-Sep-2025	35420	2732	4384		8106	0	15222	50642
03-Oct-2025	35389	2727	4371		8105	0	15203	50592
10-Oct-2025	35390	2705	4350		8097	0	15152	50542
17-Oct-2025	35402	2716	4337		8110	0	15163	50565
24-Oct-2025	35359	2744	4297		8068	0	15109	50468
31-Oct-2025	35328	2751	4237		8065	0	15053	50381
07-Nov-2025	35288	2748	4167		8028	0	14943	50231
14-Nov-2025	35293	2750	4193		8040	0	14983	50276
21-Nov-2025	35342	2756	4211		8034	0	15001	50343
28-Nov-2025	35305	2745	4168		8053	0	14966	50271
05-Dec-2025	35396	2746	4134		8049	0	14929	50325
12-Dec-2025	35370	2759	4130		8058	0	14947	50317
19-Dec-2025	35414	2755	4107		8049	1	14912	50326
26-Dec-2025	35409	2737	4082		8062	1	14882	50291
02-Jan-2026	35371	2745	4056		8065	1	14867	50238
09-Jan-2026	35363	2780	4032		8074	1	14887	50250
16-Jan-2026	35354	2745	3988		8107	1	14841	50195
23-Jan-2026	35302	2731	3960		8098	1	14790	50092
30-Jan-2026	35249	2730	3926		8074	1	14731	49980
06-Feb-2026	35179	2729	3891		8074	1	14695	49874
13-Feb-2026	35121	2721	3906		8099	1	14727	49848
20-Feb-2026	35112	2747	3898		8102	1	14748	49860
27-Feb-2026	35132	2750	3907		8109	1	14767	49899
06-Mar-2026	35106	2739	3932		8076	1	14748	49854
13-Mar-2026	35010	2751	4084		8066	1	14902	49912
20-Mar-2026	34880	2758	4146		8072	1	14977	49857
27-Mar-2026	34907	2761	4212		8116	1	15090	49997

## Offenders waiting in local jails for state facilities

Week ending	Probationers waiting in jail				Probationers waiting in jail					Assigned females
	.. for PDCs	.. for RSAT	.. for boot camps	Total	Total backlog	Not yet assigned	In adm process	Delayed transport	Ready for pickup	
04-Apr-2025	11	2	1	14	772	9	763	171	592	42
11-Apr-2025	11	2	1	14	804	9	795	169	626	63
18-Apr-2025	11	2	1	14	895	10	885	168	717	50
25-Apr-2025	11	2	1	14	962	9	953	162	791	54
02-May-2025	11	2	1	14	1094	9	1085	168	917	49
09-May-2025	11	2	1	14	1192	9	1183	171	1012	58
16-May-2025	11	2	1	14	1355	8	1347	178	1169	62
23-May-2025	11	2	1	14	1453	8	1445	181	1264	69
30-May-2025	11	2	1	14	1477	9	1468	184	1284	58
06-Jun-2025	11	2	1	14	1520	8	1512	176	1336	65
13-Jun-2025	11	2	1	14	1524	8	1516	172	1344	52
20-Jun-2025	11	2	1	14	1543	9	1534	179	1355	46
27-Jun-2025	11	2	1	14	1425	9	1416	179	1237	35
04-Jul-2025	11	2	1	14	1394	9	1385	202	1183	53
11-Jul-2025	11	2	1	14	1191	9	1182	201	981	50
18-Jul-2025	11	2	1	14	1246	9	1237	198	1039	58
25-Jul-2025	11	2	1	14	1318	9	1309	203	1106	70
01-Aug-2025	11	2	1	14	1266	9	1257	192	1065	59
08-Aug-2025	11	2	1	14	1112	11	1101	177	924	40
15-Aug-2025	11	2	1	14	1113	10	1103	174	929	51
22-Aug-2025	12	2	1	15	1204	10	1194	171	1023	60
29-Aug-2025	12	2	1	15	1208	8	1200	175	1025	65
05-Sep-2025	12	2	1	15	1164	8	1156	177	979	63
12-Sep-2025	12	2	1	15	1168	8	1160	178	982	68
19-Sep-2025	12	2	1	15	1350	8	1342	176	1166	61
26-Sep-2025	12	2	1	15	1456	9	1447	169	1278	79
03-Oct-2025	12	2	1	15	1545	8	1537	169	1368	75
10-Oct-2025	12	2	1	15	1568	8	1560	171	1389	66
17-Oct-2025	12	2	1	15	1619	9	1610	171	1439	73
24-Oct-2025	12	2	1	15	1738	8	1730	172	1558	60
31-Oct-2025	12	2	1	15	1861	10	1851	167	1684	53
07-Nov-2025	12	2	1	15	1898	11	1887	168	1719	58
14-Nov-2025	12	2	1	15	1907	12	1895	169	1726	67
21-Nov-2025	12	2	1	15	1956	11	1945	175	1770	86
28-Nov-2025	12	2	1	15	2047	11	2036	168	1868	79
05-Dec-2025	11	2	1	14	1989	10	1979	171	1808	72
12-Dec-2025	10	2	1	13	2063	11	2052	172	1880	79
19-Dec-2025	10	2	1	13	2078	11	2067	172	1895	53
26-Dec-2025	10	2	1	13	2177	11	2166	175	1991	61
02-Jan-2026	10	2	1	13	2171	11	2160	172	1988	45
09-Jan-2026	10	2	1	13	1965	10	1955	175	1780	34
16-Jan-2026	10	2	1	13	2042	9	2033	175	1858	59
23-Jan-2026	10	2	1	13	2157	9	2148	170	1978	69
30-Jan-2026	10	2	1	13	2182	9	2173	168	2005	52
06-Feb-2026	10	2	1	13	2212	9	2203	164	2039	61
13-Feb-2026	10	2	1	13	2277	9	2268	164	2104	71
20-Feb-2026	10	2	1	13	2304	9	2295	167	2128	64
27-Feb-2026	10	2	1	13	2316	9	2307	168	2139	47
06-Mar-2026	10	2	1	13	2364	9	2355	172	2183	66
13-Mar-2026	10	2	1	13	2360	10	2350	174	2176	76
20-Mar-2026	10	2	1	13	2430	10	2420	173	2247	49
27-Mar-2026	10	2	1	13	2372	10	2362	172	2190	62