

Friday Report - overview and contents

The pages in The Friday Report are about adult offenders in Georgia's prisons and jails. They contain statistical snapshots and trends in the populations and movements of offenders in the state prison system, on probation, on parole, and in local jails. Information comes from databases of the Georgia Department of Corrections (GDC) and the Board of Pardons and Paroles, and from data provided by local jailers. Information is summarized into tables in the GDC/Parole Data Warehouse, and is extracted into these pages each Friday. Pages are organized according to the table that supplied the data.

<p>The Monthly Research Table, named "MO_RESRCH" or simply "MO", contains data about state prisoners, grouped into statistically interesting categories. The table contains one record per month, from January 2000 to the present. Despite its being "monthly", it is updated weekly, because some data trickles in for several weeks before it becomes stable history.</p>	
Page	Content
MO-01	Clemencies and maxouts. Monthly graph from 2000 to present shows the monthly departures from prison via actions by the Georgia Parole Board (clemencies), and via service of 100% of the court ordered sentence (maxouts)
MO-02	48 months of releases. Table shows counts and percentages of releases via clemencies and maxouts, with and without probation to follow, for each of the past 48 months.
MO-03	Methamphetamine. Monthly graph from 2000 to present shows admissions, departures, population, and percent of population of inmates with a current offense of methamphetamine possession, sale, manufacturing, or trafficking, and the changing racial composition of the methamphetamine population
MO-04	Non-violent first incarcerants. Monthly graph from 2000 to present shows admissions, departures, population, and percent of population of inmates without violent or sex crimes, who are serving their first Georgia felony incarceration.
MO-05	Seven Deadly Sins. Monthly graph from 2000 to present shows admissions, departures, population, and percent of population of inmates convicted of kidnapping, armed robbery, rape, aggravated sodomy, aggravated sexual battery, and aggravated child molestation, for whom especially severe penalties are prescribed.
MO-06	48 months of inmate subpopulations. Table shows number and percentage of white and non-white inmates with methamphetamine offenses, and non-violent first incarcerants, and inmates convicted of the Seven Deadly Sins.
MO-07	Inmate age overview. Line graph shows the average age of the inmate population, by month from 2000 to the present. Pie chart shows the number of currently active inmates in their teens, twenties, thirties, forties, fifties, and age sixty+.
MO-08	Counts by age group. Graphs show the count, by month from 2000 to the present, of inmates in their teens, twenties, thirties, forties, fifties, and age sixty+.
MO-09	Percentages by age group. Graphs show the percentages, by month from 2000 to the present, of inmates in their teens, twenties, thirties, forties, fifties, and age sixty+.
MO-10	48 months of inmate ages. Table shows average age of the standing population, and counts and percentages of teens, twenties, thirties, forties, fifties, and sixty+, for each of the past 48 months.

Friday Report - overview and contents (continued)

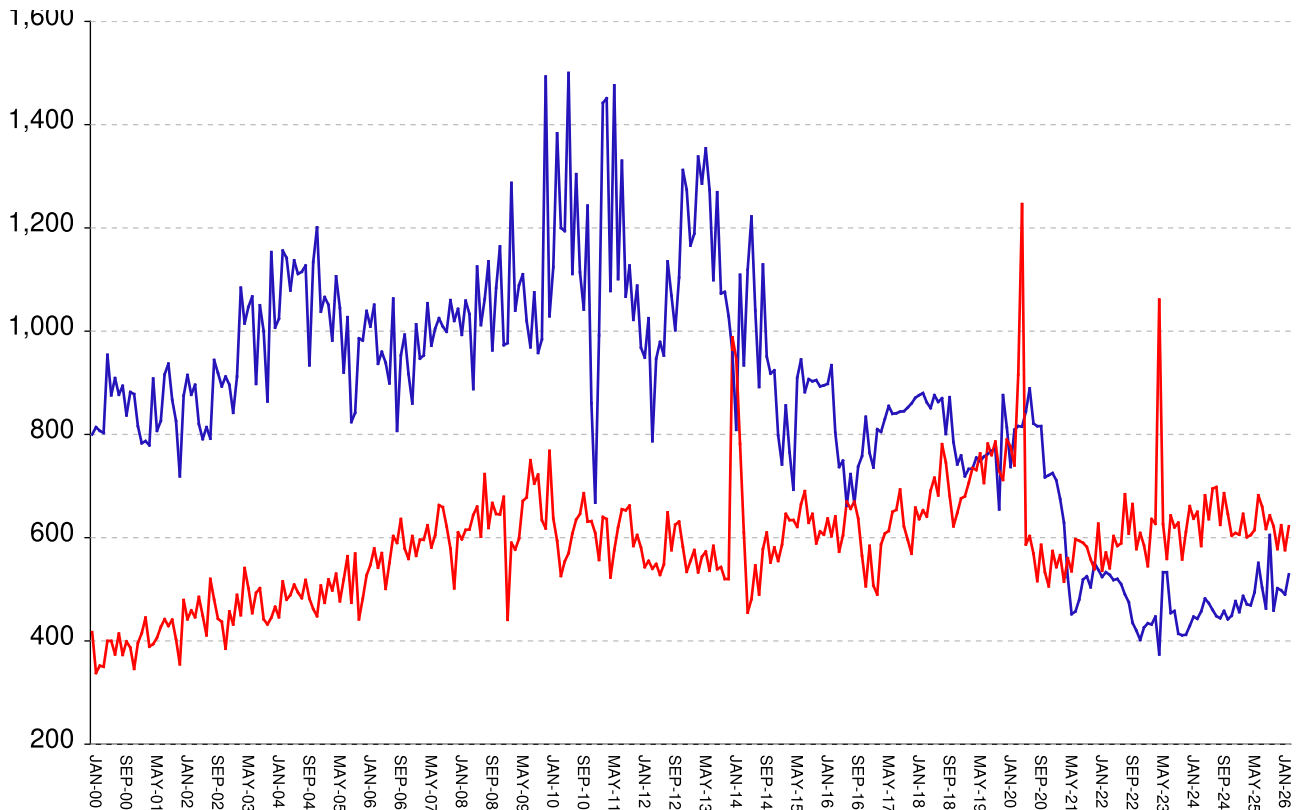
The MSR Table is based on the Management Summary Report (MSR), a snapshot report posted each week in GDC's Scribe database. MSR_RESRCH gathers that data into weekly trends, with one record for each Friday since March 20th, 2009

Page	Content
MSR-01	All housed offenders. Weekly graph from March 20, 2009 to present, showing counts of inmates in state prisons, transitional centers, county prisons, private prisons, inmate boot camps, parole revocation centers, probation Residential Substance Abuse Treatment (RSAT), probation boot camps, probation detention centers, plus the inmate jail backlog and probationers in jail waiting for state facilities.
MSR-02	Probationers in jail. Weekly graph from March 20, 2009 to present, showing counts of probationers in local jails awaiting placement in probation detention centers, probation RSAT centers, and probation boot camps.
MSR-03	State inmates in jail. Weekly graph from March 20, 2009 to present, showing counts of state inmates in local jails awaiting placement in state prison facilities – including those who have not yet been assigned to a diagnostic center, those whose transportation has been delayed for some reason, and those who are ready to be picked up.
MSR-04	Female state inmates in jail. Weekly graph from March 20, 2009 to present, showing counts of female state inmates awaiting placement in a state prison for females.
MSR-05	52-week table: housed offenders. Data for each of the past 52 weeks, showing total prison inmates, parolees in revocation centers, probationers in RSAT/boot camp/detention centers, inmate jail backlog, probationers in jail waiting for facilities, with subtotals.
MSR-06	52-week table: state prisoners. Data for each of the past 52 weeks, showing inmates in state prisons, transition centers, county prisons, pre-release centers, private prisons, and inmate boot camps, with subtotals.
MSR-07	52-week table: waiting in jail. Data for each of the past 52 weeks, showing probationers waiting for detention centers, RSAT, and boot camp; and state prisoners not yet assigned to diagnostic centers, in admission process, with delayed transport, and ready for pickup, with subtotals.

Releases by clemency and maxout, Jan-2000 to Mar-2026

There are two main ways of being released from a Georgia prison -- by actions of the Board of Pardons and Paroles ("Clemencies") and by service of 100% of the court-ordered sentences ("Maxouts").

"Clemency" includes paroles, reprieves, commutations, and transfer to other confinement prior to expiration of sentence. "Other Releases" includes deaths, and sentences modified or overturned by the courts. Clemencies and maxouts may or may not be followed by periods of probation.



A. Clemency with probation to follow	RISES BY	22	from	427	to	449
B. Clemency only	RISES BY	17	from	63	to	80
C. Maxout with probation to follow	RISES BY	49	from	520	to	569
D. Maxout only (unsupervised)	falls by	3	from	56	to	53
E. Other releases	RISES BY	1	from	27	to	28
F. Total releases (A+B+C+D+E)	RISES BY	86	from	1093	to	1179
G. Total clemencies (A+B) (top line)	RISES BY	39	from	490	to	529
H. Total maxouts (C+D) (bottom line)	RISES BY	46	from	576	to	622
I. % of releases by clemency (G/F)	RISES BY	.04%	from	44.83%	to	44.87%
J. % of releases by maxout (H/F)	RISES BY	.06%	from	52.7%	to	52.76%
K. Supervised releases (A+B+C)	RISES BY	88	from	1010	to	1098
L. % unsupervised releases (D/F)	falls by	.62%	from	5.12%	to	4.5%
M. % supervised releases (K/F)	RISES BY	.72%	from	92.41%	to	93.13%

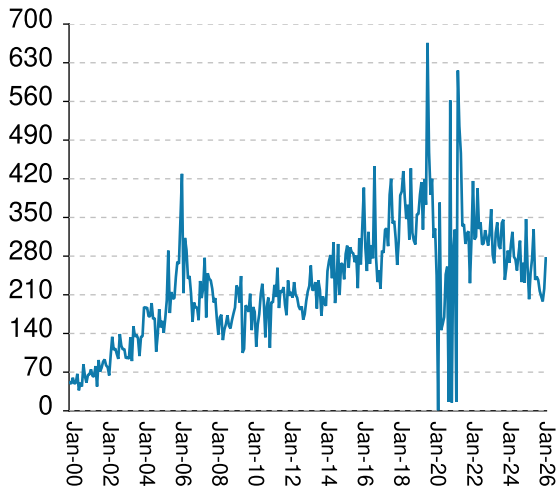
Monthly releases from prison by type of release, for the past 48 months

	A	B	C	D	E	F	G	H	I	J
Month	Clemency + Prob	Clemency Only	Maxout + Prob	Maxout Only	Other rels	Total Releases (A+B+C+D+E)	Total Clemency (A+B)	Total Maxout (C+D)	Percent Clemency (G/F)	Percent Maxout (H/F)
Apr-22	454	74	469	72	16	1085	528	541	48.66%	49.86%
May-22	439	79	539	64	26	1147	518	603	45.16%	52.57%
Jun-22	454	66	528	56	21	1125	520	584	46.22%	51.91%
Jul-22	439	71	529	60	14	1113	510	589	45.82%	52.92%
Aug-22	424	66	616	68	21	1195	490	684	41.00%	57.24%
Sep-22	397	78	548	60	18	1101	475	608	43.14%	55.22%
Oct-22	374	61	604	61	23	1123	435	665	38.74%	59.22%
Nov-22	367	53	521	57	19	1017	420	578	41.30%	56.83%
Dec-22	342	60	549	60	28	1039	402	609	38.69%	58.61%
Jan-23	375	51	525	60	23	1034	426	585	41.20%	56.58%
Feb-23	387	47	491	54	17	996	434	545	43.57%	54.72%
Mar-23	377	55	574	62	24	1092	432	636	39.56%	58.24%
Apr-23	392	55	574	53	26	1100	447	627	40.64%	57.00%
May-23	326	48	929	132	20	1455	374	1061	25.70%	72.92%
Jun-23	460	73	567	59	19	1178	533	626	45.25%	53.14%
Jul-23	459	74	510	49	25	1117	533	559	47.72%	50.04%
Aug-23	401	53	589	54	22	1119	454	643	40.57%	57.46%
Sep-23	402	56	576	44	10	1088	458	620	42.10%	56.99%
Oct-23	362	52	578	51	31	1074	414	629	38.55%	58.57%
Nov-23	353	58	490	68	19	988	411	558	41.60%	56.48%
Dec-23	366	46	554	57	21	1044	412	611	39.46%	58.52%
Jan-24	368	61	599	62	32	1122	429	661	38.24%	58.91%
Feb-24	396	51	577	60	24	1108	447	637	40.34%	57.49%
Mar-24	379	64	584	66	20	1113	443	650	39.80%	58.40%
Apr-24	409	48	531	53	33	1074	457	584	42.55%	54.38%
May-24	426	56	605	77	26	1190	482	682	40.50%	57.31%
Jun-24	412	61	576	60	23	1132	473	636	41.78%	56.18%
Jul-24	398	62	628	67	38	1193	460	695	38.56%	58.26%
Aug-24	381	67	640	58	19	1165	448	698	38.45%	59.91%
Sep-24	379	65	561	64	34	1103	444	625	40.25%	56.66%
Oct-24	399	59	633	53	28	1172	458	686	39.08%	58.53%
Nov-24	388	54	591	55	23	1111	442	646	39.78%	58.15%
Dec-24	392	57	555	49	33	1086	449	604	41.34%	55.62%
Jan-25	415	62	560	49	30	1116	477	609	42.74%	54.57%
Feb-25	400	56	548	58	17	1079	456	606	42.26%	56.16%
Mar-25	432	55	593	53	23	1156	487	646	42.13%	55.88%
Apr-25	409	62	556	45	18	1090	471	601	43.21%	55.14%
May-25	424	45	550	55	26	1100	469	605	42.64%	55.00%
Jun-25	433	61	579	36	36	1145	494	615	43.14%	53.71%
Jul-25	491	60	619	63	33	1266	551	682	43.52%	53.87%
Aug-25	431	72	602	58	16	1179	503	660	42.66%	55.98%
Sep-25	405	58	576	41	26	1106	463	617	41.86%	55.79%
Oct-25	518	87	592	51	26	1274	605	643	47.49%	50.47%
Nov-25	407	52	581	41	22	1103	459	622	41.61%	56.39%
Dec-25	443	59	520	58	28	1108	502	578	45.31%	52.17%
Jan-26	426	72	572	52	35	1157	498	624	43.04%	53.93%
Feb-26	427	63	520	56	27	1093	490	576	44.83%	52.70%
Mar-26	449	80	569	53	28	1179	529	622	44.87%	52.76%

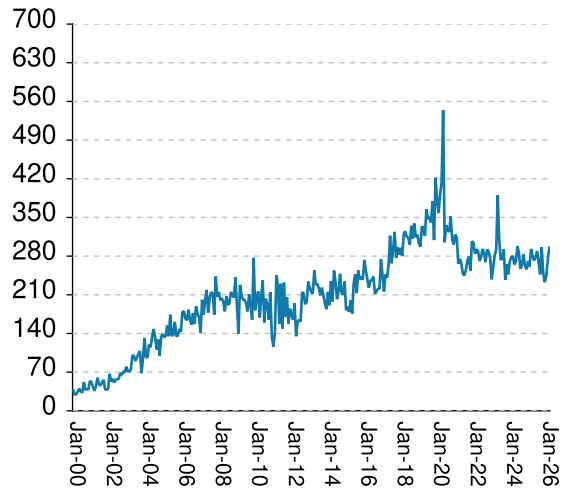
Inmates with meth crimes, by month, Jan-2000 to Mar-2026

Methamphetamine is one of the most addictive drugs ever known. At first it induces intense euphoria, but with continued use causes severe depression and physical deterioration, including the dental catastrophe known as "meth mouth". Georgia's meth epidemic began in the early 2000s and has seen continued growth over the last 2 decades, with continued expansion beyond the originally predominate use by northern county white males.

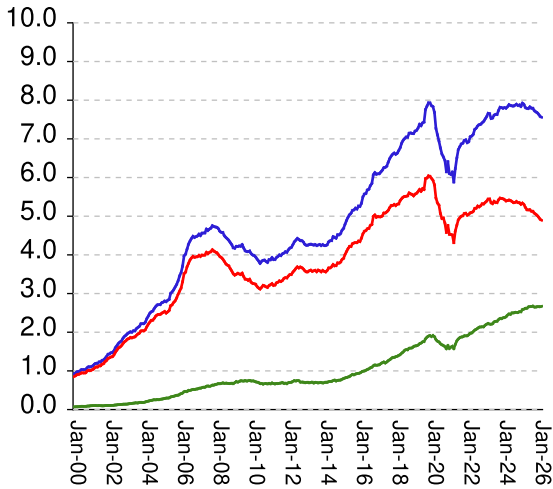
Admissions



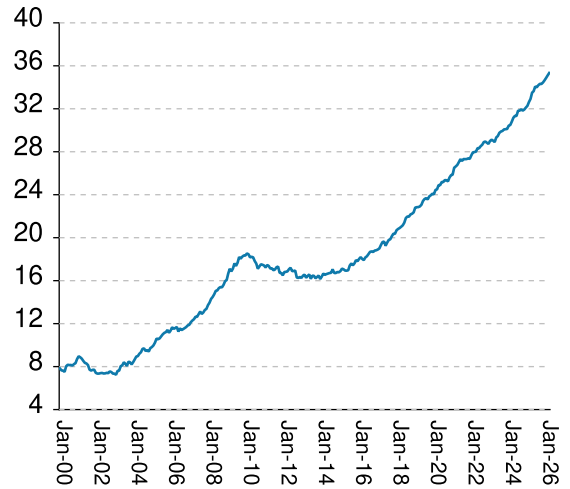
Releases



Population x1000



Percent Non-White

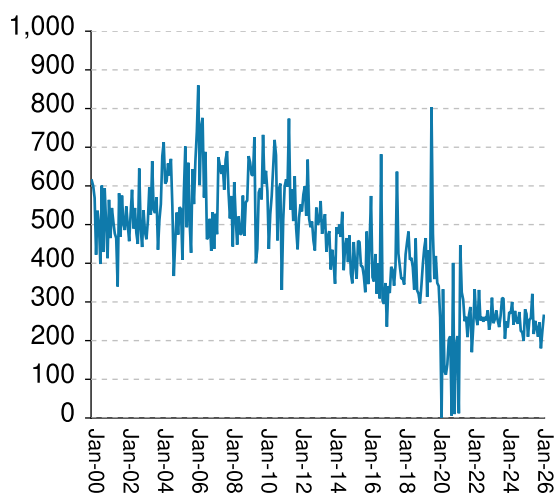


Methamphetamine admissions	RISES BY	55	from	221	to	276
Methamphetamine releases	RISES BY	23	from	272	to	295
Methamphetamine population	falls by	19	from	7577	to	7558
Meth white population	falls by	22	from	4917	to	4895
Meth non-white population	RISES BY	10	from	2660	to	2670
Percent meth inmates who are non-white	RISES BY	.22%	from	35.11%	to	35.33%

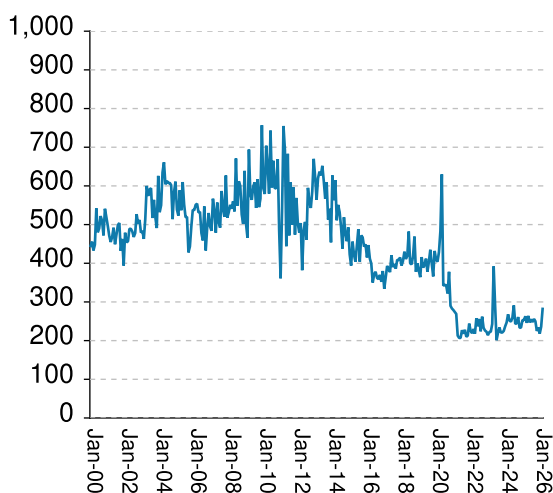
Non-violent first-incarcerants, by month, Jan-2000 to Mar-2026

Historically, about one in six Georgia prison inmates has been a first-time incarcerant with a non-violent crime. In 2012 Georgia passed HB1176, which aimed to curb the growth of prison population by steering the least dangerous, least hardened offenders away from prison through pre-trial intervention, diversion, drug courts and treatment programs, and raising the dollar thresholds that define property felonies. The expectation is that over time, these measures will reduce the percentage of first-time non-violent incarcerants in prison.

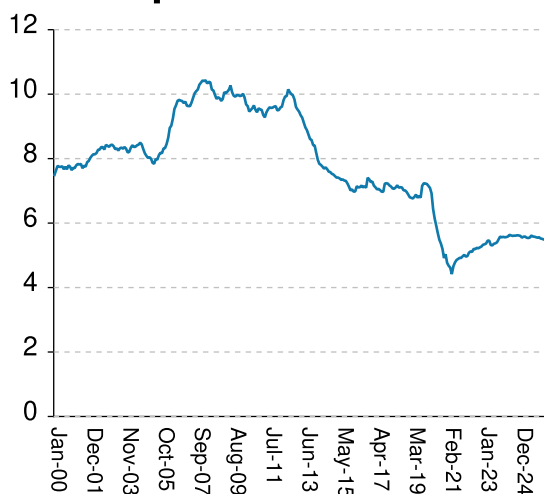
Admissions



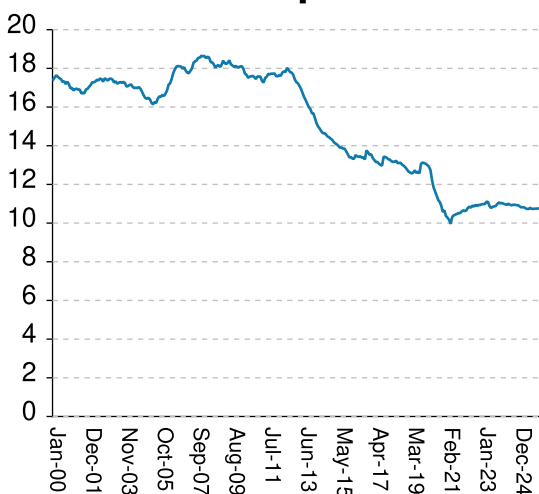
Releases



Population x1000



% Total Population

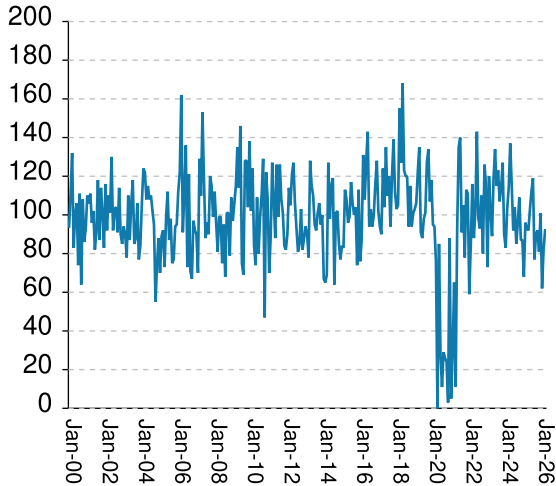


Non-viol/1st-Incar admissions	RISES BY	40	from	224	to	264
Non-viol/1st-Incar releases	RISES BY	46	from	236	to	282
Non-viol/1st-Incar population	falls by	18	from	5510	to	5492
Non-viol/1st-Incar % of total population	falls by	.07%	from	10.74%	to	10.67%

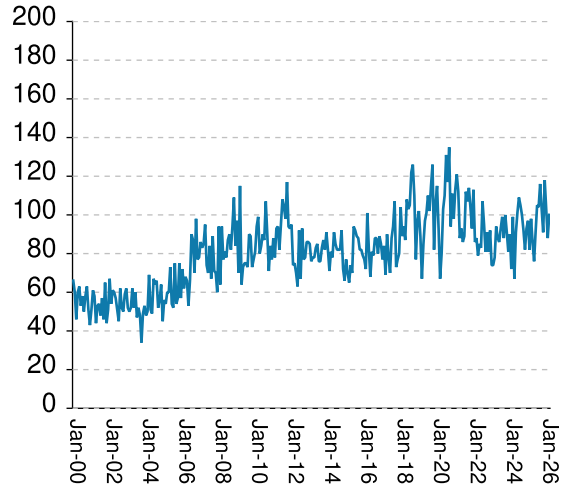
'Seven Deadly Sin', by month, Jan-2000 to Mar-2026

Tough legislation in 1995 imposed mandatory ten-year minimum terms for kidnapping, armed robbery, rape, aggravated sodomy, aggravated sexual battery, and aggravated child molestation, and a minimum of 25 years for murder. A second conviction resulted in life without parole. As predicted, longer prison terms caused population to climb steeply for about a decade. It then began to level off, as releases started catching up with admissions. The 2008 dip in percentage of total population (bottom right) was caused by the surge of methamphetamine convictions (Page MO-03). Note: these graphs include inmates convicted before 1995.

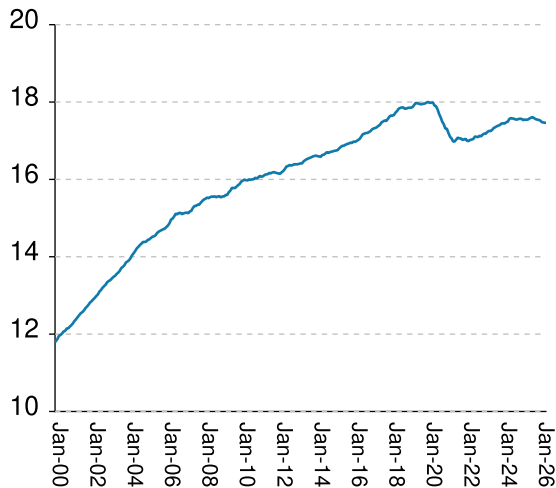
Admissions



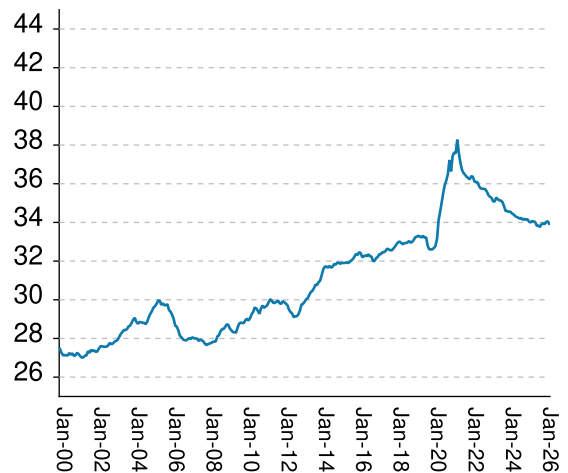
Releases



Population x1000



% Total Population



"Seven Deadly Sin" admissions	RISES BY	10	from	82	to	92
"Seven Deadly Sin" releases	RISES BY	12	from	88	to	100
"Seven Deadly Sin" population	falls by	8	from	17472	to	17464
"Seven Deadly Sin" % of total population	falls by	.13%	from	34.06%	to	33.93%

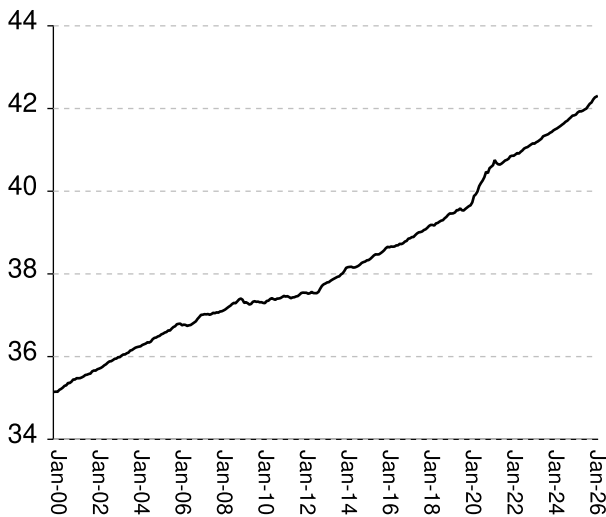
Inmate subpopulation counts and percentages, for the past 48 months

Month	Methamphetamine						1st Incar Non-Violent		Seven Deadly Sins	
	Total Number	Total Percent	White Number	White Percent	Non White Number	Non White Percent	Number	Percent	Number	Percent
Apr-22	7073	14.99%	5099	72.09%	1981	28.01%	5122	10.85%	17031	36.09%
May-22	7117	15.06%	5125	72.01%	2016	28.33%	5104	10.80%	17048	36.08%
Jun-22	7242	15.19%	5199	71.79%	2052	28.33%	5198	10.90%	17108	35.87%
Jul-22	7278	15.22%	5209	71.57%	2076	28.52%	5194	10.86%	17099	35.76%
Aug-22	7334	15.33%	5262	71.75%	2101	28.65%	5231	10.94%	17097	35.74%
Sep-22	7366	15.37%	5243	71.18%	2129	28.90%	5218	10.89%	17126	35.74%
Oct-22	7377	15.39%	5272	71.47%	2136	28.95%	5246	10.94%	17115	35.71%
Nov-22	7416	15.38%	5320	71.74%	2139	28.84%	5272	10.93%	17160	35.59%
Dec-22	7452	15.36%	5317	71.35%	2141	28.73%	5327	10.98%	17184	35.41%
Jan-23	7513	15.44%	5354	71.26%	2179	29.00%	5341	10.98%	17183	35.32%
Feb-23	7576	15.51%	5390	71.15%	2206	29.12%	5367	10.99%	17229	35.27%
Mar-23	7660	15.58%	5442	71.04%	2224	29.03%	5455	11.10%	17253	35.09%
Apr-23	7650	15.56%	5445	71.18%	2211	28.90%	5457	11.10%	17248	35.08%
May-23	7527	15.37%	5350	71.08%	2208	29.33%	5320	10.87%	17279	35.29%
Jun-23	7540	15.32%	5325	70.62%	2221	29.46%	5307	10.78%	17327	35.20%
Jul-23	7608	15.41%	5385	70.78%	2264	29.76%	5358	10.85%	17349	35.14%
Aug-23	7631	15.43%	5356	70.19%	2280	29.88%	5373	10.86%	17373	35.13%
Sep-23	7632	15.38%	5351	70.11%	2285	29.94%	5403	10.89%	17392	35.05%
Oct-23	7735	15.48%	5422	70.10%	2327	30.08%	5492	10.99%	17406	34.84%
Nov-23	7816	15.50%	5467	69.95%	2353	30.10%	5580	11.07%	17442	34.59%
Dec-23	7806	15.47%	5459	69.93%	2351	30.12%	5560	11.02%	17451	34.59%
Jan-24	7794	15.44%	5449	69.91%	2372	30.43%	5573	11.04%	17444	34.55%
Feb-24	7806	15.44%	5429	69.55%	2380	30.49%	5560	11.00%	17475	34.56%
Mar-24	7794	15.36%	5396	69.23%	2401	30.81%	5566	10.97%	17490	34.47%
Apr-24	7830	15.35%	5404	69.02%	2441	31.17%	5584	10.94%	17560	34.42%
May-24	7884	15.39%	5416	68.70%	2471	31.34%	5635	11.00%	17584	34.34%
Jun-24	7865	15.34%	5404	68.71%	2464	31.33%	5617	10.96%	17575	34.28%
Jul-24	7853	15.31%	5380	68.51%	2499	31.82%	5603	10.92%	17570	34.25%
Aug-24	7850	15.30%	5353	68.19%	2499	31.83%	5611	10.94%	17550	34.20%
Sep-24	7869	15.35%	5357	68.08%	2513	31.94%	5610	10.95%	17546	34.23%
Oct-24	7894	15.35%	5381	68.17%	2513	31.83%	5623	10.93%	17563	34.14%
Nov-24	7864	15.30%	5353	68.07%	2511	31.93%	5615	10.93%	17568	34.18%
Dec-24	7876	15.31%	5347	67.89%	2529	32.11%	5603	10.89%	17562	34.14%
Jan-25	7837	15.28%	5308	67.73%	2529	32.27%	5549	10.82%	17533	34.17%
Feb-25	7923	15.37%	5338	67.37%	2585	32.63%	5577	10.82%	17547	34.04%
Mar-25	7889	15.29%	5303	67.22%	2597	32.92%	5583	10.82%	17542	34.00%
Apr-25	7811	15.17%	5229	66.94%	2617	33.50%	5547	10.77%	17548	34.07%
May-25	7789	15.09%	5169	66.36%	2620	33.64%	5537	10.73%	17575	34.05%
Jun-25	7787	15.05%	5163	66.30%	2653	34.07%	5548	10.73%	17596	34.02%
Jul-25	7827	15.04%	5166	66.00%	2661	34.00%	5614	10.79%	17610	33.83%
Aug-25	7795	15.00%	5130	65.81%	2665	34.19%	5583	10.74%	17583	33.84%
Sep-25	7791	14.98%	5127	65.81%	2674	34.32%	5578	10.73%	17557	33.76%
Oct-25	7732	14.94%	5079	65.69%	2653	34.31%	5562	10.75%	17546	33.90%
Nov-25	7699	14.90%	5050	65.59%	2652	34.45%	5547	10.74%	17536	33.95%
Dec-25	7673	14.85%	5015	65.36%	2659	34.65%	5560	10.76%	17519	33.91%
Jan-26	7628	14.85%	4968	65.13%	2660	34.87%	5522	10.75%	17478	34.02%
Feb-26	7577	14.77%	4917	64.89%	2660	35.11%	5510	10.74%	17472	34.06%
Mar-26	7558	14.68%	4895	64.77%	2670	35.33%	5492	10.67%	17464	33.93%

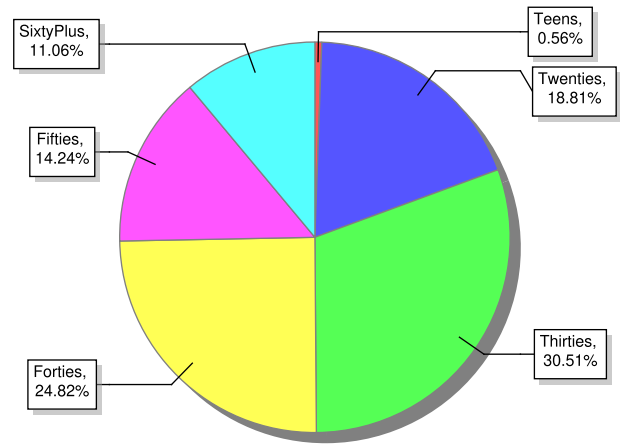
Overview of inmate age statistics, Jan-2000 to Mar-2026

The "aging inmate population" is a concern in correctional systems throughout America, including Georgia. Here, the increase in inmate age is the result of several factors. Teenagers have been steered away from prison by increased usage of probation and other alternatives, at least for their first convictions. And there has been a surge of middle-aged male sex offenders due to the expanding "It's OK to tell" ethos. But most importantly, more severe sentence lengths and release policies have greatly increased the length of time that most offenders -- especially violent ones -- spend in prison, thereby increasing their average age.

Average age since 2000



Current Age



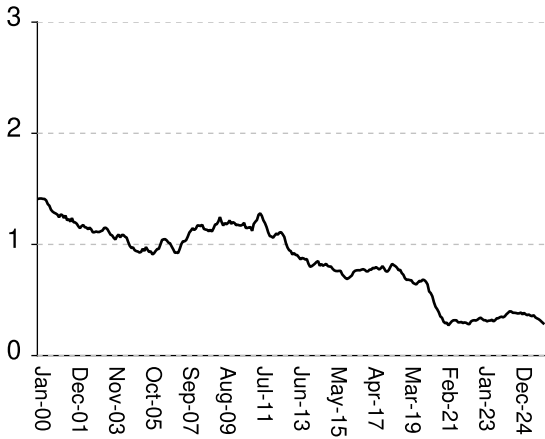
Mar-2026

Average age of active inmates	RISES BY	.02	from	42.27	to	42.29
Number in their teens	falls by	13	from	303	to	290
Percentage in their teens	falls by	.03%	from	.59%	to	.56%
Number in their twenties	RISES BY	27	from	9,659	to	9,686
Percentage in their twenties	falls by	.01%	from	18.83%	to	18.82%
Number in their thirties	RISES BY	46	from	15,662	to	15,708
Percentage in their thirties	falls by	.01%	from	30.53%	to	30.52%
Number in their forties	RISES BY	69	from	12,709	to	12,778
Percentage in their forties	RISES BY	.05%	from	24.78%	to	24.83%
Number in their fifties	RISES BY	36	from	7,296	to	7,332
Percentage in their fifties	RISES BY	.03%	from	14.22%	to	14.25%
Number age sixty and up	RISES BY	33	from	5,664	to	5,697
Percentage age sixty and up	RISES BY	.03%	from	11.04%	to	11.07%

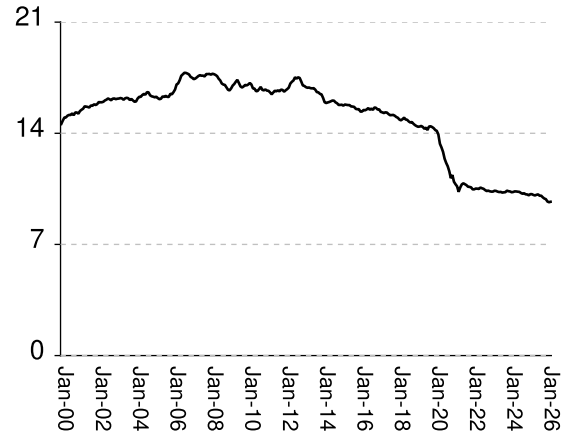
Monthly counts of inmates by age group, Jan-2000 to Mar-2026

Y-axis of Twenties/Thirties/Forties/Fifties runs from 0 to 21,000. Y-axis of Teens/Sixty+ runs from 0 to 3,000.

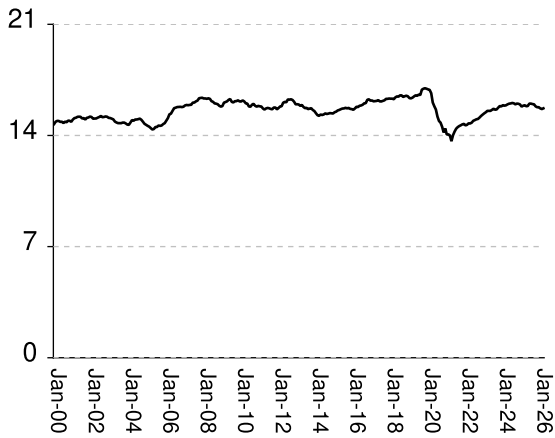
Teens x 1000



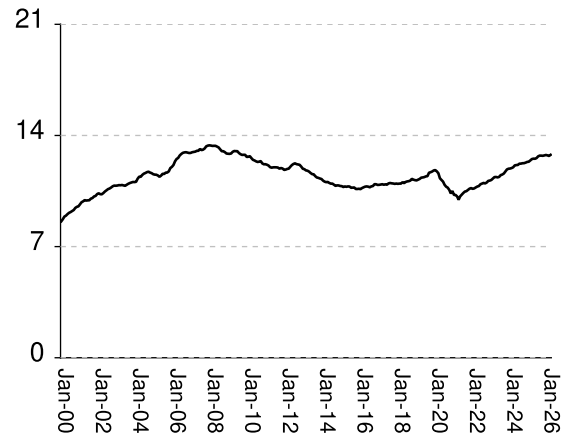
Twenties x 1000



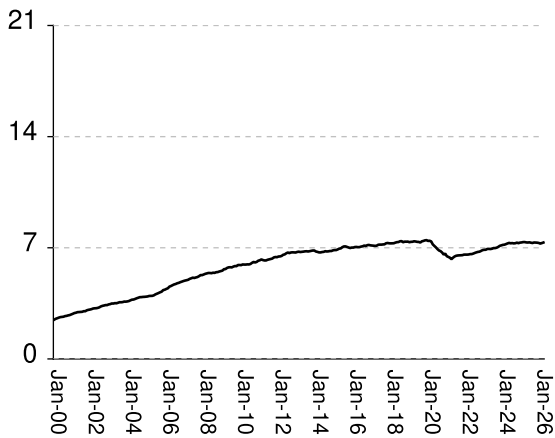
Thirties x 1000



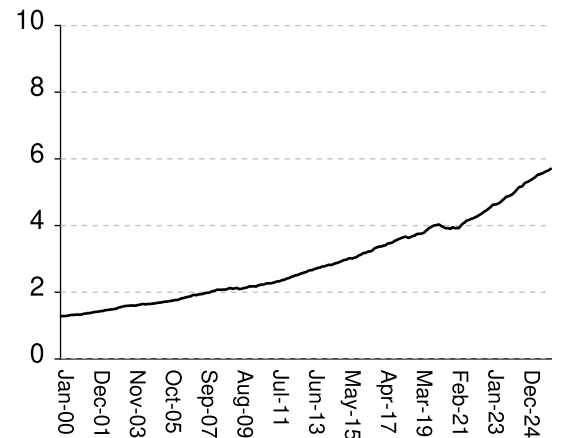
Forties x 1000



Fifties x 1000



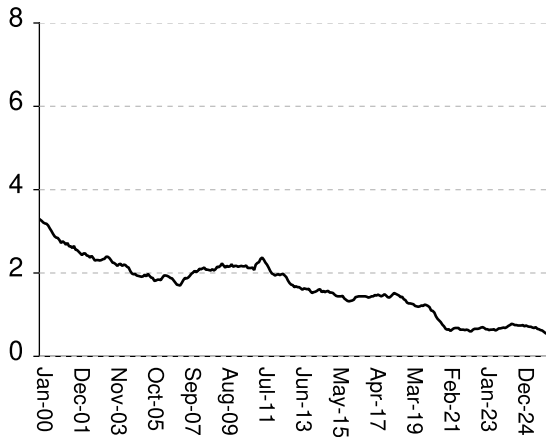
Sixty & Up x 1000



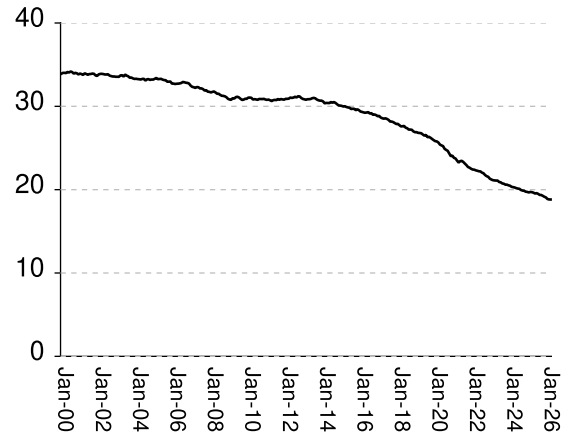
Monthly percentages of inmates by age group, Jan-2000 to Mar-2026

Y-axis of Twenties/Thirties/Forties/Fifties runs from 0% to 40%. Y-axis of Teens/Sixty+ runs from 0% to 8%

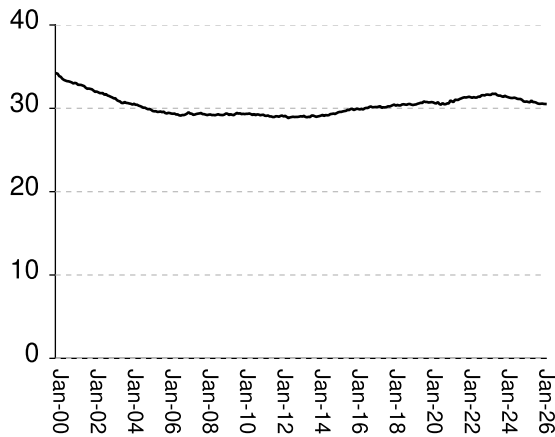
Teens (%)



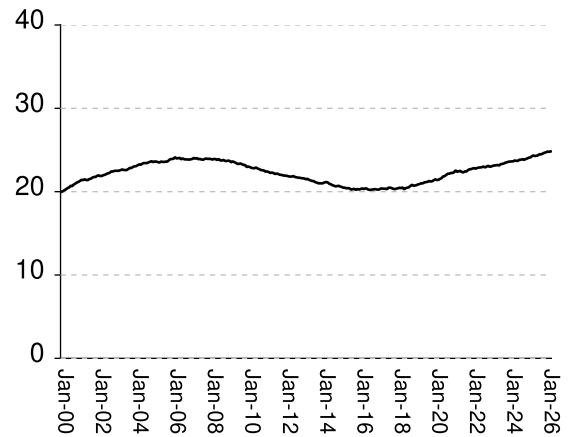
Twenties (%)



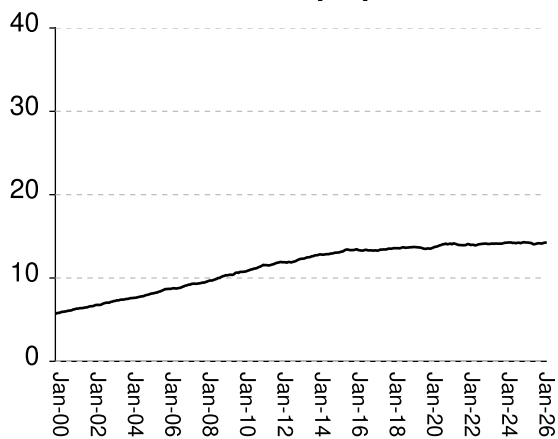
Thirties (%)



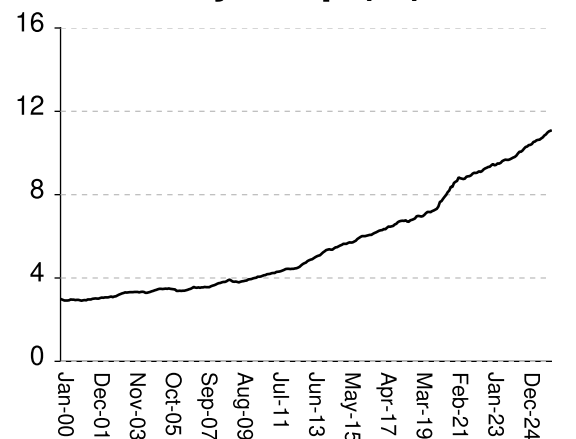
Forties (%)



Fifties (%)



Sixty & Up (%)

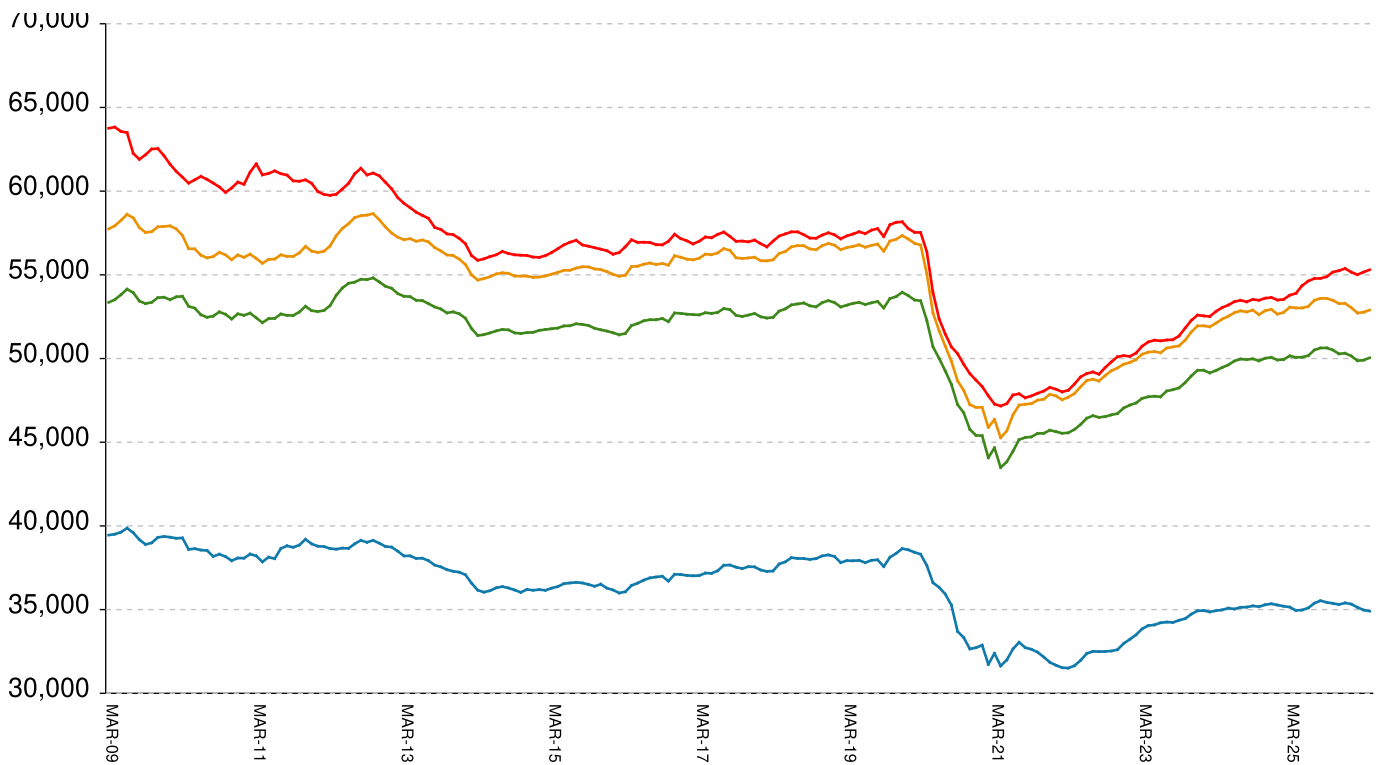


Inmate counts & percentages by age, for past 48 months

Month	Avg Age	Teens		Twenties		Thirties		Forties		Fifties		Sixty & Up	
		Number	Per cent	Number	Per cent	Number	Per cent	Number	Per cent	Number	Per cent	Number	Per cent
Apr-22	40.89	285	0.60%	10511	22.27%	14756	31.27%	10783	22.85%	6601	13.99%	4274	9.06%
May-22	40.92	282	0.60%	10495	22.21%	14807	31.34%	10816	22.89%	6603	13.97%	4309	9.12%
Jun-22	40.91	307	0.64%	10581	22.19%	14923	31.29%	10927	22.91%	6634	13.91%	4336	9.09%
Jul-22	40.95	315	0.66%	10536	22.04%	14967	31.30%	10968	22.94%	6676	13.96%	4364	9.13%
Aug-22	40.99	318	0.66%	10504	21.96%	15018	31.40%	11009	23.01%	6712	14.03%	4405	9.21%
Sep-22	41.03	315	0.66%	10422	21.75%	15040	31.38%	10980	22.91%	6740	14.06%	4437	9.26%
Oct-22	41.05	322	0.67%	10364	21.62%	15126	31.56%	11034	23.02%	6755	14.09%	4455	9.29%
Nov-22	41.07	334	0.69%	10387	21.54%	15227	31.58%	11136	23.10%	6802	14.11%	4500	9.33%
Dec-22	41.1	341	0.70%	10347	21.32%	15311	31.55%	11158	22.99%	6854	14.12%	4533	9.34%
Jan-23	41.13	329	0.68%	10325	21.22%	15391	31.64%	11197	23.02%	6873	14.13%	4576	9.41%
Feb-23	41.16	318	0.65%	10327	21.14%	15459	31.65%	11289	23.11%	6877	14.08%	4627	9.47%
Mar-23	41.15	318	0.65%	10380	21.11%	15547	31.62%	11377	23.14%	6927	14.09%	4627	9.41%
Apr-23	41.18	308	0.63%	10371	21.09%	15548	31.62%	11385	23.16%	6930	14.10%	4635	9.43%
May-23	41.21	314	0.64%	10326	21.09%	15548	31.76%	11360	23.20%	6921	14.14%	4651	9.50%
Jun-23	41.24	315	0.64%	10299	20.92%	15612	31.72%	11391	23.14%	6940	14.10%	4673	9.49%
Jul-23	41.27	322	0.65%	10308	20.88%	15683	31.76%	11503	23.30%	6980	14.14%	4708	9.53%
Aug-23	41.33	308	0.62%	10264	20.75%	15623	31.59%	11538	23.33%	6981	14.12%	4754	9.61%
Sep-23	41.35	318	0.64%	10280	20.71%	15640	31.52%	11602	23.38%	7006	14.12%	4790	9.65%
Oct-23	41.36	335	0.67%	10292	20.60%	15752	31.53%	11729	23.48%	7055	14.12%	4838	9.68%
Nov-23	41.38	336	0.67%	10386	20.60%	15853	31.44%	11859	23.52%	7121	14.12%	4874	9.67%
Dec-23	41.41	345	0.68%	10352	20.52%	15832	31.38%	11905	23.60%	7152	14.18%	4877	9.67%
Jan-24	41.43	350	0.69%	10336	20.47%	15907	31.51%	11917	23.61%	7183	14.23%	4898	9.70%
Feb-24	41.47	344	0.68%	10287	20.34%	15878	31.40%	11947	23.63%	7195	14.23%	4923	9.74%
Mar-24	41.5	353	0.70%	10301	20.30%	15900	31.34%	11996	23.64%	7233	14.26%	4960	9.78%
Apr-24	41.52	371	0.73%	10340	20.26%	15960	31.28%	12113	23.74%	7275	14.26%	5006	9.81%
May-24	41.55	384	0.75%	10335	20.18%	16001	31.24%	12135	23.70%	7307	14.27%	5057	9.87%
Jun-24	41.58	398	0.78%	10321	20.13%	16017	31.24%	12143	23.69%	7282	14.20%	5112	9.97%
Jul-24	41.61	397	0.77%	10309	20.10%	16045	31.28%	12222	23.83%	7294	14.22%	5159	10.06%
Aug-24	41.64	385	0.75%	10240	19.96%	16025	31.23%	12227	23.83%	7276	14.18%	5163	10.06%
Sep-24	41.68	385	0.75%	10194	19.89%	15959	31.14%	12250	23.90%	7287	14.22%	5186	10.12%
Oct-24	41.7	383	0.74%	10223	19.87%	16007	31.12%	12256	23.82%	7323	14.24%	5253	10.21%
Nov-24	41.75	379	0.74%	10157	19.76%	15993	31.12%	12289	23.91%	7289	14.18%	5289	10.29%
Dec-24	41.78	380	0.74%	10147	19.73%	15952	31.01%	12333	23.98%	7326	14.24%	5306	10.31%
Jan-25	41.83	387	0.75%	10094	19.67%	15818	30.83%	12347	24.07%	7336	14.30%	5326	10.38%
Feb-25	41.83	371	0.72%	10165	19.72%	15872	30.79%	12427	24.11%	7358	14.27%	5355	10.39%
Mar-25	41.85	384	0.74%	10166	19.70%	15901	30.82%	12512	24.25%	7360	14.26%	5381	10.43%
Apr-25	41.9	371	0.72%	10115	19.64%	15842	30.76%	12538	24.34%	7338	14.25%	5422	10.53%
May-25	41.93	364	0.71%	10087	19.54%	15855	30.72%	12533	24.28%	7332	14.21%	5443	10.55%
Jun-25	41.93	369	0.71%	10126	19.58%	16006	30.94%	12575	24.31%	7344	14.20%	5489	10.61%
Jul-25	41.95	359	0.69%	10150	19.50%	16006	30.75%	12683	24.37%	7319	14.06%	5530	10.63%
Aug-25	41.98	355	0.68%	10067	19.37%	15977	30.75%	12730	24.50%	7302	14.05%	5530	10.64%
Sep-25	42	363	0.70%	10069	19.36%	15960	30.69%	12730	24.48%	7333	14.10%	5563	10.70%
Oct-25	42.06	344	0.66%	9968	19.26%	15832	30.59%	12719	24.57%	7328	14.16%	5566	10.75%
Nov-25	42.11	335	0.65%	9890	19.15%	15778	30.54%	12743	24.67%	7322	14.17%	5601	10.84%
Dec-25	42.15	328	0.63%	9849	19.07%	15779	30.55%	12770	24.72%	7305	14.14%	5625	10.89%
Jan-26	42.22	317	0.62%	9700	18.88%	15704	30.57%	12746	24.81%	7264	14.14%	5641	10.98%
Feb-26	42.27	303	0.59%	9659	18.83%	15662	30.53%	12709	24.78%	7296	14.22%	5664	11.04%
Mar-26	42.29	290	0.56%	9686	18.82%	15708	30.52%	12778	24.83%	7332	14.25%	5697	11.07%

All housed offenders under GDC jurisdiction

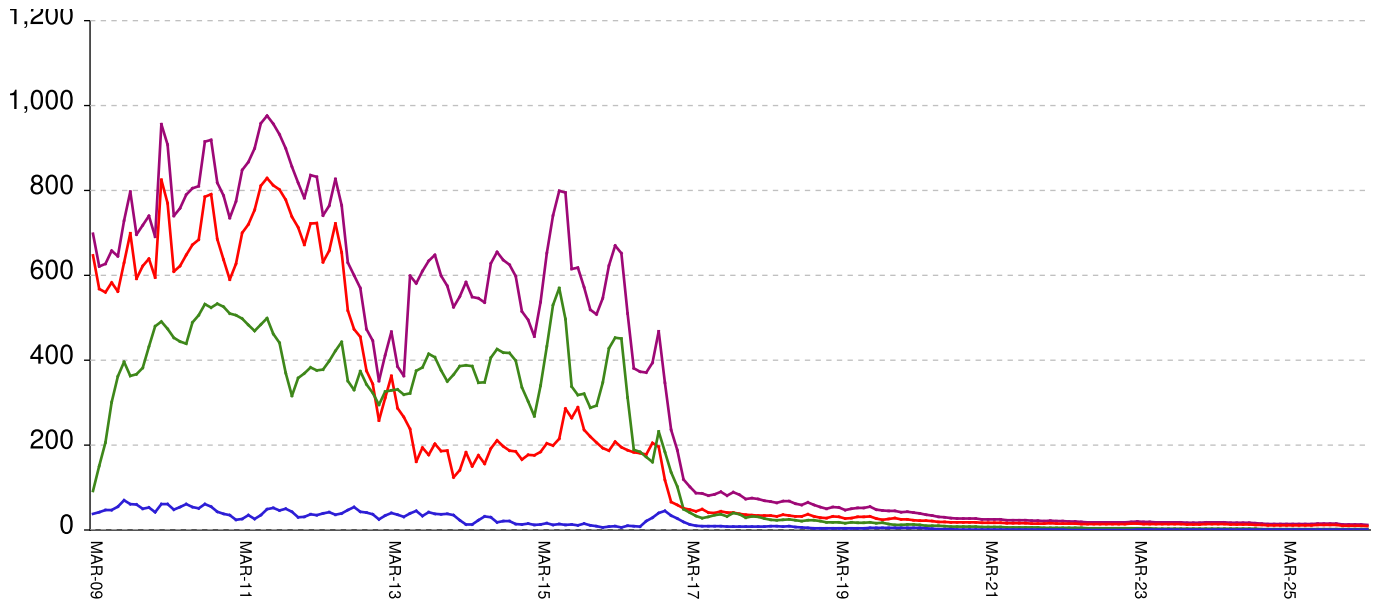
March 20, 2009 through April 24, 2026



All in bed + probs in jail + backlog	falls by	51	from	55,307	to	55,256
Probationers in jail	12	at	12
Inmate jail backlog	RISES BY	83	from	2,357	to	2,440
All in beds: inmate + Prob + parole	falls by	134	from	52,938	to	52,804
Total probationers in beds	falls by	3	from	2,844	to	2,841
Probation detention centers	falls by	19	from	1,382	to	1,363
Probation boot camps	falls by	...	from		to	
Probation RSAT	RISES BY	16	from	1,462	to	1,478
Parole revocation centers	falls by	...	from		to	
All in inmate beds: state + other	falls by	131	from	50,094	to	49,963
Other inmate facilities:	falls by	23	from	15,165	to	15,142
Inmate boot camps	0	at	0
Private prisons	falls by	5	from	8,099	to	8,094
County prisons	falls by	14	from	4,289	to	4,275
Transitional centers	falls by	4	from	2,777	to	2,773
In state prisons only	falls by	108	from	34,929	to	34,821

Probationers in jail awaiting placement in facilities

March 20, 2009 through April 24, 2026



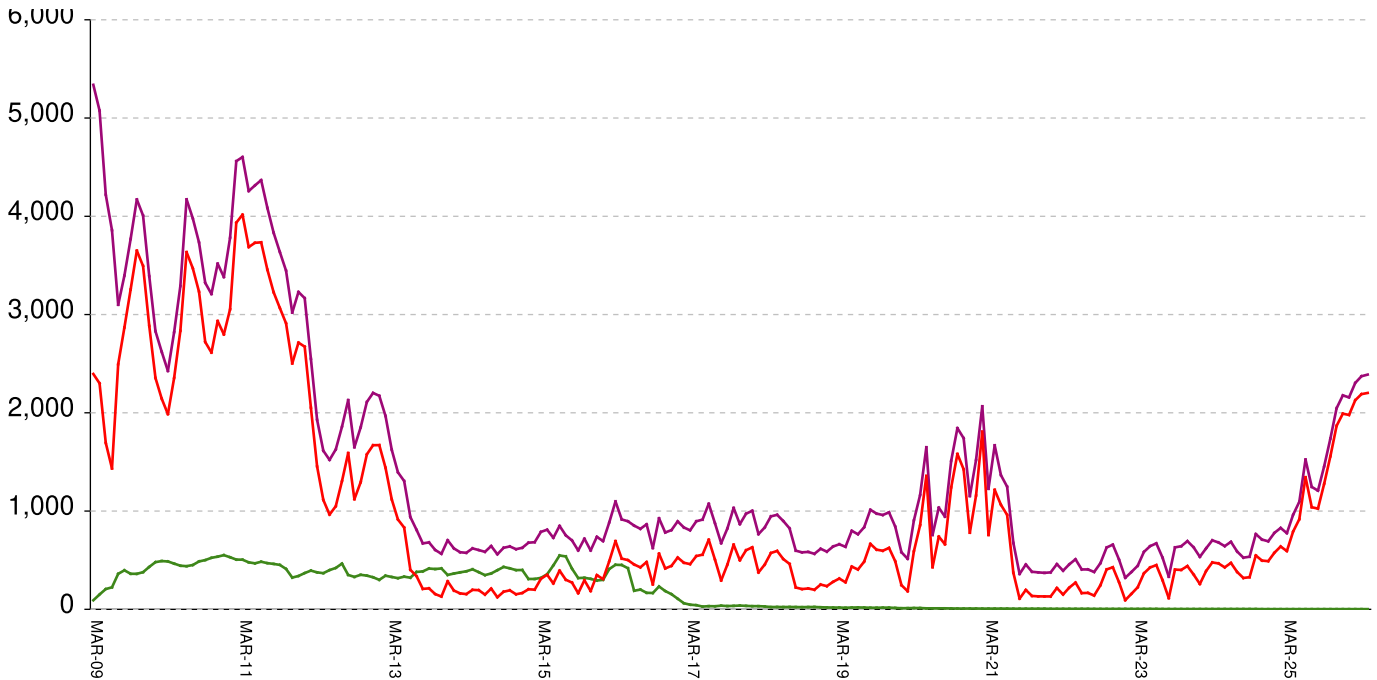
This graph shows, for each Friday since March 20 2009, the number of sentenced felony probationers who were waiting in jail for placement in facilities that GDC operates for housing probationers -- detention centers, probation residential substance abuse treatment (RSAT) centers, and probation boot camps. Counts include both those offenders sentenced directly from court, and those whose street probation was revoked.

Total probationers waiting in jail	level	at	12
...waiting for detention centers	level	at	9
...waiting for probation RSAT	level	at	2
...waiting for probation boot camps	level	at	1

The highest number of probationers waiting in jail was 994 on 05-MAR-10
 ...highest number waiting for detention centers was 859 on 05-MAR-10
 ...highest number waiting for probation RSAT was 592 on 10-JUL-15
 ...highest number waiting for probation boot camps was 70 on 18-SEP-09

State inmates in jail awaiting placement in facilities

March 20, 2009 through April 24, 2026



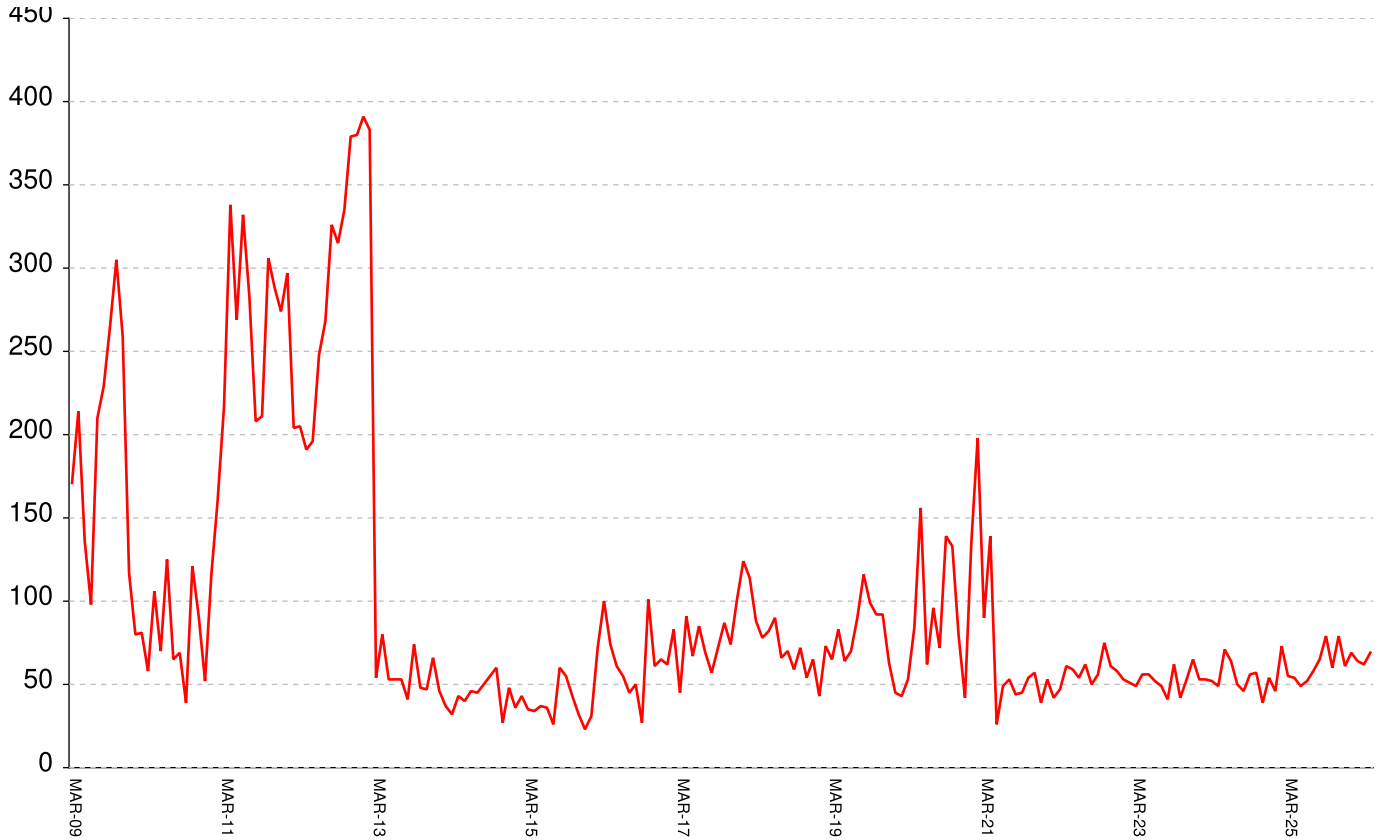
This graph shows, for each Friday since March 2009, the number of prisoners, probationers, and parolees in local jails who have been sentenced or revoked to state prison and whose documents have been received and verified by GDC. Most are almost immediately assigned to a diagnostic center, and are designated as in "admission processing". Of those a few hundred may be in the "transportation delayed" category because there is no room in the assigned diagnostic center, or because the inmate is being held for medical reasons, or for other court proceedings, or other reasons. Those remaining are "ready to be picked up".

Total state inmates waiting in jail	RISES BY 83	from 2357	to 2440
... not yet assigned to a diagnostic center	RISES BY 2	from 11	to 13
... total "in admission processing"	RISES BY 81	from 2346	to 2427
... with "transportation delayed"	falls by 2	from 180	to 178
... ready to be picked up	RISES BY 83	from 2166	to 2249

The highest number of state inmates waiting in jail was 5338 on 27-MAR-09
 ... highest number not asg to a diagnostic center was 2881 on 12-JUN-09
 ... highest number in admission processing was 4916 on 25-MAR-11
 ... highest number with transportation delayed was 645 on 14-JAN-11
 ... highest number ready to be pickup was 4435 on 25-MAR-11

Female state inmates in jail awaiting pickup

March 20, 2009 through April 24, 2026



This graph shows, for each Friday since March 2009, the number of female state prisoners in local jails who were assigned to diagnostic centers but had not yet been picked up.

Female state inmates in jails waiting picked up **RISES BY 2** **from 53** **to 55**

The highest number of female inmates waiting in jail was 424 on 01-FEB-13

The lowest number of female inmates waiting in jail was 17 on 20-MAR-20

Summary of housed prisoners, parolees, and probationers

Week Ending	Prison	Parole	Probation			Prison+parole +probation	Jail		Total
	Total inmates	Revocation centers	Prob RSAT	Boot camp	Detention		Inmate backlog	Probationers	Prison+parole +probation+jail
02-May-2025	50070		1461		1501	53032	1094	14	54140
09-May-2025	49969		1446		1504	52919	1192	14	54125
16-May-2025	50043		1435		1473	52951	1355	14	54320
23-May-2025	50107		1428		1501	53036	1453	14	54503
30-May-2025	50224		1437		1509	53170	1477	14	54661
06-Jun-2025	50133		1455		1482	53070	1520	14	54604
13-Jun-2025	50139		1440		1487	53066	1524	14	54604
20-Jun-2025	50045		1425		1525	52995	1543	14	54552
27-Jun-2025	50363		1438		1512	53313	1425	14	54752
04-Jul-2025	50404		1450		1516	53370	1394	14	54778
11-Jul-2025	50529		1433		1531	53493	1191	14	54698
18-Jul-2025	50525		1462		1492	53479	1246	14	54739
25-Jul-2025	50570		1485		1514	53569	1318	14	54901
01-Aug-2025	50604		1492		1499	53595	1266	14	54875
08-Aug-2025	50586		1483		1482	53551	1112	14	54677
15-Aug-2025	50624		1487		1483	53594	1113	14	54721
22-Aug-2025	50654		1478		1463	53595	1204	15	54814
29-Aug-2025	50683		1491		1461	53635	1208	15	54858
05-Sep-2025	50623		1491		1458	53572	1164	15	54751
12-Sep-2025	50671		1504		1474	53649	1168	15	54832
19-Sep-2025	50604		1479		1477	53560	1350	15	54925
26-Sep-2025	50642		1490		1446	53578	1456	15	55049
03-Oct-2025	50592		1496		1426	53514	1545	15	55074
10-Oct-2025	50542		1502		1438	53482	1568	15	55065
17-Oct-2025	50565		1526		1461	53552	1619	15	55186
24-Oct-2025	50468		1540		1470	53478	1738	15	55231
31-Oct-2025	50381		1483		1513	53377	1861	15	55253
07-Nov-2025	50231		1503		1493	53227	1898	15	55140
14-Nov-2025	50276		1516		1485	53277	1907	15	55199
21-Nov-2025	50343		1512		1498	53353	1956	15	55324
28-Nov-2025	50271		1495		1515	53281	2047	15	55343
05-Dec-2025	50325		1472		1501	53298	1989	14	55301
12-Dec-2025	50317		1481		1499	53297	2063	13	55373
19-Dec-2025	50326		1503		1474	53303	2078	13	55394
26-Dec-2025	50291		1493		1474	53258	2177	13	55448
02-Jan-2026	50238		1475		1427	53140	2171	13	55324
09-Jan-2026	50250		1479		1429	53158	1965	13	55136
16-Jan-2026	50195		1483		1436	53114	2042	13	55169
23-Jan-2026	50092		1469		1430	52991	2157	13	55161
30-Jan-2026	49980		1465		1364	52809	2182	13	55004
06-Feb-2026	49874		1475		1390	52739	2212	13	54964
13-Feb-2026	49848		1464		1399	52711	2277	13	55001
20-Feb-2026	49860		1455		1374	52689	2304	13	55006
27-Feb-2026	49899		1447		1403	52749	2316	13	55078
06-Mar-2026	49854		1448		1412	52714	2364	13	55091
13-Mar-2026	49912		1458		1410	52780	2360	13	55153
20-Mar-2026	49857		1468		1406	52731	2430	13	55174
27-Mar-2026	49997		1464		1394	52855	2372	13	55240
03-Apr-2026	50055		1464		1396	52915	2389	13	55317
10-Apr-2026	50068		1461		1400	52929	2396	12	55337
17-Apr-2026	50094		1462		1382	52938	2357	12	55307
24-Apr-2026	49963		1478		1363	52804	2440	12	55256

Offenders housed in facilities for state prisoners

Week ending	In facilities other than state prisons							Total Inmates
	In state prisons	Transition centers	County prisons	Pre-rel centers	Private prisons	Inmate boot camps	Total others	
02-May-2025	34954	2567	4511		8037	1	15116	50070
09-May-2025	34900	2544	4495		8029	1	15069	49969
16-May-2025	34954	2554	4502		8032	1	15089	50043
23-May-2025	35001	2577	4501		8028	0	15106	50107
30-May-2025	35065	2605	4511		8043	0	15159	50224
06-Jun-2025	35068	2587	4440		8038	0	15065	50133
13-Jun-2025	35092	2599	4416		8032	0	15047	50139
20-Jun-2025	35027	2590	4442		7986	0	15018	50045
27-Jun-2025	35203	2645	4483		8032	0	15160	50363
04-Jul-2025	35284	2652	4430		8038	0	15120	50404
11-Jul-2025	35380	2669	4436		8044	0	15149	50529
18-Jul-2025	35399	2690	4400		8036	0	15126	50525
25-Jul-2025	35464	2698	4363		8045	0	15106	50570
01-Aug-2025	35516	2709	4347		8032	0	15088	50604
08-Aug-2025	35507	2698	4347		8034	0	15079	50586
15-Aug-2025	35522	2714	4349		8039	0	15102	50624
22-Aug-2025	35539	2726	4348		8041	0	15115	50654
29-Aug-2025	35576	2714	4352		8041	0	15107	50683
05-Sep-2025	35478	2721	4352		8072	0	15145	50623
12-Sep-2025	35437	2739	4396		8099	0	15234	50671
19-Sep-2025	35399	2749	4378		8078	0	15205	50604
26-Sep-2025	35420	2732	4384		8106	0	15222	50642
03-Oct-2025	35389	2727	4371		8105	0	15203	50592
10-Oct-2025	35390	2705	4350		8097	0	15152	50542
17-Oct-2025	35402	2716	4337		8110	0	15163	50565
24-Oct-2025	35359	2744	4297		8068	0	15109	50468
31-Oct-2025	35328	2751	4237		8065	0	15053	50381
07-Nov-2025	35288	2748	4167		8028	0	14943	50231
14-Nov-2025	35293	2750	4193		8040	0	14983	50276
21-Nov-2025	35342	2756	4211		8034	0	15001	50343
28-Nov-2025	35305	2745	4168		8053	0	14966	50271
05-Dec-2025	35396	2746	4134		8049	0	14929	50325
12-Dec-2025	35370	2759	4130		8058	0	14947	50317
19-Dec-2025	35414	2755	4107		8049	1	14912	50326
26-Dec-2025	35409	2737	4082		8062	1	14882	50291
02-Jan-2026	35371	2745	4056		8065	1	14867	50238
09-Jan-2026	35363	2780	4032		8074	1	14887	50250
16-Jan-2026	35354	2745	3988		8107	1	14841	50195
23-Jan-2026	35302	2731	3960		8098	1	14790	50092
30-Jan-2026	35249	2730	3926		8074	1	14731	49980
06-Feb-2026	35179	2729	3891		8074	1	14695	49874
13-Feb-2026	35121	2721	3906		8099	1	14727	49848
20-Feb-2026	35112	2747	3898		8102	1	14748	49860
27-Feb-2026	35132	2750	3907		8109	1	14767	49899
06-Mar-2026	35106	2739	3932		8076	1	14748	49854
13-Mar-2026	35010	2751	4084		8066	1	14902	49912
20-Mar-2026	34880	2758	4146		8072	1	14977	49857
27-Mar-2026	34907	2761	4212		8116	1	15090	49997
03-Apr-2026	34940	2757	4236		8122	0	15115	50055
10-Apr-2026	34946	2755	4263		8104	0	15122	50068
17-Apr-2026	34929	2777	4289		8099	0	15165	50094
24-Apr-2026	34821	2773	4275		8094	0	15142	49963

Offenders waiting in local jails for state facilities

Week ending	Probationers waiting in jail				Probationers waiting in jail					Assigned females
	.. for PDCs	.. for RSAT	.. for boot camps	Total	Total backlog	Not yet assigned	In adm process	Delayed transport	Ready for pickup	
02-May-2025	11	2	1	14	1094	9	1085	168	917	49
09-May-2025	11	2	1	14	1192	9	1183	171	1012	58
16-May-2025	11	2	1	14	1355	8	1347	178	1169	62
23-May-2025	11	2	1	14	1453	8	1445	181	1264	69
30-May-2025	11	2	1	14	1477	9	1468	184	1284	58
06-Jun-2025	11	2	1	14	1520	8	1512	176	1336	65
13-Jun-2025	11	2	1	14	1524	8	1516	172	1344	52
20-Jun-2025	11	2	1	14	1543	9	1534	179	1355	46
27-Jun-2025	11	2	1	14	1425	9	1416	179	1237	35
04-Jul-2025	11	2	1	14	1394	9	1385	202	1183	53
11-Jul-2025	11	2	1	14	1191	9	1182	201	981	50
18-Jul-2025	11	2	1	14	1246	9	1237	198	1039	58
25-Jul-2025	11	2	1	14	1318	9	1309	203	1106	70
01-Aug-2025	11	2	1	14	1266	9	1257	192	1065	59
08-Aug-2025	11	2	1	14	1112	11	1101	177	924	40
15-Aug-2025	11	2	1	14	1113	10	1103	174	929	51
22-Aug-2025	12	2	1	15	1204	10	1194	171	1023	60
29-Aug-2025	12	2	1	15	1208	8	1200	175	1025	65
05-Sep-2025	12	2	1	15	1164	8	1156	177	979	63
12-Sep-2025	12	2	1	15	1168	8	1160	178	982	68
19-Sep-2025	12	2	1	15	1350	8	1342	176	1166	61
26-Sep-2025	12	2	1	15	1456	9	1447	169	1278	79
03-Oct-2025	12	2	1	15	1545	8	1537	169	1368	75
10-Oct-2025	12	2	1	15	1568	8	1560	171	1389	66
17-Oct-2025	12	2	1	15	1619	9	1610	171	1439	73
24-Oct-2025	12	2	1	15	1738	8	1730	172	1558	60
31-Oct-2025	12	2	1	15	1861	10	1851	167	1684	53
07-Nov-2025	12	2	1	15	1898	11	1887	168	1719	58
14-Nov-2025	12	2	1	15	1907	12	1895	169	1726	67
21-Nov-2025	12	2	1	15	1956	11	1945	175	1770	86
28-Nov-2025	12	2	1	15	2047	11	2036	168	1868	79
05-Dec-2025	11	2	1	14	1989	10	1979	171	1808	72
12-Dec-2025	10	2	1	13	2063	11	2052	172	1880	79
19-Dec-2025	10	2	1	13	2078	11	2067	172	1895	53
26-Dec-2025	10	2	1	13	2177	11	2166	175	1991	61
02-Jan-2026	10	2	1	13	2171	11	2160	172	1988	45
09-Jan-2026	10	2	1	13	1965	10	1955	175	1780	34
16-Jan-2026	10	2	1	13	2042	9	2033	175	1858	59
23-Jan-2026	10	2	1	13	2157	9	2148	170	1978	69
30-Jan-2026	10	2	1	13	2182	9	2173	168	2005	52
06-Feb-2026	10	2	1	13	2212	9	2203	164	2039	61
13-Feb-2026	10	2	1	13	2277	9	2268	164	2104	71
20-Feb-2026	10	2	1	13	2304	9	2295	167	2128	64
27-Feb-2026	10	2	1	13	2316	9	2307	168	2139	47
06-Mar-2026	10	2	1	13	2364	9	2355	172	2183	66
13-Mar-2026	10	2	1	13	2360	10	2350	174	2176	76
20-Mar-2026	10	2	1	13	2430	10	2420	173	2247	49
27-Mar-2026	10	2	1	13	2372	10	2362	172	2190	62
03-Apr-2026	10	2	1	13	2389	10	2379	177	2202	69
10-Apr-2026	9	2	1	12	2396	11	2385	183	2202	57
17-Apr-2026	9	2	1	12	2357	11	2346	180	2166	53
24-Apr-2026	9	2	1	12	2440	13	2427	178	2249	55