

# Friday Report - overview and contents

The pages in The Friday Report are about adult offenders in Georgia's prisons and jails. They contain statistical snapshots and trends in the populations and movements of offenders in the state prison system, on probation, on parole, and in local jails. Information comes from databases of the Georgia Department of Corrections (GDC) and the Board of Pardons and Paroles, and from data provided by local jailers. Information is summarized into tables in the GDC/Parole Data Warehouse, and is extracted into these pages each Friday. Pages are organized according to the table that supplied the data.

<p><b>The Monthly Research Table</b>, named "MO_RESRCH" or simply "MO", contains data about state prisoners, grouped into statistically interesting categories. The table contains one record per month, from January 2000 to the present. Despite its being "monthly", it is updated weekly, because some data trickles in for several weeks before it becomes stable history.</p>	
Page	Content
MO-01	Clemencies and maxouts. Monthly graph from 2000 to present shows the monthly departures from prison via actions by the Georgia Parole Board (clemencies), and via service of 100% of the court ordered sentence (maxouts)
MO-02	48 months of releases. Table shows counts and percentages of releases via clemencies and maxouts, with and without probation to follow, for each of the past 48 months.
MO-03	Methamphetamine. Monthly graph from 2000 to present shows admissions, departures, population, and percent of population of inmates with a current offense of methamphetamine possession, sale, manufacturing, or trafficking, and the changing racial composition of the methamphetamine population
MO-04	Non-violent first incarcerants. Monthly graph from 2000 to present shows admissions, departures, population, and percent of population of inmates without violent or sex crimes, who are serving their first Georgia felony incarceration.
MO-05	Seven Deadly Sins. Monthly graph from 2000 to present shows admissions, departures, population, and percent of population of inmates convicted of kidnapping, armed robbery, rape, aggravated sodomy, aggravated sexual battery, and aggravated child molestation, for whom especially severe penalties are prescribed.
MO-06	48 months of inmate subpopulations. Table shows number and percentage of white and non-white inmates with methamphetamine offenses, and non-violent first incarcerants, and inmates convicted of the Seven Deadly Sins.
MO-07	Inmate age overview. Line graph shows the average age of the inmate population, by month from 2000 to the present. Pie chart shows the number of currently active inmates in their teens, twenties, thirties, forties, fifties, and age sixty+.
MO-08	Counts by age group. Graphs show the count, by month from 2000 to the present, of inmates in their teens, twenties, thirties, forties, fifties, and age sixty+.
MO-09	Percentages by age group. Graphs show the percentages, by month from 2000 to the present, of inmates in their teens, twenties, thirties, forties, fifties, and age sixty+.
MO-10	48 months of inmate ages. Table shows average age of the standing population, and counts and percentages of teens, twenties, thirties, forties, fifties, and sixty+, for each of the past 48 months.

# Friday Report - overview and contents (continued)

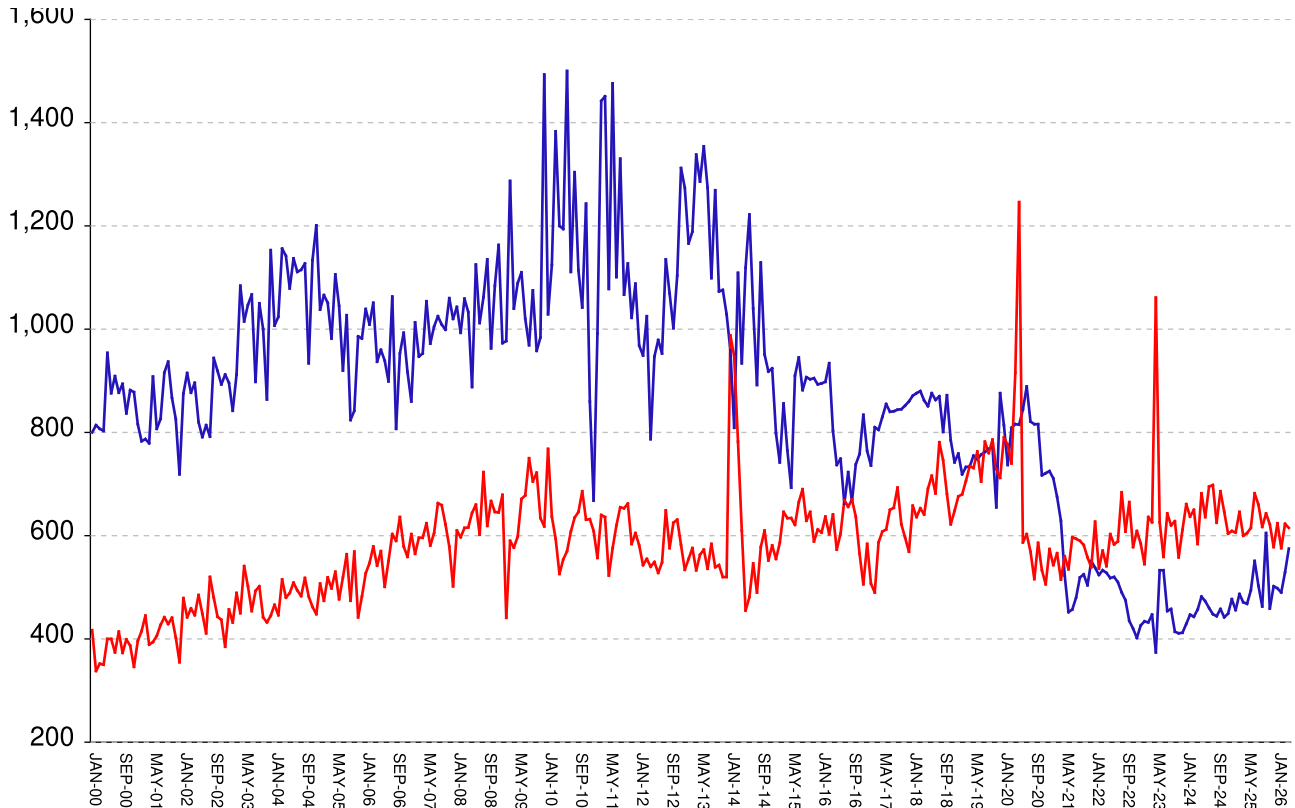
**The MSR Table** is based on the Management Summary Report (MSR), a snapshot report posted each week in GDC's Scribe database. MSR\_RESRCH gathers that data into weekly trends, with one record for each Friday since March 20th, 2009

Page	Content
<b>MSR-01</b>	All housed offenders. Weekly graph from March 20, 2009 to present, showing counts of inmates in state prisons, transitional centers, county prisons, private prisons, inmate boot camps, parole revocation centers, probation Residential Substance Abuse Treatment (RSAT), probation boot camps, probation detention centers, plus the inmate jail backlog and probationers in jail waiting for state facilities.
<b>MSR-02</b>	Probationers in jail. Weekly graph from March 20, 2009 to present, showing counts of probationers in local jails awaiting placement in probation detention centers, probation RSAT centers, and probation boot camps.
<b>MSR-03</b>	State inmates in jail. Weekly graph from March 20, 2009 to present, showing counts of state inmates in local jails awaiting placement in state prison facilities – including those who have not yet been assigned to a diagnostic center, those whose transportation has been delayed for some reason, and those who are ready to be picked up.
<b>MSR-04</b>	Female state inmates in jail. Weekly graph from March 20, 2009 to present, showing counts of female state inmates awaiting placement in a state prison for females.
<b>MSR-05</b>	52-week table: housed offenders. Data for each of the past 52 weeks, showing total prison inmates, parolees in revocation centers, probationers in RSAT/boot camp/detention centers, inmate jail backlog, probationers in jail waiting for facilities, with subtotals.
<b>MSR-06</b>	52-week table: state prisoners. Data for each of the past 52 weeks, showing inmates in state prisons, transition centers, county prisons, pre-release centers, private prisons, and inmate boot camps, with subtotals.
<b>MSR-07</b>	52-week table: waiting in jail. Data for each of the past 52 weeks, showing probationers waiting for detention centers, RSAT, and boot camp; and state prisoners not yet assigned to diagnostic centers, in admission process, with delayed transport, and ready for pickup, with subtotals.

## Releases by clemency and maxout, Jan-2000 to Apr-2026

There are two main ways of being released from a Georgia prison -- by actions of the Board of Pardons and Paroles ("Clemencies") and by service of 100% of the court-ordered sentences ("Maxouts").

"Clemency" includes paroles, reprieves, commutations, and transfer to other confinement prior to expiration of sentence. "Other Releases" includes deaths, and sentences modified or overturned by the courts. Clemencies and maxouts may or may not be followed by periods of probation.



A. Clemency with probation to follow	RISES BY	54	from	448	to	502
B. Clemency only	falls by	8	from	81	to	73
C. Maxout with probation to follow	falls by	11	from	570	to	559
D. Maxout only (unsupervised)	RISES BY	3	from	53	to	56
E. Other releases	falls by	9	from	28	to	19
F. Total releases (A+B+C+D+E)	RISES BY	29	from	1180	to	1209
<b>G. Total clemencies (A+B) (top line)</b>	<b>RISES BY</b>	<b>46</b>	<b>from</b>	<b>529</b>	<b>to</b>	<b>575</b>
<b>H. Total maxouts (C+D) (bottom line)</b>	<b>falls by</b>	<b>8</b>	<b>from</b>	<b>623</b>	<b>to</b>	<b>615</b>
I. % of releases by clemency (G/F)	RISES BY	2.73%	from	44.83%	to	47.56%
J. % of releases by maxout (H/F)	falls by	1.93%	from	52.8%	to	50.87%
K. Supervised releases (A+B+C)	RISES BY	35	from	1099	to	1134
L. % unsupervised releases (D/F)	RISES BY	.14%	from	4.49%	to	4.63%
M. % supervised releases (K/F)	RISES BY	.66%	from	93.14%	to	93.8%

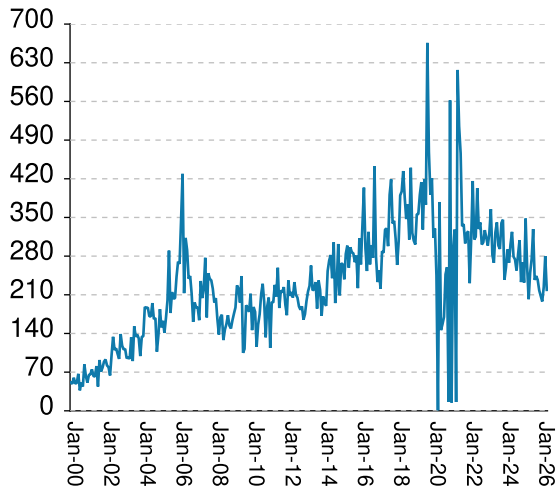
## Monthly releases from prison by type of release, for the past 48 months

Month	A Clemency + Prob	B Clemency Only	C Maxout + Prob	D Maxout Only	E Other rels	F Total Releases (A+B+C+D+E)	G Total Clemency (A+B)	H Total Maxout (C+D)	I Percent Clemency (G/F)	J Percent Maxout (H/F)
May-22	439	79	539	64	26	1147	518	603	45.16%	52.57%
Jun-22	454	66	527	56	21	1124	520	583	46.26%	51.87%
Jul-22	439	71	529	60	14	1113	510	589	45.82%	52.92%
Aug-22	424	66	615	69	21	1195	490	684	41.00%	57.24%
Sep-22	397	78	548	60	18	1101	475	608	43.14%	55.22%
Oct-22	374	61	604	61	23	1123	435	665	38.74%	59.22%
Nov-22	367	53	521	57	19	1017	420	578	41.30%	56.83%
Dec-22	342	60	547	62	28	1039	402	609	38.69%	58.61%
Jan-23	375	51	525	60	23	1034	426	585	41.20%	56.58%
Feb-23	387	47	491	54	17	996	434	545	43.57%	54.72%
Mar-23	376	56	574	62	24	1092	432	636	39.56%	58.24%
Apr-23	392	55	573	53	26	1099	447	626	40.67%	56.96%
May-23	326	48	929	132	20	1455	374	1061	25.70%	72.92%
Jun-23	460	73	567	59	19	1178	533	626	45.25%	53.14%
Jul-23	459	74	508	51	25	1117	533	559	47.72%	50.04%
Aug-23	401	53	589	54	22	1119	454	643	40.57%	57.46%
Sep-23	402	56	576	44	10	1088	458	620	42.10%	56.99%
Oct-23	362	52	577	51	31	1073	414	628	38.58%	58.53%
Nov-23	354	57	491	67	19	988	411	558	41.60%	56.48%
Dec-23	366	46	554	57	21	1044	412	611	39.46%	58.52%
Jan-24	368	61	599	62	32	1122	429	661	38.24%	58.91%
Feb-24	396	51	577	60	24	1108	447	637	40.34%	57.49%
Mar-24	379	64	584	66	20	1113	443	650	39.80%	58.40%
Apr-24	409	48	531	53	33	1074	457	584	42.55%	54.38%
May-24	426	56	605	77	26	1190	482	682	40.50%	57.31%
Jun-24	412	61	575	61	23	1132	473	636	41.78%	56.18%
Jul-24	398	62	627	68	38	1193	460	695	38.56%	58.26%
Aug-24	381	67	640	58	19	1165	448	698	38.45%	59.91%
Sep-24	379	65	560	65	34	1103	444	625	40.25%	56.66%
Oct-24	399	59	632	54	28	1172	458	686	39.08%	58.53%
Nov-24	388	54	591	55	23	1111	442	646	39.78%	58.15%
Dec-24	392	57	555	49	33	1086	449	604	41.34%	55.62%
Jan-25	416	61	560	49	30	1116	477	609	42.74%	54.57%
Feb-25	399	57	546	60	17	1079	456	606	42.26%	56.16%
Mar-25	432	55	593	53	23	1156	487	646	42.13%	55.88%
Apr-25	409	62	555	45	18	1089	471	600	43.25%	55.10%
May-25	422	46	550	55	26	1099	468	605	42.58%	55.05%
Jun-25	433	61	580	35	36	1145	494	615	43.14%	53.71%
Jul-25	491	60	621	61	33	1266	551	682	43.52%	53.87%
Aug-25	431	72	602	58	16	1179	503	660	42.66%	55.98%
Sep-25	405	58	576	41	26	1106	463	617	41.86%	55.79%
Oct-25	519	86	592	51	26	1274	605	643	47.49%	50.47%
Nov-25	407	52	582	40	22	1103	459	622	41.61%	56.39%
Dec-25	443	59	520	58	28	1108	502	578	45.31%	52.17%
Jan-26	426	72	572	52	35	1157	498	624	43.04%	53.93%
Feb-26	428	62	518	58	27	1093	490	576	44.83%	52.70%
Mar-26	448	81	570	53	28	1180	529	623	44.83%	52.80%
Apr-26	502	73	559	56	19	1209	575	615	47.56%	50.87%

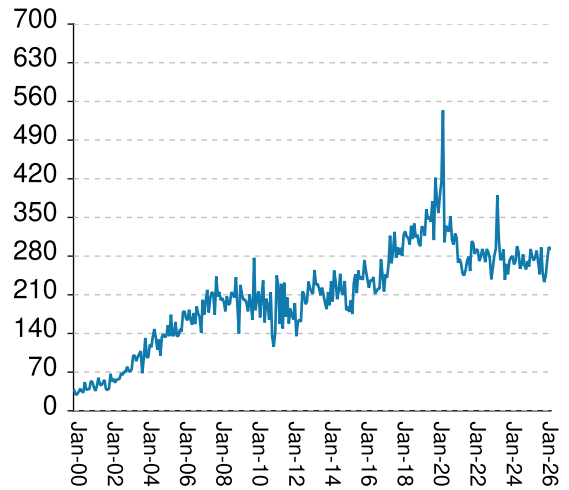
# Inmates with meth crimes, by month, Jan-2000 to Apr-2026

Methamphetamine is one of the most addictive drugs ever known. At first it induces intense euphoria, but with continued use causes severe depression and physical deterioration, including the dental catastrophe known as "meth mouth". Georgia's meth epidemic began in the early 2000s and has seen continued growth over the last 2 decades, with continued expansion beyond the originally predominate use by northern county white males.

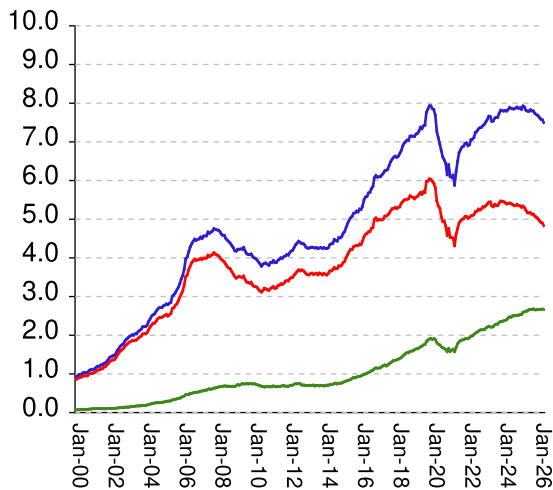
### Admissions



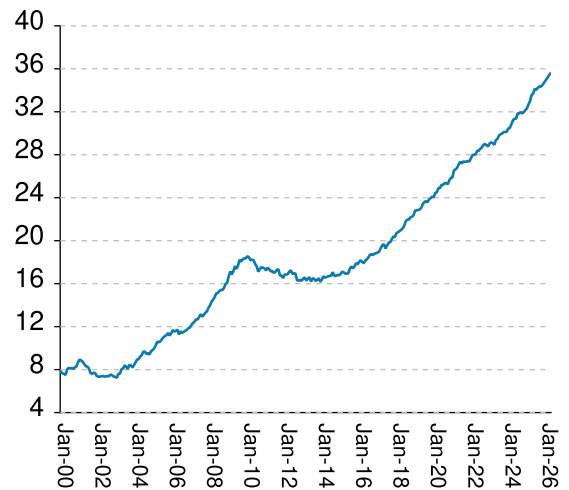
### Releases



### Population x1000



### Percent Non-White

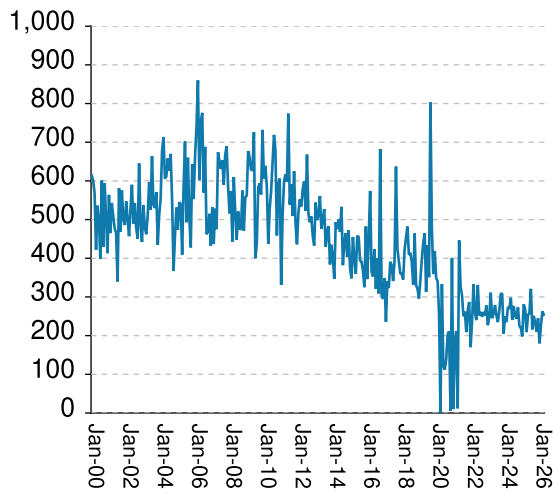


Methamphetamine admissions	falls by	61	from	280	to	219
Methamphetamine releases	falls by	2	from	296	to	294
<b>Methamphetamine population</b>	<b>falls by</b>	<b>75</b>	<b>from</b>	<b>7571</b>	<b>to</b>	<b>7496</b>
<b>Meth white population</b>	<b>falls by</b>	<b>70</b>	<b>from</b>	<b>4901</b>	<b>to</b>	<b>4831</b>
<b>Meth non-white population</b>	<b>falls by</b>	<b>11</b>	<b>from</b>	<b>2676</b>	<b>to</b>	<b>2665</b>
Percent meth inmates who are non-white	RISES BY	.2%	from	35.35%	to	35.55%

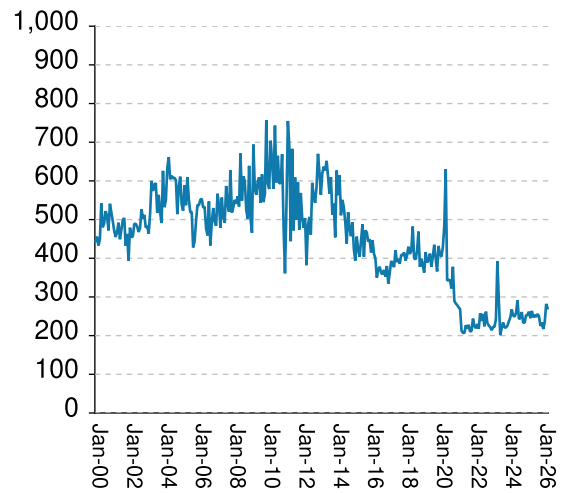
# Non-violent first-incarcerants, by month, Jan-2000 to Apr-2026

Historically, about one in six Georgia prison inmates has been a first-time incarcerant with a non-violent crime. In 2012 Georgia passed HB1176, which aimed to curb the growth of prison population by steering the least dangerous, least hardened offenders away from prison through pre-trial intervention, diversion, drug courts and treatment programs, and raising the dollar thresholds that define property felonies. The expectation is that over time, these measures will reduce the percentage of first-time non-violent incarcerants in prison.

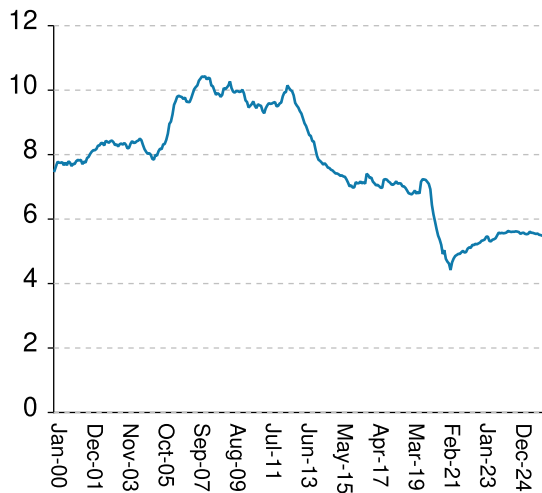
### Admissions



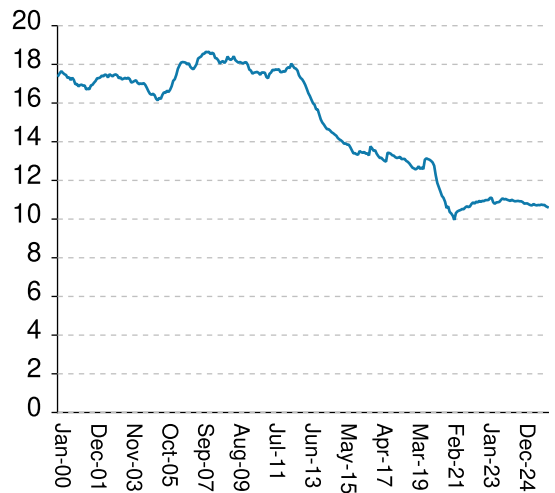
### Releases



### Population x1000



### % Total Population

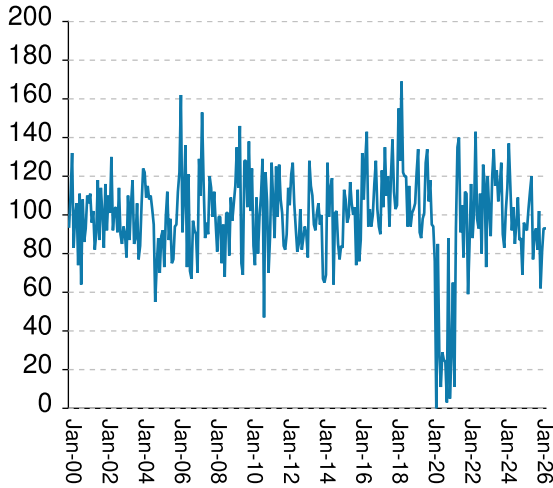


Non-viol/1st-Incar admissions	falls by	9	from	263	to	254
Non-viol/1st-Incar releases	falls by	11	from	282	to	271
Non-viol/1st-Incar population	falls by	17	from	5485	to	5468
Non-viol/1st-Incar % of total population	falls by	.04%	from	10.66%	to	10.62%

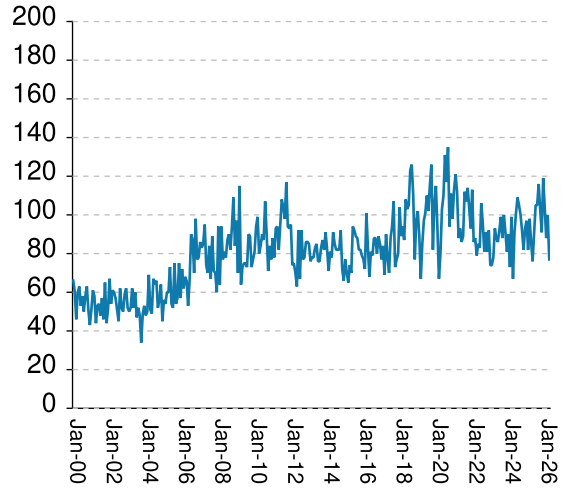
# 'Seven Deadly Sin', by month, Jan-2000 to Apr-2026

Tough legislation in 1995 imposed mandatory ten-year minimum terms for kidnapping, armed robbery, rape, aggravated sodomy, aggravated sexual battery, and aggravated child molestation, and a minimum of 25 years for murder. A second conviction resulted in life without parole. As predicted, longer prison terms caused population to climb steeply for about a decade. It then began to level off, as releases started catching up with admissions. The 2008 dip in percentage of total population (bottom right) was caused by the surge of methamphetamine convictions (Page MO-03). Note: these graphs include inmates convicted before 1995.

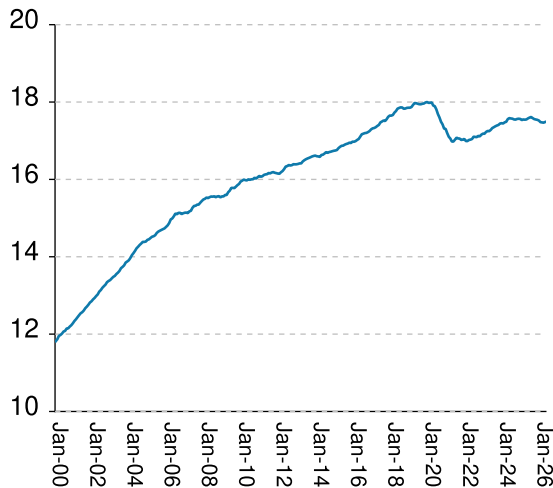
### Admissions



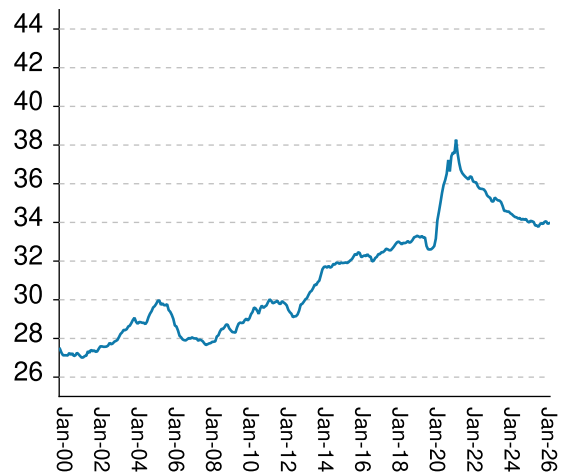
### Releases



### Population x1000



### % Total Population



"Seven Deadly Sin" admissions	...	...	...	93	at	93
"Seven Deadly Sin" releases	falls by	23	from	100	to	77
"Seven Deadly Sin" population	RISES BY	16	from	17467	to	17483
"Seven Deadly Sin" % of total population	RISES BY	.03%	from	33.93%	to	33.96%

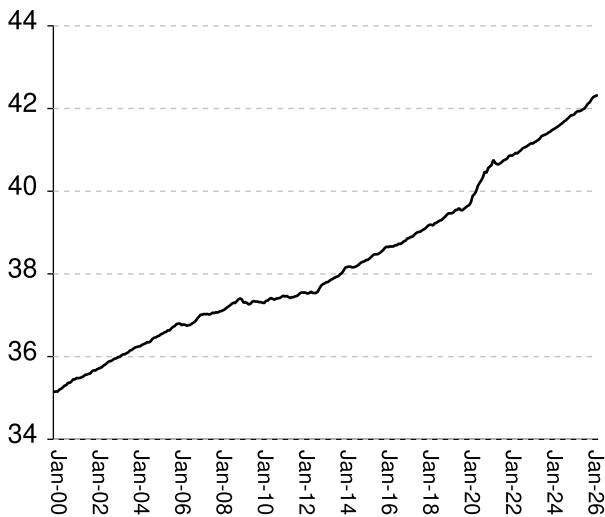
## Inmate subpopulation counts and percentages, for the past 48 months

Month	Methamphetamine						1st Incar Non-Violent		Seven Deadly Sins	
	Total Number	Total Percent	White Number	White Percent	Non White Number	Non White Percent	Number	Percent	Number	Percent
May-22	7116	15.06%	5122	71.98%	2018	28.36%	5105	10.80%	17045	36.07%
Jun-22	7241	15.18%	5196	71.76%	2054	28.37%	5198	10.90%	17105	35.87%
Jul-22	7277	15.22%	5206	71.54%	2078	28.56%	5194	10.86%	17097	35.76%
Aug-22	7333	15.33%	5259	71.72%	2103	28.68%	5231	10.94%	17094	35.74%
Sep-22	7365	15.37%	5240	71.15%	2131	28.93%	5218	10.89%	17124	35.73%
Oct-22	7377	15.39%	5269	71.42%	2139	29.00%	5246	10.94%	17113	35.70%
Nov-22	7417	15.38%	5318	71.70%	2142	28.88%	5272	10.93%	17158	35.59%
Dec-22	7454	15.36%	5315	71.30%	2145	28.78%	5328	10.98%	17182	35.40%
Jan-23	7515	15.45%	5352	71.22%	2183	29.05%	5341	10.98%	17181	35.32%
Feb-23	7579	15.52%	5389	71.10%	2210	29.16%	5367	10.99%	17227	35.27%
Mar-23	7663	15.59%	5441	71.00%	2228	29.07%	5455	11.10%	17251	35.09%
Apr-23	7652	15.56%	5444	71.14%	2214	28.93%	5457	11.10%	17247	35.08%
May-23	7530	15.38%	5350	71.05%	2211	29.36%	5321	10.87%	17279	35.29%
Jun-23	7543	15.33%	5325	70.60%	2224	29.48%	5309	10.79%	17327	35.20%
Jul-23	7611	15.41%	5385	70.75%	2267	29.79%	5360	10.86%	17350	35.14%
Aug-23	7634	15.44%	5356	70.16%	2283	29.91%	5375	10.87%	17374	35.13%
Sep-23	7635	15.39%	5351	70.09%	2288	29.97%	5405	10.89%	17393	35.05%
Oct-23	7738	15.49%	5422	70.07%	2330	30.11%	5492	10.99%	17408	34.85%
Nov-23	7818	15.51%	5467	69.93%	2355	30.12%	5580	11.07%	17444	34.60%
Dec-23	7808	15.48%	5459	69.92%	2353	30.14%	5559	11.02%	17453	34.59%
Jan-24	7796	15.44%	5450	69.91%	2373	30.44%	5572	11.04%	17446	34.56%
Feb-24	7810	15.44%	5430	69.53%	2383	30.51%	5560	11.00%	17475	34.56%
Mar-24	7798	15.37%	5397	69.21%	2404	30.83%	5566	10.97%	17490	34.47%
Apr-24	7834	15.35%	5405	68.99%	2444	31.20%	5583	10.94%	17560	34.42%
May-24	7888	15.40%	5417	68.67%	2474	31.36%	5632	11.00%	17584	34.34%
Jun-24	7869	15.35%	5405	68.69%	2467	31.35%	5614	10.95%	17575	34.28%
Jul-24	7855	15.31%	5380	68.49%	2501	31.84%	5600	10.92%	17570	34.26%
Aug-24	7852	15.30%	5353	68.17%	2501	31.85%	5608	10.93%	17550	34.20%
Sep-24	7871	15.36%	5357	68.06%	2515	31.95%	5607	10.94%	17546	34.23%
Oct-24	7897	15.35%	5381	68.14%	2516	31.86%	5619	10.92%	17563	34.14%
Nov-24	7867	15.31%	5352	68.03%	2515	31.97%	5611	10.92%	17568	34.18%
Dec-24	7880	15.32%	5346	67.84%	2534	32.16%	5597	10.88%	17563	34.14%
Jan-25	7841	15.28%	5307	67.68%	2534	32.32%	5542	10.80%	17535	34.18%
Feb-25	7928	15.38%	5337	67.32%	2591	32.68%	5570	10.81%	17549	34.05%
Mar-25	7896	15.30%	5303	67.16%	2604	32.98%	5577	10.81%	17544	34.00%
Apr-25	7818	15.18%	5229	66.88%	2624	33.56%	5541	10.76%	17550	34.08%
May-25	7796	15.10%	5169	66.30%	2627	33.70%	5531	10.72%	17577	34.06%
Jun-25	7793	15.07%	5162	66.24%	2660	34.13%	5542	10.71%	17598	34.02%
Jul-25	7832	15.05%	5166	65.96%	2666	34.04%	5609	10.78%	17613	33.84%
Aug-25	7800	15.01%	5130	65.77%	2670	34.23%	5577	10.73%	17585	33.84%
Sep-25	7797	14.99%	5128	65.77%	2679	34.36%	5572	10.71%	17559	33.77%
Oct-25	7738	14.95%	5080	65.65%	2658	34.35%	5555	10.73%	17549	33.90%
Nov-25	7706	14.92%	5052	65.56%	2657	34.48%	5540	10.72%	17540	33.96%
Dec-25	7681	14.87%	5017	65.32%	2665	34.70%	5551	10.75%	17523	33.92%
Jan-26	7635	14.86%	4969	65.08%	2666	34.92%	5514	10.73%	17481	34.03%
Feb-26	7587	14.79%	4922	64.87%	2665	35.13%	5504	10.73%	17474	34.06%
Mar-26	7571	14.71%	4901	64.73%	2676	35.35%	5485	10.66%	17467	33.93%
Apr-26	7496	14.56%	4831	64.45%	2665	35.55%	5468	10.62%	17483	33.96%

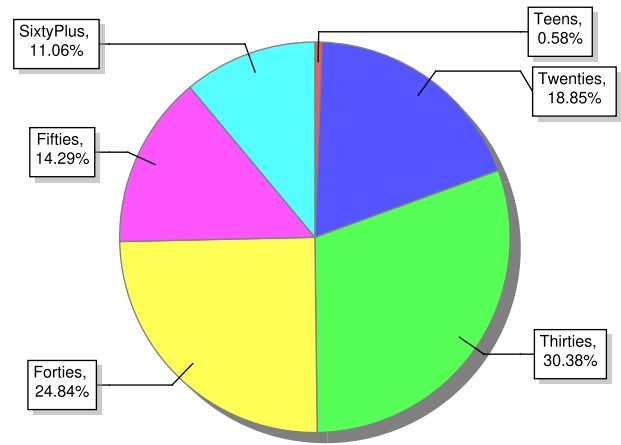
# Overview of inmate age statistics, Jan-2000 to Apr-2026

The "aging inmate population" is a concern in correctional systems throughout America, including Georgia. Here, the increase in inmate age is the result of several factors. Teenagers have been steered away from prison by increased usage of probation and other alternatives, at least for their first convictions. And there has been a surge of middle-aged male sex offenders due to the expanding "It's OK to tell" ethos. But most importantly, more severe sentence lengths and release policies have greatly increased the length of time that most offenders -- especially violent ones -- spend in prison, thereby increasing their average age.

### Average age since 2000



### Current Age



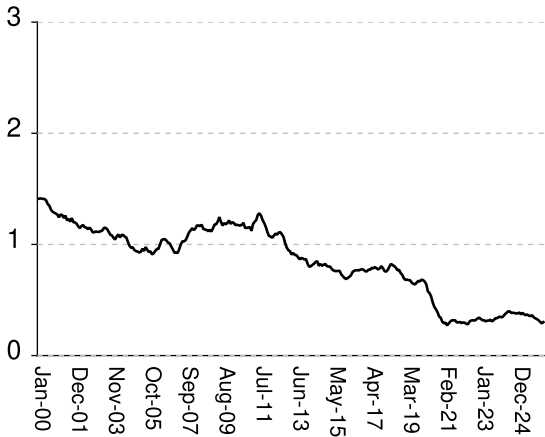
Apr-2026

Average age of active inmates	RISES BY	.01	from	42.3	to	42.31
Number in their teens	RISES BY	11	from	290	to	301
Percentage in their teens	RISES BY	.02%	from	.56%	to	.58%
Number in their twenties	RISES BY	19	from	9,687	to	9,706
Percentage in their twenties	RISES BY	.03%	from	18.82%	to	18.85%
Number in their thirties	falls by	64	from	15,703	to	15,639
Percentage in their thirties	falls by	.12%	from	30.5%	to	30.38%
Number in their forties	RISES BY	7	from	12,781	to	12,788
Percentage in their forties	RISES BY	.01%	from	24.83%	to	24.84%
Number in their fifties	RISES BY	19	from	7,336	to	7,355
Percentage in their fifties	RISES BY	.04%	from	14.25%	to	14.29%
Number age sixty and up	falls by	7	from	5,701	to	5,694
Percentage age sixty and up	falls by	.01%	from	11.07%	to	11.06%

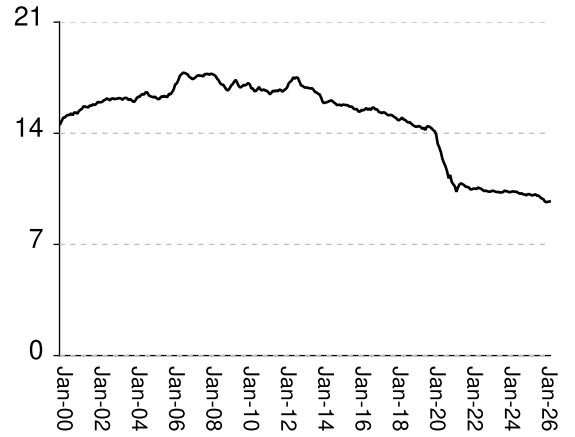
# Monthly counts of inmates by age group, Jan-2000 to Apr-2026

Y-axis of Twenties/Thirties/Forties/Fifties runs from 0 to 21,000. Y-axis of Teens/Sixty+ runs from 0 to 3,000.

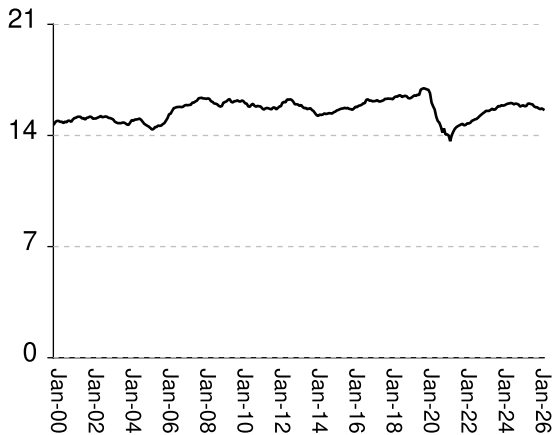
### Teens x 1000



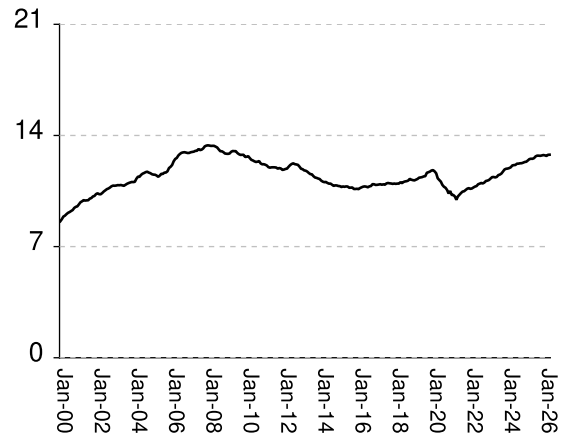
### Twenties x 1000



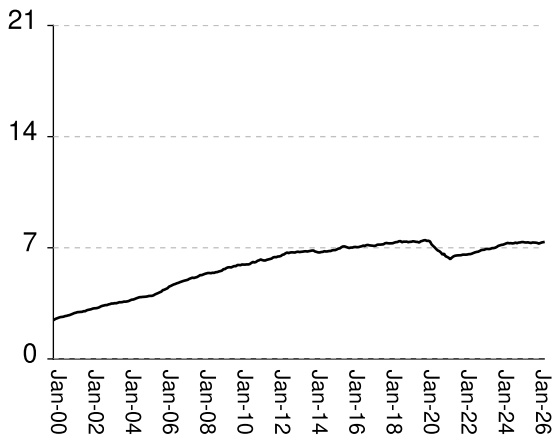
### Thirties x 1000



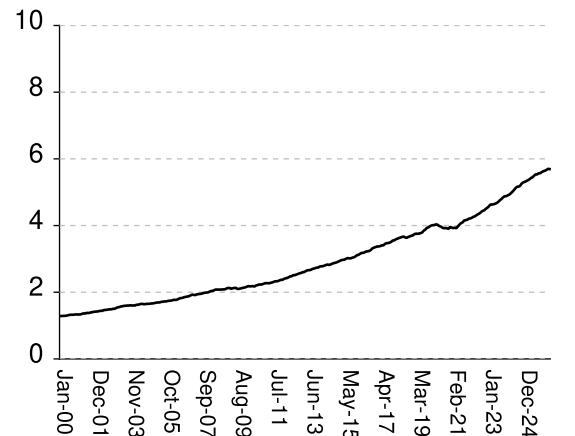
### Forties x 1000



### Fifties x 1000



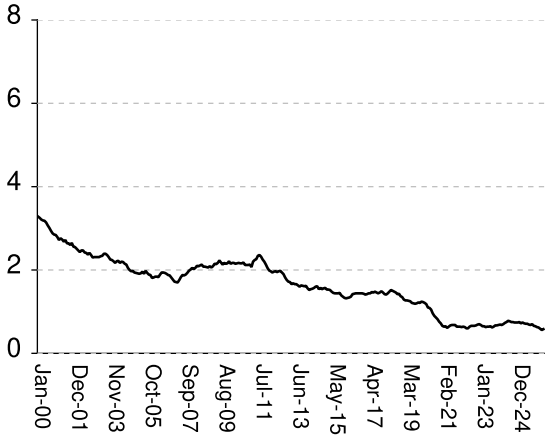
### Sixty & Up x 1000



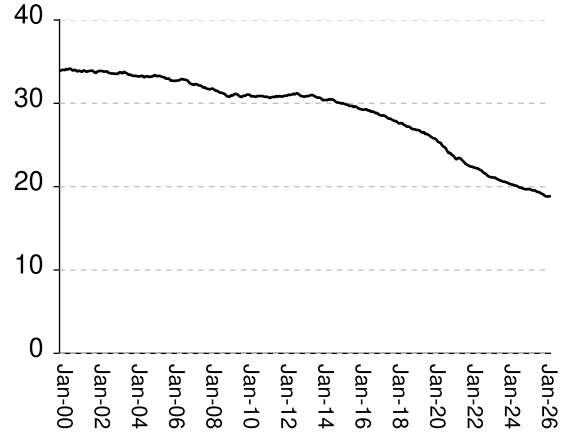
# Monthly percentages of inmates by age group, Jan-2000 to Apr-2026

Y-axis of Twenties/Thirties/Forties/Fifties runs from 0% to 40%. Y-axis of Teens/Sixty+ runs from 0% to 8%

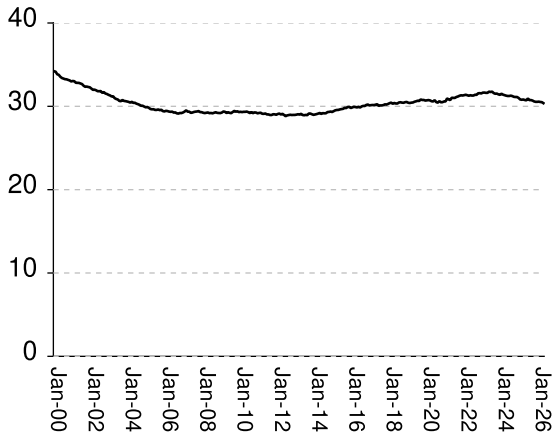
### Teens (%)



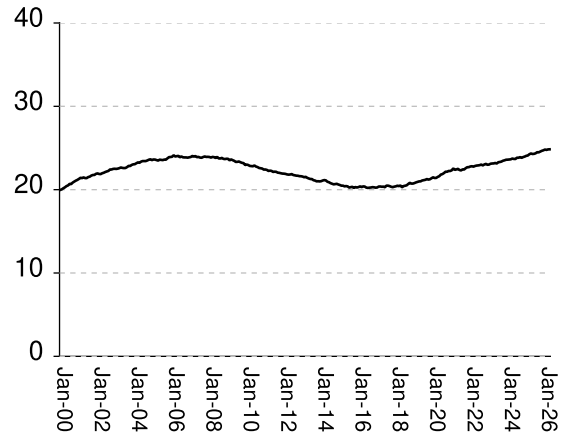
### Twenties (%)



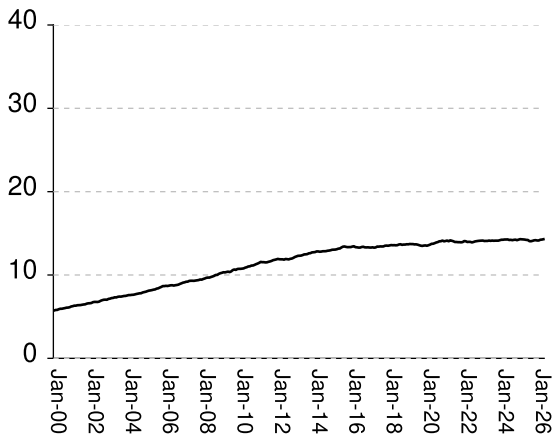
### Thirties (%)



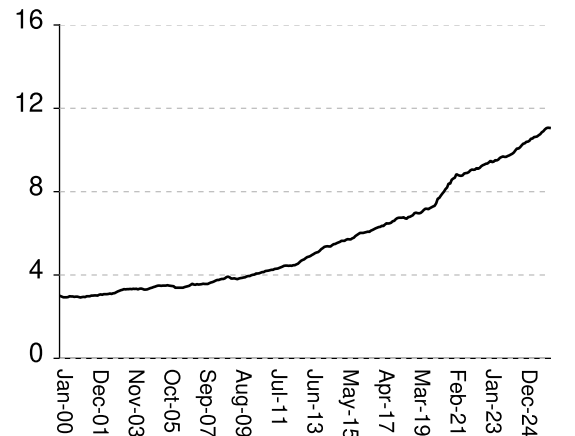
### Forties (%)



### Fifties (%)



### Sixty & Up (%)

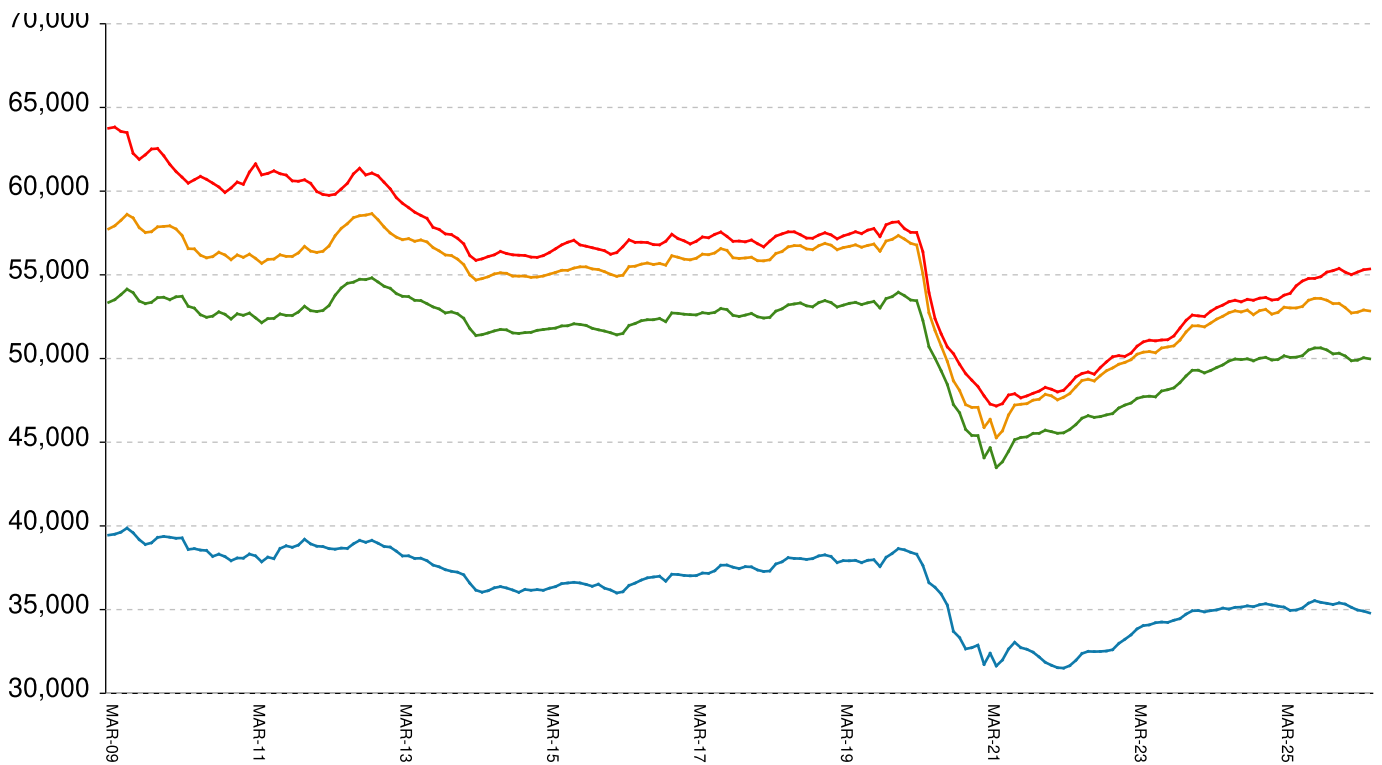


## Inmate counts & percentages by age, for past 48 months

Month	Avg Age	Teens		Twenties		Thirties		Forties		Fifties		Sixty & Up	
		Number	Percent	Number	Percent	Number	Percent	Number	Percent	Number	Percent	Number	Percent
May-22	40.93	282	0.60%	10494	22.21%	14806	31.33%	10814	22.89%	6601	13.97%	4313	9.13%
Jun-22	40.91	307	0.64%	10580	22.18%	14922	31.29%	10925	22.91%	6633	13.91%	4340	9.10%
Jul-22	40.96	315	0.66%	10535	22.03%	14966	31.30%	10966	22.94%	6675	13.96%	4368	9.14%
Aug-22	40.99	318	0.66%	10503	21.96%	15017	31.39%	11007	23.01%	6711	14.03%	4409	9.22%
Sep-22	41.04	315	0.66%	10421	21.75%	15039	31.38%	10978	22.91%	6739	14.06%	4441	9.27%
Oct-22	41.06	322	0.67%	10363	21.62%	15125	31.56%	11032	23.02%	6754	14.09%	4459	9.30%
Nov-22	41.07	334	0.69%	10386	21.54%	15226	31.58%	11134	23.09%	6801	14.11%	4504	9.34%
Dec-22	41.1	341	0.70%	10346	21.32%	15310	31.55%	11156	22.99%	6853	14.12%	4537	9.35%
Jan-23	41.13	329	0.68%	10324	21.22%	15390	31.64%	11195	23.01%	6872	14.13%	4580	9.41%
Feb-23	41.16	318	0.65%	10326	21.14%	15458	31.65%	11287	23.11%	6876	14.08%	4631	9.48%
Mar-23	41.15	318	0.65%	10379	21.11%	15546	31.62%	11375	23.14%	6926	14.09%	4631	9.42%
Apr-23	41.19	308	0.63%	10371	21.09%	15547	31.62%	11383	23.15%	6929	14.09%	4639	9.44%
May-23	41.21	314	0.64%	10326	21.09%	15547	31.76%	11358	23.20%	6920	14.13%	4655	9.51%
Jun-23	41.24	315	0.64%	10299	20.92%	15611	31.72%	11389	23.14%	6939	14.10%	4677	9.50%
Jul-23	41.27	322	0.65%	10308	20.88%	15682	31.76%	11501	23.29%	6979	14.13%	4712	9.54%
Aug-23	41.33	308	0.62%	10264	20.75%	15622	31.59%	11536	23.32%	6980	14.11%	4758	9.62%
Sep-23	41.35	318	0.64%	10279	20.71%	15639	31.51%	11600	23.37%	7005	14.12%	4794	9.66%
Oct-23	41.37	335	0.67%	10291	20.60%	15751	31.53%	11727	23.47%	7055	14.12%	4842	9.69%
Nov-23	41.39	336	0.67%	10385	20.60%	15852	31.44%	11857	23.52%	7121	14.12%	4878	9.67%
Dec-23	41.42	345	0.68%	10351	20.52%	15831	31.38%	11903	23.59%	7152	14.18%	4881	9.67%
Jan-24	41.44	350	0.69%	10335	20.47%	15906	31.51%	11915	23.60%	7183	14.23%	4902	9.71%
Feb-24	41.48	344	0.68%	10286	20.34%	15877	31.40%	11945	23.62%	7195	14.23%	4927	9.74%
Mar-24	41.5	353	0.70%	10300	20.30%	15899	31.34%	11993	23.64%	7233	14.26%	4964	9.78%
Apr-24	41.52	371	0.73%	10339	20.26%	15959	31.28%	12110	23.73%	7275	14.26%	5010	9.82%
May-24	41.55	384	0.75%	10334	20.18%	16000	31.24%	12133	23.69%	7306	14.27%	5061	9.88%
Jun-24	41.58	398	0.78%	10319	20.13%	16016	31.24%	12141	23.68%	7281	14.20%	5116	9.98%
Jul-24	41.61	397	0.77%	10307	20.10%	16044	31.28%	12220	23.83%	7293	14.22%	5163	10.07%
Aug-24	41.65	385	0.75%	10238	19.95%	16024	31.23%	12225	23.83%	7275	14.18%	5167	10.07%
Sep-24	41.69	385	0.75%	10192	19.89%	15958	31.14%	12248	23.90%	7286	14.22%	5190	10.13%
Oct-24	41.71	383	0.74%	10221	19.87%	16006	31.12%	12253	23.82%	7323	14.24%	5257	10.22%
Nov-24	41.75	379	0.74%	10155	19.76%	15992	31.12%	12286	23.91%	7289	14.18%	5293	10.30%
Dec-24	41.79	380	0.74%	10146	19.72%	15950	31.01%	12330	23.97%	7326	14.24%	5310	10.32%
Jan-25	41.83	387	0.75%	10093	19.67%	15816	30.83%	12344	24.06%	7336	14.30%	5330	10.39%
Feb-25	41.84	371	0.72%	10164	19.72%	15870	30.79%	12424	24.10%	7358	14.28%	5359	10.40%
Mar-25	41.86	384	0.74%	10165	19.70%	15899	30.82%	12509	24.25%	7360	14.27%	5385	10.44%
Apr-25	41.91	371	0.72%	10114	19.64%	15841	30.76%	12535	24.34%	7338	14.25%	5426	10.54%
May-25	41.94	364	0.71%	10087	19.54%	15854	30.72%	12530	24.28%	7332	14.21%	5447	10.55%
Jun-25	41.93	369	0.71%	10126	19.58%	16005	30.94%	12572	24.30%	7344	14.20%	5493	10.62%
Jul-25	41.95	359	0.69%	10150	19.50%	16005	30.75%	12680	24.36%	7319	14.06%	5534	10.63%
Aug-25	41.98	355	0.68%	10067	19.37%	15976	30.75%	12728	24.49%	7302	14.05%	5534	10.65%
Sep-25	42	363	0.70%	10069	19.36%	15959	30.69%	12728	24.48%	7333	14.10%	5567	10.71%
Oct-25	42.06	344	0.66%	9968	19.26%	15831	30.59%	12717	24.57%	7329	14.16%	5570	10.76%
Nov-25	42.12	335	0.65%	9890	19.15%	15777	30.54%	12740	24.66%	7323	14.18%	5605	10.85%
Dec-25	42.15	328	0.63%	9850	19.07%	15775	30.54%	12767	24.72%	7306	14.14%	5629	10.90%
Jan-26	42.22	317	0.62%	9701	18.88%	15700	30.56%	12746	24.81%	7265	14.14%	5645	10.99%
Feb-26	42.28	303	0.59%	9662	18.83%	15658	30.52%	12710	24.77%	7300	14.23%	5669	11.05%
Mar-26	42.3	290	0.56%	9687	18.82%	15703	30.50%	12781	24.83%	7336	14.25%	5701	11.07%
Apr-26	42.31	301	0.58%	9706	18.85%	15639	30.38%	12788	24.84%	7355	14.29%	5694	11.06%

# All housed offenders under GDC jurisdiction

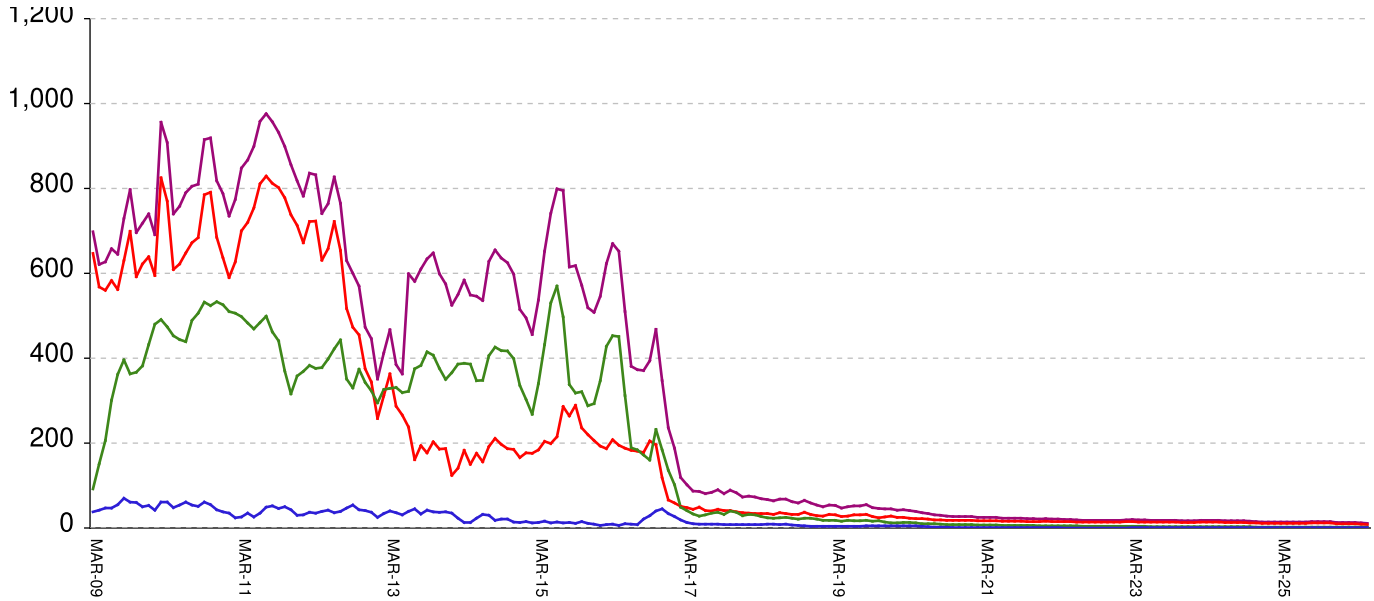
March 20, 2009 through May 15, 2026



<b>All in bed + probs in jail + backlog</b>	<b>RISES BY</b>	<b>38</b>	<b>from</b>	<b>55,304</b>	<b>to</b>	<b>55,342</b>
Probationers in jail	...	...	...	11	at	11
Inmate jail backlog	RISES BY	47	from	2,483	to	2,530
<b>All in beds: inmate + Prob + parole</b>	<b>falls by</b>	<b>9</b>	<b>from</b>	<b>52,810</b>	<b>to</b>	<b>52,801</b>
Total probationers in beds	falls by	7	from	2,856	to	2,849
Probation detention centers	falls by	7	from	1,379	to	1,372
Probation boot camps	falls by	...	from		to	
Probation RSAT	...	...	...	1,477	at	1,477
Parole revocation centers	falls by	...	from		to	
<b>All in inmate beds: state + other</b>	<b>falls by</b>	<b>2</b>	<b>from</b>	<b>49,954</b>	<b>to</b>	<b>49,952</b>
Other inmate facilities:	RISES BY	22	from	15,169	to	15,191
Inmate boot camps	...	...	...	0	at	0
Private prisons	RISES BY	10	from	8,098	to	8,108
County prisons	RISES BY	5	from	4,284	to	4,289
Transitional centers	RISES BY	7	from	2,787	to	2,794
<b>In state prisons only</b>	<b>falls by</b>	<b>24</b>	<b>from</b>	<b>34,785</b>	<b>to</b>	<b>34,761</b>

# Probationers in jail awaiting placement in facilities

March 20, 2009 through May 15, 2026



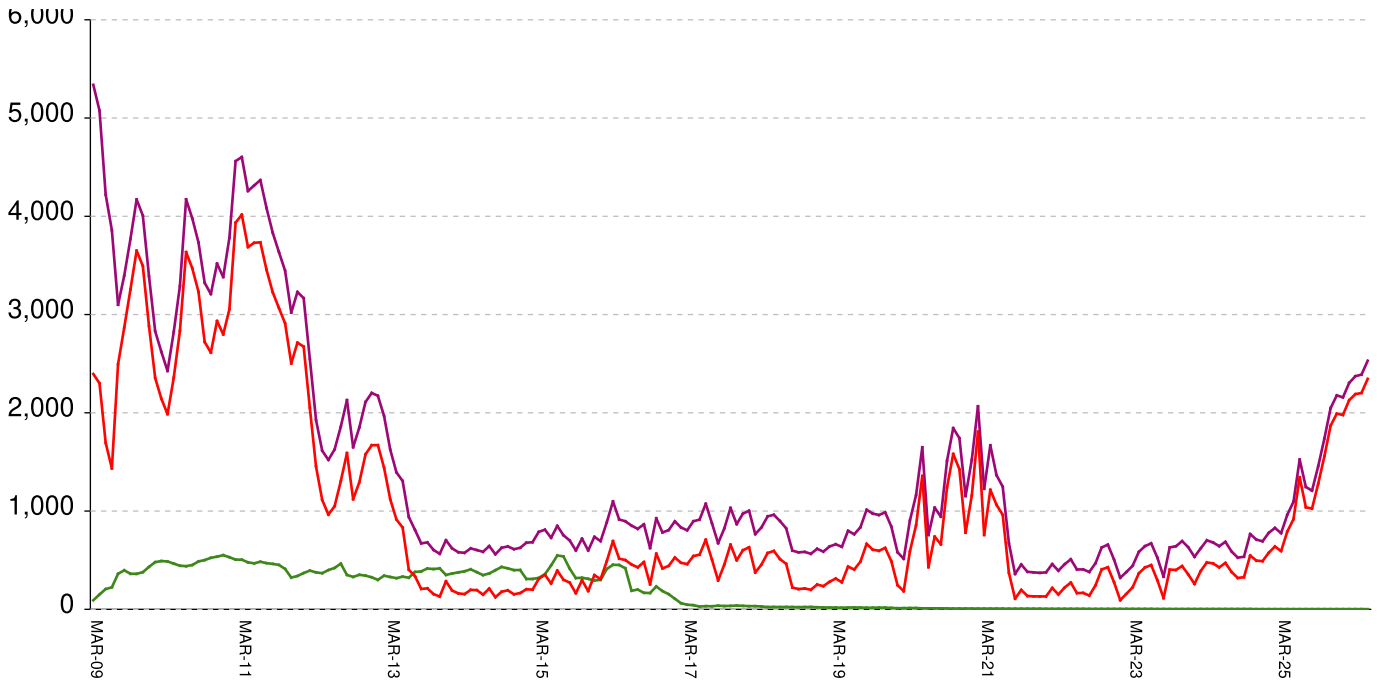
This graph shows, for each Friday since March 20 2009, the number of sentenced felony probationers who were waiting in jail for placement in facilities that GDC operates for housing probationers -- detention centers, probation residential substance abuse treatment (RSAT) centers, and probation boot camps. Counts include both those offenders sentenced directly from court, and those whose street probation was revoked.

<b>Total probationers waiting in jail</b>	...	...	...	<b>level</b>	<b>at</b>	<b>11</b>
<b>...waiting for detention centers</b>	...	...	...	<b>level</b>	<b>at</b>	<b>8</b>
<b>...waiting for probation RSAT</b>	...	...	...	<b>level</b>	<b>at</b>	<b>2</b>
<b>...waiting for probation boot camps</b>	...	...	...	<b>level</b>	<b>at</b>	<b>1</b>

The highest number of probationers waiting in jail was 994 on 05-MAR-10  
 ...highest number waiting for detention centers was 859 on 05-MAR-10  
 ...highest number waiting for probation RSAT was 592 on 10-JUL-15  
 ...highest number waiting for probation boot camps was 70 on 18-SEP-09

# State inmates in jail awaiting placement in facilities

March 20, 2009 through May 15, 2026



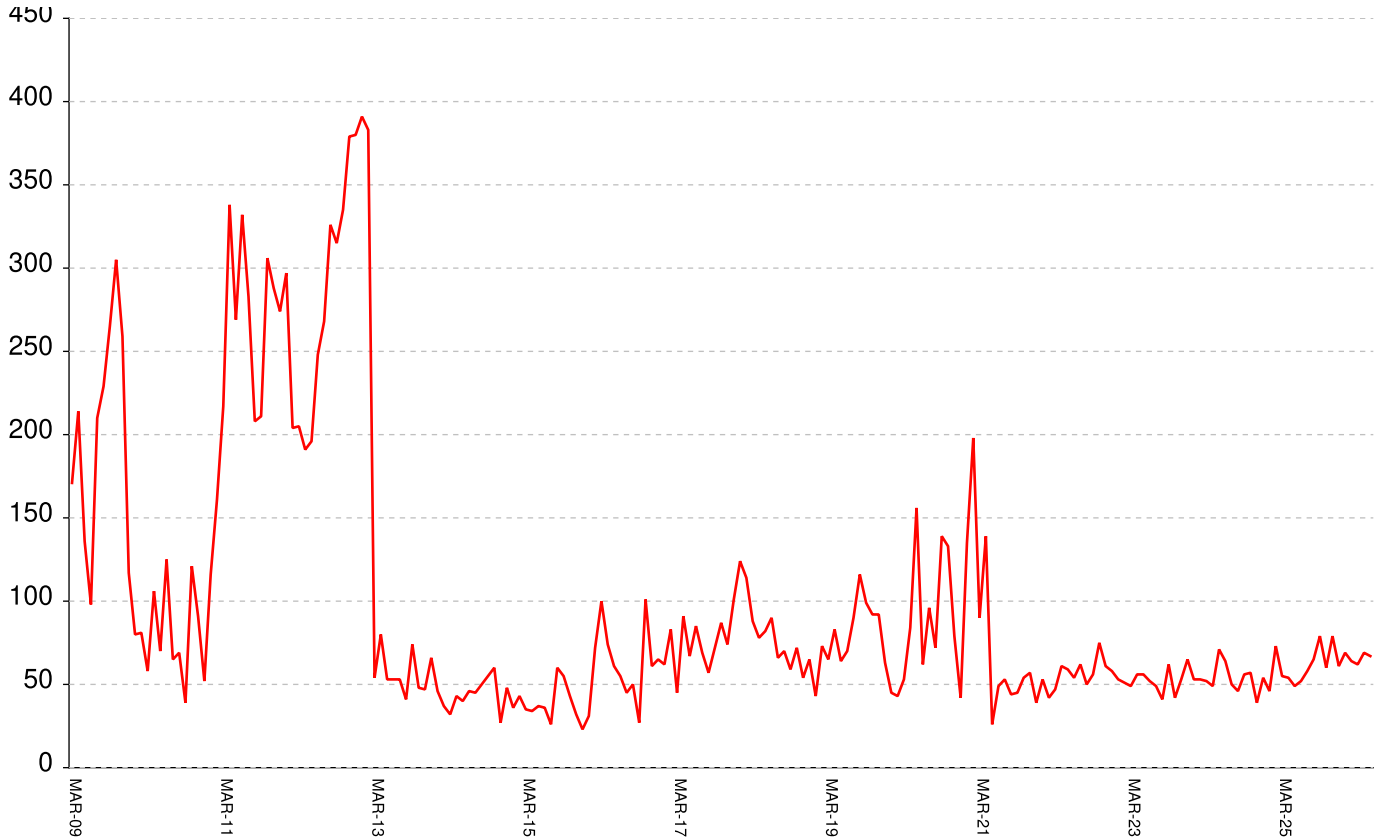
This graph shows, for each Friday since March 2009, the number of prisoners, probationers, and parolees in local jails who have been sentenced or revoked to state prison and whose documents have been received and verified by GDC. Most are almost immediately assigned to a diagnostic center, and are designated as in "admission processing". Of those a few hundred may be in the "transportation delayed" category because there is no room in the assigned diagnostic center, or because the inmate is being held for medical reasons, or for other court proceedings, or other reasons. Those remaining are "ready to be picked up".

<b>Total state inmates waiting in jail</b>	<b>RISES BY</b>	<b>47</b>	<b>from</b>	<b>2483</b>	<b>to</b>	<b>2530</b>
... not yet assigned to a diagnostic center	...	...	...	level	at	11
... total "in admission processing"	RISES BY	47	from	2472	to	2519
... with "transportation delayed"	RISES BY	2	from	171	to	173
... ready to be picked up	RISES BY	45	from	2301	to	2346

The highest number of state inmates waiting in jail was 5338 on 27-MAR-09  
 ... highest number not asg to a diagnostic center was 2881 on 12-JUN-09  
 ... highest number in admission processing was 4916 on 25-MAR-11  
 ... highest number with transportation delayed was 645 on 14-JAN-11  
 ... highest number ready to be pickup was 4435 on 25-MAR-11

# Female state inmates in jail awaiting pickup

March 20, 2009 through May 15, 2026



This graph shows, for each Friday since March 2009, the number of female state prisoners in local jails who were assigned to diagnostic centers but had not yet been picked up.

**Female state inmates in jails waiting picked up RISES BY 11 from 56 to 67**

The highest number of female inmates waiting in jail was 424 on 01-FEB-13

The lowest number of female inmates waiting in jail was 17 on 20-MAR-20

## Summary of housed prisoners, parolees, and probationers

Week Ending	Prison	Parole	Probation			Prison+parole +probation	Jail		Total
	Total inmates	Revocation centers	Prob RSAT	Boot camp	Detention		Inmate backlog	Probationers	Prison+parole +probation+jail
23-May-2025	50107		1428		1501	53036	1453	14	54503
30-May-2025	50224		1437		1509	53170	1477	14	54661
06-Jun-2025	50133		1455		1482	53070	1520	14	54604
13-Jun-2025	50139		1440		1487	53066	1524	14	54604
20-Jun-2025	50045		1425		1525	52995	1543	14	54552
27-Jun-2025	50363		1438		1512	53313	1425	14	54752
04-Jul-2025	50404		1450		1516	53370	1394	14	54778
11-Jul-2025	50529		1433		1531	53493	1191	14	54698
18-Jul-2025	50525		1462		1492	53479	1246	14	54739
25-Jul-2025	50570		1485		1514	53569	1318	14	54901
01-Aug-2025	50604		1492		1499	53595	1266	14	54875
08-Aug-2025	50586		1483		1482	53551	1112	14	54677
15-Aug-2025	50624		1487		1483	53594	1113	14	54721
22-Aug-2025	50654		1478		1463	53595	1204	15	54814
29-Aug-2025	50683		1491		1461	53635	1208	15	54858
05-Sep-2025	50623		1491		1458	53572	1164	15	54751
12-Sep-2025	50671		1504		1474	53649	1168	15	54832
19-Sep-2025	50604		1479		1477	53560	1350	15	54925
26-Sep-2025	50642		1490		1446	53578	1456	15	55049
03-Oct-2025	50592		1496		1426	53514	1545	15	55074
10-Oct-2025	50542		1502		1438	53482	1568	15	55065
17-Oct-2025	50565		1526		1461	53552	1619	15	55186
24-Oct-2025	50468		1540		1470	53478	1738	15	55231
31-Oct-2025	50381		1483		1513	53377	1861	15	55253
07-Nov-2025	50231		1503		1493	53227	1898	15	55140
14-Nov-2025	50276		1516		1485	53277	1907	15	55199
21-Nov-2025	50343		1512		1498	53353	1956	15	55324
28-Nov-2025	50271		1495		1515	53281	2047	15	55343
05-Dec-2025	50325		1472		1501	53298	1989	14	55301
12-Dec-2025	50317		1481		1499	53297	2063	13	55373
19-Dec-2025	50326		1503		1474	53303	2078	13	55394
26-Dec-2025	50291		1493		1474	53258	2177	13	55448
02-Jan-2026	50238		1475		1427	53140	2171	13	55324
09-Jan-2026	50250		1479		1429	53158	1965	13	55136
16-Jan-2026	50195		1483		1436	53114	2042	13	55169
23-Jan-2026	50092		1469		1430	52991	2157	13	55161
30-Jan-2026	49980		1465		1364	52809	2182	13	55004
06-Feb-2026	49874		1475		1390	52739	2212	13	54964
13-Feb-2026	49848		1464		1399	52711	2277	13	55001
20-Feb-2026	49860		1455		1374	52689	2304	13	55006
27-Feb-2026	49899		1447		1403	52749	2316	13	55078
06-Mar-2026	49854		1448		1412	52714	2364	13	55091
13-Mar-2026	49912		1458		1410	52780	2360	13	55153
20-Mar-2026	49857		1468		1406	52731	2430	13	55174
27-Mar-2026	49997		1464		1394	52855	2372	13	55240
03-Apr-2026	50055		1464		1396	52915	2389	13	55317
10-Apr-2026	50068		1461		1400	52929	2396	12	55337
17-Apr-2026	50094		1462		1382	52938	2357	12	55307
24-Apr-2026	49963		1478		1363	52804	2440	12	55256
01-May-2026	50043		1482		1387	52912	2481	12	55405
08-May-2026	49954		1477		1379	52810	2483	11	55304
15-May-2026	49952		1477		1372	52801	2530	11	55342

## Offenders housed in facilities for state prisoners

Week ending	In facilities other than state prisons							Total Inmates
	In state prisons	Transition centers	County prisons	Pre-rel centers	Private prisons	Inmate boot camps	Total others	
23-May-2025	35001	2577	4501		8028	0	15106	50107
30-May-2025	35065	2605	4511		8043	0	15159	50224
06-Jun-2025	35068	2587	4440		8038	0	15065	50133
13-Jun-2025	35092	2599	4416		8032	0	15047	50139
20-Jun-2025	35027	2590	4442		7986	0	15018	50045
27-Jun-2025	35203	2645	4483		8032	0	15160	50363
04-Jul-2025	35284	2652	4430		8038	0	15120	50404
11-Jul-2025	35380	2669	4436		8044	0	15149	50529
18-Jul-2025	35399	2690	4400		8036	0	15126	50525
25-Jul-2025	35464	2698	4363		8045	0	15106	50570
01-Aug-2025	35516	2709	4347		8032	0	15088	50604
08-Aug-2025	35507	2698	4347		8034	0	15079	50586
15-Aug-2025	35522	2714	4349		8039	0	15102	50624
22-Aug-2025	35539	2726	4348		8041	0	15115	50654
29-Aug-2025	35576	2714	4352		8041	0	15107	50683
05-Sep-2025	35478	2721	4352		8072	0	15145	50623
12-Sep-2025	35437	2739	4396		8099	0	15234	50671
19-Sep-2025	35399	2749	4378		8078	0	15205	50604
26-Sep-2025	35420	2732	4384		8106	0	15222	50642
03-Oct-2025	35389	2727	4371		8105	0	15203	50592
10-Oct-2025	35390	2705	4350		8097	0	15152	50542
17-Oct-2025	35402	2716	4337		8110	0	15163	50565
24-Oct-2025	35359	2744	4297		8068	0	15109	50468
31-Oct-2025	35328	2751	4237		8065	0	15053	50381
07-Nov-2025	35288	2748	4167		8028	0	14943	50231
14-Nov-2025	35293	2750	4193		8040	0	14983	50276
21-Nov-2025	35342	2756	4211		8034	0	15001	50343
28-Nov-2025	35305	2745	4168		8053	0	14966	50271
05-Dec-2025	35396	2746	4134		8049	0	14929	50325
12-Dec-2025	35370	2759	4130		8058	0	14947	50317
19-Dec-2025	35414	2755	4107		8049	1	14912	50326
26-Dec-2025	35409	2737	4082		8062	1	14882	50291
02-Jan-2026	35371	2745	4056		8065	1	14867	50238
09-Jan-2026	35363	2780	4032		8074	1	14887	50250
16-Jan-2026	35354	2745	3988		8107	1	14841	50195
23-Jan-2026	35302	2731	3960		8098	1	14790	50092
30-Jan-2026	35249	2730	3926		8074	1	14731	49980
06-Feb-2026	35179	2729	3891		8074	1	14695	49874
13-Feb-2026	35121	2721	3906		8099	1	14727	49848
20-Feb-2026	35112	2747	3898		8102	1	14748	49860
27-Feb-2026	35132	2750	3907		8109	1	14767	49899
06-Mar-2026	35106	2739	3932		8076	1	14748	49854
13-Mar-2026	35010	2751	4084		8066	1	14902	49912
20-Mar-2026	34880	2758	4146		8072	1	14977	49857
27-Mar-2026	34907	2761	4212		8116	1	15090	49997
03-Apr-2026	34940	2757	4236		8122	0	15115	50055
10-Apr-2026	34946	2755	4263		8104	0	15122	50068
17-Apr-2026	34929	2777	4289		8099	0	15165	50094
24-Apr-2026	34821	2773	4275		8094	0	15142	49963
01-May-2026	34845	2792	4297		8109	0	15198	50043
08-May-2026	34785	2787	4284		8098	0	15169	49954
15-May-2026	34761	2794	4289		8108	0	15191	49952

## Offenders waiting in local jails for state facilities

Week ending	Probationers waiting in jail				Probationers waiting in jail					Assigned females
	.. for PDCs	.. for RSAT	.. for boot camps	Total	Total backlog	Not yet assigned	In adm process	Delayed transport	Ready for pickup	
23-May-2025	11	2	1	14	1453	8	1445	181	1264	69
30-May-2025	11	2	1	14	1477	9	1468	184	1284	58
06-Jun-2025	11	2	1	14	1520	8	1512	176	1336	65
13-Jun-2025	11	2	1	14	1524	8	1516	172	1344	52
20-Jun-2025	11	2	1	14	1543	9	1534	179	1355	46
27-Jun-2025	11	2	1	14	1425	9	1416	179	1237	35
04-Jul-2025	11	2	1	14	1394	9	1385	202	1183	53
11-Jul-2025	11	2	1	14	1191	9	1182	201	981	50
18-Jul-2025	11	2	1	14	1246	9	1237	198	1039	58
25-Jul-2025	11	2	1	14	1318	9	1309	203	1106	70
01-Aug-2025	11	2	1	14	1266	9	1257	192	1065	59
08-Aug-2025	11	2	1	14	1112	11	1101	177	924	40
15-Aug-2025	11	2	1	14	1113	10	1103	174	929	51
22-Aug-2025	12	2	1	15	1204	10	1194	171	1023	60
29-Aug-2025	12	2	1	15	1208	8	1200	175	1025	65
05-Sep-2025	12	2	1	15	1164	8	1156	177	979	63
12-Sep-2025	12	2	1	15	1168	8	1160	178	982	68
19-Sep-2025	12	2	1	15	1350	8	1342	176	1166	61
26-Sep-2025	12	2	1	15	1456	9	1447	169	1278	79
03-Oct-2025	12	2	1	15	1545	8	1537	169	1368	75
10-Oct-2025	12	2	1	15	1568	8	1560	171	1389	66
17-Oct-2025	12	2	1	15	1619	9	1610	171	1439	73
24-Oct-2025	12	2	1	15	1738	8	1730	172	1558	60
31-Oct-2025	12	2	1	15	1861	10	1851	167	1684	53
07-Nov-2025	12	2	1	15	1898	11	1887	168	1719	58
14-Nov-2025	12	2	1	15	1907	12	1895	169	1726	67
21-Nov-2025	12	2	1	15	1956	11	1945	175	1770	86
28-Nov-2025	12	2	1	15	2047	11	2036	168	1868	79
05-Dec-2025	11	2	1	14	1989	10	1979	171	1808	72
12-Dec-2025	10	2	1	13	2063	11	2052	172	1880	79
19-Dec-2025	10	2	1	13	2078	11	2067	172	1895	53
26-Dec-2025	10	2	1	13	2177	11	2166	175	1991	61
02-Jan-2026	10	2	1	13	2171	11	2160	172	1988	45
09-Jan-2026	10	2	1	13	1965	10	1955	175	1780	34
16-Jan-2026	10	2	1	13	2042	9	2033	175	1858	59
23-Jan-2026	10	2	1	13	2157	9	2148	170	1978	69
30-Jan-2026	10	2	1	13	2182	9	2173	168	2005	52
06-Feb-2026	10	2	1	13	2212	9	2203	164	2039	61
13-Feb-2026	10	2	1	13	2277	9	2268	164	2104	71
20-Feb-2026	10	2	1	13	2304	9	2295	167	2128	64
27-Feb-2026	10	2	1	13	2316	9	2307	168	2139	47
06-Mar-2026	10	2	1	13	2364	9	2355	172	2183	66
13-Mar-2026	10	2	1	13	2360	10	2350	174	2176	76
20-Mar-2026	10	2	1	13	2430	10	2420	173	2247	49
27-Mar-2026	10	2	1	13	2372	10	2362	172	2190	62
03-Apr-2026	10	2	1	13	2389	10	2379	177	2202	69
10-Apr-2026	9	2	1	12	2396	11	2385	183	2202	57
17-Apr-2026	9	2	1	12	2357	11	2346	180	2166	53
24-Apr-2026	9	2	1	12	2440	13	2427	178	2249	55
01-May-2026	9	2	1	12	2481	12	2469	178	2291	67
08-May-2026	8	2	1	11	2483	11	2472	171	2301	56
15-May-2026	8	2	1	11	2530	11	2519	173	2346	67