

Friday Report - overview and contents

The pages in The Friday Report are about adult offenders in Georgia's prisons and jails. They contain statistical snapshots and trends in the populations and movements of offenders in the state prison system, on probation, on parole, and in local jails. Information comes from databases of the Georgia Department of Corrections (GDC) and the Board of Pardons and Paroles, and from data provided by local jailers. Information is summarized into tables in the GDC/Parole Data Warehouse, and is extracted into these pages each Friday. Pages are organized according to the table that supplied the data.

<p>The Monthly Research Table, named "MO_RESRCH" or simply "MO", contains data about state prisoners, grouped into statistically interesting categories. The table contains one record per month, from January 2000 to the present. Despite its being "monthly", it is updated weekly, because some data trickles in for several weeks before it becomes stable history.</p>	
Page	Content
MO-01	Clemencies and maxouts. Monthly graph from 2000 to present shows the monthly departures from prison via actions by the Georgia Parole Board (clemencies), and via service of 100% of the court ordered sentence (maxouts)
MO-02	48 months of releases. Table shows counts and percentages of releases via clemencies and maxouts, with and without probation to follow, for each of the past 48 months.
MO-03	Methamphetamine. Monthly graph from 2000 to present shows admissions, departures, population, and percent of population of inmates with a current offense of methamphetamine possession, sale, manufacturing, or trafficking, and the changing racial composition of the methamphetamine population
MO-04	Non-violent first incarcerants. Monthly graph from 2000 to present shows admissions, departures, population, and percent of population of inmates without violent or sex crimes, who are serving their first Georgia felony incarceration.
MO-05	Seven Deadly Sins. Monthly graph from 2000 to present shows admissions, departures, population, and percent of population of inmates convicted of kidnapping, armed robbery, rape, aggravated sodomy, aggravated sexual battery, and aggravated child molestation, for whom especially severe penalties are prescribed.
MO-06	48 months of inmate subpopulations. Table shows number and percentage of white and non-white inmates with methamphetamine offenses, and non-violent first incarcerants, and inmates convicted of the Seven Deadly Sins.
MO-07	Inmate age overview. Line graph shows the average age of the inmate population, by month from 2000 to the present. Pie chart shows the number of currently active inmates in their teens, twenties, thirties, forties, fifties, and age sixty+.
MO-08	Counts by age group. Graphs show the count, by month from 2000 to the present, of inmates in their teens, twenties, thirties, forties, fifties, and age sixty+.
MO-09	Percentages by age group. Graphs show the percentages, by month from 2000 to the present, of inmates in their teens, twenties, thirties, forties, fifties, and age sixty+.
MO-10	48 months of inmate ages. Table shows average age of the standing population, and counts and percentages of teens, twenties, thirties, forties, fifties, and sixty+, for each of the past 48 months.

Friday Report - overview and contents (continued)

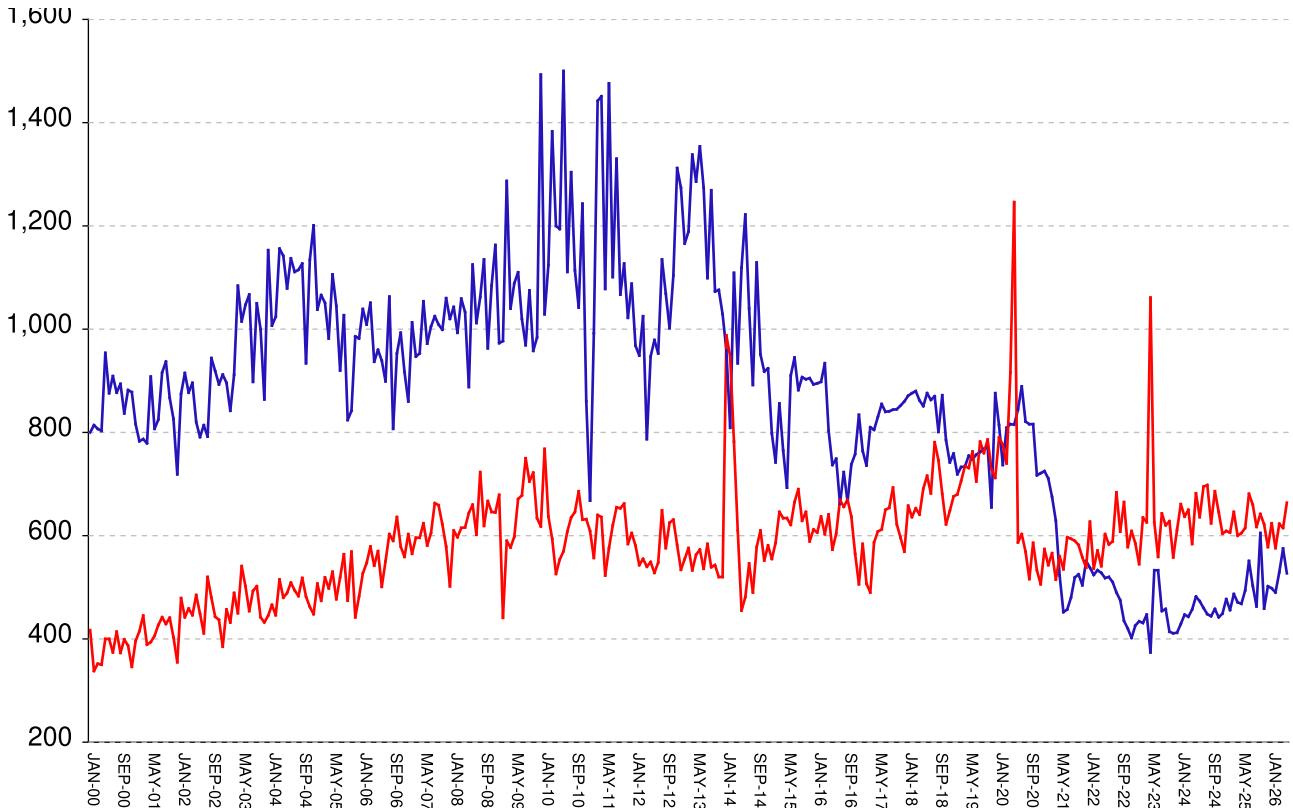
The MSR Table is based on the Management Summary Report (MSR), a snapshot report posted each week in GDC's Scribe database. MSR_RESRCH gathers that data into weekly trends, with one record for each Friday since March 20th, 2009

Page	Content
MSR-01	All housed offenders. Weekly graph from March 20, 2009 to present, showing counts of inmates in state prisons, transitional centers, county prisons, private prisons, inmate boot camps, parole revocation centers, probation Residential Substance Abuse Treatment (RSAT), probation boot camps, probation detention centers, plus the inmate jail backlog and probationers in jail waiting for state facilities.
MSR-02	Probationers in jail. Weekly graph from March 20, 2009 to present, showing counts of probationers in local jails awaiting placement in probation detention centers, probation RSAT centers, and probation boot camps.
MSR-03	State inmates in jail. Weekly graph from March 20, 2009 to present, showing counts of state inmates in local jails awaiting placement in state prison facilities – including those who have not yet been assigned to a diagnostic center, those whose transportation has been delayed for some reason, and those who are ready to be picked up.
MSR-04	Female state inmates in jail. Weekly graph from March 20, 2009 to present, showing counts of female state inmates awaiting placement in a state prison for females.
MSR-05	52-week table: housed offenders. Data for each of the past 52 weeks, showing total prison inmates, parolees in revocation centers, probationers in RSAT/boot camp/detention centers, inmate jail backlog, probationers in jail waiting for facilities, with subtotals.
MSR-06	52-week table: state prisoners. Data for each of the past 52 weeks, showing inmates in state prisons, transition centers, county prisons, pre-release centers, private prisons, and inmate boot camps, with subtotals.
MSR-07	52-week table: waiting in jail. Data for each of the past 52 weeks, showing probationers waiting for detention centers, RSAT, and boot camp; and state prisoners not yet assigned to diagnostic centers, in admission process, with delayed transport, and ready for pickup, with subtotals.

Releases by clemency and maxout, Jan-2000 to May-2026

There are two main ways of being released from a Georgia prison -- by actions of the Board of Pardons and Paroles ("Clemencies") and by service of 100% of the court-ordered sentences ("Maxouts").

"Clemency" includes paroles, reprieves, commutations, and transfer to other confinement prior to expiration of sentence. "Other Releases" includes deaths, and sentences modified or overturned by the courts. Clemencies and maxouts may or may not be followed by periods of probation.



A. Clemency with probation to follow	falls by	42	from	501	to	459
B. Clemency only	falls by	6	from	74	to	68
C. Maxout with probation to follow	RISES BY	52	from	561	to	613
D. Maxout only (unsupervised)	falls by	3	from	54	to	51
E. Other releases	RISES BY	8	from	19	to	27
F. Total releases (A+B+C+D+E)	RISES BY	9	from	1209	to	1218
G. Total clemencies (A+B) (top line)	falls by	48	from	575	to	527
H. Total maxouts (C+D) (bottom line)	RISES BY	49	from	615	to	664
I. % of releases by clemency (G/F)	falls by	4.29%	from	47.56%	to	43.27%
J. % of releases by maxout (H/F)	RISES BY	3.65%	from	50.87%	to	54.52%
K. Supervised releases (A+B+C)	RISES BY	4	from	1136	to	1140
L. % unsupervised releases (D/F)	falls by	.28%	from	4.47%	to	4.19%
M. % supervised releases (K/F)	falls by	.36%	from	93.96%	to	93.6%

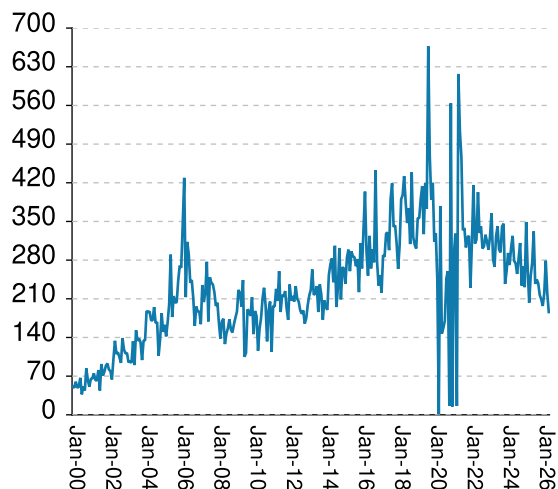
Monthly releases from prison by type of release, for the past 48 months

Month	A Clemency + Prob	B Clemency Only	C Maxout + Prob	D Maxout Only	E Other rels	F Total Releases (A+B+C+D+E)	G Total Clemency (A+B)	H Total Maxout (C+D)	I Percent Clemency (G/F)	J Percent Maxout (H/F)
Jun-22	454	66	527	56	21	1124	520	583	46.26%	51.87%
Jul-22	439	71	529	60	14	1113	510	589	45.82%	52.92%
Aug-22	423	67	615	69	21	1195	490	684	41.00%	57.24%
Sep-22	397	78	548	60	18	1101	475	608	43.14%	55.22%
Oct-22	374	61	604	61	23	1123	435	665	38.74%	59.22%
Nov-22	367	53	521	57	19	1017	420	578	41.30%	56.83%
Dec-22	342	60	547	62	28	1039	402	609	38.69%	58.61%
Jan-23	375	51	525	60	23	1034	426	585	41.20%	56.58%
Feb-23	386	48	491	54	17	996	434	545	43.57%	54.72%
Mar-23	375	56	573	62	24	1090	431	635	39.54%	58.26%
Apr-23	392	55	573	53	26	1099	447	626	40.67%	56.96%
May-23	327	47	928	133	20	1455	374	1061	25.70%	72.92%
Jun-23	460	73	567	59	19	1178	533	626	45.25%	53.14%
Jul-23	459	74	508	51	25	1117	533	559	47.72%	50.04%
Aug-23	400	54	588	55	22	1119	454	643	40.57%	57.46%
Sep-23	401	57	576	44	10	1088	458	620	42.10%	56.99%
Oct-23	361	53	576	52	31	1073	414	628	38.58%	58.53%
Nov-23	354	57	490	68	19	988	411	558	41.60%	56.48%
Dec-23	365	47	554	57	21	1044	412	611	39.46%	58.52%
Jan-24	369	60	600	61	32	1122	429	661	38.24%	58.91%
Feb-24	396	51	577	60	24	1108	447	637	40.34%	57.49%
Mar-24	379	64	585	65	20	1113	443	650	39.80%	58.40%
Apr-24	409	48	531	53	33	1074	457	584	42.55%	54.38%
May-24	426	56	604	78	26	1190	482	682	40.50%	57.31%
Jun-24	410	63	574	62	23	1132	473	636	41.78%	56.18%
Jul-24	398	62	627	68	38	1193	460	695	38.56%	58.26%
Aug-24	381	67	641	57	19	1165	448	698	38.45%	59.91%
Sep-24	379	65	560	64	34	1102	444	624	40.29%	56.62%
Oct-24	399	59	631	55	28	1172	458	686	39.08%	58.53%
Nov-24	388	54	591	55	23	1111	442	646	39.78%	58.15%
Dec-24	391	58	554	50	33	1086	449	604	41.34%	55.62%
Jan-25	416	61	560	49	30	1116	477	609	42.74%	54.57%
Feb-25	399	57	546	60	17	1079	456	606	42.26%	56.16%
Mar-25	431	56	593	53	23	1156	487	646	42.13%	55.88%
Apr-25	409	62	555	45	18	1089	471	600	43.25%	55.10%
May-25	422	46	551	54	26	1099	468	605	42.58%	55.05%
Jun-25	432	62	580	35	36	1145	494	615	43.14%	53.71%
Jul-25	491	60	620	61	33	1265	551	681	43.56%	53.83%
Aug-25	430	73	602	58	16	1179	503	660	42.66%	55.98%
Sep-25	405	58	576	41	26	1106	463	617	41.86%	55.79%
Oct-25	519	86	591	51	26	1273	605	642	47.53%	50.43%
Nov-25	407	52	583	39	22	1103	459	622	41.61%	56.39%
Dec-25	445	57	521	57	28	1108	502	578	45.31%	52.17%
Jan-26	426	72	572	52	35	1157	498	624	43.04%	53.93%
Feb-26	428	62	517	59	27	1093	490	576	44.83%	52.70%
Mar-26	449	80	570	53	28	1180	529	623	44.83%	52.80%
Apr-26	501	74	561	54	19	1209	575	615	47.56%	50.87%
May-26	459	68	613	51	27	1218	527	664	43.27%	54.52%

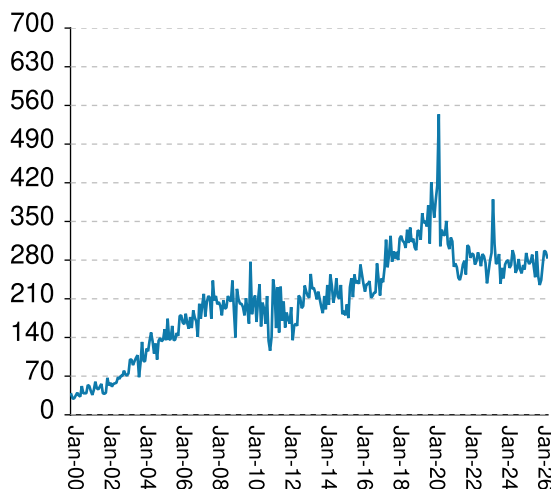
Inmates with meth crimes, by month, Jan-2000 to May-2026

Methamphetamine is one of the most addictive drugs ever known. At first it induces intense euphoria, but with continued use causes severe depression and physical deterioration, including the dental catastrophe known as "meth mouth". Georgia's meth epidemic began in the early 2000s and has seen continued growth over the last 2 decades, with continued expansion beyond the originally predominate use by northern county white males.

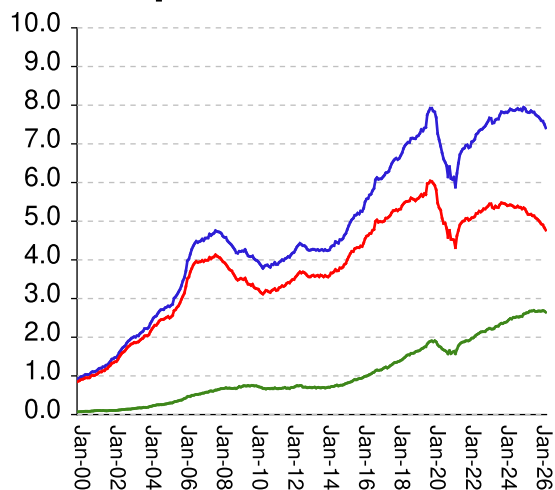
Admissions



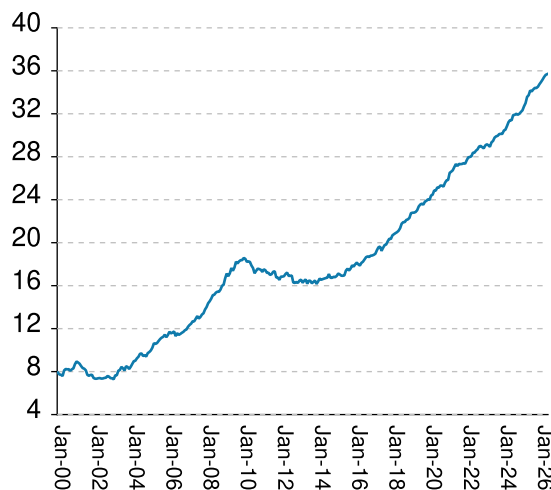
Releases



Population x1000



Percent Non-White

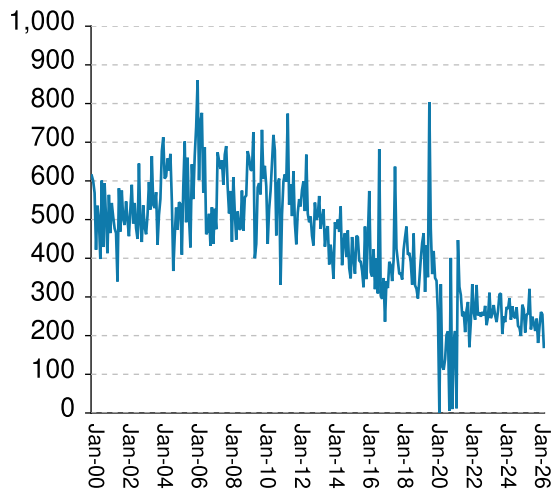


Methamphetamine admissions	falls by	34	from	220	to	186
Methamphetamine releases	falls by	10	from	295	to	285
Methamphetamine population	falls by	99	from	7510	to	7411
Meth white population	falls by	67	from	4835	to	4768
Meth non-white population	falls by	30	from	2675	to	2645
Percent meth inmates who are non-white	RISES BY	.07%	from	35.62%	to	35.69%

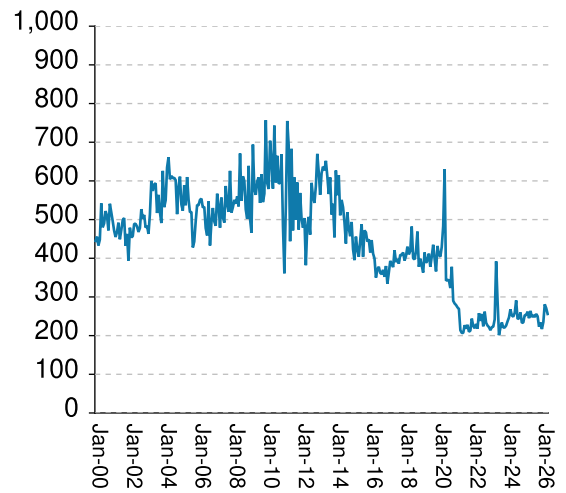
Non-violent first-incarcerants, by month, Jan-2000 to May-2026

Historically, about one in six Georgia prison inmates has been a first-time incarcerant with a non-violent crime. In 2012 Georgia passed HB1176, which aimed to curb the growth of prison population by steering the least dangerous, least hardened offenders away from prison through pre-trial intervention, diversion, drug courts and treatment programs, and raising the dollar thresholds that define property felonies. The expectation is that over time, these measures will reduce the percentage of first-time non-violent incarcerants in prison.

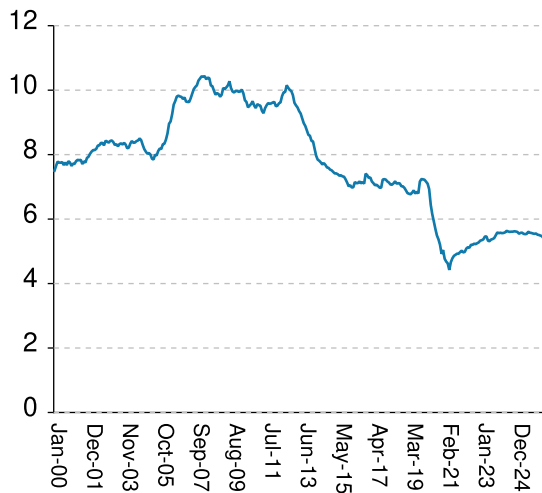
Admissions



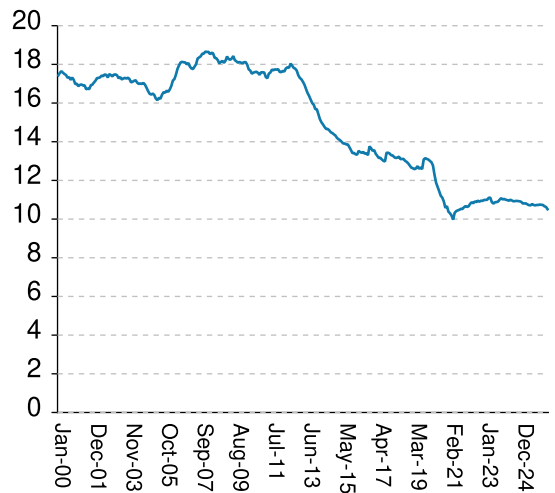
Releases



Population x1000



% Total Population

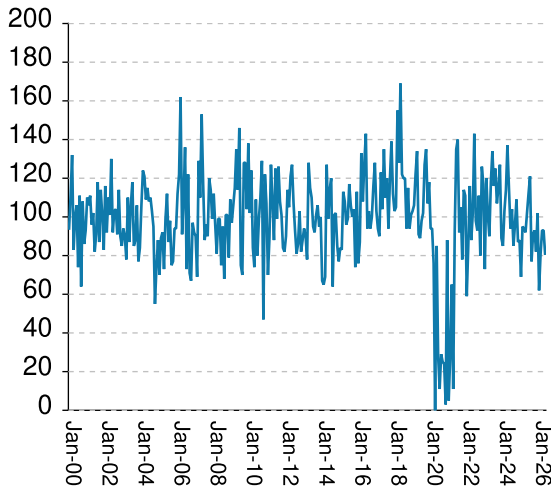


Non-viol/1st-Incar admissions	falls by	84	from	255	to	171
Non-viol/1st-Incar releases	falls by	15	from	271	to	256
Non-viol/1st-Incar population	falls by	85	from	5469	to	5384
Non-viol/1st-Incar % of total population	falls by	.12%	from	10.63%	to	10.51%

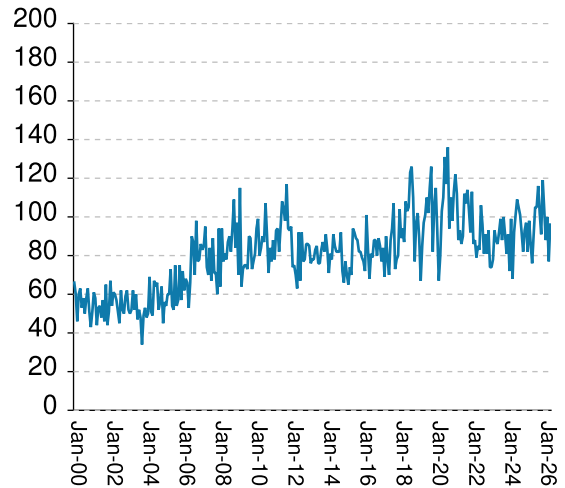
'Seven Deadly Sin', by month, Jan-2000 to May-2026

Tough legislation in 1995 imposed mandatory ten-year minimum terms for kidnapping, armed robbery, rape, aggravated sodomy, aggravated sexual battery, and aggravated child molestation, and a minimum of 25 years for murder. A second conviction resulted in life without parole. As predicted, longer prison terms caused population to climb steeply for about a decade. It then began to level off, as releases started catching up with admissions. The 2008 dip in percentage of total population (bottom right) was caused by the surge of methamphetamine convictions (Page MO-03). Note: these graphs include inmates convicted before 1995.

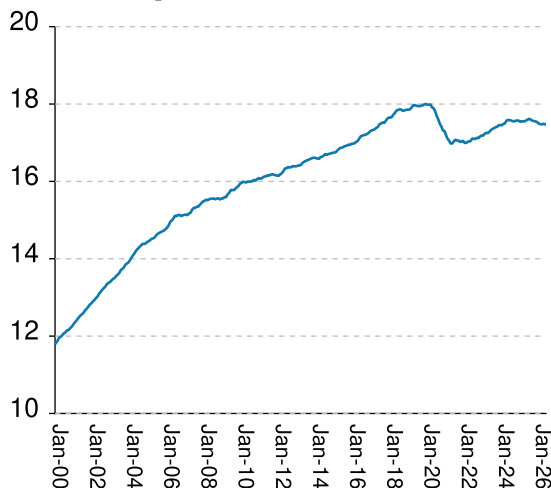
Admissions



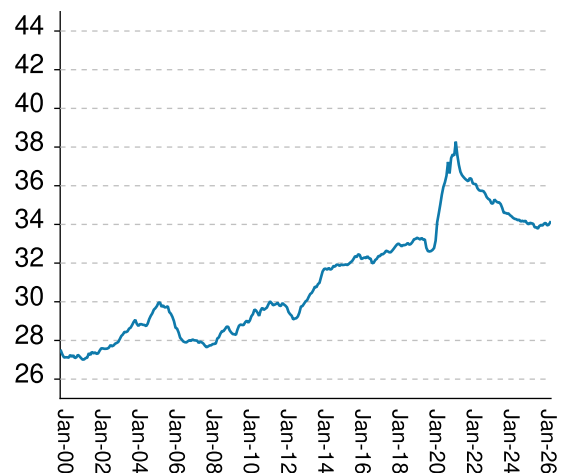
Releases



Population x1000



% Total Population



"Seven Deadly Sin" admissions	falls by	12	from	93	to	81
"Seven Deadly Sin" releases	RISES BY	19	from	77	to	96
"Seven Deadly Sin" population	falls by	15	from	17491	to	17476
"Seven Deadly Sin" % of total population	RISES BY	.13%	from	33.98%	to	34.11%

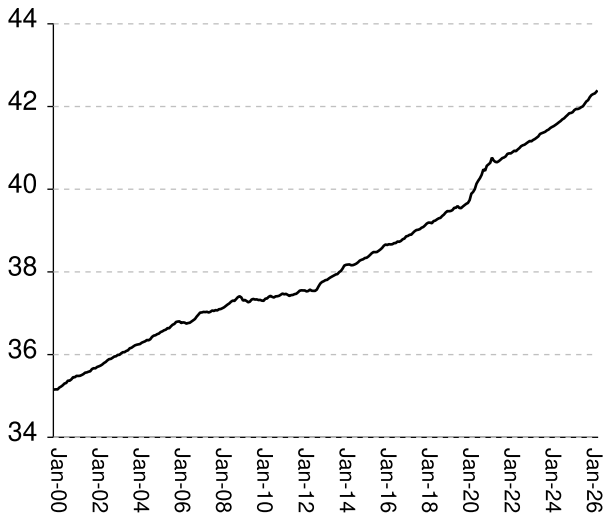
Inmate subpopulation counts and percentages, for the past 48 months

Month	Methamphetamine						1st Incar Non-Violent		Seven Deadly Sins	
	Total Number	Total Percent	White Number	White Percent	Non White Number	Non White Percent	Number	Percent	Number	Percent
Jun-22	7242	15.18%	5196	71.75%	2055	28.38%	5204	10.91%	17109	35.87%
Jul-22	7277	15.22%	5205	71.53%	2079	28.57%	5200	10.88%	17101	35.77%
Aug-22	7333	15.33%	5258	71.70%	2104	28.69%	5236	10.95%	17098	35.74%
Sep-22	7365	15.37%	5239	71.13%	2132	28.95%	5223	10.90%	17128	35.74%
Oct-22	7379	15.39%	5269	71.41%	2141	29.01%	5251	10.95%	17117	35.71%
Nov-22	7418	15.38%	5318	71.69%	2143	28.89%	5277	10.94%	17162	35.59%
Dec-22	7456	15.36%	5316	71.30%	2146	28.78%	5332	10.99%	17186	35.41%
Jan-23	7517	15.45%	5353	71.21%	2184	29.05%	5345	10.99%	17185	35.32%
Feb-23	7582	15.52%	5391	71.10%	2211	29.16%	5371	11.00%	17231	35.27%
Mar-23	7668	15.60%	5445	71.01%	2229	29.07%	5459	11.10%	17254	35.09%
Apr-23	7657	15.57%	5448	71.15%	2215	28.93%	5462	11.11%	17251	35.08%
May-23	7535	15.39%	5355	71.07%	2211	29.34%	5327	10.88%	17281	35.29%
Jun-23	7549	15.34%	5330	70.61%	2225	29.47%	5315	10.80%	17329	35.20%
Jul-23	7617	15.42%	5390	70.76%	2268	29.78%	5366	10.87%	17353	35.14%
Aug-23	7640	15.45%	5361	70.17%	2284	29.90%	5381	10.88%	17379	35.14%
Sep-23	7643	15.40%	5358	70.10%	2289	29.95%	5411	10.90%	17398	35.05%
Oct-23	7747	15.51%	5428	70.07%	2333	30.11%	5497	11.00%	17413	34.85%
Nov-23	7827	15.52%	5473	69.92%	2358	30.13%	5585	11.08%	17449	34.60%
Dec-23	7817	15.49%	5466	69.92%	2355	30.13%	5563	11.02%	17457	34.60%
Jan-24	7805	15.46%	5456	69.90%	2376	30.44%	5576	11.04%	17451	34.56%
Feb-24	7820	15.46%	5436	69.51%	2387	30.52%	5564	11.00%	17482	34.57%
Mar-24	7811	15.39%	5404	69.18%	2410	30.85%	5570	10.98%	17497	34.48%
Apr-24	7847	15.38%	5412	68.97%	2450	31.22%	5587	10.95%	17566	34.42%
May-24	7900	15.43%	5422	68.63%	2481	31.41%	5635	11.00%	17589	34.34%
Jun-24	7881	15.37%	5410	68.65%	2474	31.39%	5617	10.96%	17582	34.29%
Jul-24	7867	15.34%	5385	68.45%	2508	31.88%	5602	10.92%	17577	34.27%
Aug-24	7865	15.33%	5358	68.12%	2509	31.90%	5609	10.93%	17557	34.22%
Sep-24	7885	15.38%	5363	68.02%	2523	32.00%	5609	10.94%	17552	34.24%
Oct-24	7914	15.38%	5389	68.09%	2525	31.91%	5622	10.93%	17569	34.15%
Nov-24	7885	15.34%	5362	68.00%	2523	32.00%	5614	10.92%	17574	34.19%
Dec-24	7898	15.35%	5357	67.83%	2541	32.17%	5600	10.89%	17569	34.15%
Jan-25	7858	15.32%	5318	67.68%	2540	32.32%	5546	10.81%	17541	34.19%
Feb-25	7944	15.41%	5347	67.31%	2597	32.69%	5573	10.81%	17554	34.06%
Mar-25	7914	15.34%	5314	67.15%	2611	32.99%	5579	10.81%	17550	34.01%
Apr-25	7837	15.22%	5241	66.88%	2631	33.57%	5542	10.76%	17556	34.08%
May-25	7815	15.14%	5179	66.27%	2636	33.73%	5532	10.72%	17582	34.06%
Jun-25	7814	15.11%	5173	66.20%	2670	34.17%	5541	10.71%	17603	34.03%
Jul-25	7856	15.09%	5179	65.92%	2677	34.08%	5609	10.78%	17619	33.85%
Aug-25	7824	15.06%	5143	65.73%	2681	34.27%	5577	10.73%	17591	33.85%
Sep-25	7820	15.04%	5139	65.72%	2691	34.41%	5570	10.71%	17566	33.78%
Oct-25	7762	14.99%	5092	65.60%	2670	34.40%	5553	10.73%	17557	33.92%
Nov-25	7728	14.96%	5063	65.52%	2668	34.52%	5542	10.73%	17548	33.97%
Dec-25	7702	14.91%	5026	65.26%	2677	34.76%	5552	10.75%	17531	33.94%
Jan-26	7655	14.90%	4979	65.04%	2676	34.96%	5516	10.74%	17489	34.04%
Feb-26	7603	14.82%	4928	64.82%	2675	35.18%	5505	10.73%	17482	34.08%
Mar-26	7585	14.74%	4904	64.65%	2687	35.43%	5485	10.66%	17475	33.95%
Apr-26	7510	14.59%	4835	64.38%	2675	35.62%	5469	10.63%	17491	33.98%
May-26	7411	14.46%	4768	64.34%	2645	35.69%	5384	10.51%	17476	34.11%

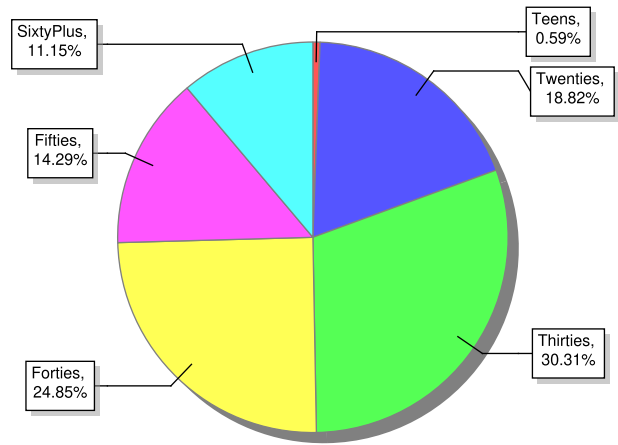
Overview of inmate age statistics, Jan-2000 to May-2026

The "aging inmate population" is a concern in correctional systems throughout America, including Georgia. Here, the increase in inmate age is the result of several factors. Teenagers have been steered away from prison by increased usage of probation and other alternatives, at least for their first convictions. And there has been a surge of middle-aged male sex offenders due to the expanding "It's OK to tell" ethos. But most importantly, more severe sentence lengths and release policies have greatly increased the length of time that most offenders -- especially violent ones -- spend in prison, thereby increasing their average age.

Average age since 2000



Current Age



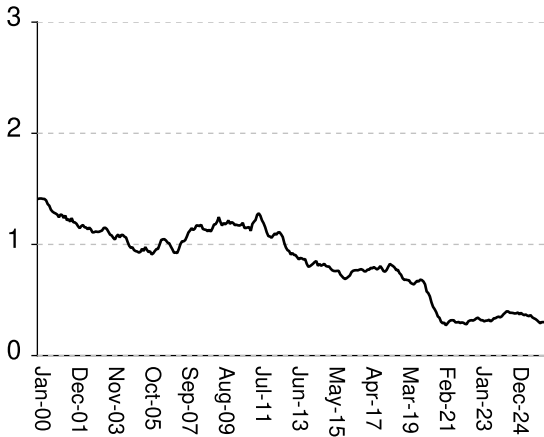
May-2026

Average age of active inmates	RISES BY	.05	from	42.32	to	42.37
Number in their teens	level	at	301
Percentage in their teens	RISES BY	.01%	from	.58%	to	.59%
Number in their twenties	falls by	59	from	9,703	to	9,644
Percentage in their twenties	falls by	.03%	from	18.85%	to	18.82%
Number in their thirties	falls by	101	from	15,632	to	15,531
Percentage in their thirties	falls by	.06%	from	30.37%	to	30.31%
Number in their forties	falls by	46	from	12,781	to	12,735
Percentage in their forties	RISES BY	.03%	from	24.83%	to	24.86%
Number in their fifties	falls by	31	from	7,352	to	7,321
Percentage in their fifties	RISES BY	.01%	from	14.28%	to	14.29%
Number age sixty and up	RISES BY	16	from	5,697	to	5,713
Percentage age sixty and up	RISES BY	.08%	from	11.07%	to	11.15%

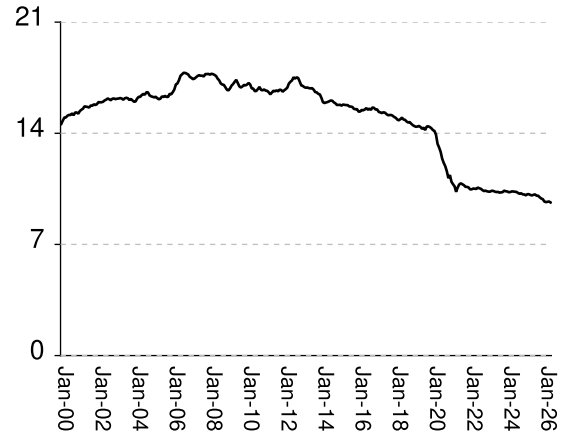
Monthly counts of inmates by age group, Jan-2000 to May-2026

Y-axis of Twenties/Thirties/Forties/Fifties runs from 0 to 21,000. Y-axis of Teens/Sixty+ runs from 0 to 3,000.

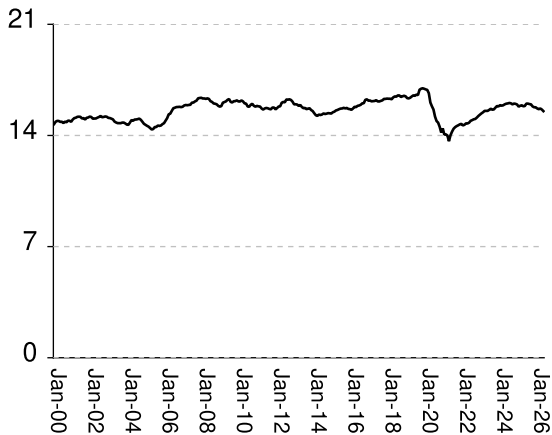
Teens x 1000



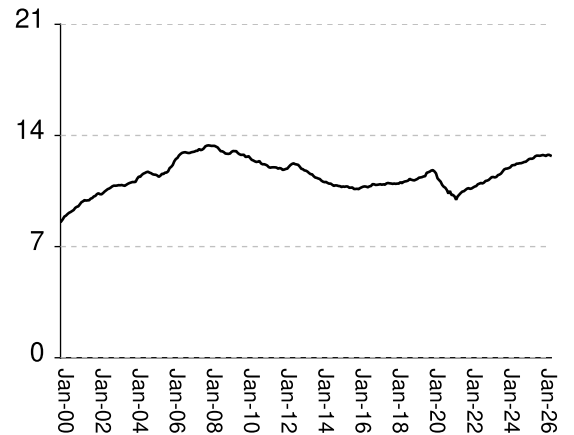
Twenties x 1000



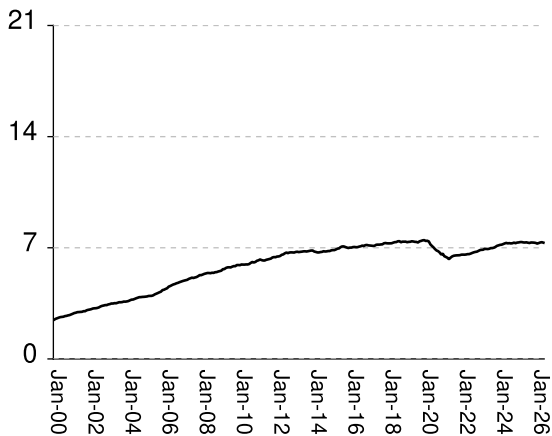
Thirties x 1000



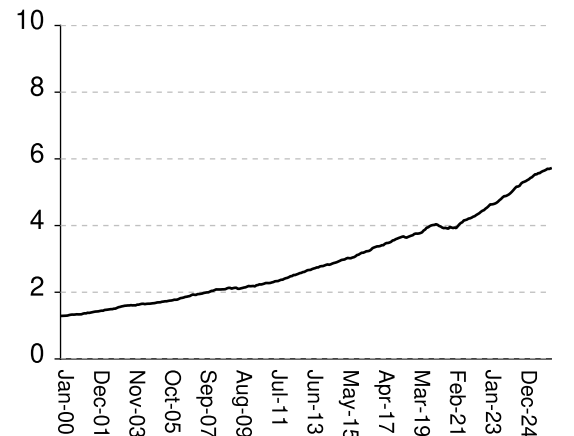
Forties x 1000



Fifties x 1000



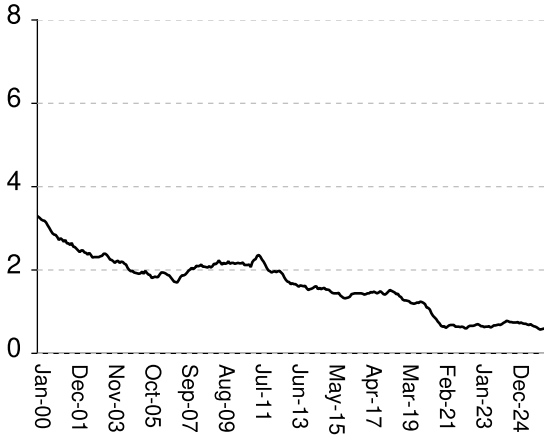
Sixty & Up x 1000



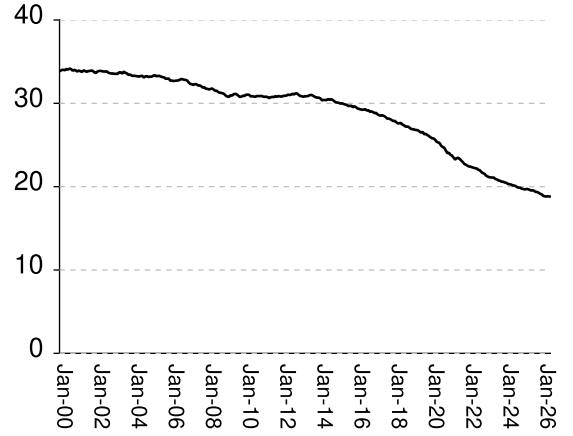
Monthly percentages of inmates by age group, Jan-2000 to May-2026

Y-axis of Twenties/Thirties/Forties/Fifties runs from 0% to 40%. Y-axis of Teens/Sixty+ runs from 0% to 8%

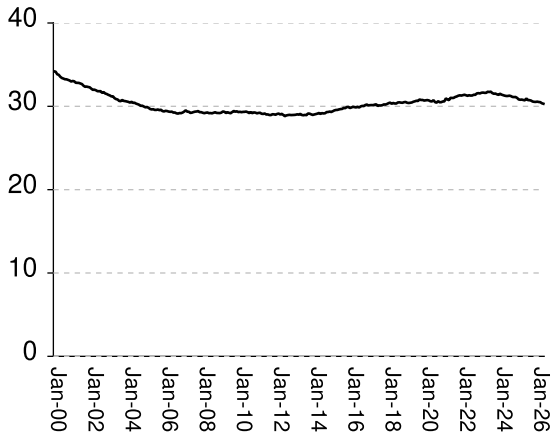
Teens (%)



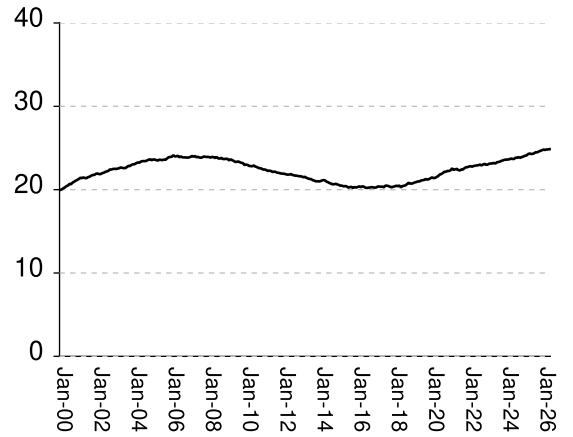
Twenties (%)



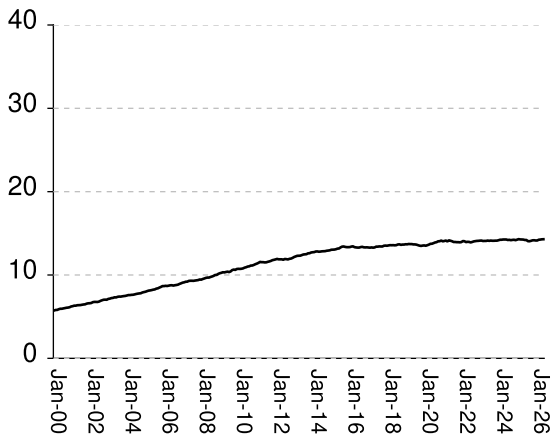
Thirties (%)



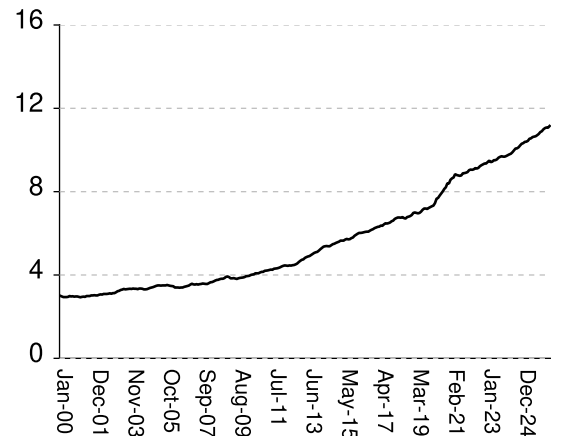
Forties (%)



Fifties (%)



Sixty & Up (%)

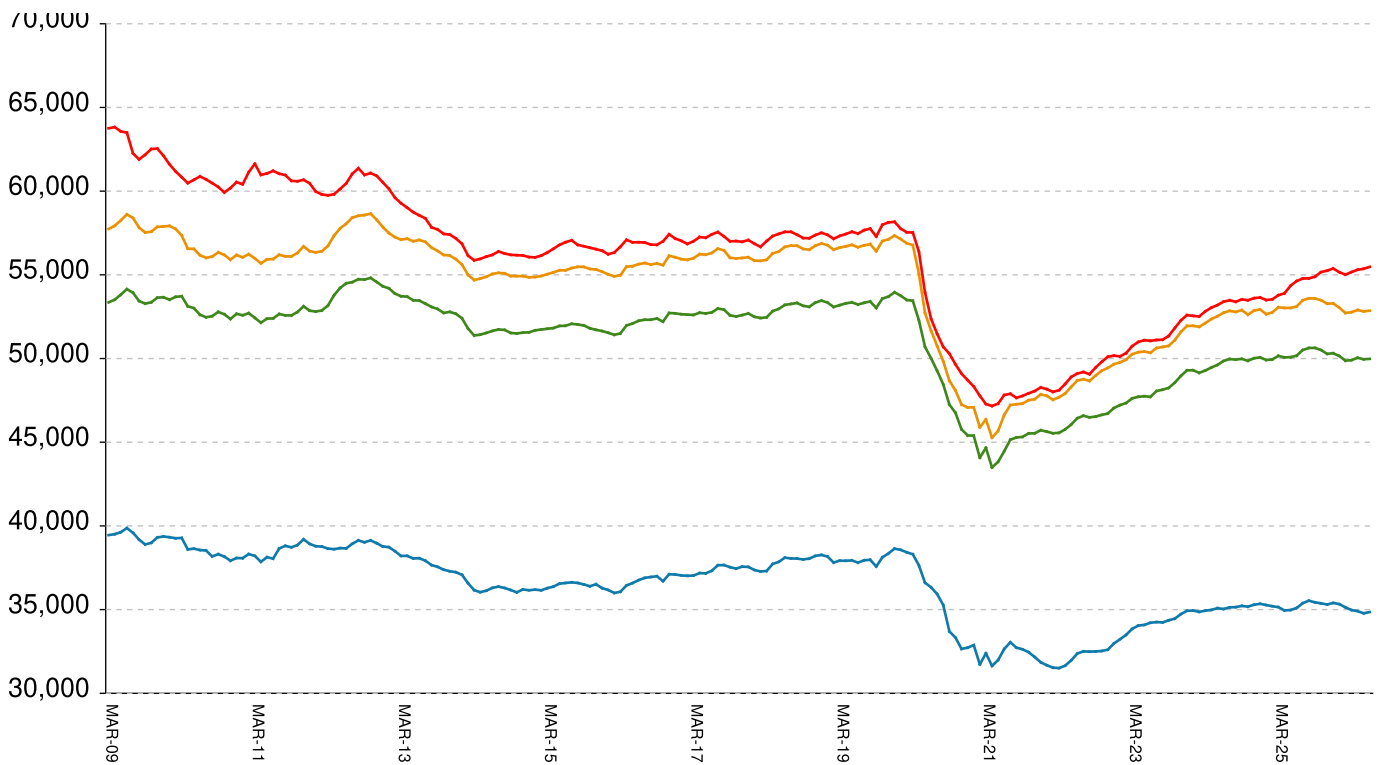


Inmate counts & percentages by age, for past 48 months

Month	Avg Age	Teens		Twenties		Thirties		Forties		Fifties		Sixty & Up	
		Number	Percent	Number	Percent	Number	Percent	Number	Percent	Number	Percent	Number	Percent
Jun-22	40.92	307	0.64%	10580	22.18%	14922	31.29%	10925	22.91%	6633	13.91%	4343	9.11%
Jul-22	40.96	315	0.66%	10535	22.03%	14966	31.30%	10966	22.93%	6675	13.96%	4371	9.14%
Aug-22	40.99	318	0.66%	10503	21.96%	15017	31.39%	11007	23.01%	6711	14.03%	4412	9.22%
Sep-22	41.04	315	0.66%	10421	21.75%	15039	31.38%	10978	22.91%	6739	14.06%	4444	9.27%
Oct-22	41.06	322	0.67%	10363	21.62%	15125	31.55%	11032	23.01%	6754	14.09%	4462	9.31%
Nov-22	41.08	334	0.69%	10386	21.54%	15226	31.58%	11134	23.09%	6801	14.10%	4507	9.35%
Dec-22	41.11	341	0.70%	10346	21.32%	15310	31.55%	11156	22.99%	6853	14.12%	4540	9.35%
Jan-23	41.14	329	0.68%	10324	21.22%	15390	31.63%	11195	23.01%	6872	14.13%	4583	9.42%
Feb-23	41.17	318	0.65%	10326	21.14%	15458	31.65%	11287	23.11%	6876	14.08%	4634	9.49%
Mar-23	41.16	318	0.65%	10379	21.11%	15547	31.62%	11376	23.14%	6926	14.09%	4634	9.42%
Apr-23	41.19	308	0.63%	10371	21.09%	15548	31.62%	11384	23.15%	6929	14.09%	4642	9.44%
May-23	41.21	314	0.64%	10326	21.09%	15548	31.75%	11359	23.20%	6920	14.13%	4658	9.51%
Jun-23	41.25	315	0.64%	10299	20.92%	15612	31.72%	11390	23.14%	6939	14.10%	4680	9.51%
Jul-23	41.28	322	0.65%	10308	20.87%	15683	31.76%	11502	23.29%	6979	14.13%	4715	9.55%
Aug-23	41.34	308	0.62%	10264	20.75%	15623	31.59%	11537	23.32%	6980	14.11%	4761	9.63%
Sep-23	41.35	318	0.64%	10279	20.71%	15640	31.51%	11601	23.37%	7005	14.11%	4797	9.67%
Oct-23	41.37	335	0.67%	10291	20.60%	15752	31.53%	11728	23.47%	7055	14.12%	4845	9.70%
Nov-23	41.39	336	0.67%	10385	20.59%	15853	31.44%	11858	23.52%	7121	14.12%	4881	9.68%
Dec-23	41.42	345	0.68%	10351	20.51%	15832	31.38%	11904	23.59%	7152	14.17%	4884	9.68%
Jan-24	41.44	350	0.69%	10335	20.47%	15907	31.51%	11916	23.60%	7183	14.23%	4905	9.71%
Feb-24	41.48	344	0.68%	10286	20.34%	15878	31.40%	11946	23.62%	7195	14.23%	4930	9.75%
Mar-24	41.51	353	0.70%	10300	20.30%	15900	31.34%	11994	23.64%	7233	14.26%	4967	9.79%
Apr-24	41.53	371	0.73%	10339	20.26%	15960	31.28%	12111	23.73%	7275	14.26%	5013	9.82%
May-24	41.56	384	0.75%	10334	20.18%	16001	31.24%	12134	23.69%	7305	14.26%	5064	9.89%
Jun-24	41.59	398	0.78%	10319	20.13%	16017	31.24%	12142	23.68%	7280	14.20%	5119	9.98%
Jul-24	41.62	397	0.77%	10307	20.09%	16045	31.28%	12221	23.83%	7292	14.22%	5166	10.07%
Aug-24	41.65	385	0.75%	10238	19.95%	16025	31.23%	12226	23.83%	7274	14.18%	5170	10.08%
Sep-24	41.69	385	0.75%	10192	19.88%	15959	31.13%	12249	23.90%	7286	14.21%	5193	10.13%
Oct-24	41.71	383	0.74%	10221	19.87%	16007	31.11%	12254	23.82%	7323	14.23%	5260	10.22%
Nov-24	41.76	379	0.74%	10154	19.76%	15992	31.12%	12287	23.91%	7289	14.18%	5296	10.30%
Dec-24	41.79	380	0.74%	10145	19.72%	15950	31.01%	12331	23.97%	7326	14.24%	5313	10.33%
Jan-25	41.84	387	0.75%	10092	19.67%	15816	30.83%	12345	24.06%	7336	14.30%	5333	10.39%
Feb-25	41.84	371	0.72%	10163	19.72%	15870	30.79%	12425	24.10%	7358	14.27%	5362	10.40%
Mar-25	41.86	384	0.74%	10164	19.70%	15899	30.81%	12510	24.25%	7360	14.26%	5388	10.44%
Apr-25	41.91	371	0.72%	10113	19.63%	15841	30.76%	12536	24.34%	7338	14.25%	5429	10.54%
May-25	41.94	364	0.71%	10086	19.54%	15854	30.72%	12531	24.28%	7332	14.20%	5450	10.56%
Jun-25	41.94	369	0.71%	10125	19.57%	16005	30.94%	12573	24.30%	7344	14.20%	5496	10.62%
Jul-25	41.96	359	0.69%	10150	19.50%	16005	30.75%	12681	24.36%	7319	14.06%	5537	10.64%
Aug-25	41.98	355	0.68%	10067	19.37%	15976	30.74%	12729	24.49%	7302	14.05%	5537	10.66%
Sep-25	42.01	364	0.70%	10069	19.36%	15959	30.69%	12729	24.48%	7333	14.10%	5570	10.71%
Oct-25	42.07	345	0.67%	9968	19.26%	15831	30.58%	12719	24.57%	7329	14.16%	5573	10.77%
Nov-25	42.12	336	0.65%	9890	19.14%	15777	30.54%	12742	24.66%	7323	14.17%	5608	10.86%
Dec-25	42.15	329	0.64%	9850	19.07%	15774	30.53%	12769	24.72%	7306	14.14%	5632	10.90%
Jan-26	42.23	318	0.62%	9702	18.88%	15699	30.56%	12745	24.81%	7265	14.14%	5648	10.99%
Feb-26	42.28	304	0.59%	9663	18.84%	15655	30.52%	12708	24.77%	7298	14.23%	5671	11.05%
Mar-26	42.3	291	0.57%	9686	18.82%	15698	30.50%	12776	24.82%	7335	14.25%	5703	11.08%
Apr-26	42.32	301	0.58%	9703	18.85%	15632	30.37%	12781	24.83%	7352	14.28%	5697	11.07%
May-26	42.37	301	0.59%	9644	18.82%	15531	30.31%	12735	24.86%	7321	14.29%	5713	11.15%

All housed offenders under GDC jurisdiction

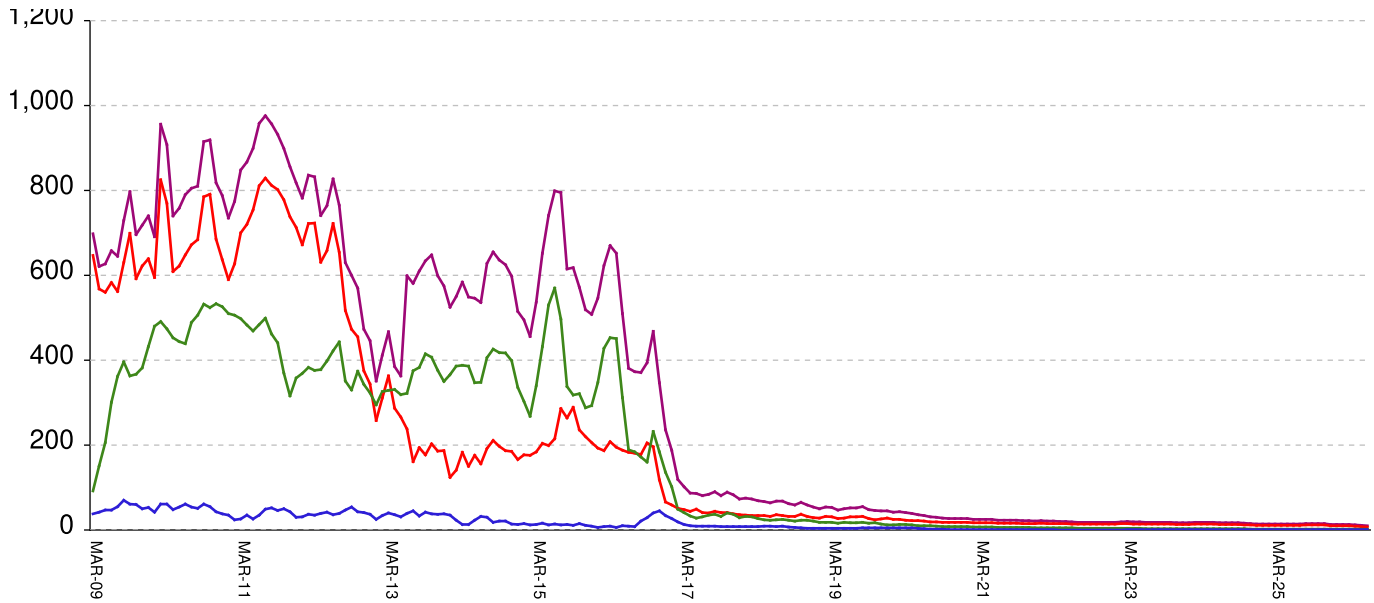
March 20, 2009 through June 19, 2026



All in bed + probs in jail + backlog	RISES BY	25	from	55,473	to	55,498
Probationers in jail	10	at	10
Inmate jail backlog	falls by	98	from	2,656	to	2,558
All in beds: inmate + Prob + parole	RISES BY	123	from	52,807	to	52,930
Total probationers in beds	RISES BY	27	from	2,857	to	2,884
Probation detention centers	RISES BY	19	from	1,397	to	1,416
Probation boot camps	falls by	...	from		to	
Probation RSAT	RISES BY	8	from	1,460	to	1,468
Parole revocation centers	falls by	...	from		to	
All in inmate beds: state + other	RISES BY	96	from	49,950	to	50,046
Other inmate facilities:	RISES BY	17	from	15,109	to	15,126
Inmate boot camps	0	at	0
Private prisons	RISES BY	71	from	8,079	to	8,150
County prisons	falls by	35	from	4,211	to	4,176
Transitional centers	falls by	19	from	2,819	to	2,800
In state prisons only	RISES BY	79	from	34,841	to	34,920

Probationers in jail awaiting placement in facilities

March 20, 2009 through June 19, 2026



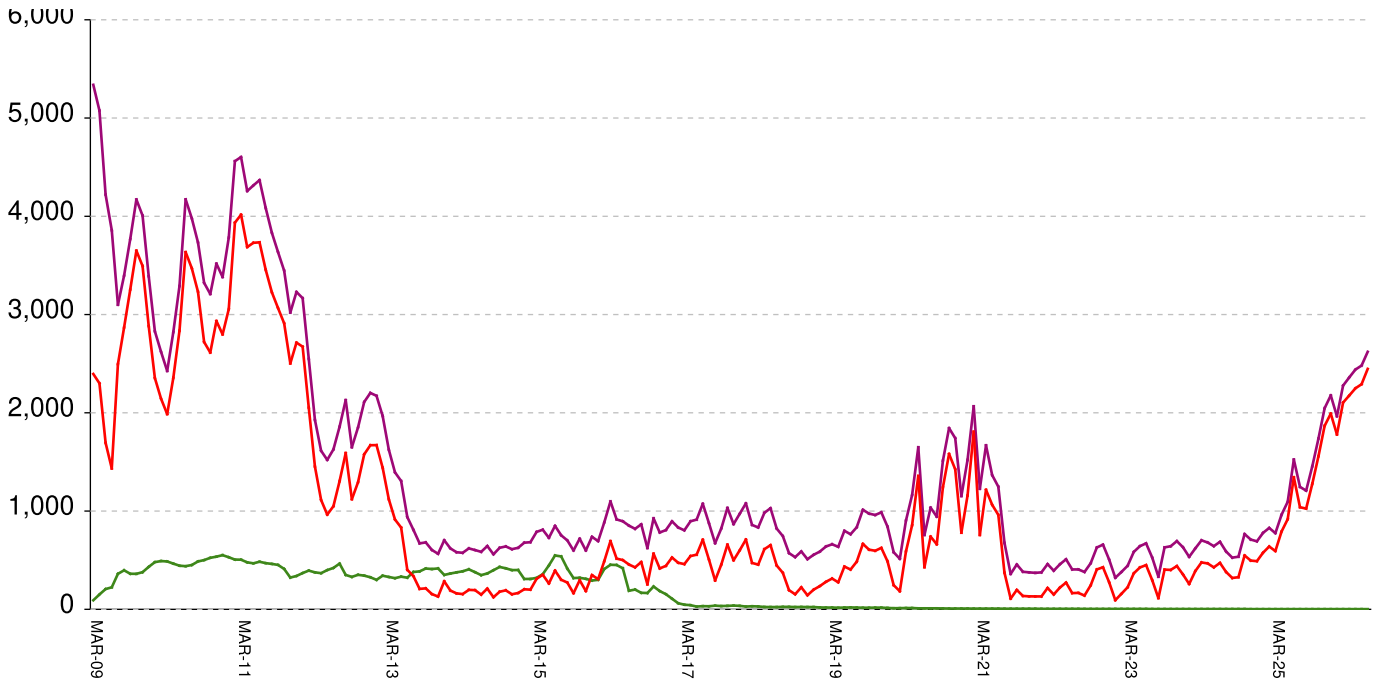
This graph shows, for each Friday since March 20 2009, the number of sentenced felony probationers who were waiting in jail for placement in facilities that GDC operates for housing probationers -- detention centers, probation residential substance abuse treatment (RSAT) centers, and probation boot camps. Counts include both those offenders sentenced directly from court, and those whose street probation was revoked.

Total probationers waiting in jail	level	at	10
...waiting for detention centers	level	at	7
...waiting for probation RSAT	level	at	2
...waiting for probation boot camps	level	at	1

The highest number of probationers waiting in jail was 994 on 05-MAR-10
 ...highest number waiting for detention centers was 859 on 05-MAR-10
 ...highest number waiting for probation RSAT was 592 on 10-JUL-15
 ...highest number waiting for probation boot camps was 70 on 18-SEP-09

State inmates in jail awaiting placement in facilities

March 20, 2009 through June 19, 2026



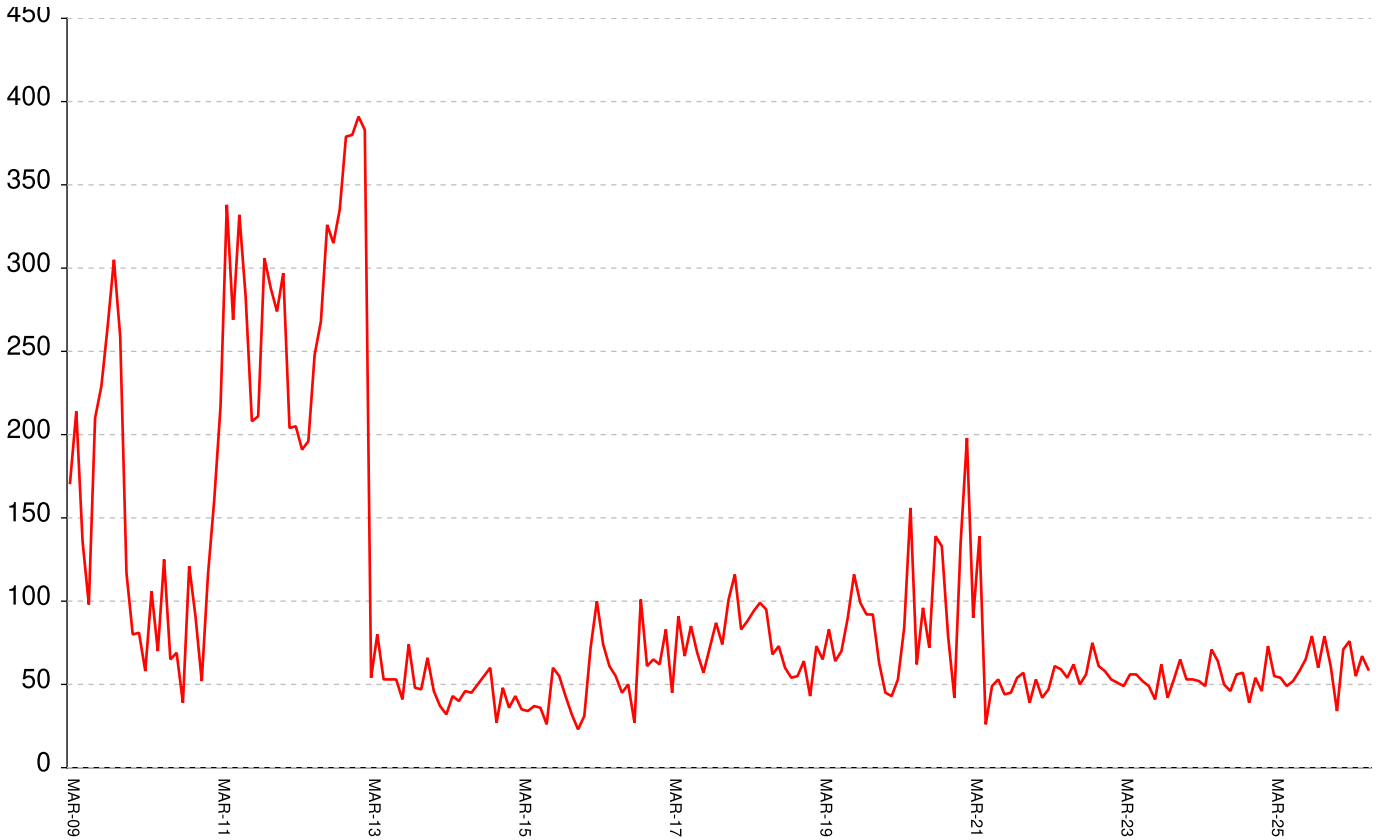
This graph shows, for each Friday since March 2009, the number of prisoners, probationers, and parolees in local jails who have been sentenced or revoked to state prison and whose documents have been received and verified by GDC. Most are almost immediately assigned to a diagnostic center, and are designated as in "admission processing". Of those a few hundred may be in the "transportation delayed" category because there is no room in the assigned diagnostic center, or because the inmate is being held for medical reasons, or for other court proceedings, or other reasons. Those remaining are "ready to be picked up".

Total state inmates waiting in jail	falls by	98	from	2656	to	2558
... not yet assigned to a diagnostic center	level	at	10
... total "in admission processing"	falls by	98	from	2646	to	2548
... with "transportation delayed"	RISES BY	10	from	163	to	173
... ready to be picked up	falls by	108	from	2483	to	2375

The highest number of state inmates waiting in jail was 5338 on 27-MAR-09
 ... highest number not asg to a diagnostic center was 2881 on 12-JUN-09
 ... highest number in admission processing was 4916 on 25-MAR-11
 ... highest number with transportation delayed was 645 on 14-JAN-11
 ... highest number ready to be pickup was 4435 on 25-MAR-11

Female state inmates in jail awaiting pickup

March 20, 2009 through June 19, 2026



This graph shows, for each Friday since March 2009, the number of female state prisoners in local jails who were assigned to diagnostic centers but had not yet been picked up.

Female state inmates in jails waiting picked up **RISES BY 2** **from 65** **to 67**

The highest number of female inmates waiting in jail was 424 on 01-FEB-13

The lowest number of female inmates waiting in jail was 17 on 20-MAR-20

Summary of housed prisoners, parolees, and probationers

Week Ending	Prison	Parole	Probation			Prison+parole +probation	Jail		Total
	Total inmates	Revocation centers	Prob RSAT	Boot camp	Detention		Inmate backlog	Probationers	Prison+parole +probation+jail
27-Jun-2025	50363		1438		1512	53313	1425	14	54752
04-Jul-2025	50404		1450		1516	53370	1394	14	54778
11-Jul-2025	50529		1433		1531	53493	1191	14	54698
18-Jul-2025	50525		1462		1492	53479	1246	14	54739
25-Jul-2025	50570		1485		1514	53569	1318	14	54901
01-Aug-2025	50604		1492		1499	53595	1266	14	54875
08-Aug-2025	50586		1483		1482	53551	1112	14	54677
15-Aug-2025	50624		1487		1483	53594	1113	14	54721
22-Aug-2025	50654		1478		1463	53595	1204	15	54814
29-Aug-2025	50683		1491		1461	53635	1208	15	54858
05-Sep-2025	50623		1491		1458	53572	1164	15	54751
12-Sep-2025	50671		1504		1474	53649	1168	15	54832
19-Sep-2025	50604		1479		1477	53560	1350	15	54925
26-Sep-2025	50642		1490		1446	53578	1456	15	55049
03-Oct-2025	50592		1496		1426	53514	1545	15	55074
10-Oct-2025	50542		1502		1438	53482	1568	15	55065
17-Oct-2025	50565		1526		1461	53552	1619	15	55186
24-Oct-2025	50468		1540		1470	53478	1738	15	55231
31-Oct-2025	50381		1483		1513	53377	1861	15	55253
07-Nov-2025	50231		1503		1493	53227	1898	15	55140
14-Nov-2025	50276		1516		1485	53277	1907	15	55199
21-Nov-2025	50343		1512		1498	53353	1956	15	55324
28-Nov-2025	50271		1495		1515	53281	2047	15	55343
05-Dec-2025	50325		1472		1501	53298	1989	14	55301
12-Dec-2025	50317		1481		1499	53297	2063	13	55373
19-Dec-2025	50326		1503		1474	53303	2078	13	55394
26-Dec-2025	50291		1493		1474	53258	2177	13	55448
02-Jan-2026	50238		1475		1427	53140	2171	13	55324
09-Jan-2026	50250		1479		1429	53158	1965	13	55136
16-Jan-2026	50195		1483		1436	53114	2042	13	55169
23-Jan-2026	50092		1469		1430	52991	2157	13	55161
30-Jan-2026	49980		1465		1364	52809	2182	13	55004
06-Feb-2026	49874		1475		1390	52739	2212	13	54964
13-Feb-2026	49848		1464		1399	52711	2277	13	55001
20-Feb-2026	49860		1455		1374	52689	2304	13	55006
27-Feb-2026	49899		1447		1403	52749	2316	13	55078
06-Mar-2026	49854		1448		1412	52714	2364	13	55091
13-Mar-2026	49912		1458		1410	52780	2360	13	55153
20-Mar-2026	49857		1468		1406	52731	2430	13	55174
27-Mar-2026	49997		1464		1394	52855	2372	13	55240
03-Apr-2026	50055		1464		1396	52915	2389	13	55317
10-Apr-2026	50068		1461		1400	52929	2396	12	55337
17-Apr-2026	50094		1462		1382	52938	2357	12	55307
24-Apr-2026	49963		1478		1363	52804	2440	12	55256
01-May-2026	50043		1482		1387	52912	2481	12	55405
08-May-2026	49954		1477		1379	52810	2483	11	55304
15-May-2026	49952		1477		1372	52801	2530	11	55342
22-May-2026	49906		1478		1387	52771	2582	11	55364
29-May-2026	49923		1480		1390	52793	2591	11	55395
05-Jun-2026	49944		1481		1411	52836	2621	10	55467
12-Jun-2026	49950		1460		1397	52807	2656	10	55473
19-Jun-2026	50046		1468		1416	52930	2558	10	55498

Offenders housed in facilities for state prisoners

Week ending	In facilities other than state prisons							Total Inmates
	In state prisons	Transition centers	County prisons	Pre-rel centers	Private prisons	Inmate boot camps	Total others	
27-Jun-2025	35203	2645	4483		8032	0	15160	50363
04-Jul-2025	35284	2652	4430		8038	0	15120	50404
11-Jul-2025	35380	2669	4436		8044	0	15149	50529
18-Jul-2025	35399	2690	4400		8036	0	15126	50525
25-Jul-2025	35464	2698	4363		8045	0	15106	50570
01-Aug-2025	35516	2709	4347		8032	0	15088	50604
08-Aug-2025	35507	2698	4347		8034	0	15079	50586
15-Aug-2025	35522	2714	4349		8039	0	15102	50624
22-Aug-2025	35539	2726	4348		8041	0	15115	50654
29-Aug-2025	35576	2714	4352		8041	0	15107	50683
05-Sep-2025	35478	2721	4352		8072	0	15145	50623
12-Sep-2025	35437	2739	4396		8099	0	15234	50671
19-Sep-2025	35399	2749	4378		8078	0	15205	50604
26-Sep-2025	35420	2732	4384		8106	0	15222	50642
03-Oct-2025	35389	2727	4371		8105	0	15203	50592
10-Oct-2025	35390	2705	4350		8097	0	15152	50542
17-Oct-2025	35402	2716	4337		8110	0	15163	50565
24-Oct-2025	35359	2744	4297		8068	0	15109	50468
31-Oct-2025	35328	2751	4237		8065	0	15053	50381
07-Nov-2025	35288	2748	4167		8028	0	14943	50231
14-Nov-2025	35293	2750	4193		8040	0	14983	50276
21-Nov-2025	35342	2756	4211		8034	0	15001	50343
28-Nov-2025	35305	2745	4168		8053	0	14966	50271
05-Dec-2025	35396	2746	4134		8049	0	14929	50325
12-Dec-2025	35370	2759	4130		8058	0	14947	50317
19-Dec-2025	35414	2755	4107		8049	1	14912	50326
26-Dec-2025	35409	2737	4082		8062	1	14882	50291
02-Jan-2026	35371	2745	4056		8065	1	14867	50238
09-Jan-2026	35363	2780	4032		8074	1	14887	50250
16-Jan-2026	35354	2745	3988		8107	1	14841	50195
23-Jan-2026	35302	2731	3960		8098	1	14790	50092
30-Jan-2026	35249	2730	3926		8074	1	14731	49980
06-Feb-2026	35179	2729	3891		8074	1	14695	49874
13-Feb-2026	35121	2721	3906		8099	1	14727	49848
20-Feb-2026	35112	2747	3898		8102	1	14748	49860
27-Feb-2026	35132	2750	3907		8109	1	14767	49899
06-Mar-2026	35106	2739	3932		8076	1	14748	49854
13-Mar-2026	35010	2751	4084		8066	1	14902	49912
20-Mar-2026	34880	2758	4146		8072	1	14977	49857
27-Mar-2026	34907	2761	4212		8116	1	15090	49997
03-Apr-2026	34940	2757	4236		8122	0	15115	50055
10-Apr-2026	34946	2755	4263		8104	0	15122	50068
17-Apr-2026	34929	2777	4289		8099	0	15165	50094
24-Apr-2026	34821	2773	4275		8094	0	15142	49963
01-May-2026	34845	2792	4297		8109	0	15198	50043
08-May-2026	34785	2787	4284		8098	0	15169	49954
15-May-2026	34761	2794	4289		8108	0	15191	49952
22-May-2026	34745	2800	4272		8089	0	15161	49906
29-May-2026	34768	2800	4260		8095	0	15155	49923
05-Jun-2026	34797	2811	4250		8086	0	15147	49944
12-Jun-2026	34841	2819	4211		8079	0	15109	49950
19-Jun-2026	34920	2800	4176		8150	0	15126	50046

Offenders waiting in local jails for state facilities

Week ending	Probationers waiting in jail				Probationers waiting in jail					Assigned females
	.. for PDCs	.. for RSAT	.. for boot camps	Total	Total backlog	Not yet assigned	In adm process	Delayed transport	Ready for pickup	
27-Jun-2025	11	2	1	14	1425	9	1416	179	1237	35
04-Jul-2025	11	2	1	14	1394	9	1385	202	1183	53
11-Jul-2025	11	2	1	14	1191	9	1182	201	981	50
18-Jul-2025	11	2	1	14	1246	9	1237	198	1039	58
25-Jul-2025	11	2	1	14	1318	9	1309	203	1106	70
01-Aug-2025	11	2	1	14	1266	9	1257	192	1065	59
08-Aug-2025	11	2	1	14	1112	11	1101	177	924	40
15-Aug-2025	11	2	1	14	1113	10	1103	174	929	51
22-Aug-2025	12	2	1	15	1204	10	1194	171	1023	60
29-Aug-2025	12	2	1	15	1208	8	1200	175	1025	65
05-Sep-2025	12	2	1	15	1164	8	1156	177	979	63
12-Sep-2025	12	2	1	15	1168	8	1160	178	982	68
19-Sep-2025	12	2	1	15	1350	8	1342	176	1166	61
26-Sep-2025	12	2	1	15	1456	9	1447	169	1278	79
03-Oct-2025	12	2	1	15	1545	8	1537	169	1368	75
10-Oct-2025	12	2	1	15	1568	8	1560	171	1389	66
17-Oct-2025	12	2	1	15	1619	9	1610	171	1439	73
24-Oct-2025	12	2	1	15	1738	8	1730	172	1558	60
31-Oct-2025	12	2	1	15	1861	10	1851	167	1684	53
07-Nov-2025	12	2	1	15	1898	11	1887	168	1719	58
14-Nov-2025	12	2	1	15	1907	12	1895	169	1726	67
21-Nov-2025	12	2	1	15	1956	11	1945	175	1770	86
28-Nov-2025	12	2	1	15	2047	11	2036	168	1868	79
05-Dec-2025	11	2	1	14	1989	10	1979	171	1808	72
12-Dec-2025	10	2	1	13	2063	11	2052	172	1880	79
19-Dec-2025	10	2	1	13	2078	11	2067	172	1895	53
26-Dec-2025	10	2	1	13	2177	11	2166	175	1991	61
02-Jan-2026	10	2	1	13	2171	11	2160	172	1988	45
09-Jan-2026	10	2	1	13	1965	10	1955	175	1780	34
16-Jan-2026	10	2	1	13	2042	9	2033	175	1858	59
23-Jan-2026	10	2	1	13	2157	9	2148	170	1978	69
30-Jan-2026	10	2	1	13	2182	9	2173	168	2005	52
06-Feb-2026	10	2	1	13	2212	9	2203	164	2039	61
13-Feb-2026	10	2	1	13	2277	9	2268	164	2104	71
20-Feb-2026	10	2	1	13	2304	9	2295	167	2128	64
27-Feb-2026	10	2	1	13	2316	9	2307	168	2139	47
06-Mar-2026	10	2	1	13	2364	9	2355	172	2183	66
13-Mar-2026	10	2	1	13	2360	10	2350	174	2176	76
20-Mar-2026	10	2	1	13	2430	10	2420	173	2247	49
27-Mar-2026	10	2	1	13	2372	10	2362	172	2190	62
03-Apr-2026	10	2	1	13	2389	10	2379	177	2202	69
10-Apr-2026	9	2	1	12	2396	11	2385	183	2202	57
17-Apr-2026	9	2	1	12	2357	11	2346	180	2166	53
24-Apr-2026	9	2	1	12	2440	13	2427	178	2249	55
01-May-2026	9	2	1	12	2481	12	2469	178	2291	67
08-May-2026	8	2	1	11	2483	11	2472	171	2301	56
15-May-2026	8	2	1	11	2530	11	2519	173	2346	67
22-May-2026	8	2	1	11	2582	11	2571	175	2396	70
29-May-2026	8	2	1	11	2591	11	2580	166	2414	65
05-Jun-2026	7	2	1	10	2621	11	2610	163	2447	59
12-Jun-2026	7	2	1	10	2656	10	2646	163	2483	65
19-Jun-2026	7	2	1	10	2558	10	2548	173	2375	67